

Azoria 2005
Final Report-B2900
DFM
21 July 2005

Excavation Dates: May 31-June 15 2005

Datum Points: R11, 355.86; R12 (353.82), and R14 (354.37)

Location: B2900 is located directly east of B1600 and is oddly shaped due to the topography of the area. The trench is defined by B1700 to the north and the western baulk of B1600 serves as its western boundary. The natural line of the bedrock defined the trench to the east and the southern boundary set along the same line as B1600's southern edge. The parameters measure approximately 7.25m N-S and 3.50m E-W.

Purpose of Excavation: To expose the interior space defined by B1603 and B1605 and to investigate the area for clarification on the relationship between the two terraces and the various phases of architecture.

Depositional History:

South of B2908: Excavation of B2900 concluded with locus B2913, a deposit of habitation debris lying upon a floor surface. The floor surface was well preserved in the northern and western parts of the room, along walls B1603 and B1605. The floor disappeared at the southern end of the room and along the line of bedrock that served as the eastern wall of the room. A spindle whorl was the only object from this locus. Above the floor was locus B2912, a layer of habitation debris and roofing clay, mixed with bedrock erosion material. Loci B2911 and B2910 are strata of slope wash, silt deposit, and eroded bedrock that lay upon the worked bedrock surface. Two ledges, dotted with a number of flat surfaces used as shelves, had been carved out of the bedrock wall. The idea that these shelves were used as storage spaces is suggested by a shattered hydria, associated with pail B2910.3, that appeared to have fallen off from one of the shelves. Loci B2906 and B2905 are layers of slope wash and topsoil, respectively, that were W of the modern N-S terrace wall that cut across B2900. Locus B2906 revealed the westernmost and lowest courses of B2908, which is the E-W cross wall that serves as the northern boundary of the room enclosed by B1603 and the eastern wall of bedrock. In the eastern half of the trench, behind the modern terrace wall, a substantial stratum of modern terrace fill covered the bedrock, which is represented by locus B2903. Finally, excavation began with the removal of topsoil, locus B2901.

North of B2908: Excavation ended with locus B2909, a deposit of wall tumble and slope wash that filled the space between E-W wall B2908 and B1716, the N-S wall, that probably had at one point terminated against B2908. Obstructing excavation in this corner space is a large olive tree, whose roots have caused much disturbance in the area. Above locus B2909 was locus B2907, which is the stratum of wall tumble and slope wash that revealed the continuation and the two edges of B2908. Locus B2902 was the layer of slope wash and vegetation debris in the northern part of the trench, which lay under the stratum of topsoil, locus B2901.

Conclusions: The room enclosed by B2908, B1603, and the worked bedrock is most likely an interior space used possibly for storage and/or workspace. The carved bedrock ledges with flat spaces were used as pottery stands and/or work surfaces. A stone quern

and two spindle whorls would suggest some sort of work environment; yet the room itself is long and narrow, measuring approximately 4.50m long and under 1.50m wide, so such dimensions would make this a rather small workspace. The architectural use and incorporation of the bedrock as a functional space is a common occurrence at Azoria and this room provides an excellent example of the people incorporated the natural landscape into the architecture and used it to their advantage. The majority of the pottery from the lower loci within the room dates to 7th c. – 1st half of 6th c BC. Access to the room is unclear, as well as its relationship with the exterior space W of B1603 and the Archaic room just north of B2900. The wall B2908 serves as the divider between the Archaic room in B1700 and the room unveiled by B2900. The wall B2908 appears to have been built up against the bedrock, using it as backing for the eastern end of the wall. At one point, the wall B1716 originally met up with B2908, forming the corner of an Archaic room. Another perplexing issue regarding this space is whether or not it was roofed; and if it was covered, how was the roof built? There was a fair amount of ceiling clay and a silty layer of disintegrated ceiling clay excavated in the area, though it is hard to envision how they supported the roof, especially along its eastern edge against the bedrock. The bedrock is extremely uneven and at a sharp angle and it would be difficult to set up anything against it.

Loci List:

- B2901: Topsoil/Modern Surface Material
- B2902: Slopewash/Vegetation Debris
- B2903: Modern Terrace Wall Fill
- B2904: Eroded bedrock/Pre-bedrock material
- B2905: Topsoil W of modern terrace wall
- B2906: Slopewash/Bedrock Erosion
- B2907: Wall Tumble/Slopewash
- B2909: Wall Tumble/Slopewash N of B2908
- B2910: Slopewash/Bedrock Erosion/
- B2911: Slopewash/Silt Deposit/Bedrock Erosion
- B2912: Ceiling Clay/Habitation Debris
- B2913: Habitation Debris over floor surface

Architectural Features:

- B2908: E-W wall in north

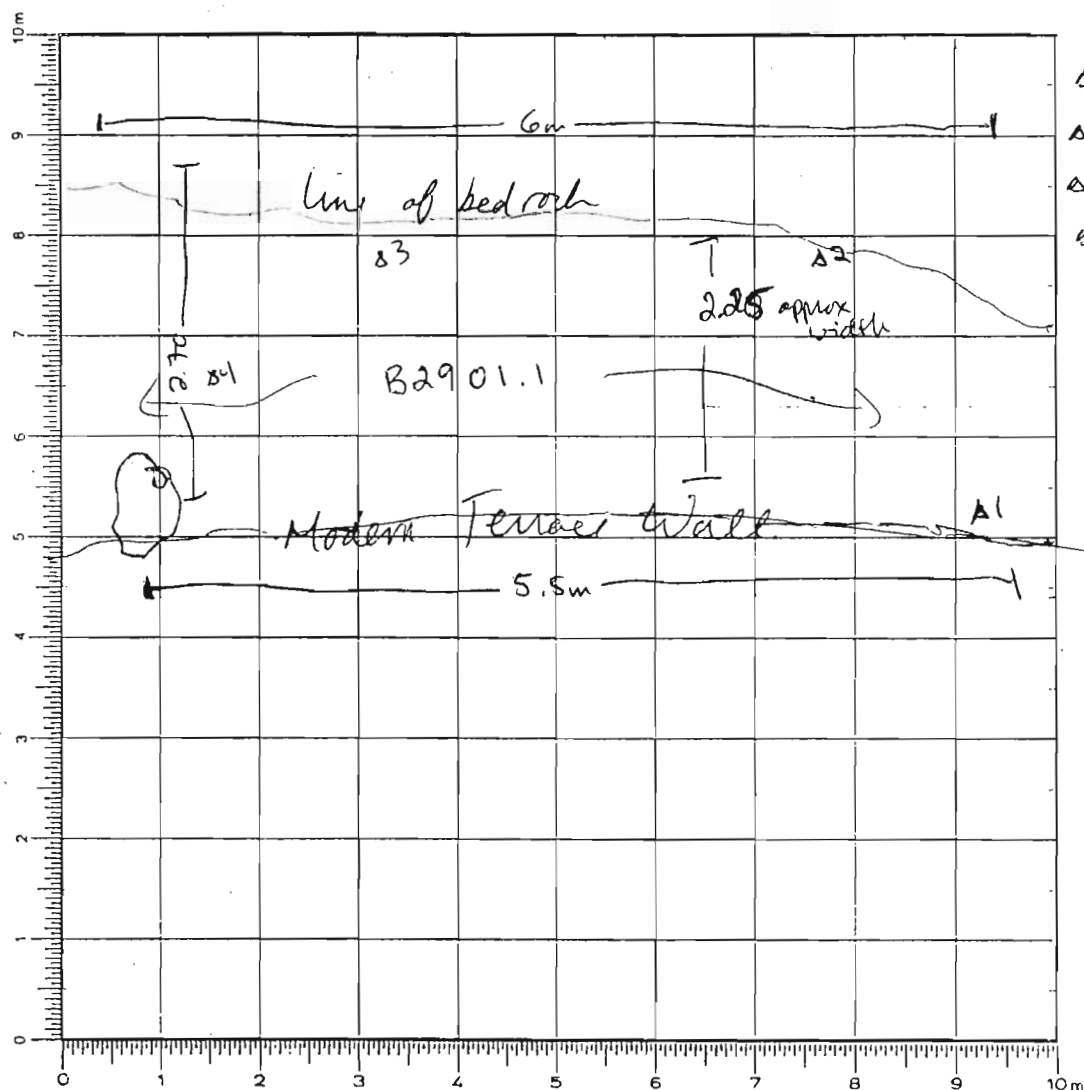
Elevations

Reading on

Benchmark: 1.505

H.I.: 355.325

Top

$$\Delta I = 1.479 = 353.85$$
$$\Delta 2 = 25(1.14) = 354.184$$
$$\Delta 3 = 0.529 = 354.796$$
$$B_4 = 0,775 = 354.55$$


SKETCH 1:75 N

Today's date: 31 May 05 Locus above: —

Verbal description:

Topsoil and modern fill behind knave wall; the matrix is composed of a wide range of rocks, from lagers to cobblestones ~~size~~ and dark loess soil

Locus Interpretative Comments (What do you think this is? DATE your comments, continue on additional pages if necessary):

31 May 05

See next sheet

Year

Trench/Locus

Excavator

June 1
June 2

OBJECTS

1

ADDITIONAL COLLECTED MATERIAL

[illegible]

Year 2005 Trench/Locus B2901 Excavator DFM

DESCRIPTION of PROGRESS of EXCAVATION [date each entry and identify associated pottery find(s)]:

31 May 05

This morning ~~I was decided to give the~~ our trench was given the designation B2900. ^{The locus} B2901 is the level of modern soil ⁱⁿ topsoil and the modern fill backing the modern terrace wall that lines the ^{western} ~~eastern~~ edge of B2900. The modern terrace wall needs to be removed before further excavation can take place. The modern fill (ie locus B2901) is dense with rocks that range in size. The first pass through the area behind the terrace wall was given find number B2901.1. The width of this locus extends from the modern terrace ~~area~~ to the eastern line of bedrock, approximately 2.10m.

Year 2005 Trench/Locus B2900 Excavator DFM

DESCRIPTION of PROGRESS of EXCAVATION [date each entry and identify associated pottery find(s)]:

01 June 05

~~The~~^{the} morning was spent cleaning up the area around the line of bedrock that was exposed during the removal of topsoil and modern fill behind the terrace wall that is being slowly removed so that excavation ~~can~~ take place in the western half of B2900. The bedrock was articulated and swept and during this process a few sherds were discovered and these were assigned to pit B2901.2 since it was part of the same locus ~~and it was~~. Before any further excavation took place we measured the dimensions of the trench and took elevations (please see next page - #1) Since digging in this area began without elevations being taken, the elevations that were taken lined the edges of the trench. This should not cause concern since the area was fairly consistent in its topography and the elevations taken are compatible. After some discussion, it was decided to actually postpone digging ^{any deeper} ~~deeper~~ in the area behind the terrace wall and extend the dimensions of ~~the~~ trench B2900 ~~on~~ northward all the way to the S built line of B1700 (excavated last year).

The reason for proceeding with this course of action is that this new area of B2900 (please see next page - #2 Drawing @) is a very critical area in trying to figure out the transitional phases of the area and ~~the structures in~~ what the relationship is between the structures in B1700 and B1600. Elevations ^{Shel's old trench}

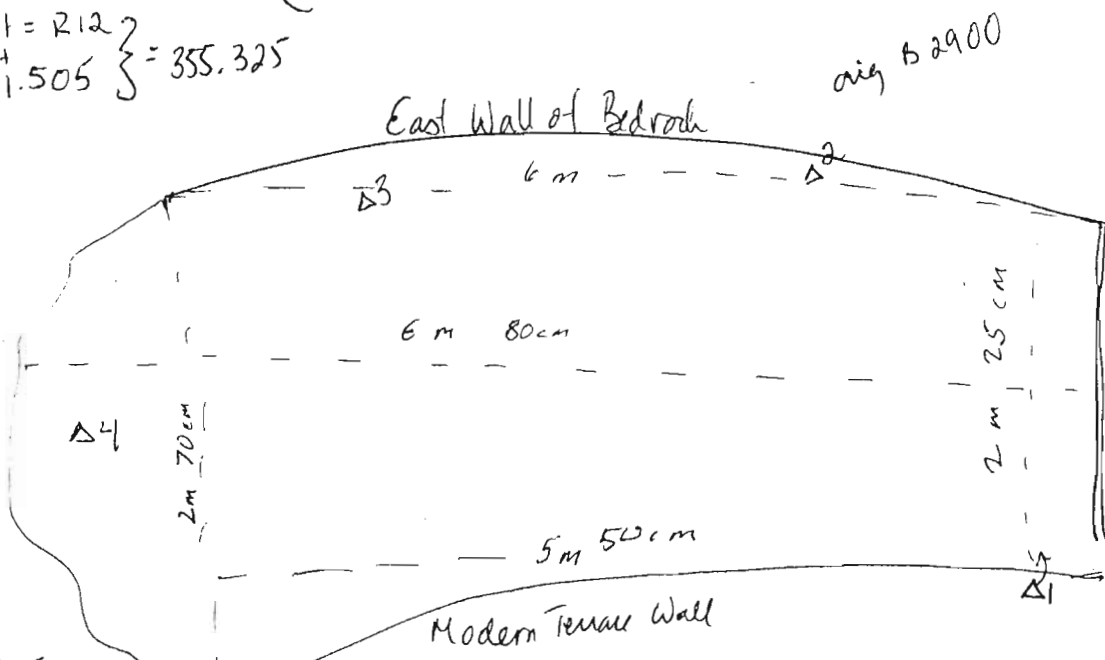
Year 2005 Trench/Locus B2900 Excavator DFM

DESCRIPTION of PROGRESS of EXCAVATION [date each entry and identify associated pottery pail(s)]:

~~01 June 2005~~
01 June 2005

Moument = R12
H.I. = 1.505 } = 355.325

#1 Drawing



Δ1 = 353.85

Δ2 = 354.184

Δ3 = ~~353.85~~ 354.796

Δ4 = 354.55 Δ1 = ~~354.55~~ 354.1479

Δ2 = 1.141

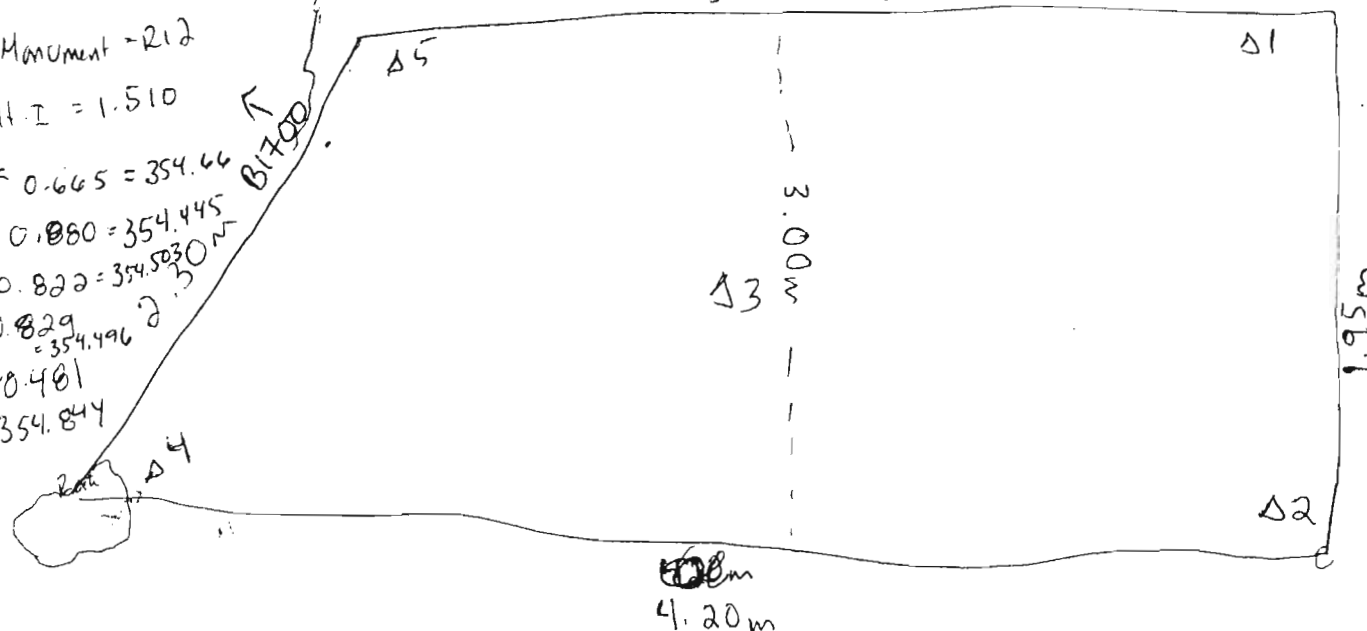
Δ3 = 0.529

Δ4 = 0.775

#2 Drawing

B2900 extension

3.70m line of bed rock



Tree

Moument = R12

H.I. = 1.510

Δ1 = 0.665 = 354.66

Δ2 = 0.880 = 354.445

Δ3 = 0.822 = 354.5830

Δ4 = 0.829 = 354.496

Δ5 = 0.481 = 354.844

354.844

Year 2005 Trench/Locus B2901 Excavator DFM

DESCRIPTION of PROGRESS of EXCAVATION [date each entry and identify associated pottery pail(s)]:

01 June 05 - cont. from previous page

... were taken of the new area and a pan was started to take this new extension down to the level of the original trench, behind the modern terrace wall. This pottery pail associated w/ this pan is B2901.3. The locus was kept the same because the new area is simply an extension of B2900 and the same topsoil and modern terrace fill that was put down behind the terrace wall. There was a noticeable increase in the amount of pottery in the new extension area of B2900 and there was ~~more~~ ^{a smaller number} of rocks in ~~the~~ in the matrix of the soil. B2901.3 was pan was not finished and so the pan will continue tomorrow...

Year 2005 Trench/Locus B2901 Excavator DFM

DESCRIPTION of PROGRESS of EXCAVATION [date each entry and identify associated pottery find(s)]:

02 June 2005

This morning the pass across the extension area of B2900 continued and the associated pottery find is B2901.4. During the pass a loom weight was found approximately 2.10m from the N bank and .50m from the W bank. The pass was finished, across the extension and to the S bank of B1700. ~~A few stones~~ The top of a few stones were uncovered which could be part of the wall B1716 in B1700. Another pass was started in the ~~exc~~ extension area and around the long rock to take down more of the fill behind the terrace wall and the wall itself. This pass is part of ~~B2901~~ B2901.4 since it was areas not taken down in the original pass. As the pass extended further into the area that could possibly be over the continuation of wall B1716 it was decided to change locus and so the new locus is B2902 and the associated pottery find is B2902.1

Object #1 - loom weight

$$\begin{array}{r} \text{Moment } R12 = 353.82 \\ \text{H.I} = 1.585 \end{array} \left. \vphantom{\begin{array}{r} \text{Moment } R12 = 353.82 \\ \text{H.I} = 1.585 \end{array}} \right\} 355.405$$

355.405 -

-.978

354.427 = Elevation for Obj #1

Year 2005 Trench/Locus B2901 Excavator DFM

DESCRIPTION of PROGRESS of EXCAVATION [date each entry and identify associated pottery find(s)]:

02 June 2005

Peggy had sorted the pottery associated w/
pail B2901.3 and found within the lat was
a loom weight. Thus it was pulled and catalogued
and recorded as coming from the pottery bag.
It was given Obj. #1 for pail B2901.3. The
original date of this pottery pail is ~~B2~~ 01 June 2005

Year 2005 Trench/Locus B2901 Excavator DFM

DESCRIPTION of PROGRESS of EXCAVATION [date each entry and identify associated pottery find(s)]:

06 June 2005

~~06~~ June 2005

This morning while Tamas was breaking up the large rock S of the olive tree, we made a wheelbarrow pass through the at the S end of B2900 and ~~cut~~ removed the topsoil in this area. The pottery find associated w/ this ~~is~~ is B2901.5. There were very few fragments of pottery - mostly large rocks and modern terrace fill. We also removed ~~the~~ a ^{larger} section of the terrace wall as we removed the fill behind it.

Year 2005 Trench/Locus B2902 Excavator DFM

Elevations

Benchmark used: R12

Reading on

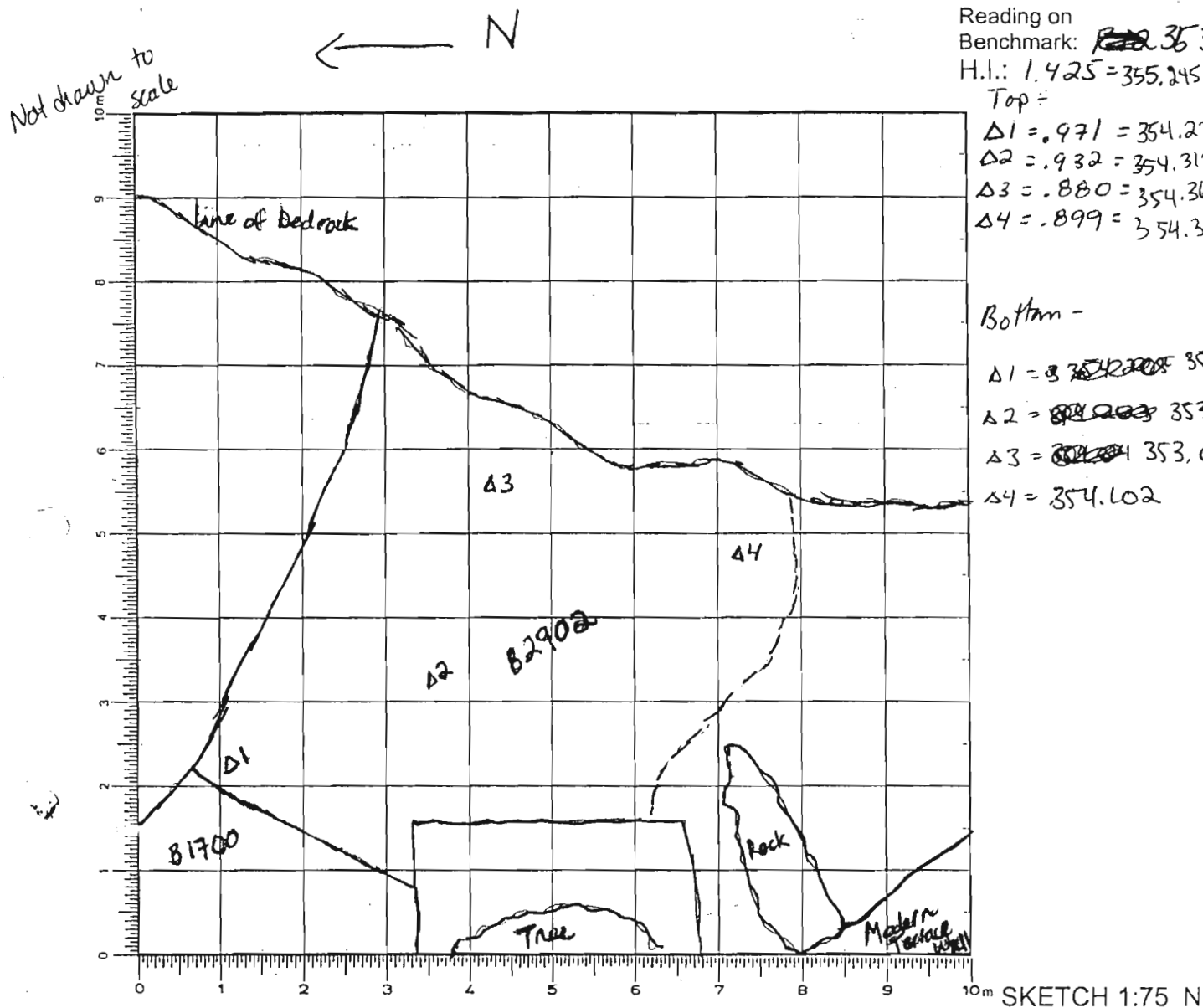
Benchmark: ~~62~~ 353.82

$$H.I.: 1.425 = 355.245$$

Top ÷

$$\Delta I = .971 = 354.274$$
$$\Delta 2 = .932 = 754.313$$
$$\Delta 3 = .880 = 254.365$$
$$\Delta 4 = .899 = 354.346$$

Bottom -

$$\Delta 1 = 3 \cancel{354205} 352.92$$
$$A_2 = \cancel{894.203} 353.127$$
$$\Delta 3 = \cancel{304} \cancel{354} 353, \alpha 7$$
$$\Delta 4 = 354.102$$


SKETCH 1:75 N

DEFINITION/DESCRIPTION of LOCUS (explain why you changed locus numbers):

Today's date: 02 June 05 Locus above: B2901

Locus parameters: N = old fence 81700 S baulk line; S = ~~just S of~~ ^{approx 5} large boulder next to olive tree
E = line of bedrock; W = West edge of 81716 and olive tree baulk, and modern fence wall behind lg. boulder

E = line of bedrock; W = West edge of B1716 and olive tree branch, and modern fence wall behind lg. boulders

Verbal description:

Soil matrix is dark to light brown, fairly loose soil; disturbed by much erosion + root movement; cobble size nodules

Locus Interpretative Comments (What do you think this is? DATE your comments, continue on additional pages if necessary):

Locus/Pottery Pail Number	Weight of Sherds	Number of Sherds	Chronology & Comments
B2902.1	.35 kg	82	'Modern', A, O?, LM III C
B2902.2	1.25 kg .240	165	'Modern', A, LM III C
B2902.3	.74 kg	86	A, LM III C
B2902.4	1.25 kg .11 kg	26	'Modern', A, LM III C
B2902.5	.01 kg	3	A, EIA
B2902.6	.02 kg	12	A, EIA?
B2902.7	Ø	Ø	Ø
B2902.8	.09 kg	27 + crumbs	A, LM III C
B2902.9	.031 kg	9	A, LG, EO
B2902.10	.02 kg	10	PG, LM III C
B2902.11	.045 kg	18	EIA, LM III C
B2902.12	Ø	Ø	Ø

B2902.13 .86 kg 68 Archaic
 B2902.14 .19 kg 39 OBJECTS
Archaic, LM III C

Object Number	Associated Pottery Pail	Identification (material/form)	Location	Elevation	Catalogue Number

ADDITIONAL COLLECTED MATERIAL

Locus/Pottery Pail Number	Bones	Shell	Carbon	Pumice	Soil Sample	Other (specify)
B2902.1	X	X				
B2902.2	X	X			X	
B2902.3	X	X				
B2902.4	X	X				
B2902.5	X	X				
B2902.6	X (empty)					
B2902.7	X (empty)					
B2902.8	X					
B2902.9	X					
B2902.10	X	X				
B2902.11	X					
B2902.12	Ø					
B2902.13	X					
B2902.14	X	X				

Year 2005 Trench/Locus B2902 Excavator OFM

DESCRIPTION of PROGRESS of EXCAVATION [date each entry and identify associated pottery find(s)]:

02 June 05

The first pass over the area w/ the pan. 66 ~~stones~~
continuation of wall B1716 is associated w/ pit B2902.1

This ^{locus} is in the N part of the trench and covers the area from B1700 S boundary to approximately 2.0m into southward into the trench. After the first pass ~~the~~ stones were further defined, though it was necessary to take another pass to help figure out ~~what~~ the stones were really part of B1716 and continuing. The pottery pit associated w/ this pass is B2902.2. Elevations were taken at the start of this locus and also after pass B2902.1 was completed.

) Elevations E start of B2902.2

Monument: RM (354.37)

H.I.: 2.025 - (356.395)

$\Delta 1 = 2.190 - 354.205$

$\Delta 2 = 2.132 - 354.263$

$\Delta 3 = 2.166 - 354.229$

Year 2003 Trench/Locus B2902 Excavator DFM

DESCRIPTION of PROGRESS of EXCAVATION [date each entry and identify associated pottery find(s)]:

03 June 2005

This morning we continued the pass through the N half of the trench in the area of the newly revealed continuation of B1716 that was not completed yesterday and the pottery find associated with this is B2902.3. Once that pass was completed the area was swept and a photo was taken to show the continuation of B1716. Then we took down the bank line that ~~had~~ existed between B1700 + B2900 in the NW corner of the trench, and the pottery find associated w/ this is B2902.4. The bank measured approximately 10m in width and 1.0m in length. Pottery find B2902.5 is associated w/ the area between B1716 E side and the line of bedrock that extends from B1700 into B2900 in the N end of the trench and contains through all of B2900. ^{the area is roughly triangular - see sketch on next page.} To help find the edges of the wall B1716 in B2900 ~~the~~ the wall was cleaned and the pottery find associated w/ this is B2902.6. Once the first pass was completed along the E side of B1716 and the bedrock in the triangular area, ~~(B2902.5)~~ B2902.5) another pass was taken in the area to investigate the rocks that appear to have slipped off the wall. The pottery find associated w/ this pass is B2902.7. The soil in this area is mostly disintegrated bedrock and red in color. Towards the end of the day, Rod came over to examine the wall B1716 and he ~~helped~~ pointed out the E line/edge of the wall and so ~~the~~ it was decided to remove the stones that had slipped off the wall to reveal the wall line. The find associated w/ this pass is B2902.8. This process was not completed by the end of the day and so will be continued later...

Year 2005 Trench/Locus B2902 Excavator DPM

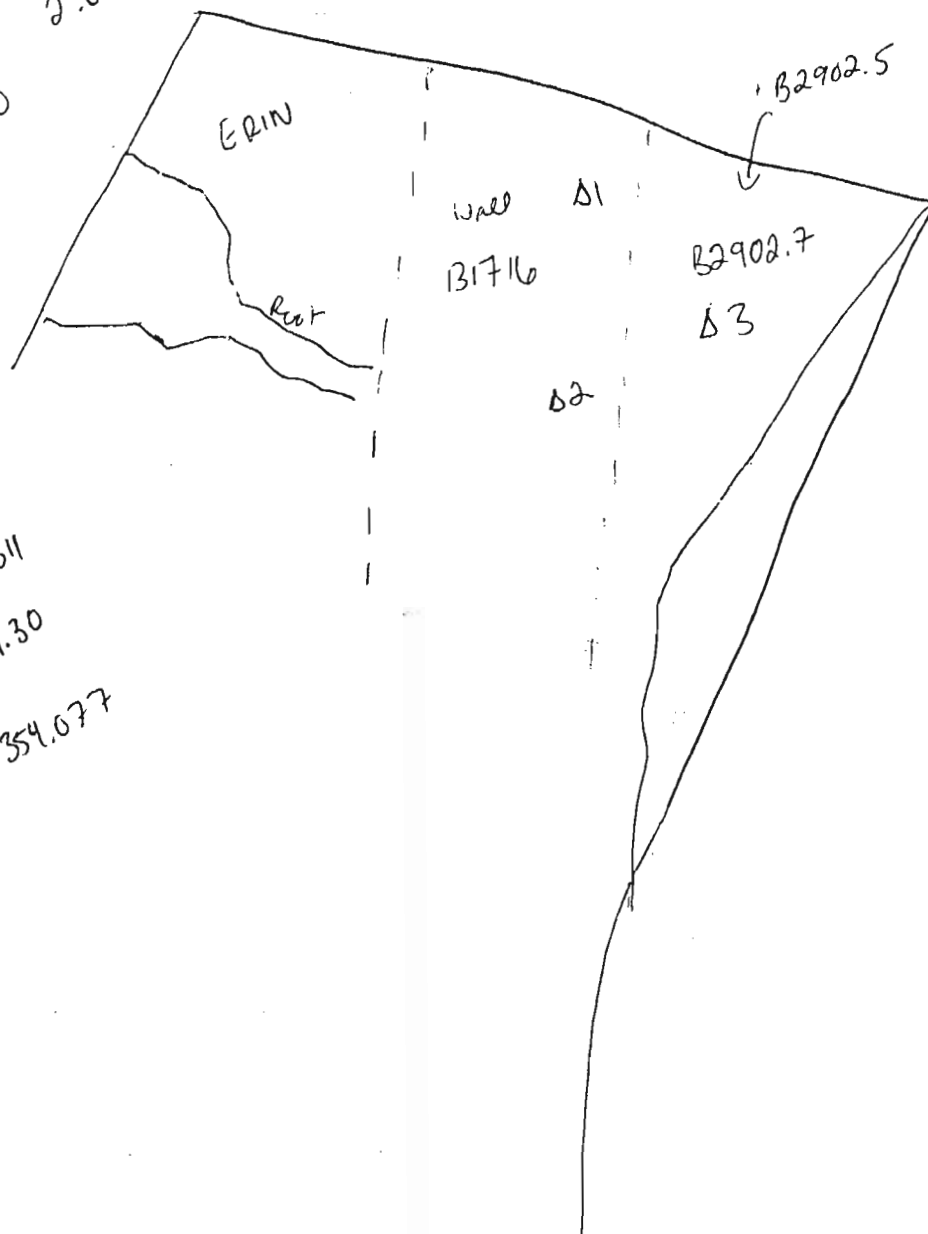
DESCRIPTION of PROGRESS of EXCAVATION [date each entry and identify associated pottery pail(s)]:

63 June 2005

$R14 = 2.110$
 $Reading = 1.950 (= 356.32)$
 $\Delta 1 = 2.009$
 $\Delta 2 = 2.020$
 $\Delta 3 = 2.243$

↑
N

B2902.8



$\Delta 1 = 354.311$
 $\Delta 2 = 354.30$
 $\Delta 3 = 354.077$

Year 2005 Trench/Locus B2902 Excavator DFM

DESCRIPTION of PROGRESS of EXCAVATION [date each entry and identify associated pottery find(s)]:

06 June 2005

Today we spent part of the day trying to find the east line of ^{wall} B1716 that is in B2900. The pottery find associated w/ this is B2902.9. We removed a few stones that appeared to have possibly been originally part of the wall. The root has destroyed the wall and pushed some stones eastward. By doing this we uncovered more of the wall at a lower course and so it is possible that there might be some of the wall still preserved ~~at~~ beyond the root. ~~This project~~ There were a few pieces of pottery and a couple of bone fragments. Not much was found on the screen. We will continue this process tomorrow (probably ...)

Year 2005 Trench/Locus B2902 Excavator DFM

DESCRIPTION of PROGRESS of EXCAVATION [date each entry and identify associated pottery pail(s)]:

⁶
07 June 2005

Elevations End of B2902.89

$$R12 = 353.82$$

$$H.I = 1.447 = 355.267$$

$$\Delta 1 = 2.338 = 352.929$$

$$\Delta 2 = 2.325 = 352.942$$

$$\Delta 3 = 2.140 = 353.127$$

$$\Delta 4 = 2.252 = 353.015$$

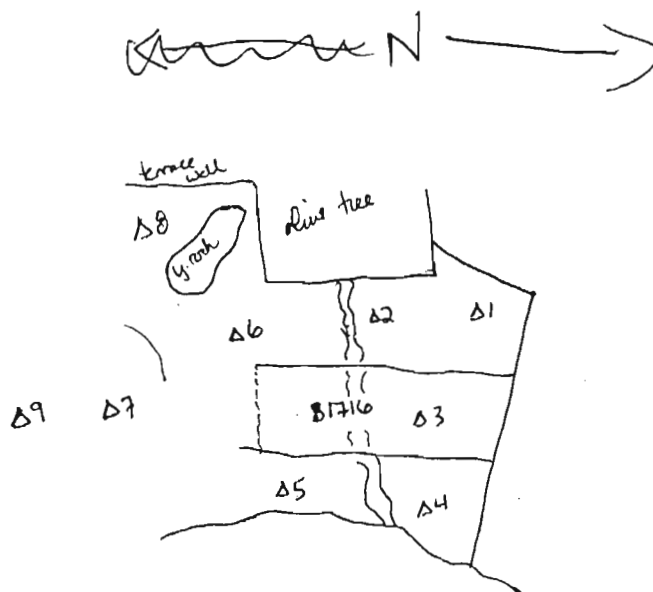
$$\Delta 5 = 2.250 = 353.017$$

$$\Delta 6 = 2.352 = 352.915$$

$$\Delta 7 = 1.165 = 354.102$$

$$\Delta 8 = 1.283 = 353.984$$

$$\Delta 9 = 1.233 = 354.034$$



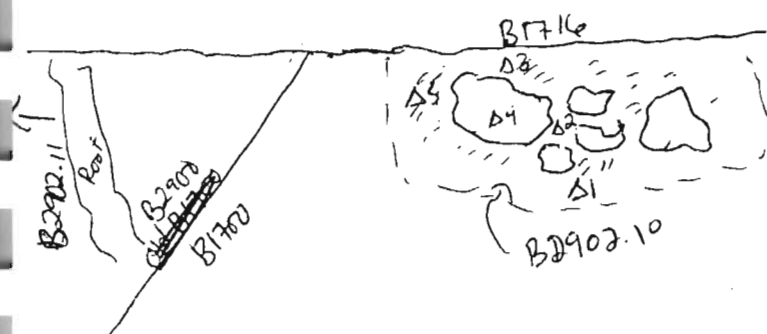
Year 2005 Trench/Locus B2902 Excavator DFM

DESCRIPTION of PROGRESS of EXCAVATION [date each entry and identify associated pottery pair(s)]:

07 June 2005

Today we continued the process of revealing the E face of B1716 in two separate areas. The first area was a cluster of rocks and dirt that had been left from the excavation of B1700.

The locus that had covered ~~this~~ this area around the wall was B1718 and the only associated pottery pair w/ this locus is B1718.1 and the mixture of datable pottery was FN, LMIII C, + LG. This cluster of rocks needed to be removed to further reveal the courses + face of B1716 and since the rocks were ^{around the wall +} touching ~~the wall~~, it was decided to put this pair w/ locus B2902 since that is the locus given to the layer of soil associated w/ B1716. The pottery pair associated w/ this is B2902.10 and the ~~area for this pair~~ cluster of rocks + dirt that make up this pair measures approx. 80 cm in length and 35 cm in width. This cluster of rocks begins 1.12m from the root on the E side of B1716 in B2900.



R14 = 354.37
Reading = 1.960
H.I = 356.33

$\Delta 1 = 2.268 = 354.062$
 $\Delta 2 = 2.174 = 354.156$
 $\Delta 3 = 2.143 = 354.187$
 $\Delta 4 = 1.999 = 354.331$
 $\Delta 5 = 2.274 = 354.056$

cont. on to next page

Year 2005 Trench/Locus B2902 Excavator DFM

DESCRIPTION of PROGRESS of EXCAVATION [date each entry and identify associated pottery find(s)]:

07 June 2005 (cont. from prev. page)

Another area needed to be cleaned along ~~B~~ the continuation of B1716 in B2900 and the pottery find associated w/ this area is B2902.11. This area is along the E side of B1716 to the S of the large road that cuts across B1716 - basically in the upper portion of the triangular area ~~that was~~ between the bedrock, the ^E line of B1716 & the original S bank of B1700. The area consists mostly of loose dirt, medium size rocks and ~~dis~~ disintegrated pieces of bedrock. The area is very narrow & difficult to dig. ~~There~~ The wall appears to continue Sward, with at least one rock to the S of the road still in place w/ a good cut face, but it gets hard to tell beyond that. It is possible that at some point they built the wall up to the point of where the bedrock extends Wward ~~but the~~ and the two meet and they filled the gap w/ packing. It is unclear if we have hit that point. The reason why there are 2 diff pottery finds associated w/ the ~~cleaning~~ revealing of the E face of B1716 is that one is located in B2900 (B2902.11) and the other is located in B1700 and outside of B2900's trench boundary, and I thought it necessary to keep the 2 areas separate, though still somewhat together since they are both dealing w/ the locus around the wall.

Year 2005 Trench/Locus B2902 Excavator DFM

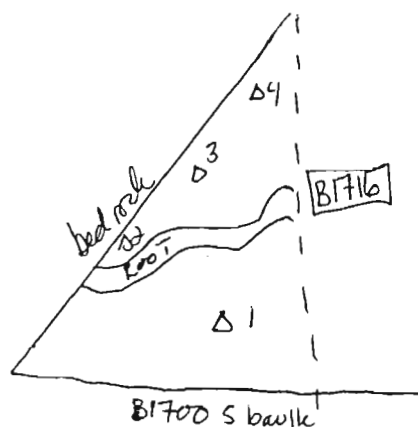
DESCRIPTION of PROGRESS of EXCAVATION [date each entry and identify associated pottery pail(s)]:

07 June 2005

Elevations in NE corner of trench ~~after~~^{at} B2902.11

R14 = 354.37
Reading = 1.960
H.I. = 356.33

$\Delta 1 = 2.290 = 354.04$
 $\Delta 2 = 2.291 = 354.039$
 $\Delta 3 = 2.259 = 354.071$
 $\Delta 4 = 1.960 = 354.37$



Year 2005 Trench/Locus B2902 Excavator DFM

DESCRIPTION of PROGRESS of EXCAVATION [date each entry and identify associated pottery find(s)]:

08 June 2005

This morning Rod cut the ~~soil~~ root that was going through B2716 on the E side and the dirt that was removed from under the root was given pottery find B2902.12.

The next pass in this locus was taken in the S area around the wall and much dirt was removed around the stones in trying to figure out if the stones were part of a wall or tumble or fill. The pottery find associated w/ this pass is B2902.13. Another pass was taken in the same area to further try to expose the roots + see what is going on and the pottery find associated w/ that is B2902.14.

Year 2005 Trench/Locus B2903 Excavator DFM

Elevations

Benchmark used:

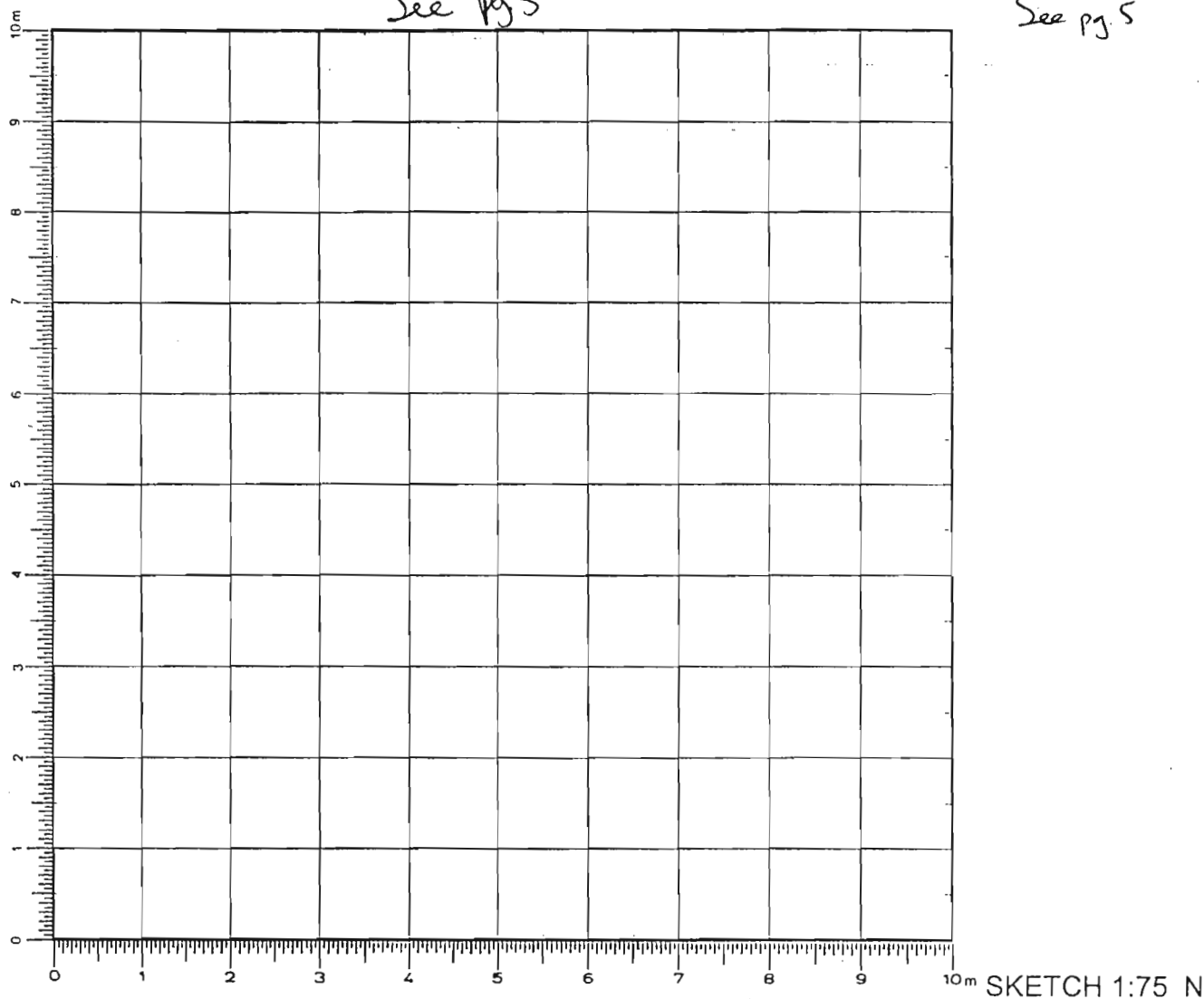
Reading on

Benchmark:

H.I.:

See pg 5

See pg 5



DEFINITION/DESCRIPTION of LOCUS (explain why you changed locus numbers):

Today's date: 03 June 2005 Locus above: B2901 (topsoil)Locus parameters: E boundary - bedrock line; N boundary - end of B17H6; S boundary - Skulle line
W - modern terrace wall

Verbal description:

~~Dissected~~ Soil is composed of much disintegrated bedrock, light brown soil and rocks ranging in size from medium to cobblestone. The level of compaction is fairly loose

Locus Interpretative Comments (What do you think this is? DATE your comments, continue on additional pages if necessary):

03 June 2005: This locus is mostly the consist mostly of the modern terrace fill that lies behind the modern terrace wall and between the natural line of bedrock that extends of forming a natural E boundary for trench B2900. →

Year 2005 Trench/Locus B2903 Excavator DFM

DESCRIPTION of PROGRESS of EXCAVATION [date each entry and identify associated pottery find(s)]:

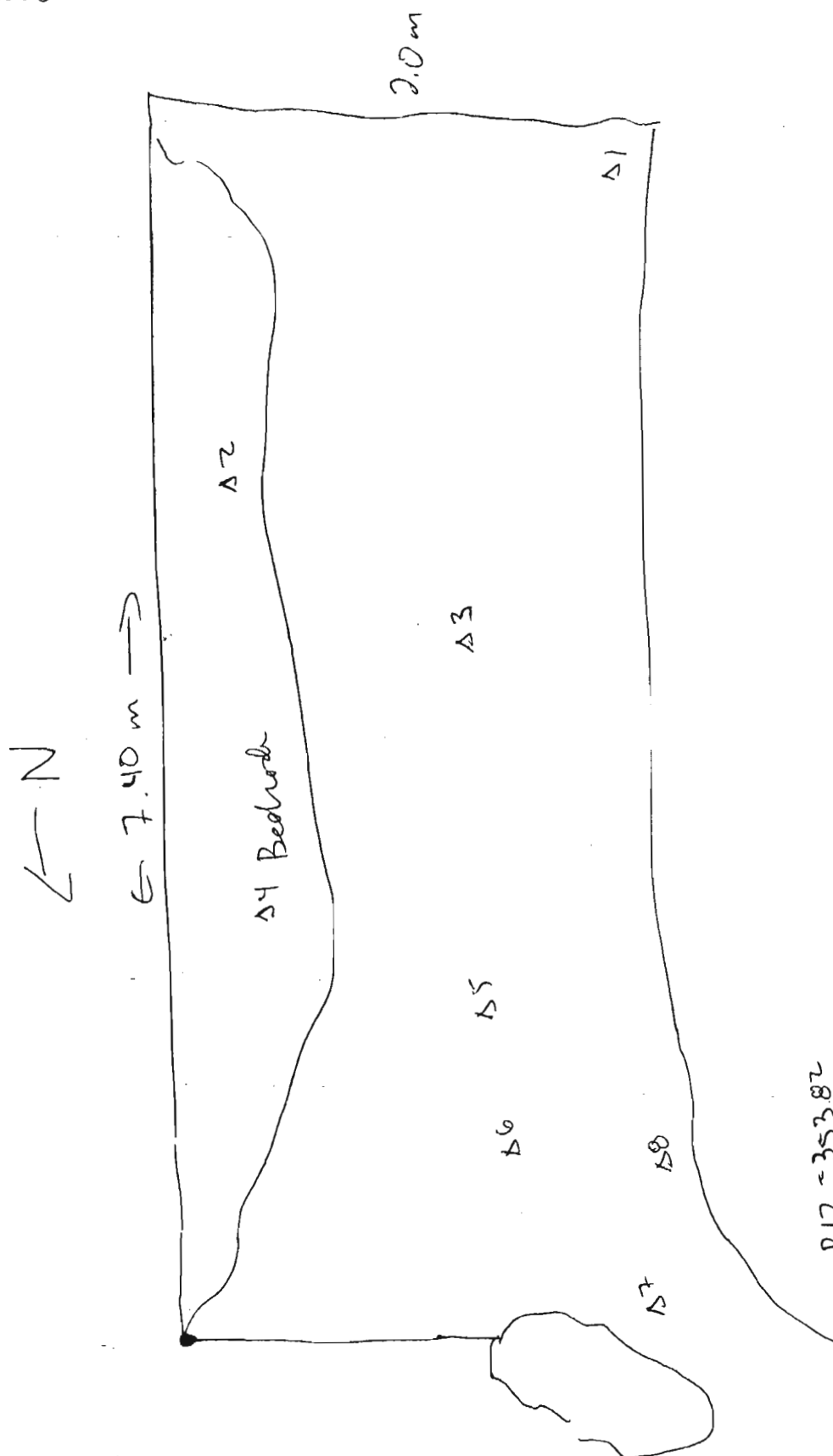
03 June 2005 (cont ~~from~~ from pg 1)

~~On 03 June 2005~~ Today we continued excavating the area behind the modern terrace wall and since we had removed the top soil in this area we changed loci and called the new locus B2903. The first pottery find associated with this pan is B2903.1 ^{newly revealed} the pan associated w/ this pan consisted mostly of the area between the end of B1716 and approximately — south of B1716 since it was in this area that a bit of a slope had developed to accommodate the wheelbarrow and so it was decided to take this section down so that it was even w/ the rest of the surface behind the modern terrace wall. Once that was completed, another pan was started at the S end of B2900 and the pottery find associated with this is B2903.2 the day ended before this pan was completed and so we will continue the pan later.

Year 2005 Trench/Locus B2900 Excavator DFH

DESCRIPTION of PROGRESS of EXCAVATION [date each entry and identify associated pottery pail(s)]:

03 June 2005



R12 = 35382

Reading = 1.304

H.I = 355124

A1 = 1.407 = 353.717

A2 = 1.335 = 353.889

A3 = 1.386 = 353.738

A4 = 1.429 = 354.195

A5 = 1.331 = 353.793

A6 = 1.223 = 353.901

A7 = 1.141 = 353.983

Year 2005 Trench/Locus B2903 Excavator DFM

DESCRIPTION of PROGRESS of EXCAVATION [date each entry and identify associated pottery find(s)]:

06 June 2005

~~Today we decided to take down part of the topsoil in the southern most extreme part of the trench original trench B2900 boundary to make~~

Today Tassos spent a large portion of the morning removing the extremely large boulder that was situated S of the olive tree along the modern terrace wall. Some dirt had to be dug around the ~~too~~ stone and in the process of cleaning up the rock chips + fragments a few pottery sherds were uncovered - they are associated w/ B2903.3.

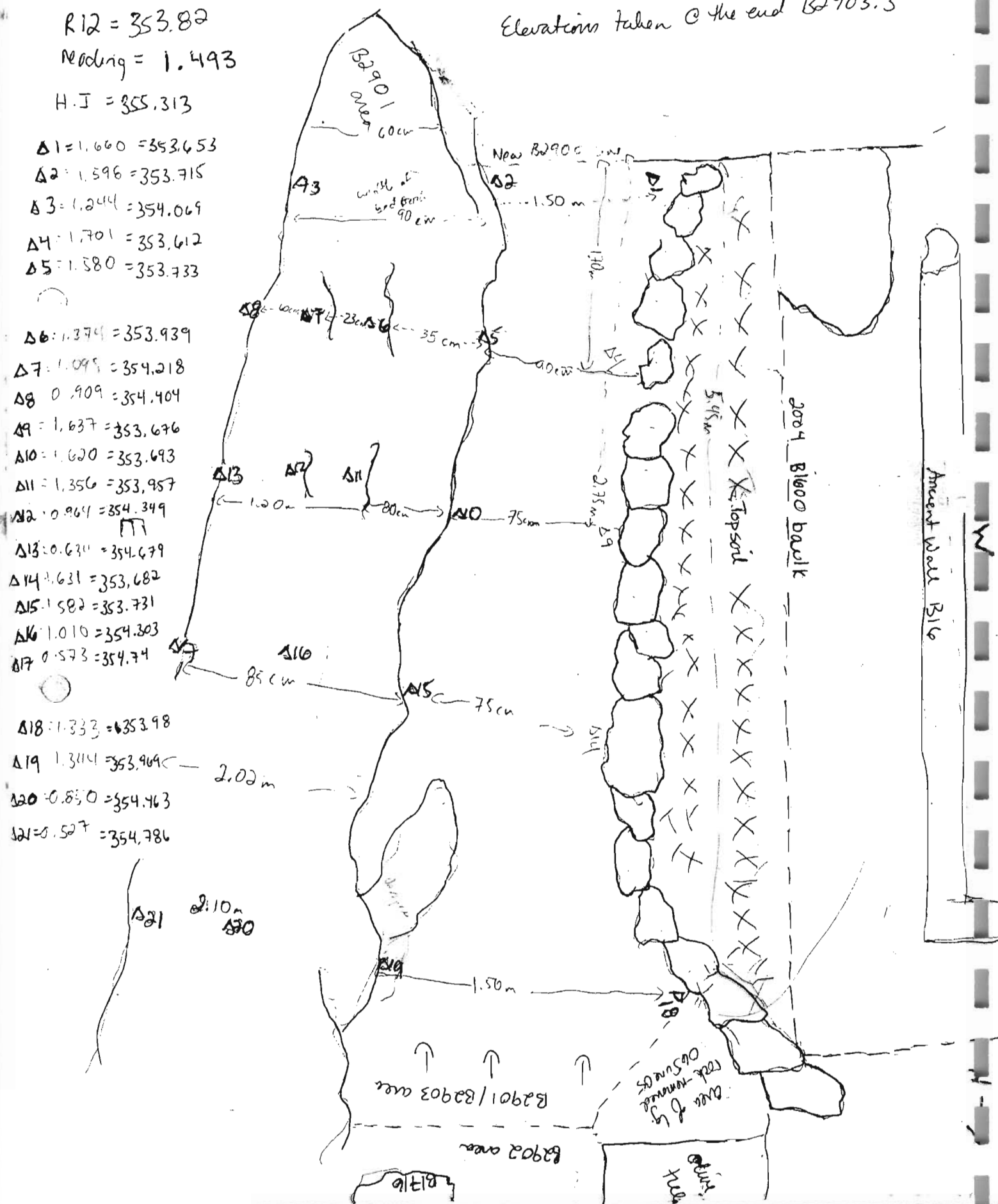
DESCRIPTION of PROGRESS of EXCAVATION [date each entry and identify associated pottery pile(s)]:

Elevations taken @ the end B2903.3

Reading = 1.493

$$\Delta 1 = 1.660 = 353.653$$
$$\Delta 2: 1.596 = 353.715$$
$$\Delta 3 = 1.244 = 354.069$$
$$\Delta y = 1,701 = 353,612$$
$$\Delta S = 1.580 = 353.733$$
$$\Delta b: 1.374 = 353.939$$
$$\Delta T: 1.09^\circ = 354.218$$
$$\Delta G \quad 0.909 = 354.404$$
$$\Delta 9 = 1,637 = 353,676$$
$$A10 = 1.620 = 353.693$$
$$\Delta H = 1,356 = 353,957$$
$$12 \cdot 0.969 = 354.349$$
$$\Delta 13: 0.630 = 354.679$$
$$\Delta 14^{\circ} 1,631 = 253.682$$
$$\Delta 5.1 \text{ SED} = 353.731$$
$$\Delta K \cdot 1.010 = 354.303$$
$$17 \quad 0.575 = 354.74$$
$$\Delta 18 = 1.333 = 1353.98$$

$\Delta 19 \quad 1.3114 = 353.969 \text{ — } 2.22$

$$120 \div 0.85 = 141.176$$
$$121 = 5.52^7 = 354,786$$


Year 2005 Trench/Locus B2903 Excavator DFM

DESCRIPTION of PROGRESS of EXCAVATION [date each entry and identify associated pottery find(s)]:

07 June 2005

This morning we continued the clean-up process from the demolition of the masonry building and the pottery found associated w/ this is B2903.4.

Year 2005 Trench/Locus B2903 Excavator DFM

DESCRIPTION of PROGRESS of EXCAVATION [date each entry and identify associated pottery find(s)]:

08 June 2005

After some discussion over in the area where the S end of B1716 ends in B2900, it was clear that in order to make sense of the stones in that area we needed to approach it from ~~the~~ a different angle and dig into it instead of from above. So at this point we removed ~~the face of~~ the final course of the terrace wall (or what we thought at the time was the final course), though leaving a ~~few~~ couple of stones in that could be part of an ancient spine wall that is visible ^{Nward} along the ~~the~~ terrace. It is possible that when they built the modern terrace wall they incorporated the ancient wall. But that is yet to be determined. The find associated w/ this removal of soil behind the terrace wall and the rocks of the wall is B2903.5 and B2903.6

Year 2005 Trench/Locus B2903 Excavator DFM

DESCRIPTION of PROGRESS of EXCAVATION [date each entry and identify associated pottery pair(s)]:

09 June 2005

This morning it was decided that before continuing the pan that was not finished yesterday (B2900.1) we would ~~get~~^{remove} the final course of stones from the modern terrace wall and the soil behind the wall and all the way up to the edge of the bedrock. The pottery pair associated w/ this pan is B2903.70. The bedrock extends far out into the trench and as we remove the terrace wall it appears that they used the bedrock in the S end as sort of a backdrop and built the terrace wall against the bedrock. This should be the final pan for this locus.

Final elevations were taken for B2903:

$$R12 = 353.82$$

$$\text{Reading} = 1.466$$

$$H.I = 355.286$$

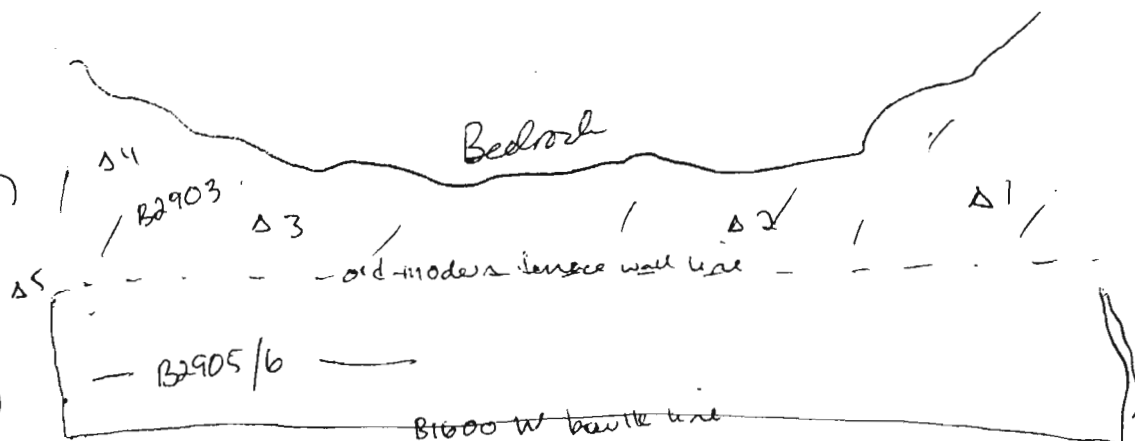
$$\Delta 1 = 2.122 (353.164)$$

$$\Delta 2 = 2.103 (353.183)$$

$$\Delta 3 = 2.117 (353.169)$$

$$\Delta 4 = 1.980 (353.306)$$

$$\Delta 5 = 2.146 (353.14)$$



Year

Trench/Locus

Excavator

[illegible]

OBJECTS

[illegible]

ADDITIONAL COLLECTED MATERIAL

[illegible]

Year 2005 Trench/Locus B2904 Excavator DFM

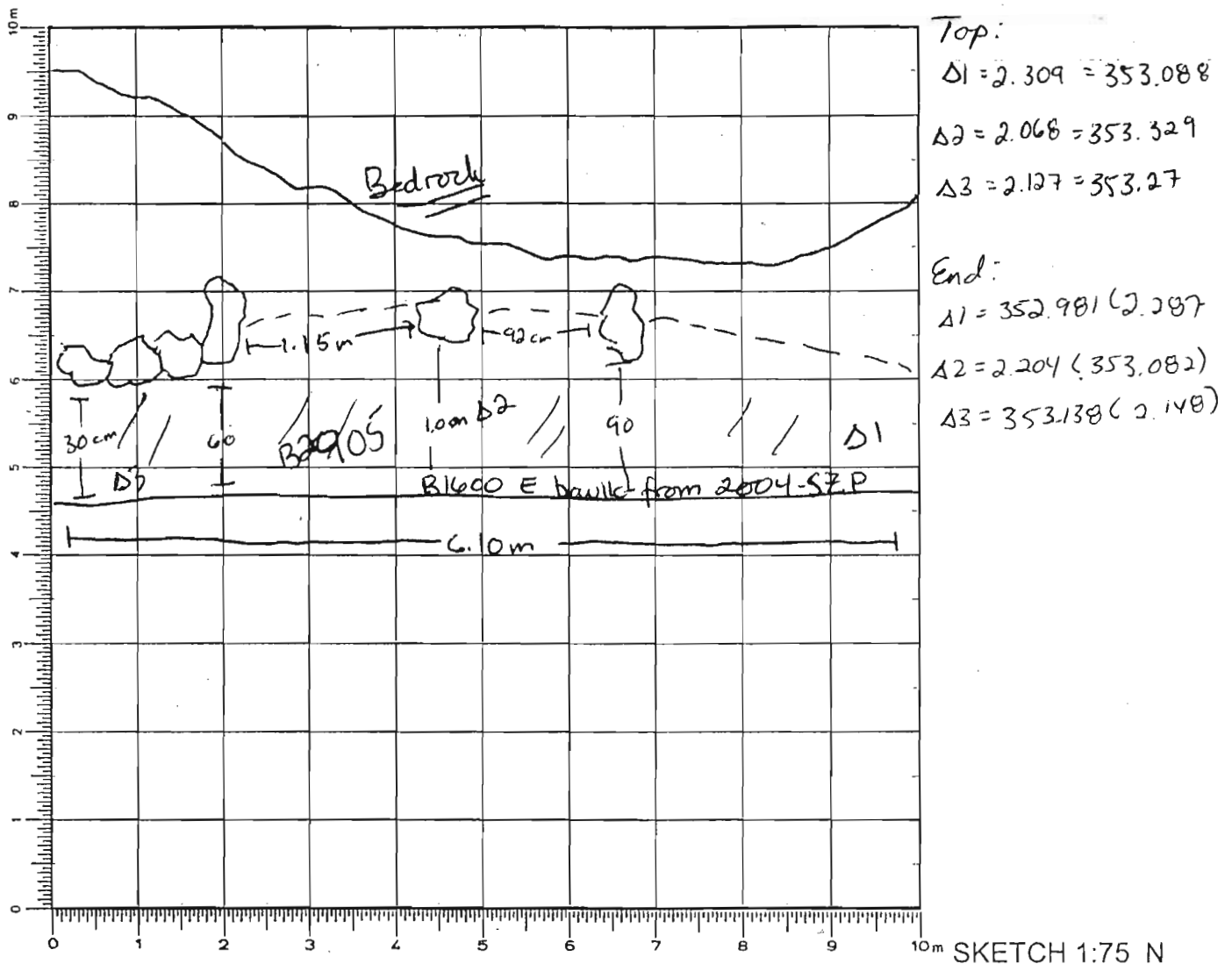
DESCRIPTION of PROGRESS of EXCAVATION [date each entry and identify associated pottery pail(s)]:

07 June 2005 (cont. from pg. 1)

the surface of the area Eward of B1716 so that it was equal
w/ the level of level of B2900 at its N end.

Year 2005 Trench/Locus B2905 Excavator DFM**Elevations**

Benchmark used: R12
 Reading on C353.82
 Benchmark: 1.577
 H.I.: 355.397



DEFINITION/DESCRIPTION of LOCUS (explain why you changed locus numbers):

Today's date: 08 June 2005 Locus above:Locus parameters: extends E/W at widest point 6.10m and N/S runs 6.10mVerbal description: Bedrock line is its E boundary; N boundary is bank where tree; W old B1600 brick line

The soil is fairly compact w/ dark brown soil and filled w/ cobblestones and a fair amount of pottery; some vegetation decay as well

Locus Interpretative Comments (What do you think this is? DATE your comments, continue on additional pages if necessary):

08 June 2005 - This locus is the topsoil in front of the modern terrace wall. There is a fair amount of pottery →

Cent.

[illegible][illegible][illegible]

Year 2005 Trench/Locus B2905 Excavator DFM

DESCRIPTION of PROGRESS of EXCAVATION [date each entry and identify associated pottery find(s)]:

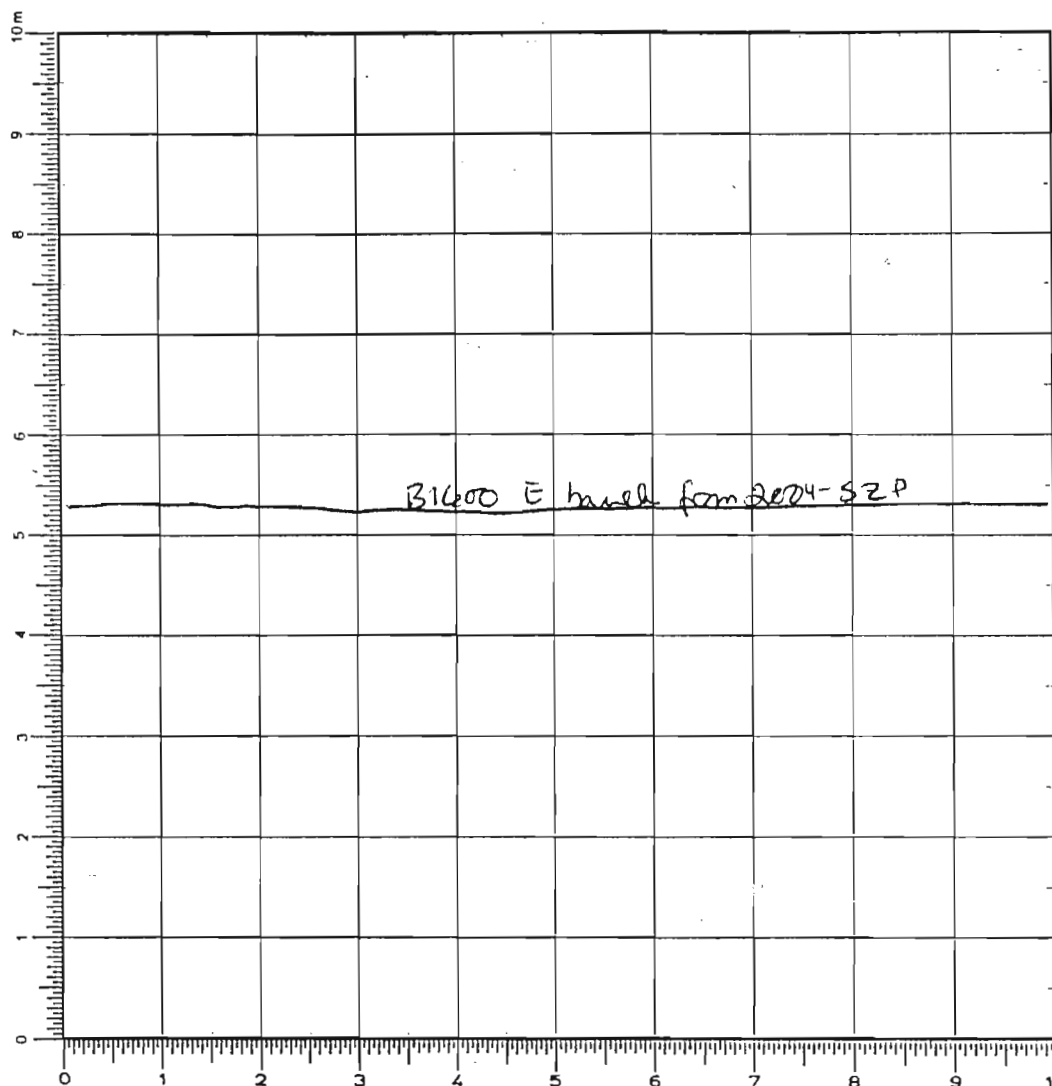
08 June 2005 (cont. from previous page)

... in the soil and during this pass another lower course of the modern terrace wall was revealed but mostly only in the Southern part. Some modern material was still found. ~~and so we~~. The pottery find associated w/ this pass is B2905.1

Year 2005 Trench/Locus B2906 Excavator DFM

Elevations

Benchmark used: R12
 Reading on C353.81
 Benchmark: 1.448
 H.I.: 353.286



Top:
 $\Delta 1 = 352.981 (2.287)$
 $\Delta 2 = 2.204 = 353.082$
 $\Delta 3 = 2.148 = 353.138$

End: $R12 = 1.523$
 $H.I. = 355.345$

$\Delta 1 = 2.441 = 352.901$
 $\Delta 2 = 2.346 = 352.999$
 $\Delta 3 = 2.426 = 352.919$
 $\Delta 4 = 2.354 = 352.911$
 $\Delta 5 = 2.437 = 352.908$
 $\Delta 6 = 2.261 = 353.084$

10m SKETCH 1:75 N

↑

DEFINITION/DESCRIPTION of LOCUS (explain why you changed locus numbers):

Today's date: 08 June 2005 Locus above: B2905

Locus parameters:

Extends E/W at widest point @ 1.0m and N/S runs 6.0m

Verbal description:

The soil is fairly compact w/ dark brown soil, filled w/ cobbles and a fair amount of pottery

Locus Interpretative Comments (What do you think this is? DATE your comments, continue on additional pages if necessary):

08 June 2005 - This locus is the layer of soil that was underneath the topsoil and though the matrix was fairly similar - we made this a new locus cause it was no longer topsoil. The pottery was associated w/

Year

Trench/Locus

Excavator

[illegible]

OBJECTS

[illegible]

ADDITIONAL COLLECTED MATERIAL

[illegible]

Year 2005 Trench/Locus B2906 Excavator DFM

DESCRIPTION of PROGRESS of EXCAVATION [date each entry and identify associated pottery find(s)]:

08 June 2005 (continues from prev page)

... this pass is B2906.1. During this pass it was made clear that the stones once thought to be part of the annual ³pinewall seen along the terrace are not part of the wall and are sitting upon soil. They were removed and ~~there~~ so the pass extended to reach the E line of bedrock.

Year 2005 Trench/Locus B2906 Excavator DFM

DESCRIPTION of PROGRESS of EXCAVATION [date each entry and identify associated pottery find(s)]:

09 June 2005

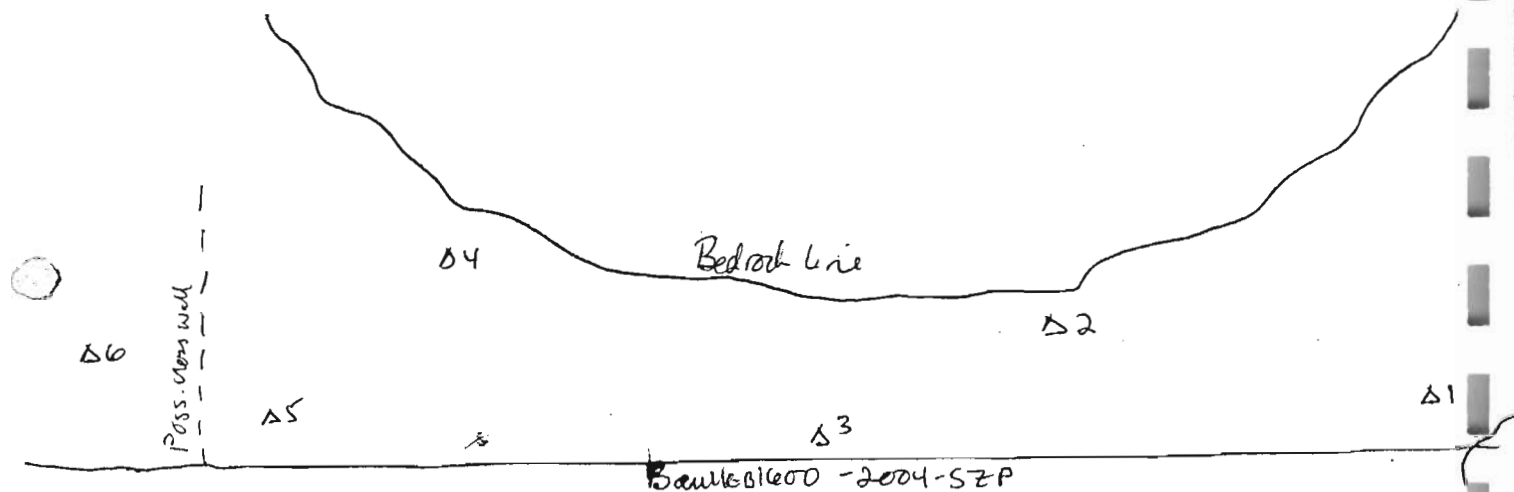
This afternoon we continued the pan that was started yesterday and the pottery find associated w/ this pan is B2906-2. The soil is fairly soft and brown in color and is quite full of pottery and bone. The bedrock appears to be extending Wward toward the recent road B1605 in B1600. The soil appears to be a mixture of soil deposition and wash. There are still some rocks in the soil, so we are still fairly high up. As Tamas moved Nward toward the olive tree and the cluster of rocks the soil had more rocks as if they had tumbled down from ~~over~~ the walls.

Year 2005 Trench/Locus B2906 Excavator DFM

DESCRIPTION of PROGRESS of EXCAVATION [date each entry and identify associated pottery pair(s)]:

10 June 2005

This morning Tasso continued the pass through B2906 and the pottery pair associated w/ this pass is B2906.3. ~~This section of~~ the pass began approximately 3.50 m from the S bank of B2900. In the N part of the trench, during this pass through B2906 a possible crosswall, continuing from B1600, was revealed. Further investigation will be necessary, but it looks promising. The pass was finished and final elevations were taken.



$$R12 = 353.82$$

$$\text{Reading} = 1.525$$

$$H.I. = 355.345$$

$$\Delta 1 = 2.441 = 352.901$$

$$\Delta 2 = 2.346 = 352.999$$

$$\Delta 3 = 2.426 = 352.919$$

$$\Delta 4 = 2.354 = 352.991$$

$$\Delta 5 = 2.437 = 352.908$$

$$\Delta 6 = 2.261 = 353.084$$

Year 2005 Trench/Locus B2907 Excavator DFM

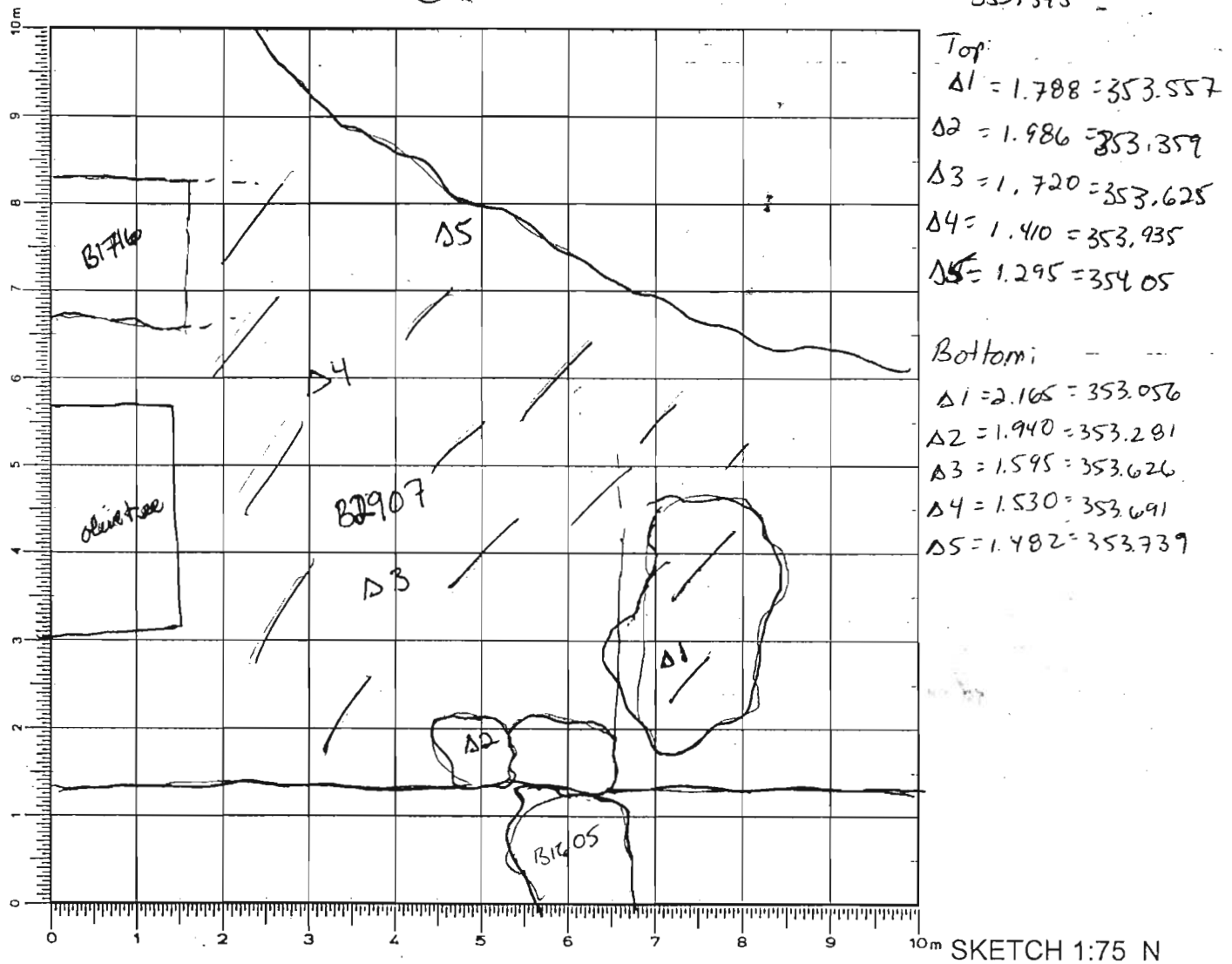
Elevations

Benchmark used: R12 (353.82)

Reading on

Benchmark: 1.525

H.I.: 355.345



DEFINITION/DESCRIPTION of LOCUS (explain why you changed locus numbers):

Today's date: 10 June 2005Locus above: B2902 / B2903Locus parameters: At its widest point, = 2.75 m, from plaster toE boundary - bedrock; N boundary = end of B1716; W boundary = B1600 wall line 2004; S boundary = just S of New B2908

Verbal description:

The matrix of this locus is composed mostly of rocks and cobbles; the soil is fairly compact with ~~the~~ and ~~the~~ around the rocks - clay and silty; light gray to brown in color.

Locus Interpretative Comments (What do you think this is? DATE your comments, continue on additional pages if necessary):

10 June 2005 This locus appears to be wall rubble and wash that has fallen off from the ~~the~~ wall ^{that}. This locus is revealing and possibly stones from B2716. These stones ~~are~~ seem to also possibly be from some of the fill that they put up against the bedrock as a back wall.

[illegible][illegible][illegible]

Year 2005 Trench/Locus B2907 Excavator DFM

DESCRIPTION of PROGRESS of EXCAVATION [date each entry and identify associated pottery pail(s)]:

10 June 2007

Today we started removing the tumble and slope wash that is in the N part of the trench, between the olive tree + the bedrock ~~at~~ the end of B1716. The pail associated w/ this pass is B2907.1.

The purpose of this is to reveal more of the wall B2908 and to find the N face of the E/W cross wall. ~~Once~~ Moving Eward up slope we changed pails (B2907.2) since this soil was up at a higher level. Once we finished this pass, elevations were taken. It was decided to take another pass in this upper area to ~~try~~ remove ~~the~~ the stone + wall tumble. The pail associated w/ this pass is B2907.3. The process was a bit hampered since it was hard to distinguish between tumble and ~~possible~~ wall stones. Much of these stones were sitting upon a lot of soil and so it is clear that we've lost B1716 - though it may at one time have continued all the way to the bedrock.

Year 2005 Trench/Locus B2907 Excavator DFM

DESCRIPTION of PROGRESS of EXCAVATION [date each entry and identify associated pottery pile(s)]:

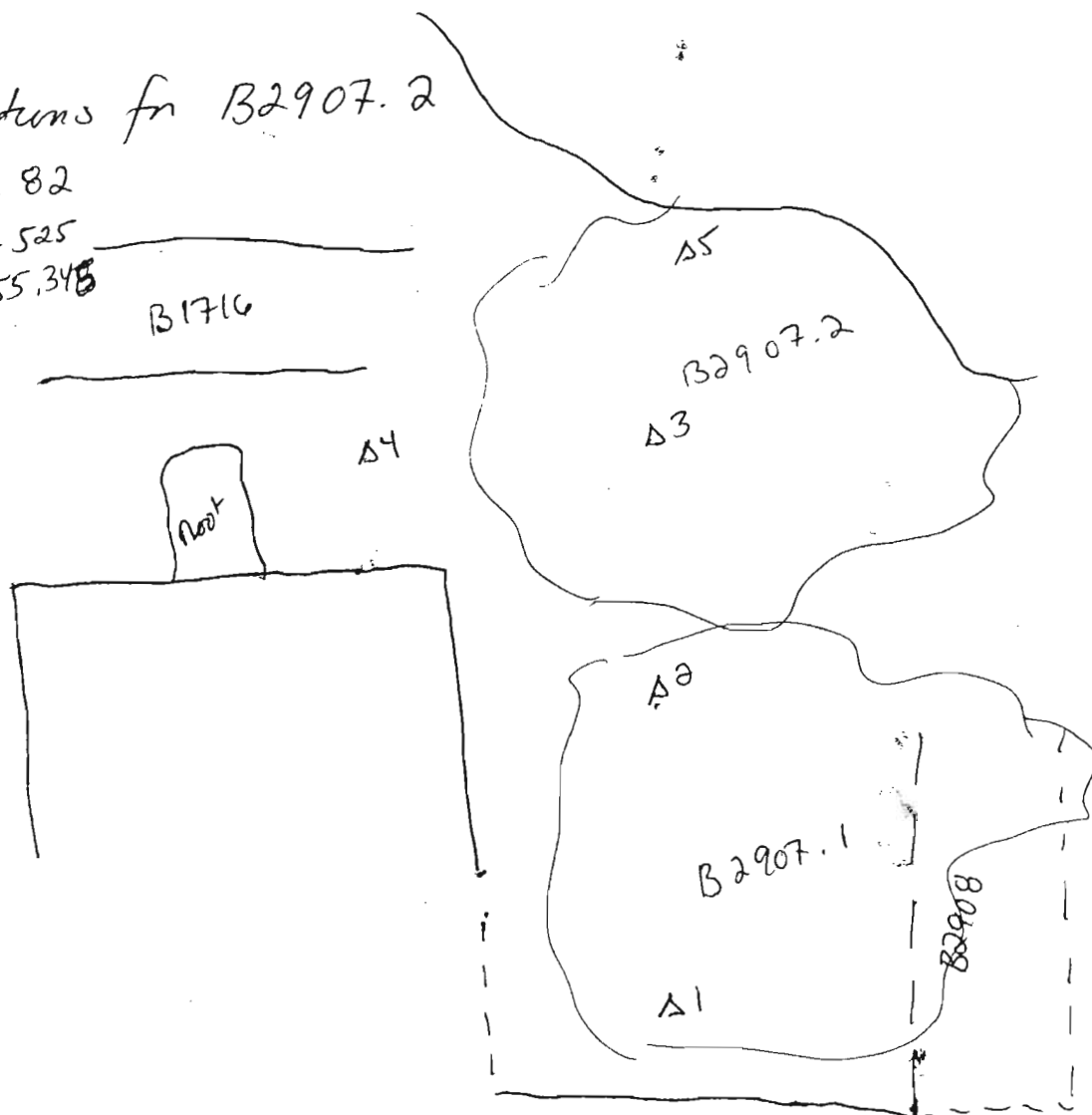
10 June 2005 (cont from pg. 2)

End elevations for B2907.2

$$R72 = 353.82$$

$$\text{Reading} = 1.525$$

$$H.I. = 355.345$$



$$A1 = 2.031 = 353.314$$

$$A2 = 1.683 = 353.662$$

$$A3 = 1.548 = 353.797$$

$$A4 = 1.561 = 353.784$$

$$A5 = 1.462 = 353.883$$

Year 2005 Trench/Locus B2907 Excavator DFM

DESCRIPTION of PROGRESS of EXCAVATION [date each entry and identify associated pottery find(s)]:

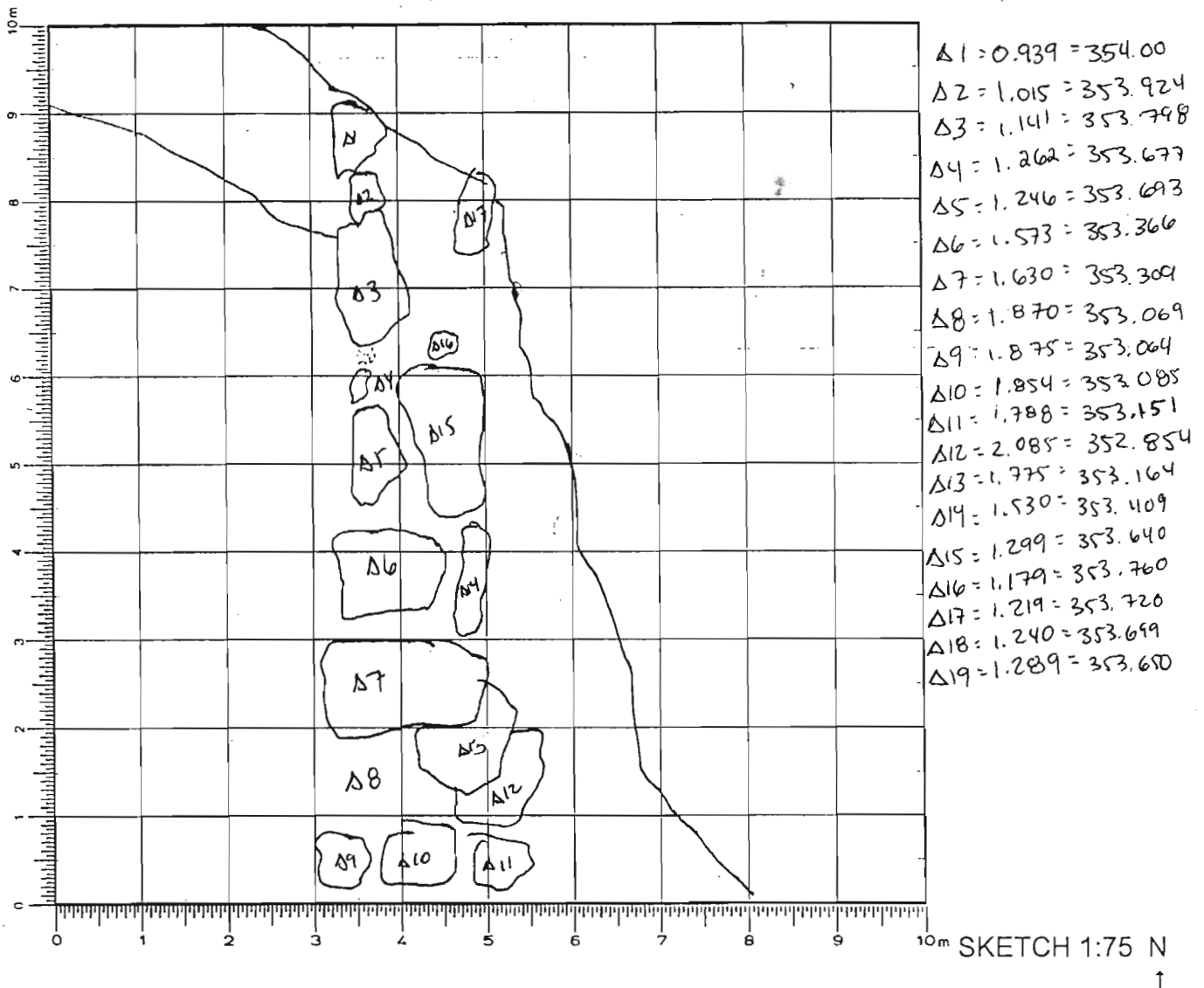
13 June 2005

This morning we continued the pan in the upper portion of B2907 that was not completed on Friday (B2907.3) and so

this pan is associated w/ pottery find B2907.4. The pan rules are associated w/ this find ^{at the} ~~the~~ S end of B1716 and the N face of the new wall B2908. The upper parts of the wall were revealed and so after this locus we were able to ~~see~~ define and see the two faces of the wall B2908. It appears that this wall is probably a continuation of B1605 (E/W cross wall). The wall is ~~preserved~~ preserved at least 2 courses and meets up to the E bedrock line.

Year 2005 Trench/Locus B2908 Excavator DFMElevationsBenchmark used: 112

Reading on

Benchmark: 1.119H.I.: 354.939

DEFINITION/DESCRIPTION of LOCUS (explain why you changed locus numbers):

Today's date: 14 June 2008 - Locus above: B2907

Locus parameters: E boundary = bedrock; ~~the base of B2905 (the wall)~~ W end of wall unclear
 not aligned w/ B1605 Approx. 60cm wide N/S; 2.55m long E/W
 Verbal description:

The wall is composed of roughly cut large rocks and stones packed w/ a dirt + cobblestone matrix. The wall is preserved for at least 2 courses and appears to have been built up to and against the bedrock outcrop that dominates the E side of B2900.

Locus Interpretative Comments (What do you think this is? DATE your comments, continue on additional pages if necessary):

14 June The wall is the continuing E/W cross wall from B1605, though it's a bit at a different angle and it looks like different construction. So perhaps it's not the continuation of B1605....

Year	Trench/Locus	Excavator
------	--------------	-----------

[illegible]

1

[illegible]

AL

[illegible]

Year 2005 Trench/Locus B2909 Excavator DFM

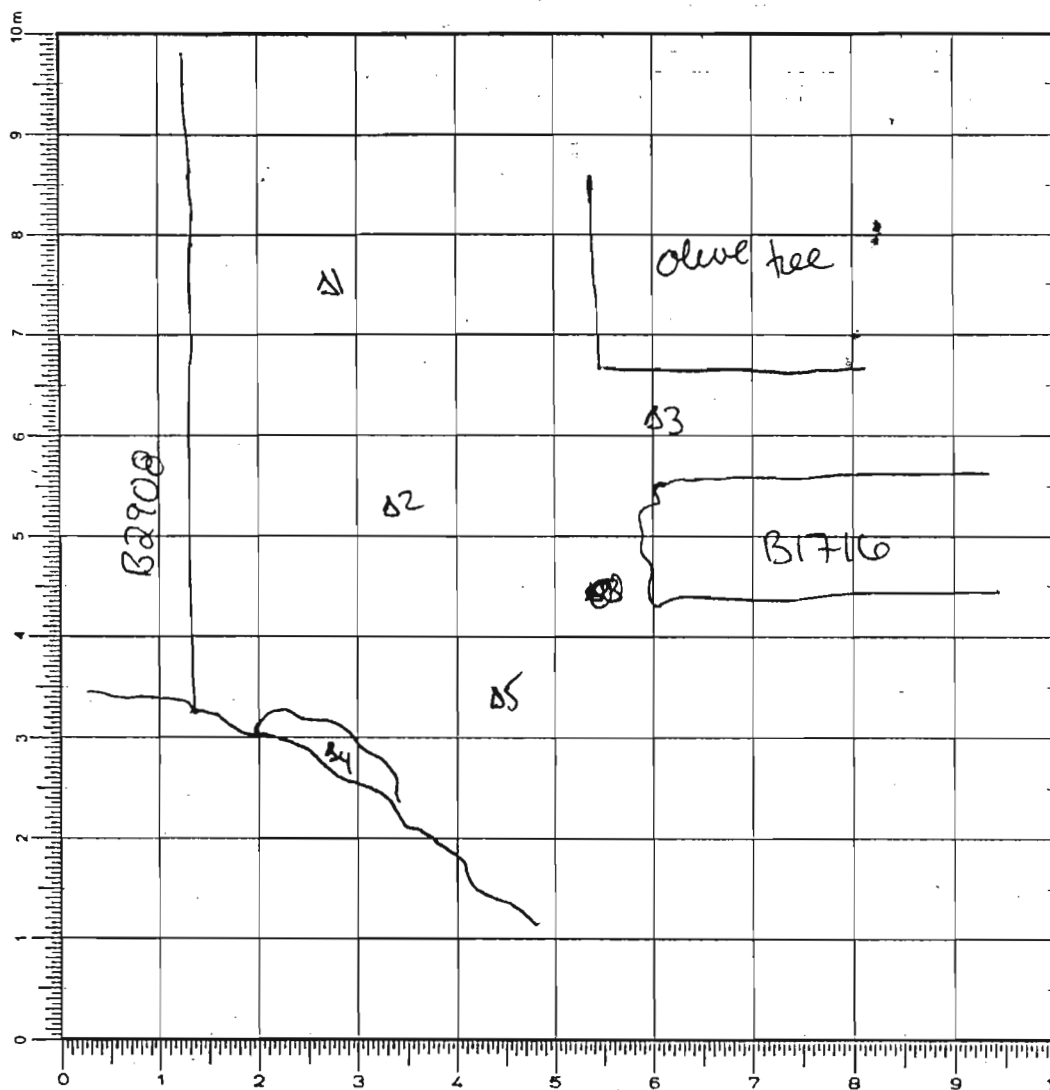
Elevations

Benchmark used: B12

Reading on

Benchmark: 1.401H.I.: 355.221

N →



Top:

 $\Delta 1 = 2.165 = 353.056$ $\Delta 2 = 1.940 = 353.281$ $\Delta 3 = 1.595 = 353.626$ $\Delta 4 = 1.530 = 353.691$ $\Delta 5 = 1.482 = 353.739$

Bottom:

 $\Delta 1 = 1.737 = 353.273$ $\Delta 2 = 1.718 = 353.292$ $\Delta 3 = 1.452 = 353.558$ $\Delta 4 = 1.346 = 353.664$

DEFINITION/DESCRIPTION of LOCUS (explain why you changed locus numbers):

Today's date: 13 June 2005 Locus above: B2907

Locus parameters:

Verbal description:

~~This locus~~ The matrix of this locus is mostly nodules, cobblestone size with a few large ones interspersed. The soil is light brown and in ~~medium~~ has a medium level of compaction.

Locus Interpretative Comments (What do you think this is? DATE your comments, continue on additional pages if necessary):

13 June 2005

This locus is the soil on the N side of E/W crosswall B1605/B2908. There is a fair bit of stones in this area. It ~~for~~ mostly is all the slope wash and

Year

Trench/Locus

Excavator

[illegible]

OBJECTS

[illegible]

ADDITIONAL COLLECTED MATERIAL

[illegible]

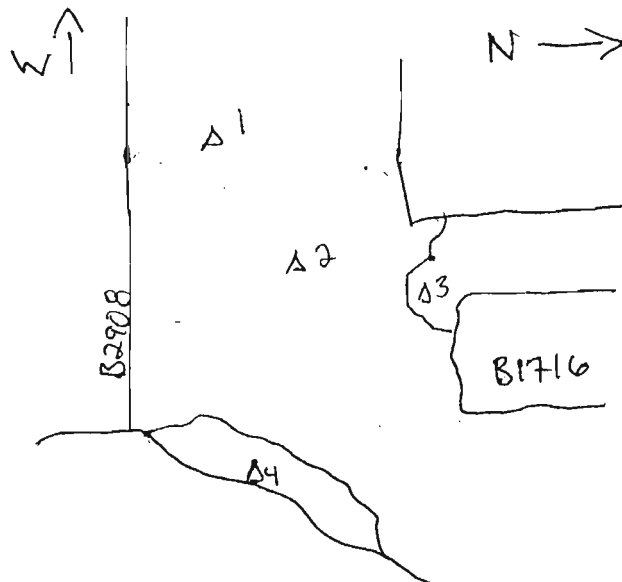
Year 2005 Trench/Locus B2909 Excavator DFM

DESCRIPTION of PROGRESS of EXCAVATION [date each entry and identify associated pottery pair(s)]:

13 June 2005 (Cont. from pg. 1)

... tumble from both B2908 (B1605) and B1716. The pottery pair associated w/ this pass is B2909.1. Once the pass was completed it was decided to take another pass on the N side of B2908 to further reveal the wall and define the courses. The pottery pair associated w/ this pass is B2909.2. It was decided to go no further down in the small space between the wall B2908, the olive tree baulk, bedrock and the end of ~~B2908~~ B1716. Final elevations were

taken



RI2 = 353.82

Reading = 1.189 / 1.190

H.I = 355.01

$\Delta 1 = 1.737 = 353.273$

$\Delta 2 = 1.718 = 353.292$

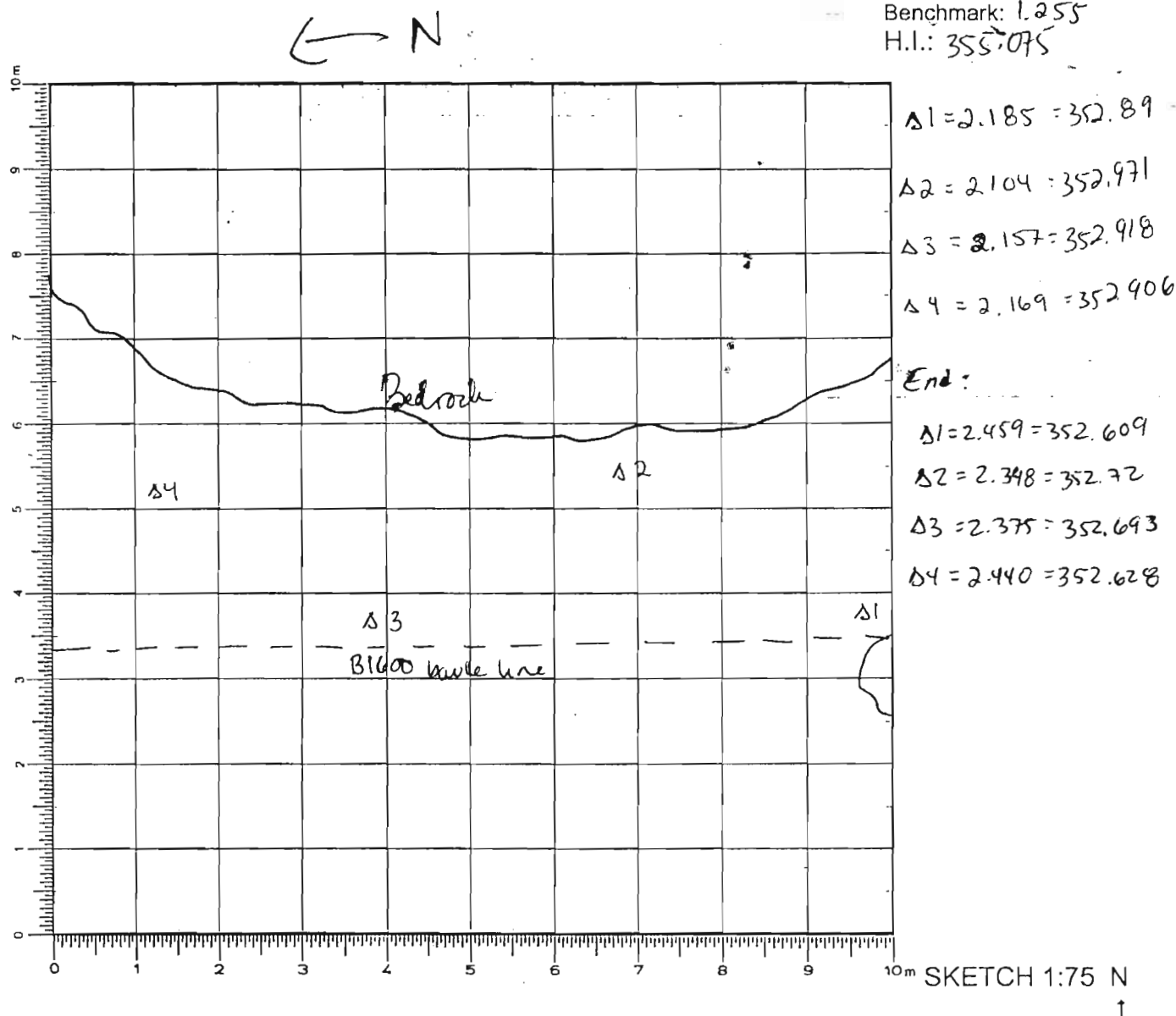
$\Delta 3 = 1.452 = 353.558$

$\Delta 4 = 1.346 = 353.664$

Can bedrock

Year 2005 Trench/Locus B2910 Excavator DFM**Elevations**Benchmark used: R12 (353.82)

Reading on

Benchmark: 1.255H.I.: 355.075

DEFINITION/DESCRIPTION of LOCUS (explain why you changed locus numbers):

Today's date: 13 June 2005 Locus above: B2906Locus parameters: E boundary ~~is~~ in bedrock; N boundary = B2908; W boundary = B1600 old wall line
S boundary = modern terrace wall

Verbal description:

This locus has more of a clayish silty matrix with some gravel and few stones. The color is greyish brown.

Locus Interpretative Comments (What do you think this is? DATE your comments, continue on additional pages if necessary):

13 June 2005

This locus is a result of much slope wash and silt deposited, as well as bedrock erosion. As we removed this layer, the outcropping of bedrock that serves

Year 2005 Trench/Locus B2910 Excavator DFM

DESCRIPTION of PROGRESS of EXCAVATION [date each entry and identify associated pottery find(s)]:

13 June 2005

as the locus' E boundary is moving more ~~more~~ Wward and extending out further into the 'room' towards B1603 (N/S wall). The pass through this strip started at the S end and Tamara progressed Nward toward B2908. The pottery find associated w/ this first pass is B2910.1. We had barely started the pass when it was time to wrap it up for the end of the day. We will continue the work tomorrow...

Before starting the pass, elevations were taken - please see 1st page

Year 2005 Trench/Locus B2910 Excavator DFM

DESCRIPTION of PROGRESS of EXCAVATION [date each entry and identify associated pottery pail(s)]:

14 June 2005

This morning we continued the pass ~~that~~ through B2910 that was barely started yesterday and ~~so~~ the pottery pail associated w/ this pass is B2910.2

Shortly into the pass we found a spindle wheel, and this became obj. #1 - found 80cm from W bank (old B1600 E bank) and 1.85 m from

S bank of B2900. An elevation was taken $R12 = 353.82$. The soil was
Reading = 1.249
H.I = 355.069

being screened and in the screen was found a possible tip (?) of iron and this

was given object #2. There is no exact provenience or elevation for this object since

found in '1/4" screen but it was found during the S half of the pass. Approximately

3.55 m from ~~South~~ bank a shattered pot was found and just N of it was a

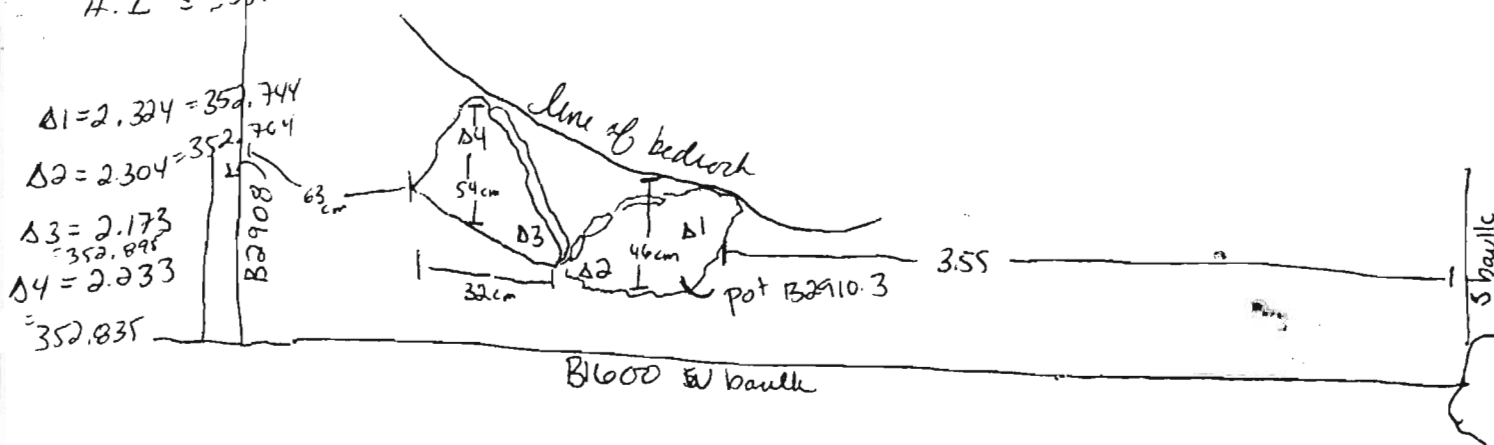
~~cut stone~~ dressed stone fragment. They were both lying on top of a layer of dirt - so it's clear they are not in situ, but it's possible they slipped off the bedrock wall that looks like it was used as a sort of ledge/shelf. The bedrock has been worked all along the lower portion of it and so the pot at least could have fallen from off the bedrock shelf. The pot was fairly complete and so it was given its own pail B2910.3. The soil in the pot was

collected as ~~an~~ intensive soil sample #1 and the soil that was removed during its extraction from around it + underneath was collected and is intensive soil sample #2. Before the pot and dressed stone was removed, elevations were taken →

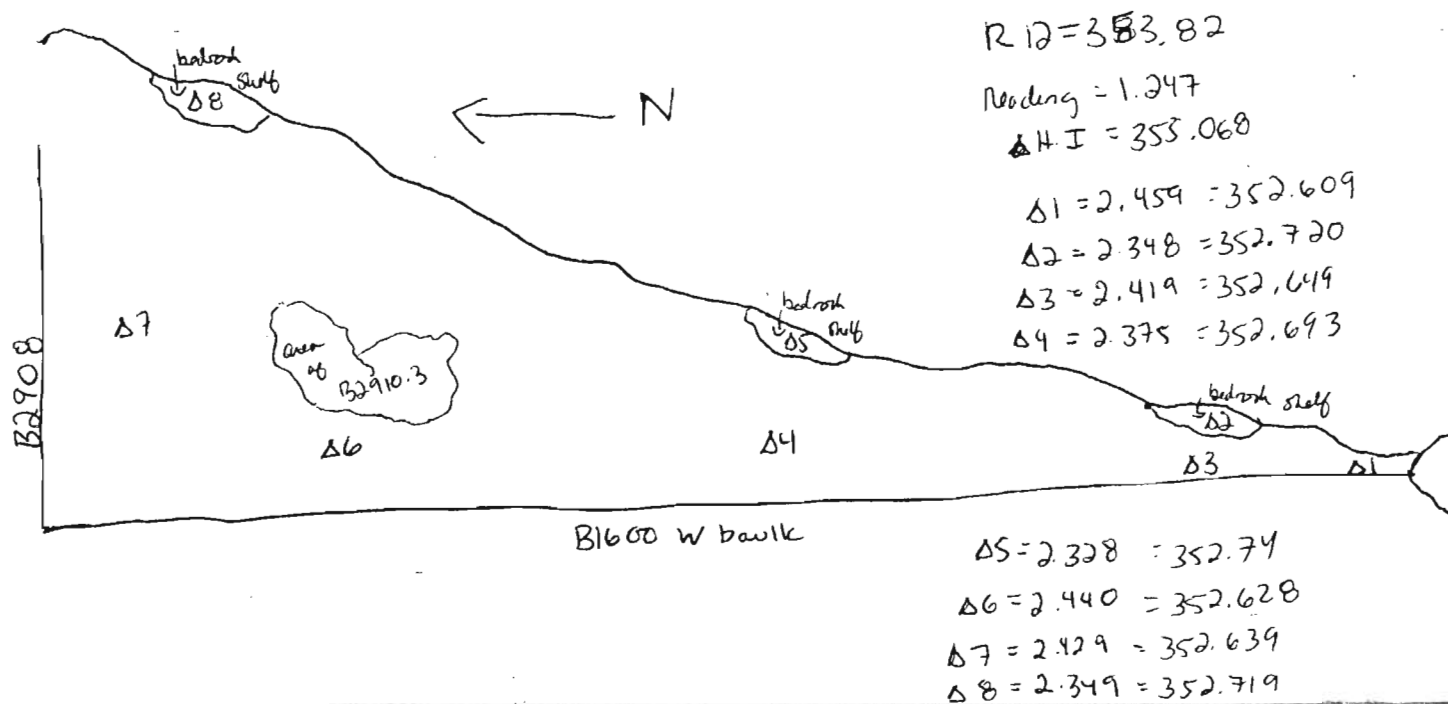
DESCRIPTION of PROGRESS of EXCAVATION [date each entry and identify associated pottery pail(s)]:

14 June 2005 (cont. from pg. 3)

Reading = 1.248
H.I = 355.068



Once the gas ~~was~~ reached B2908, ~~both~~ the pat, ^{dressed stone} rock were removed, elevations were taken - final for this locus stop of B2911

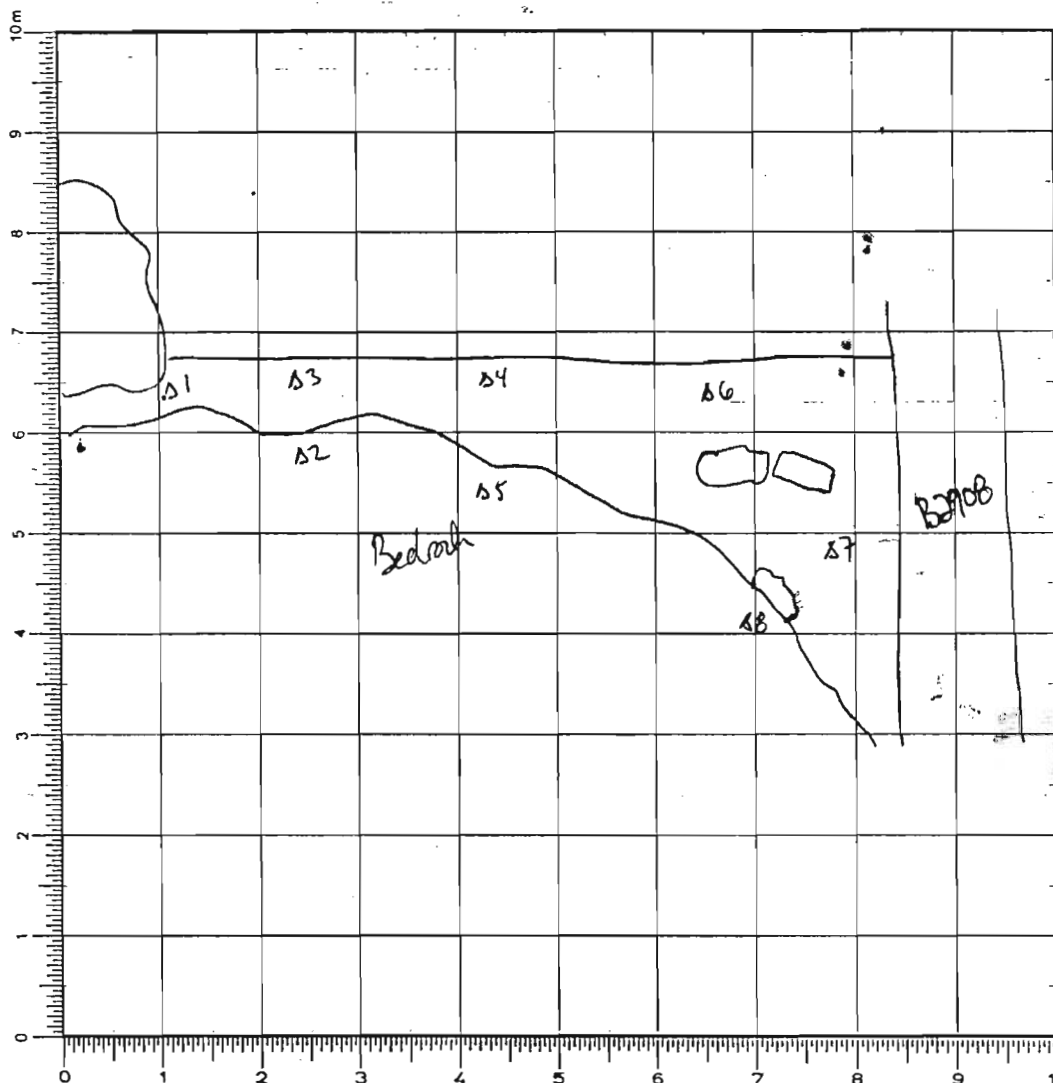


Year 2005 Trench/Locus B2911 Excavator DFM**Elevations**Benchmark used: R12

Reading on

Benchmark: 1.248H.I.: 355.068

N →



Top:
 $\Delta 1 = 2.459 = 352.609$
 $\Delta 2 = 2.348 = 352.72$
 $\Delta 3 = 2.419 = 352.649$
 $\Delta 4 = 2.375 = 352.693$
 $\Delta 5 = 2.328 = 352.74$
 $\Delta 6 = 2.440 = 352.628$
 $\Delta 7 = 2.429 = 352.639$
 $\Delta 8 = 2.349 = 352.719$

End:

$\Delta 1 = 2.899 = 352.163$
 $\Delta 3 = 2.859 = 352.203$
 $\Delta 4 = 2.805 = 352.257$
 $\Delta 6 = 2.714 = 352.318$

DEFINITION/DESCRIPTION of LOCUS (explain why you changed locus numbers):

Today's date: 14 June 2005 - Locus above: B2910Locus parameters: W boundary = B1600 baulk line; E boundary = bedrock; N = B2908; S = bedrock

Verbal description: Widest point of this locus is .90m from bedrock to B1600 baulk; smallest width is approximately 20 cm in line of corner outcrop of bedrock in S end of trench. Soil is very loose and gravelly (?) brown to red

Locus Interpretative Comments (What do you think this is? DATE your comments, continue on additional pages if necessary):

14 June 2005

This locus is what is left of the strip of soil left of a point of modern terrace wall and so after removing this surface locus, the level at which

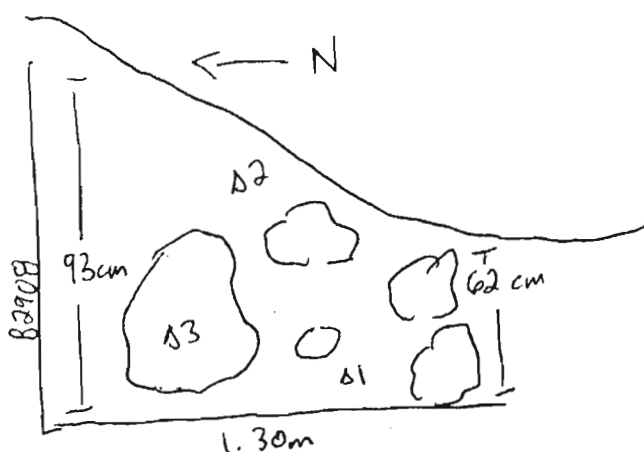
[illegible][illegible][illegible]

Year 2005 Trench/Locus B2911 Excavator DFM

DESCRIPTION of PROGRESS of EXCAVATION [date each entry and identify associated pottery pair(s)]:

14 June 2005 (cont from pg. 1)

... They reached E of B1603 is even ~~with~~ all the way up to the bedrock. ~~The description was taken~~ The pass started @ the Seal and continued Nward. The bedrock finally stops sloping Wward and now is more of a straight drop into the soil. The pottery pair associated w/ this part of the pass is B2911.1. Approximately 1.30m from N bank (ie B2908) in the same area where the Brattled pot and dressed stone were lying there was a cluster of rocks and the soil was ~~a bit~~ a slightly different color - a more yellowish/greenish brown and so @ that point I decided to dig. The pottery pairs in case the rock cluster turned out to be a feature - and so the pottery pair associated w/ this section of the pass is B2911.2. Elevations were taken of this cluster of rocks and the dirt was removed around the stones



$$R12 = 353.82$$

$$\text{Reading} = 1.247 (355.068)$$

$$\Delta 1 = 2.484 = 352.584$$

$$\Delta 2 = 2.455 = 352.613$$

$$\Delta 3 = 2.362 = 352.706$$

Year 2005 Trench/Locus B2911 Excavator DFM

DESCRIPTION of PROGRESS of EXCAVATION [date each entry and identify associated pottery pail(s)]:

15 June 2005

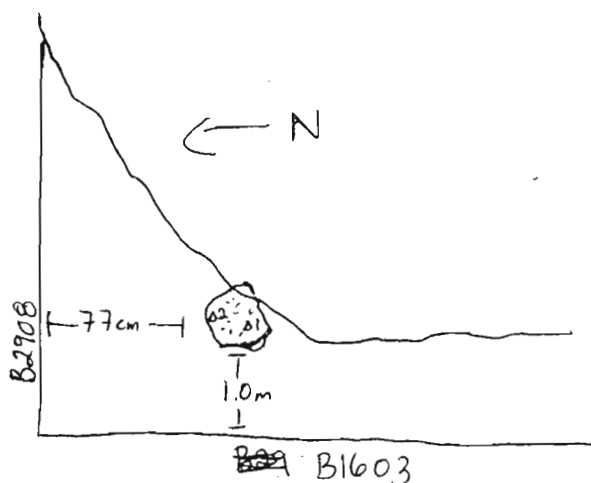
This morning we cleared out a couple of stones that were left in ~~after~~ after finishing B2911.2 in the N corner of B2900 against the bedrock and the stone quern fragment that was leaning against the bedrock between the rocks. The pottery pail associated w/ this ~~soil~~ soil is B2911.3. It was clear that the rocks were simply resting upon a layer of soil + were not part of any particular feature. Most likely these rocks were rubble from B2908. The stone quern became object #1 for B2911.3. Elevations were taken and a photograph of the quern fragment as site was taken.

Obj. #1 = stone quern (4.5 cm thick
C29 cm wide)

K12 = 353.82

Reading = 1.243

H.I. = 355.063

 $\Delta 1 = 2.554 = 352.509$ $\Delta 2 = 2.729 = 352.334$ 

Year 2005 Trench/Locus B2912 Excavator DFM

Elevations

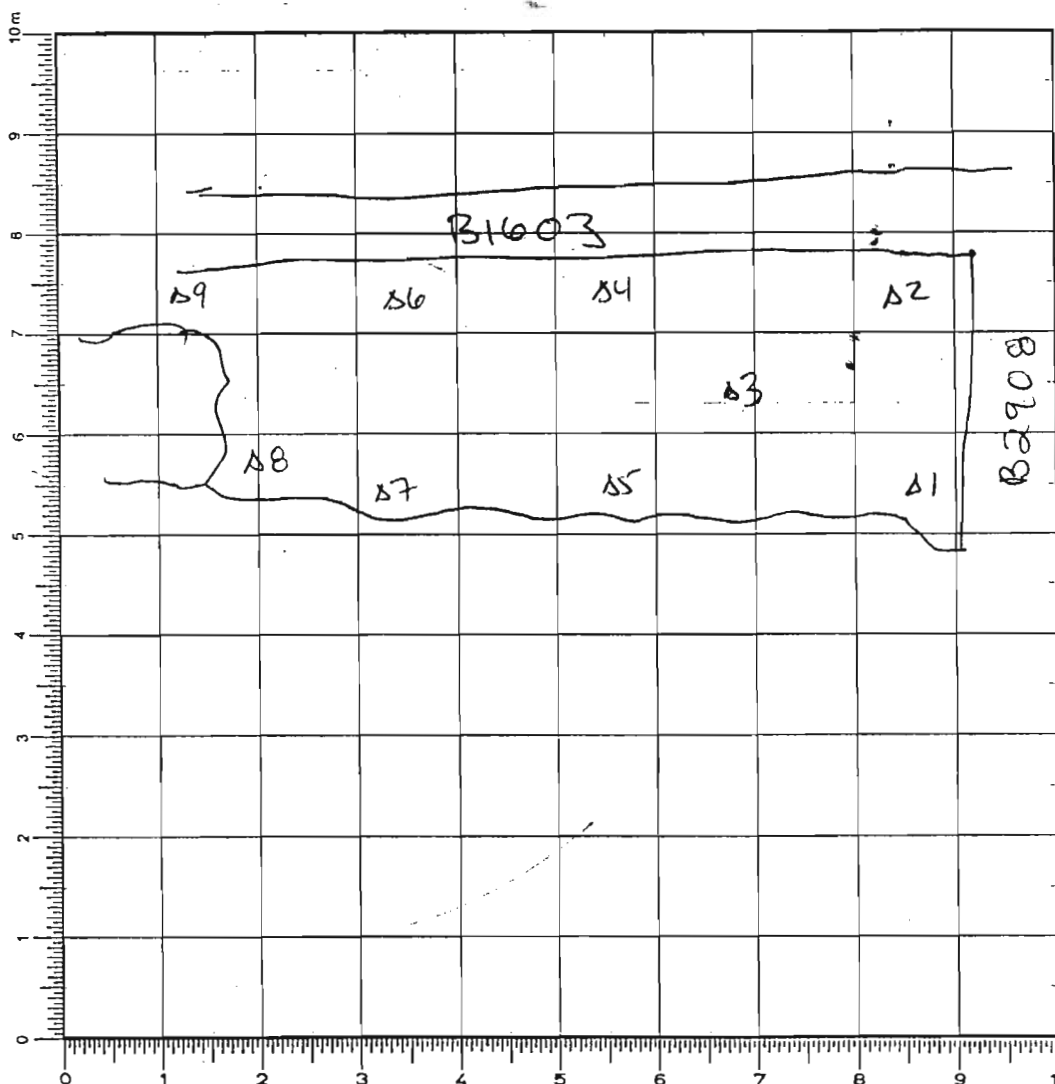
Benchmark used: ~~R13~~ R13

Reading on

Benchmark: 2.66

H.I.: 354.79

N →



Top:

 $\Delta 1 = 2.60 = 352.19$ $\Delta 2 = 2.63 = 352.16$ $\Delta 3 = 2.45 = 352.34$ $\Delta 4 = 2.50 = 352.29$ $\Delta 5 = 2.44 = 352.35$ $\Delta 6 = 2.44 = 352.35$ $\Delta 7 = 2.39 = 352.40$

End: R12

Reading = 1.242

 $\Delta 1 = 2.714 = 355.062$ $\Delta 2 = 2.779 = 352.348$ $\Delta 3 = 2.765 = 352.297$ $\Delta 4 = 2.832 = 352.23$ $\Delta 5 = 2.805 = 352.257$ $\Delta 6 = 2.854 = 352.208$ $\Delta 7 = 2.859 = 352.203$ $\Delta 8 = 2.899 = 352.163$ $\Delta 9 = 2.971 = 352.091$

SKETCH 1:75 N

DEFINITION/DESCRIPTION of LOCUS (explain why you changed locus numbers):

Today's date: 15 June 2005 Locus above: B2911Locus parameters: W boundary = B1603; E boundary = bedrock; N = B2908; S = ~~bedrock~~ outcrop in S end

Verbal description: The ~~soil~~ matrix of the soil is fairly compact and is composed of a mixture of roofing clay, disintegrated bedrock, and silt wash. There are a few rocks but were probably tumble.

Locus Interpretative Comments (What do you think this is? DATE your comments, continue on additional pages if necessary):

15 June 2005
 The ^{top of} locus B2912 is the ^{top of the} level Sheri reached last season (2004) in front of B1603 - the N/S crosswall. It was clear that she hadn't come down

[illegible][illegible][illegible]

Year 2005 Trench/Locus B2912 Excavator DFM

DESCRIPTION of PROGRESS of EXCAVATION [date each entry and identify associated pottery pail(s)]:

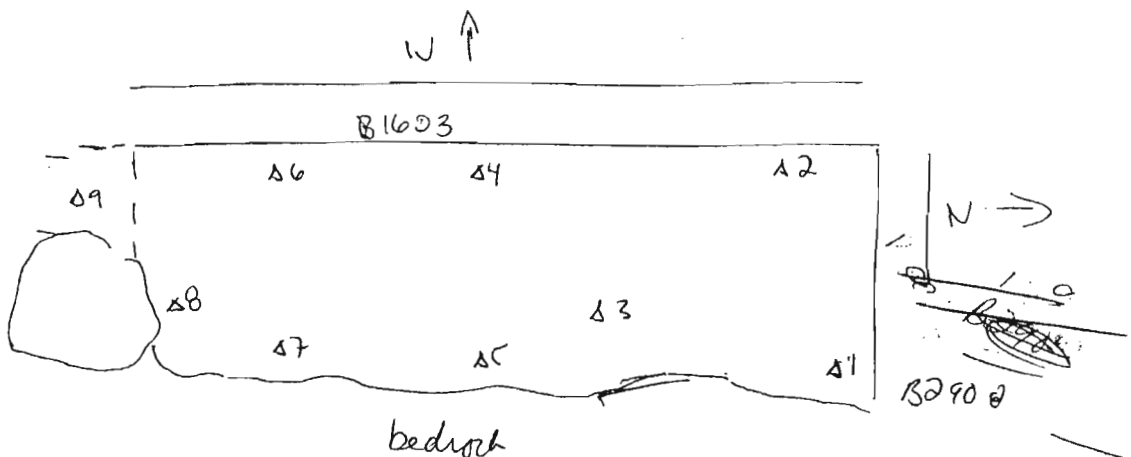
15 June 2005 (cont. from 13th)

... upon a floor surface yet. So we started a pass in the N end of the trench by B2908 and worked our way Sward. The soil was fairly ^{comp}act and was predominantly roofer, clay and habitation debris of bone, shell and pottery fragments. There was a fair bit of shell in the N half of the trench. The soil along the bedrock line was not as much roofing clay, but ~~was~~ disintegrated bedrock, and silt and dirt - so the color was more reddish brown than the ~~set~~ silty grey of the roofing clay. The pottery pail associated w/ this pass is B2912.1. We came down upon a possible floor surface, but it was hard to tell - the soil was still fairly soft, but there were some pottery shards & things here, etc. It was decided to take another pass, yet ~~not~~ ~~at~~ ~~the~~ ~~same~~ ~~place~~ as a new locus. So elevations were taken -

R12 = 353.82

Reading = 1.242

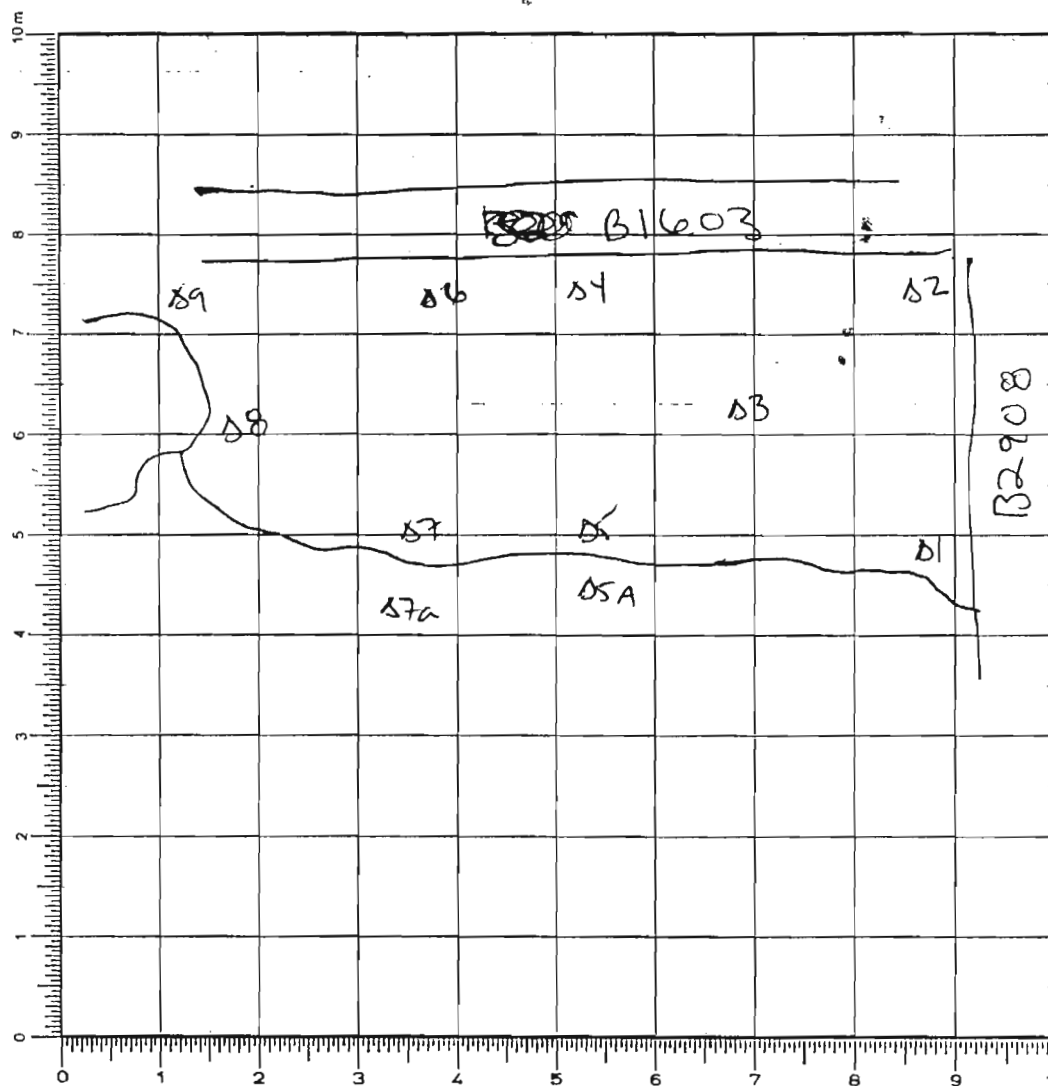
H.I. = 355.062

 $\Delta 1 = 2.714 = 352.348$ $\Delta 2 = 2.779 = 352.283$ $\Delta 3 = 2.765 = 352.297$ $\Delta 4 = 2.832$ $\Delta 5 = 2.805$ $\Delta 6 = 2.854$ $\Delta 7 = 2.859$ $\Delta 8 = 2.899$ $\Delta 9 = 2.971$ 

Year ~~B2913~~ 2005 Trench/Locus B2913 Excavator DFM

Elevations

Benchmark used: RG12
 Reading on
 Benchmark: 1.242
 H.I.: 355.062



Top:
 $\Delta 1 = 2.714 = 352.348$
 $\Delta 2 = 2.779 = 352.283$
 $\Delta 3 = 2.745 = 352.297$
 $\Delta 4 = 2.834 = 352.23$
 $\Delta 5 = 2.805 = 352.257$
 $\Delta 6 = 2.854 = 352.208$
 $\Delta 7 = 2.859 = 352.203$
 $\Delta 8 = 2.899 = 352.163$
 $\Delta 9 = 2.971 = 352.091$

End: RG12 = 353.82
 Nailing = 1.172
 H.I. = 354.992

$\Delta 1 = 2.727 = 352.265$
 $\Delta 2 = 2.828 = 352.164$
 $\Delta 3 = 2.765 = 352.227$
 $\Delta 4 = 2.819 = 352.173$
 $\Delta 5 = 2.840$ ^{352.152} $\Delta 5A = 2.883$ ^{352.104}
 $\Delta 6 = 2.866 = 352.126$
 $\Delta 7 = 2.869$ ^{352.123} $\Delta 7A = 2.934$ ^{352.058}
 $\Delta 8 = 2.957 = 352.035$
 $\Delta 9 = 2.905 = 352.027$

SKETCH 1:75 N

DEFINITION/DESCRIPTION of LOCUS (explain why you changed locus numbers):

Today's date: 15 June 2005 Locus above: B2912

Locus parameters: W boundary = B1603; E boundary = bedrock; N = B2908; S = bedrock
 Outcrop in S end

Verbal description:

The matrix is fairly compact, composed mostly of roofing clay and possibly floor packing. Mixed debris of bone, shell, pottery + etc.

Locus Interpretative Comments (What do you think this is? DATE your comments, continue on additional pages if necessary):

15 June 2005 ~~This locus~~ We decided to change locus because we wanted to see if there was a better preserved floor surface

Year 2005 Trench/Locus B2913 Excavator DFM

DESCRIPTION of PROGRESS of EXCAVATION [date each entry and identify associated pottery find(s)]:

15 June 2005

... under the garbage floor revealed by B2912. The pan was started ~~at~~^{at} the middle of the trench where there would be the best area for preservation. Quickly it was revealed that there was a floor surface under B2912. The pottery find associated with this pan is B2913.1. The floor erodes away along the back and the S end of the trench. Upon this surface we found a spindle wheel - Obj #1 ; it lay 11 cm from B7603 and 1.43 from N bank (end of B1603)

RI2 = 353.82
 Reading = 1.242
 H.I. = 355.062
 reading - 2.854 = 352.208 Final elevations were taken once the pan was completed