

Azoria 2005
Trench Report for B3500
DFM
21 July 2005

Excavation Dates: June 29-July 14 2005

Datum Points: RG 1 (345.826)

Location: B3500 is located on the lowermost terrace and is bounded to the north by B3400 and the eastern, western, and southern parameters were arbitrarily set with the purpose to locate possible architectural features to define the area. The trench runs approximately 8.0m N-S at its longest point and 7.0m E-W at its widest point.

Purpose of Excavation: To investigate the area south of B3400, a room bounded to the east by a spine wall that appears to run continuously to the south.

Depositional History: Excavation of B3500 ended with an investigation in the northern half of the trench, along the western edge of a line of stones, represented by locus B3515. This locus is probably a mixture of wall bedding (for B3503 and B3508) and habitation debris from the room just to the east, enclosed by B3508, B3504, and B3512. It is possible that the front part of this room was roofed by some form of portico, since a pillar base was uncovered by B3515 and is in close alignment with another cut stone to the south. Loci B3513 and B3514 are deposits of habitation debris above two separate floor surfaces in the northern and southern half of the trench respectively; though are most likely roughly contemporary with one another. The surface exposed by B3513 is defined by B3510 (stone bench), B3511 (plaka bench), and B3512 (bedrock bin). In addition, a hearth/bin (B3516) that was built up against B3512 was also revealed by this locus. An exceptional object found upon the floor surface was a perfectly preserved iron arrowhead. There were some indications of burning by patches of dark, burnt soil and chunks of carbon, though the patches were fairly small in size. The surface uncovered by B3514 is bordered by the southern edge of B3512 and B3504. The surface disappears approximately 1.0m to the south from B3512 as it reaches the point where the wall packing begins for a robbed out E-W cross wall that abutted B3404. Only a rather large boulder set against B3504 remains of this wall. The majority of the pottery from these loci date to the Hellenistic and Late Archaic periods, which would then suggest a Hellenistic reuse of this Late Archaic building. Above the surface revealed by locus B3513 is B3509, a deposit of ceiling clay and habitation debris over a later floor surface. The removal of this locus unveiled a low lying plaka bench running parallel to B3508, built up along the wall's southern face. Again, as with locus B3513, there were some patches of burnt soil and chunks of carbon, particularly along the S edge of B3511 (plaka bench), but were relatively small in size. Three informative objects related to locus B3509 are a substantial piece of pumice, a stone quern fragment and a spindle whorl. The quern was resting upon the surface, but was not removed until locus B3513. Above locus B3509 was locus B3507, a sizable stratum of wall tumble and ceiling debris that banked high against the W face of B3504 and thinned out as it extended west down the natural slope of the landscape, particularly in the northern half of the trench. There was a lack of wall tumble and ceiling clay in the southern half of the trench, except for right against the W face of B3504. It appears that this southern area was heavily disturbed

when the modern terrace wall that cut across the southern end of the B3500 was built. The stones from the wall tumble were more than likely used to build the modern terrace wall, as well as the stones from the E-W cross wall that had once joined up with B3504 in its southern part. A few of the interesting finds from this locus are some type of metal object, a couple of stone tool fragments, a spindle whorl, and a large cluster of bones nestled against the southern half of B3504, embedded in the ceiling clay that was packed up against the W edge of B3504 and the northern edge of the large boulder set against B3504. The bones are the remains of at least one pig that had been butchered and disarticulated. Above this locus, across the whole trench, was locus B3505, a deposit of slopewash W of B3504. Two spindle whorls, two stone tools, and a stone quern fragment are the objects from this locus and all of them come from the western half of the space defined by B3504 and B3508. Above locus B3505 was locus B3502, a layer of slopewash. Finally, excavation began with the removal of topsoil, Locus B3501.

Conclusions: B3500 is likely an interior space used for either for domestic industry or as a specialized workspace. It is unclear as to its relationship with B3400 and whether there was any access/communication between the two rooms/buildings. The large number of stone tools, querns, spindle whorls, and architecturally defined workspaces (B3510, B3511) and storage spaces (B3512 and B3516?) clearly indicate that there was some sort of work activity and processing going on in this space. It is apparent that this building has at least two phases of occupation, represented by a Late Archaic floor surface and a Hellenistic floor surface suggesting a reuse of the building, based on the deposited pottery.

Loci List:

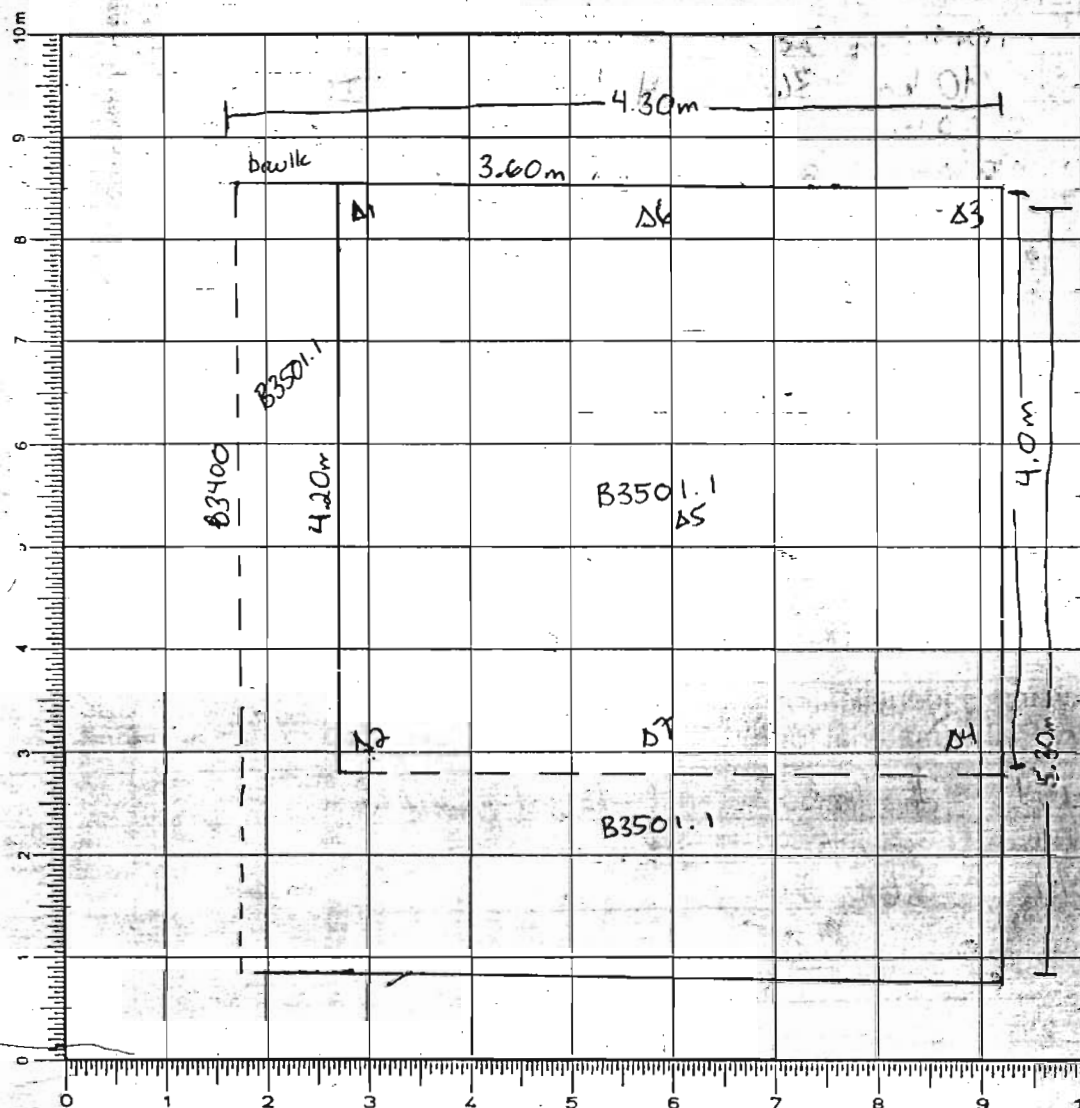
B3501: Topsoil
B3502: Slopewash
B3505: Slopewash W of B3504
B3507: Wall tumble/Ceiling Clay
B3509: Ceiling Clay/Habitation Debris over Surface
B3513: Floor Packing/Habitation Debris over Surface
B3514: Ceiling Clay/Habitation Debris over Surface
B3515: Wall packing/Habitation Debris

Architectural Features:

B3503: E-W wall in north
B3504: N-S wall in east
B3508: E-W wall, running parallel to B3503, later wall than B3503
B3510: N-S two course stone bench, parallel to B3504
B3511: E-W two course plaka bench, parallel to B3508
B3512: Bedrock bin, with line of large cut stones as southern boundary
B3516: Hearth/Bin in center of room, built up against B3512

Year 2005 Trench/Locus B3501 Excavator DFM**Elevations**

Benchmark used: RG1 (345.826)
 Reading on
 Benchmark: 1.956
 H.I.: 347.782



Top Elevations
 $\Delta 1 = 0.619 = 347.163$
 $\Delta 2 = 1.090 = 346.692$
 $\Delta 3 = 0.549 = 347.233$
 $\Delta 4 = 1.193 = 346.589$
 $\Delta 5 = 0.774 = 347.008$

Final Elevations
 $\Delta 1 = .699 = 347.087$
 $\Delta 2 = 1.340 = 346.446$
 $\Delta 3 = 0.684 = 347.102$
 $\Delta 4 = 1.228 = 346.558$
 $\Delta 5 = 1.000 = 346.786$
 $\Delta 6 = 0.724 = 347.062$
 $\Delta 7 = 1.308 = 346.478$

Reading = 1.960
 H.I. = 347.786

DEFINITION/DESCRIPTION OF LOCUS (explain why you changed locus numbers):

Today's date: 29 June 2005 Locus above: —

Locus parameters: N boundary = B3400; S boundary = arbitrary line approx 4.30m from N; E boundary = approx 1.50m from modern terrace wall; W boundary = line of old terrace wall; for exact measurements, see plan
 Verbal description:

The nature of the soil is fairly loose, much vegetation + roots; not too many rocks, soil is gravelly and light brown; there is a fair bit of pottery + bone w/in the soil.

Locus Interpretative Comments (What do you think this is? DATE your comments, continue on additional pages if necessary):

This locus is topsoil of the terrace and it lies just below the modern terrace wall to the E. There is much slope wash and some tumble close to the wall, though the extent of the trench does not

Year 2005 Trench/Locus B3501 Excavator DFM

DESCRIPTION of PROGRESS of EXCAVATION [date each entry and identify associated pottery find(s)]:

29 June 2005 (cont. from pg. 2)

... extend to the knave wall.

Trench ~~B3500~~ B3500 lies S of B3400 and first the dimensions of the trench were laid out. We decided to leave a baulk of approx 50 cm between B3400 + B3500, though the baulk would be removed after each pass was taken through the trench. See pg. 1 for sketch of trench. Once the ~~line~~ boundaries were outlined excavation began in the W half and moved Eward. A fair amount of pottery was discovered and the pottery find associated w/ this first pass is B3501.1. In the W half, during excavation three stone tools were found w/in the soil removed by the kasma. As a result, ~~the~~ no elevations were taken because it was unclear as to exactly where the ^{tools} stones had come from. These were labeled Obj. #1 - Obj #3. The pass itself was fairly shallow, though the kasma was used - only a few ~~stones~~ ^{small tools} were removed part of the matrix. Once the pass was finished, we took down the 50 cm baulk betw. B3400 + B3500. This pottery from this pass was put in the same pail since it was still topsoil + there was no distinction. In addition, ~~we~~ ^{at} and also part of the same pail B3501.1 we fixed up the E W boundary line and took down the level of soil to the level of the trench after the 1st pass. This small

Year 2005 Trench/Locus B3501 Excavator DFM

DESCRIPTION of PROGRESS of EXCAVATION [date each entry and identify associated pottery pail(s)]:

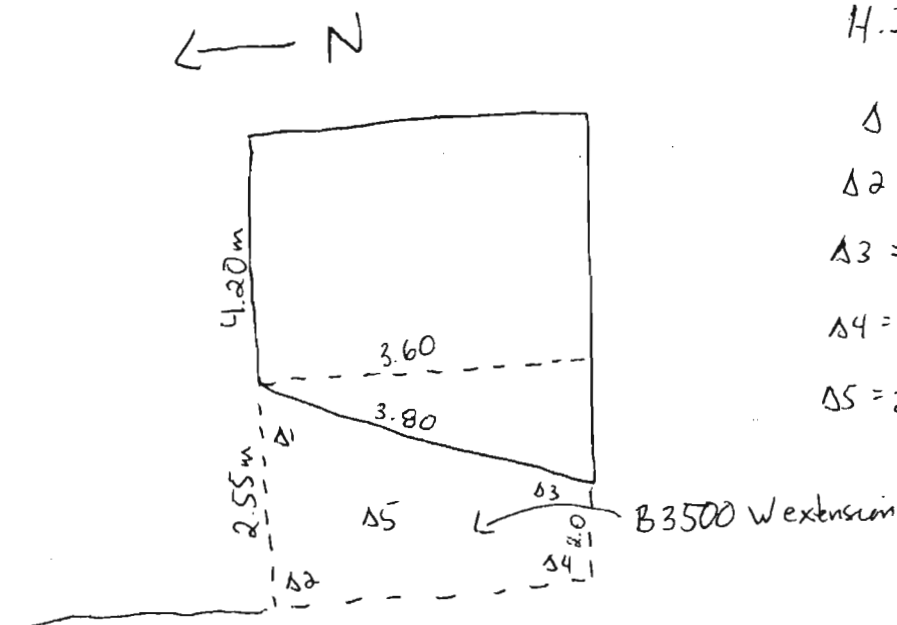
... baulk was left to help preserve the wheel barrel path that cut through the W end of our trench. Before moving on to the next locus we scraped ^{swept} down the soil betw. the modern terrace wall to the E of our trench and E boundary of B3500. Then we cut a step into the E baulk to help prevent any contamination from the slope above. Any pottery found during this process was included in the B3501.1 pail since it ~~is~~ is all the same top soil + eroded ~~slope~~ wash that covers the terrace. Once the pan was completed, we took the final elevation for ~~B3501~~ B3501, which ~~was~~ is also the top elevation for B3502.

Year 2005 Trench/Locus B3501 Excavator DFM

DESCRIPTION of PROGRESS of EXCAVATION [date each entry and identify associated pottery pail(s)]:

01 July 2005

This morning we decided to extend the trench W ward and so we removed the layer of topsoil that was covering the area. The pottery pail associated w/ this pan is ~~B3501.1~~ B3501.2. The W boundary of the extension of B3500 ~~is~~ lines up w/ the W boundary of B3400. The dimensions of the extension is as follows; as well as elevations



Top Elevations =

345.826

RG 1 = 2.161

H.I = 347.987

$\Delta 1 = 1.968 = 346.019$

$\Delta 2 = 2.328 = 345.659$

$\Delta 3 = 2.020 = 345.967$

$\Delta 4 = 2.730 = 345.257$

$\Delta 5 = 2.281 = 345.706$

Bottom elevations:

$\Delta 1 = 2.025 = 345.962$

$\Delta 2 = 2.389 = 345.578$

$\Delta 3 = 2.278 = 345.709$

$\Delta 4 = 2.749 = 345.238$

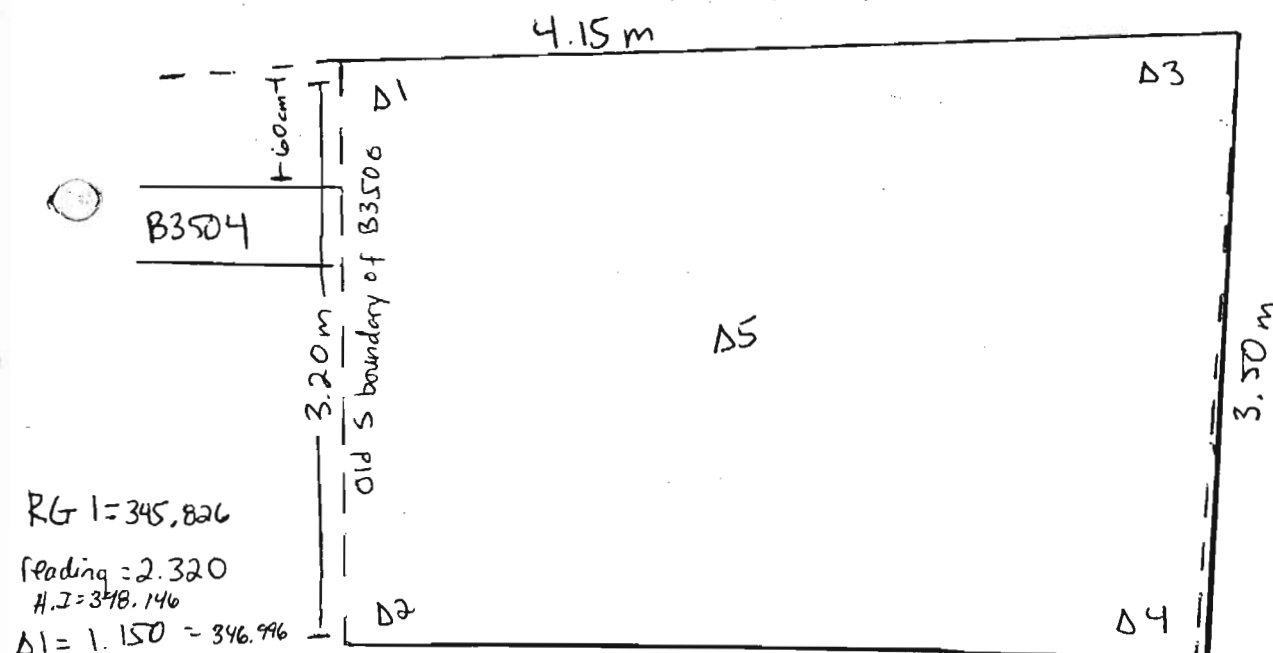
$\Delta 5 = 2.408 = 345.579$

Year 2005 Trench/Locus B3501 Excavator DFM

DESCRIPTION of PROGRESS of EXCAVATION [date each entry and identify associated pottery pail(s)]:

05 July 2005

This afternoon, it was decided to extend the trench B3500 S the hopes to find the continuation of B3504 and find the S wall to the room formed by B3504 + B3508. The measurements + elevations for (CN/S) (E/W) this new part of B3500 is as follows:



RG 1 = 345.826

Reading = 2.320

H.I. = 348.146

D1 = 1.150 = 346.996

D2 = 1.620 = 346.526

D3 = 1.108 = 347.038

D4 = 1.450 = 346.696

D5 = 1.422 = 346.726

The pottery pail associated w/ this part is B3501.3.

We did not get too far across the trench and so we will continue removing this topsoil layer tomorrow.

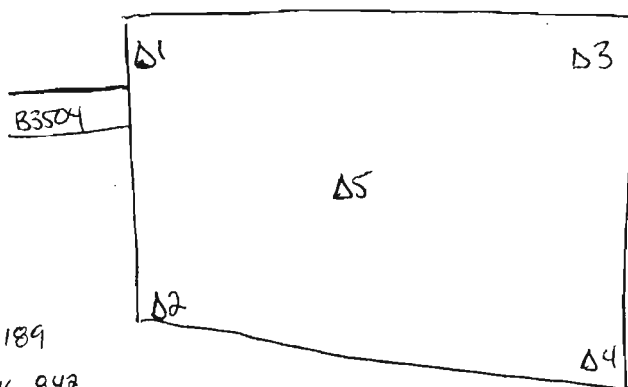
Year 2005 Trench/Locus B3501 Excavator DFM

DESCRIPTION of PROGRESS of EXCAVATION [date each entry and identify associated pottery find(s)]:

06 July 2005

This morning we continued the pass through the top soil that was started yesterday (B3501.3) and so the pottery find associated w/ this pass is B3501.4. The pass started at the W end and worked

towards the E bank line of the new southern extension. The E ~~extension~~ edge of this ^S extension goes just beyond (c. 60cm) B3504 to ensure that we catch the continuation of the wall since it appears to slightly curve Eward. At the end of this pass, elevations were taken for B3501.4.



345.826

261 = 2.363

H.I. = ~~347.189~~ 348.189Δ1 = 1.347 = ~~347.189~~ 346.842

Δ2 = 1.822 = 346.367

Δ3 = 1.291 = 346.898

Δ4 = 1.593 = 346.596

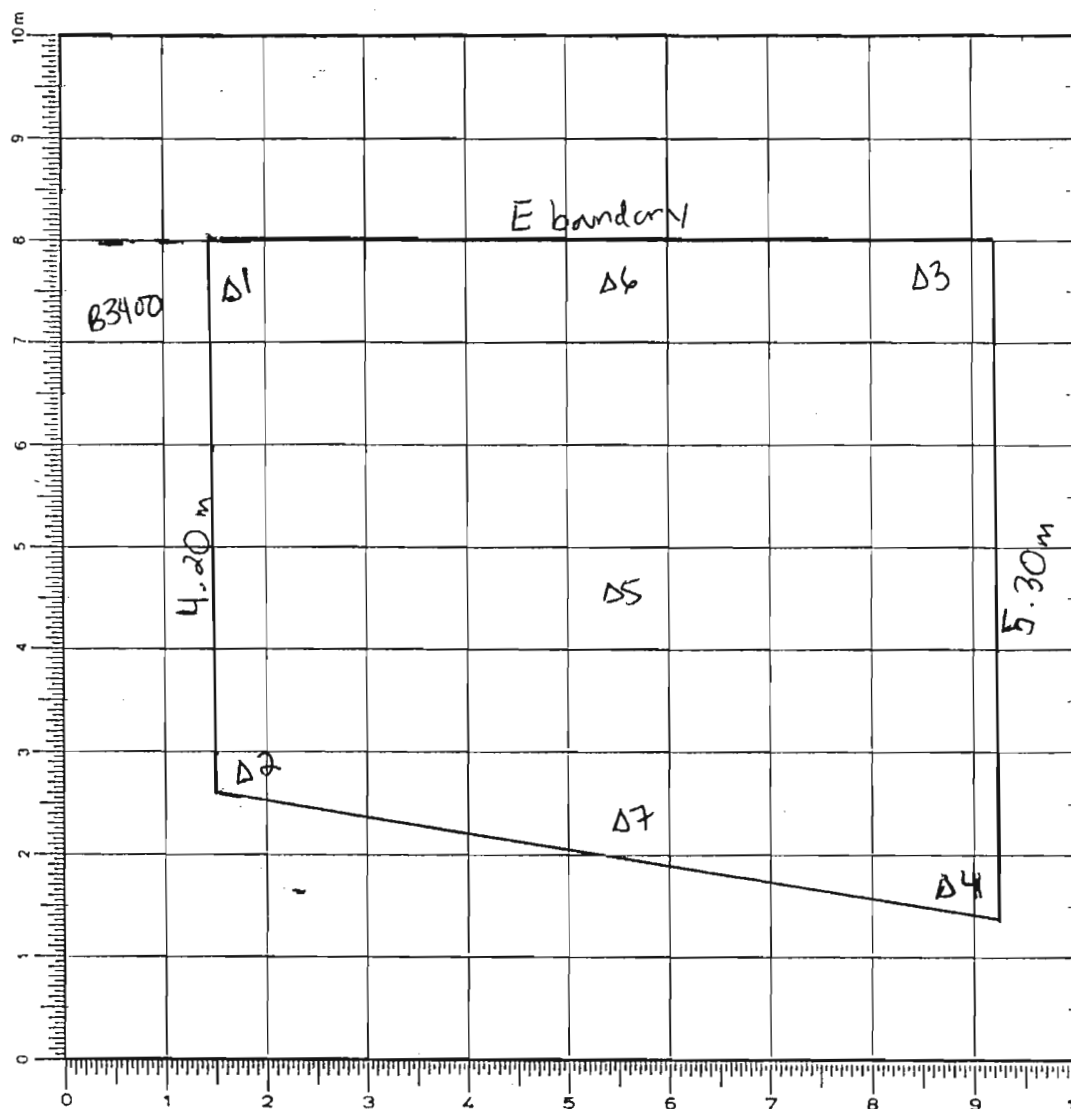
Δ5 = 1.600 = 346.589

Year 2005 Trench/Locus B3502 Excavator DFM**Elevations**Benchmark used: RG103

Reading on

Benchmark: 1.960H.I.: 347.786

← N

**Top Elevations** $\Delta 1 = .699 = 347.087$ $\Delta 2 = 1.340 = 346.446$ $\Delta 3 = 0.684 = 347.102$ $\Delta 4 = 1.228 = 346.558$ $\Delta 5 = 1.000 = 346.786$ $\Delta 6 = 0.724 = 347.062$ $\Delta 7 = 1.308 = 346.478$

a

Bottom Elevations:

RG1 = 315.826

Reading = 2.166

H.I. = 347.992

 $\Delta 1 = 1.100 = 346.892$ $\Delta 2 = 1.668 = 346.324$ $\Delta 3 = 1.121 = 346.871$ $\Delta 4 = 1.747 = 346.245$ $\Delta 5 = 1.329 = 346.663$ $\Delta 6 = 1.234 = 346.758$ $\Delta 7 = 1.799 = 346.193$ **DEFINITION/DESCRIPTION of LOCUS (explain why you changed locus numbers):**Today's date: 29 June 2005 Locus above: B3501

Locus parameters: N boundary = B3400; S boundary = arbit. line approx 4.30m from N; E bound = approx 1.50m from modern terrace wall; W bound = line of old terrace wall; for exact measurements, see plan

Verbal description:

The matrix is fairly loose with much light brown dirt, few nodules ~~just~~ bigger than cobbles and some pottery. This soil does have some vegetation remains since it is still fairly close to the surface

Locus Interpretative Comments (What do you think this is? DATE your comments, continue on additional pages if necessary):

29 June 2005 This locus is the layer of soil underneath the topsoil and appears to be the slope wash above some wall tumble over after the removal of the topsoil there were a few sizable stones visible;

Year 2005

Trench/Locus

B3502

Excavator

[illegible]

OBJECTS

[illegible]

ADDITIONAL COLLECTED MATERIAL

[illegible]

Year 2005 Trench/Locus B3502 Excavator DFM

DESCRIPTION of PROGRESS of EXCAVATION [date each entry and identify associated pottery pair(s)]:

29 June 2005

Once we removed the top layer of soil (B3501), we changed locus since the next pass through the trench was no longer topsoil. The pottery pair associated w/ this pass is B3502.1. There was a fair bit of soil so we ~~excavated (?) the soil~~ used the korm in the W half, among the soil turned up soil we found a possible stone tool. This is obj. #1 of B3502.T. The pass started in the W and it moved Eward toward the E boundary. We only managed to get approx. 1 m into the pass before the day ended,

Obj. #1 - from B3502.1 was de-objectified
↳ was not a stone tool

Year 2005 Trench/Locus B3502 Excavator DFM

DESCRIPTION of PROGRESS of EXCAVATION [date each entry and identify associated pottery pail(s)]:

30 June 2005

This morning we continued the pass Eward through the trench that had been started yesterday (B3502.1) and so the pottery pail associated w/ this pass is B3502.2. There was ^{more} ~~much~~ stone as we worked up the slope towards the baulk and so we used shadleri instead of the leasma. Approximately 2.25 m from the W boundary there appeared a line of large rocks and this linear accumulation appears to be a fairly substantial wall that separates the trench into 2 spaces. As we progressed into the E half, there was a large cluster of stones in the center of the space ~~with~~ and w/in the stones were mixed burnt fragments of pottery. We collected some of the delicate pottery fragments and sent them in as a bag of "other Material" and labelled it 'hearth material'; it's possible this particular feature is a collapsed ~~out~~ ^{out}. Also in this eastern half were found our 2 objects for the day -

Obj. #1 was a ~~of~~ possible stone tool fragment; this is Obj. #1 and it was located 36 cm from E baulk + 1.80 m from N baulk (includes the 50 cm baulk L/w B3500 + 3400). Elevations were taken:

RG1 = 345.826

Reading = 2.225

H.I = 348.051

Elevat. # 1.169 = ~~342.432~~ 346.882

The other object was a possible worked shell and it is Obj. #2, located 7 cm from E baulk + 82 from Shawl. Elevations were taken:

RG1 = 345.826

Reading = 2.218

H.I = 348.044

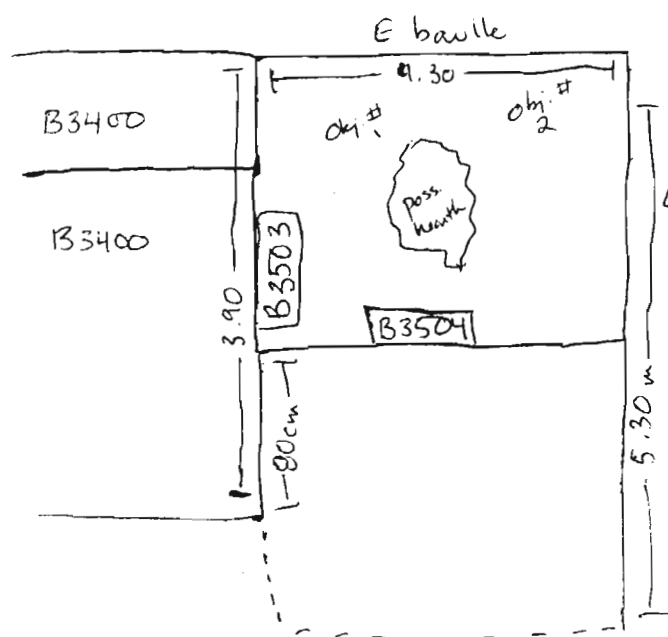
Elevation = 346.888

Year 2005 Trench/Locus B3502 Excavator DFM

DESCRIPTION of PROGRESS of EXCAVATION [date each entry and identify associated pottery pair(s)]:

30 June 2005 (cont. from pg 4)

On the NE ~~corner~~ ^E section of the trench along the ^E baulk the soil becomes fairly red and full of stones that look like pre-historic material. We cleared the 50 cm baulk betw B3400/B3500 after we finished the pass through the trench and it appears that ~~this~~ ^{E/W} the soil is above the ^{E/W} crosswall betw the two trenches. After removing this locus it is clear we have a large A/S ^(B3504) crosswall cutting the space into 2 sections and an wall appears to connect to the ^(B3503) E/W crosswall that separates B3400/B3500 and forms a dogleg corner. So far we have only revealed the top course of B3504 and it is



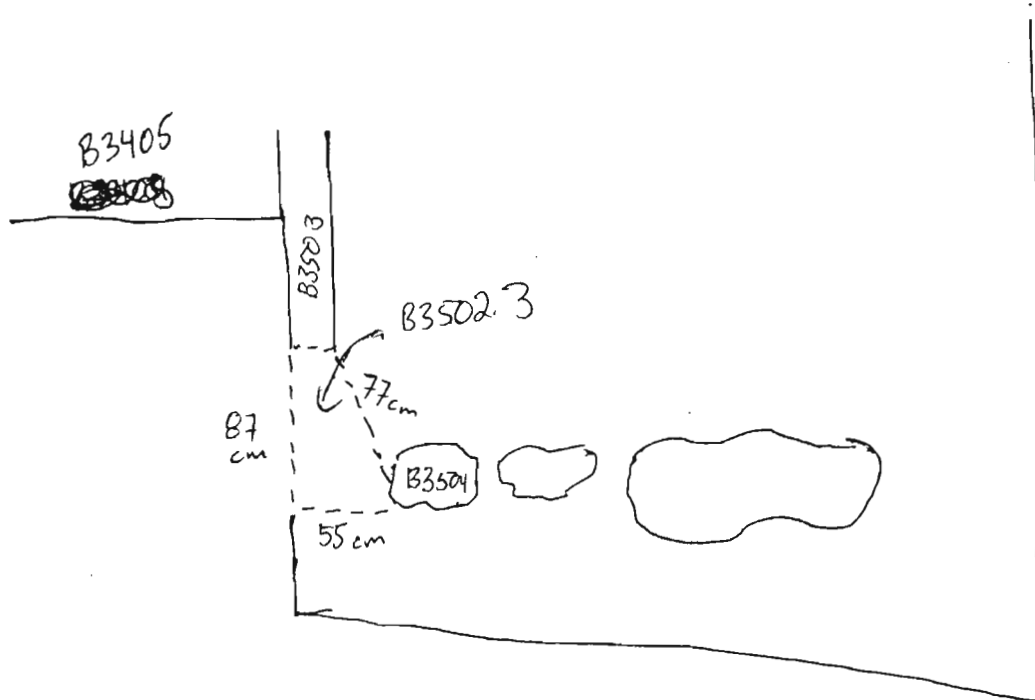
Unclear how well preserved B3503 in the NE upper section

Year 2005 Trench/Locus B3502 Excavator DPM

DESCRIPTION of PROGRESS of EXCAVATION [date each entry and identify associated pottery pair(s)]:

01 July 2005

This morning we took a small pass along the N boundary, along B3503 in order to try to find the relationship between B3503 and B3504. The pottery pair associated w/ this pass is B3502.3. The soil was removed hoping to find some connection or corner between the two walls, but it still remains unclear - there ~~was~~ ^{was} no joining of the 2 walls as thought.



Final elevations for B3502 were taken - see locus sheet for measurements

Year 2005 Trench/Locus B3502 Excavator DFM

DESCRIPTION of PROGRESS of EXCAVATION [date each entry and identify associated pottery pair(s)]:

04 July 2005

This morning we collected the pottery sherds and bones that were loose w/in and around the possible collapsed 'hearth' oven and the pottery pair associated w/ this is B3502.4.

To better define this possible "feature" we gave it its own locus # B3506 and began removing some of the stones + dirt to determine whether it is an actual

feature.

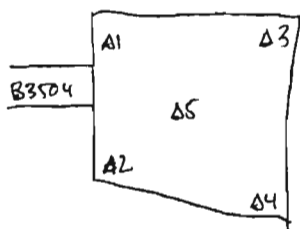
As stated before, this 'hearth' feature is on the upper portion of the trench in the E half and was revealed during the removal of B3502.

Year 2005 Trench/Locus B3502 Excavator DFM

DESCRIPTION of PROGRESS of EXCAVATION [date each entry and identify associated pottery find(s)]:

06 July 2005

After removing the topsoil, ^{in the S extension} we took a pass through the layer of soil under the topsoil - loesswash and vegetation debris. The pottery find associated with this pass is B3502.5. Hopefully this pass will expose the beginning of the wall tumble in front of B3504 and define the two edges of the wall, B3504 - which appears to be continuing. This pass did unveil a continuation of a wall, but it does appear to be at a different angle, and built of smaller stones. Plus, a large gap exists betw. the Smost stone of B3504 + the first stone of this wall. The E edge of the wall is a bit blurred because there is a line of stones leaning up against the wall. The S end of the wall disappears approximately 1.0m from the S baulk and so we are hoping we will find lower courses of the wall as we go deeper. As the pass continued E of the "wall" there was a fair bit of stones tightly compacted together w/ some soil, almost looks a bit like packing material but further investigation is needed. ~~Once we finished~~ Elevations were taken after we removed the topsoil (B3501.4) and before taking the pass B3502.5



$$RG1 = 2,363 (348.189)$$

$$\Delta 1 = 1.347 = 346.842$$

$$\Delta 2 = 1.822 = 346.367$$

$$\Delta 3 = 1.291 = 346.898$$

$$\Delta 4 = 1.593 = 346.596$$

$$\Delta 5 = 1.600 = 346.589$$

Year 2005 Trench/Locus B3502 Excavator DFM

DESCRIPTION of PROGRESS of EXCAVATION [date each entry and identify associated pottery pair(s)]:

06 July 2005

After we finished the pass B3502.5, we took elevations which

represent the bottom of ^{locus} B3502 in the S extension + the top of ^{locus} B3505 in the

S extension since locus B3505 is associated w/ the soil wall
wall B3504 and we will be concentrating our investigation in this
western part of the trench.

$$RG1 = 2.448 \text{ (348.274)}$$

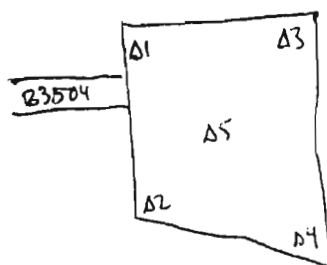
$$\Delta 1 = 1.473 = 346.801$$

$$\Delta 2 = 2.042 = 346.232$$

$$\Delta 3 = 1.430 = 346.844$$

$$\Delta 4 = 1.780 = 346.494$$

$$\Delta 5 = 1.750 = 346.524$$



Year 2005 Trench/Locus B3502 Excavator DFM

DESCRIPTION of PROGRESS of EXCAVATION [date each entry and identify associated pottery find(s)]:

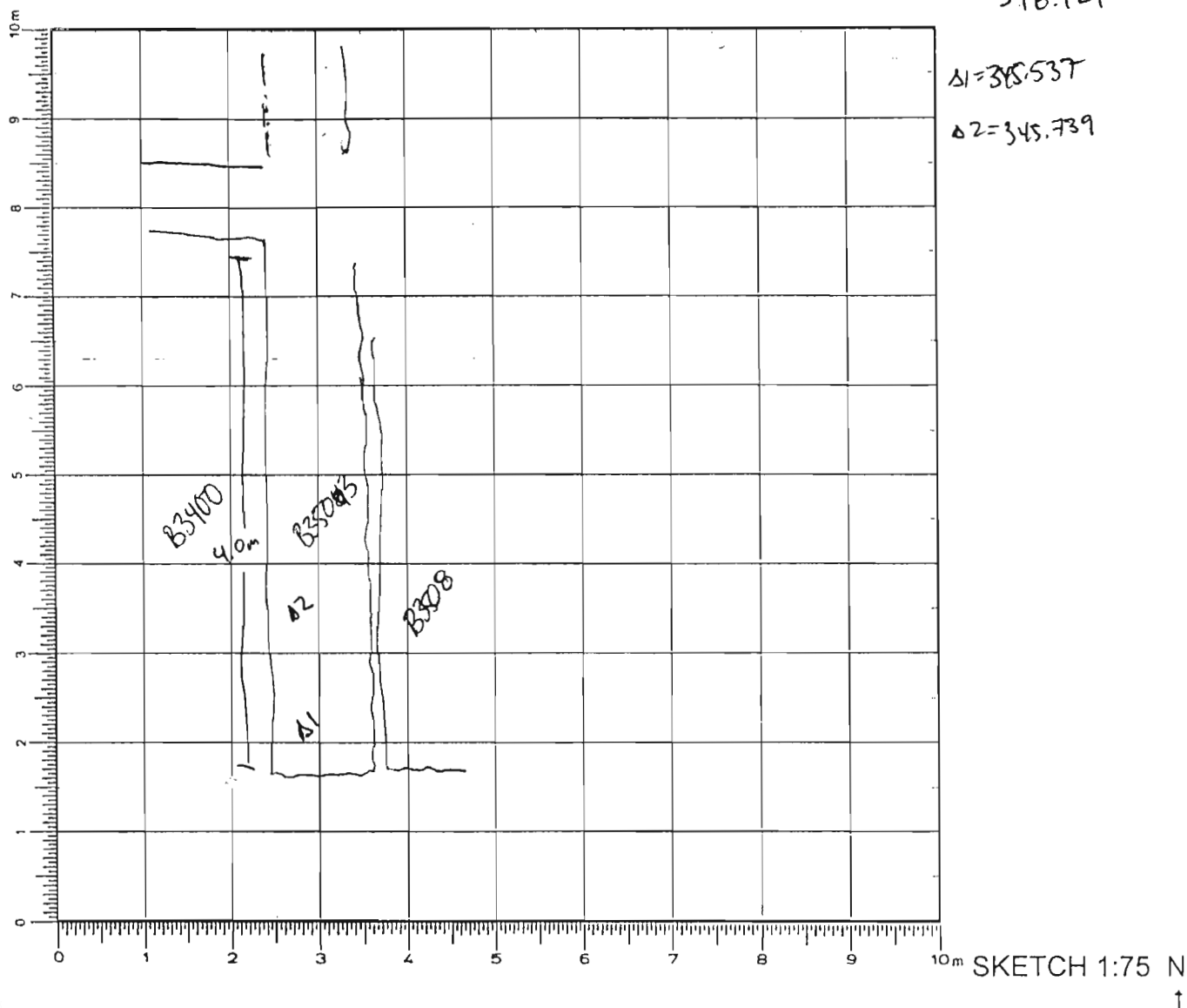
07 July 2005

Before any further excavation ^{tool} ~~was~~ ^{to be} place in the S extension of B3500, we decided to take a pass in the W half of the extension, removing as much of the modern terrace fill + soil that was set up for the modern terrace wall that cut had out across the terrace + had been taken down so excavation could take place. The pottery find associated w/ this pass is B3502 6. The soil is extremely loose, full of vegetation matter and cobbles.

Year 2005 Trench/Locus B3503 Excavator DFM
Wall (E/W)

ElevationsBenchmark used: PL1

Reading on

Benchmark: 2.298H.I.: 348.124

DEFINITION/DESCRIPTION of LOCUS (explain why you changed locus numbers):

Today's date: 30 June 2005

Locus above: ~~B3500~~ B3502

Locus parameters:

Verbal description: Approx. 50cm wide, and 4.0m long (E/W) from S end to corner of B3503 + B3502
E/W Wall running parallel to B3508 - higher preserved in E end - at least 3 courses
high - made of medium to large stones - some appear worked; packed together w/ soil;
~~at least~~ width = 2 stones

Locus Interpretative Comments (What do you think this is? DATE your comments, continue on additional pages if necessary):

B3503 - E/W wall joining up w/ B3405 - serves as
S. wall of room in B3400

Year

Trench/Locus

Excavator

[illegible]

OBJECTS

[illegible]

ADDITIONAL COLLECTED MATERIAL

[illegible]

AZORIA Project

p. ____

Year 2005 Trench/Locus B3503 Excavator DFM

DESCRIPTION of PROGRESS of EXCAVATION [date each entry and identify associated pottery find(s)]:

11 July 2005

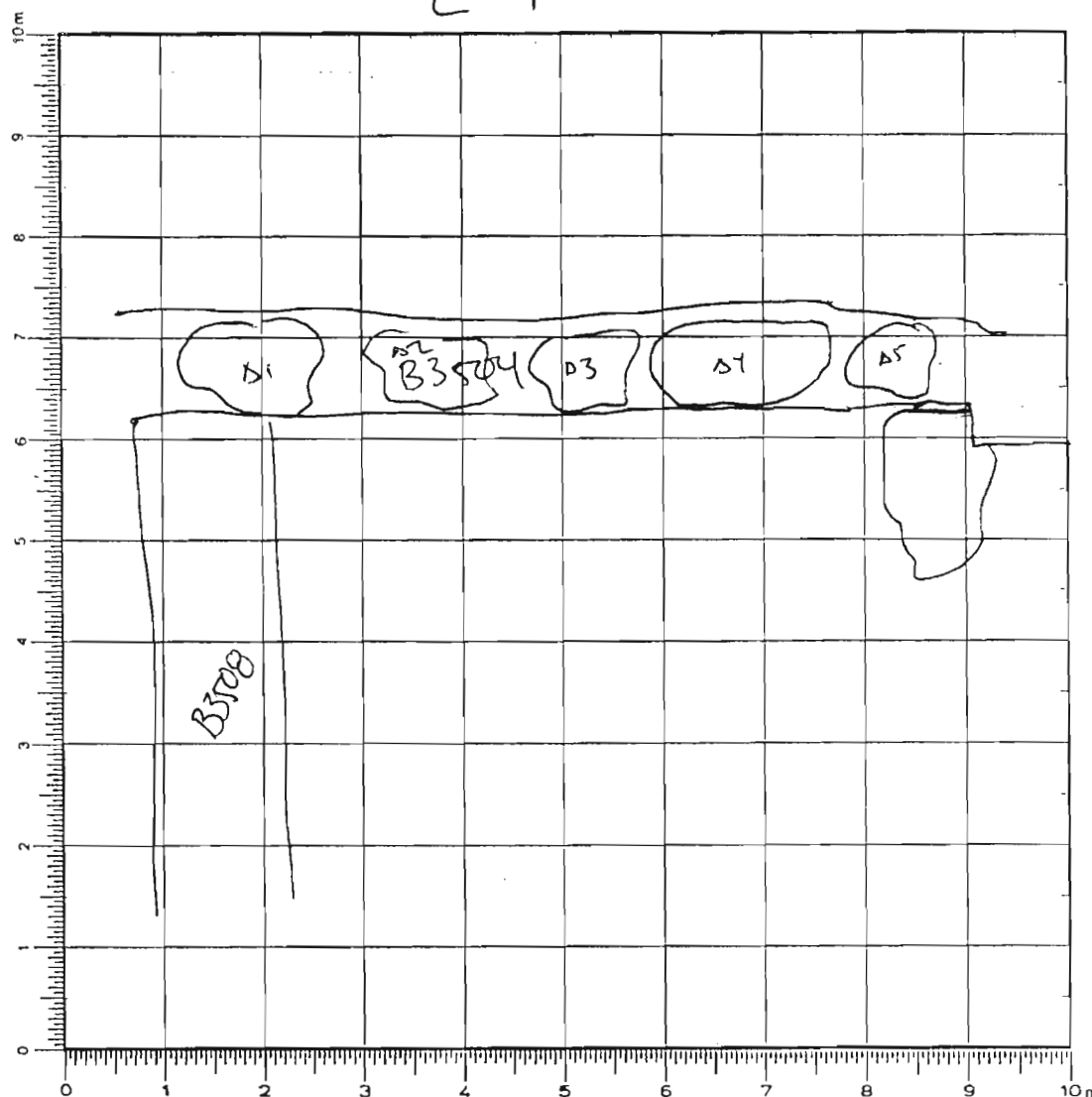
This morning, DCH spent some time exploring B3503 and tried to discern between possible rubble, a doorway, or intentional blocking of a doorway - if there was one. The pottery find associated w/ this is B3503.1

Year 2005 Trench/Locus B3504 Excavator DFM
wall (N/S)

Elevations

Benchmark used: RG1 (345.826)
 Reading on
 Benchmark: 2.166
 H.I.: 347.992

E-N



$\Delta 1 = 1.430 = 346.562$
 $\Delta 2 = 1.365 = 346.627$
 $\Delta 3 = 1.333 = 346.659$
 $\Delta 4 = 1.368 = 346.624$
 $\Delta 5 = 1.178 = 346.813$

SKETCH 1:75 N

↑

DEFINITION/DESCRIPTION of LOCUS (explain why you changed locus numbers):

Today's date: 30 June 2005 Locus above: B3502

Locus parameters: Measures approx. 5.60m - then goes to W - measures 1.35m

Verbal description: Large N/S spine wall, serving as E boundary to interior space of B3500,
composed of large → to extremely massive rocks/boulder - picked w/ dirt,
preserved at least three corners - only excavated Wedge/fac

Locus Interpretative Comments (What do you think this is? DATE your comments, continue on additional pages if necessary):

p.2

p.2

p.2

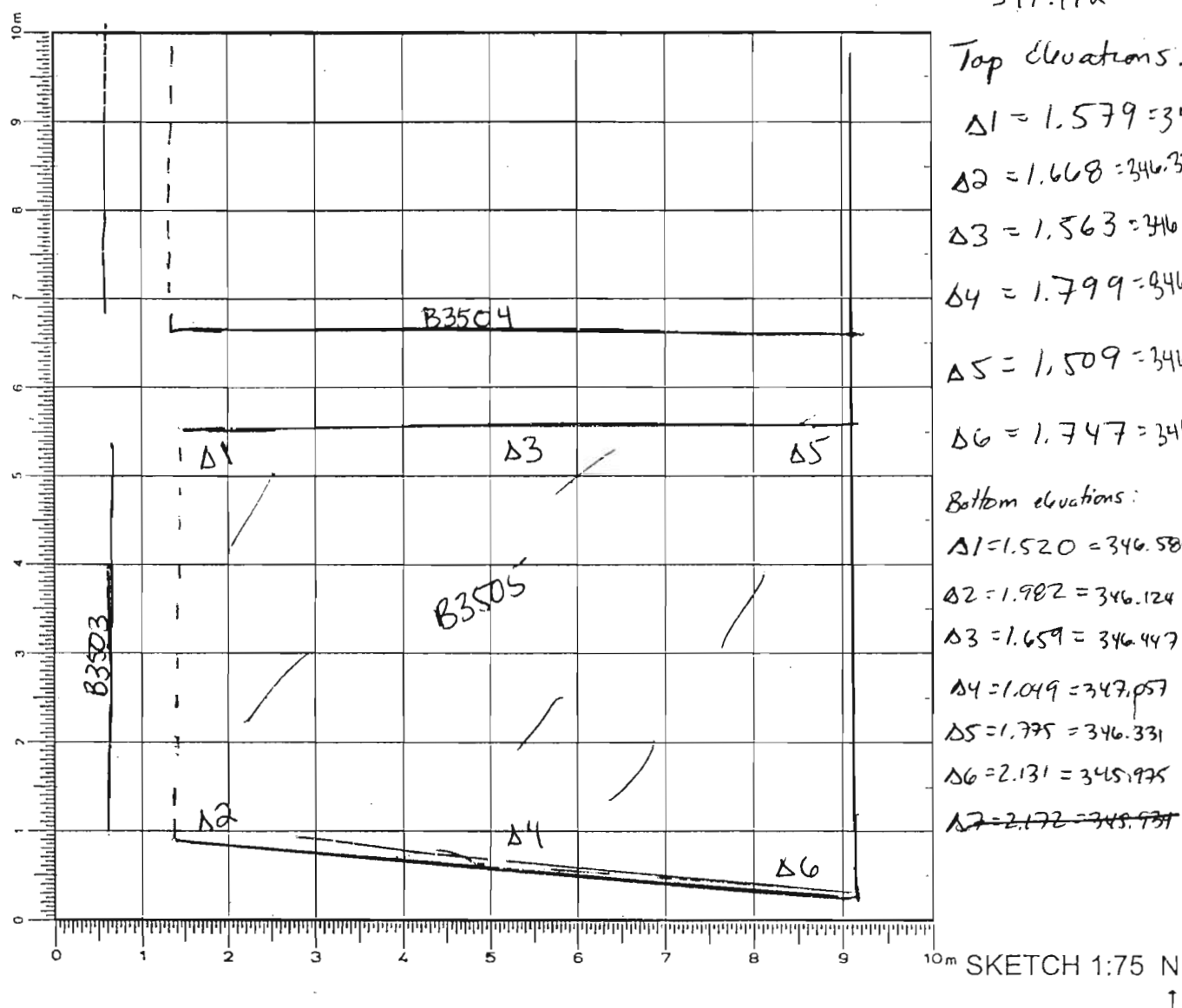
p.2

p.2

p.2

Year 2005 Trench/Locus B3505 Excavator DFMElevations

Benchmark used: RG1
 Reading on (345.826)
 Benchmark: 2.166
 H.I.: 347.992



DEFINITION/DESCRIPTION of LOCUS (explain why you changed locus numbers):

Today's date: 01 July 2005 Locus above: B3502

Locus parameters: E boundary = B3504; N boundary = B3503; S boundary = S bank line (before extension in B3505 July); W = W bank of trench

Verbal description:

This locus is the soil W of B3504 and the matrix of the soil is fairly loose & gravelly, w/ brown dirt, vegetation debris and fair amount of stones.

Locus Interpretative Comments (What do you think this is? DATE your comments, continue on additional pages if necessary):

01 July 2005 - With the definition of wall B3504, it was decided to just excavate to the W of the wall and so we changed loci to B3505 to differentiate it from the

AZORIA Project

p.2

Year 2005 Trench/Locus B3505 Excavator DFM
 * there is no B3505.3 pair for this locus

Locus/Pottery Pail Number	Weight of Sherds	Number of Sherds	Chronology & Comments
B3505.1	2.850	147	Hell, LA, O, LM III C
B3505.2	.775 kg	25	Hell, A, O, LM III C
B3505.3			
B3505.4	.675 kg	64	Hell, LA, O
B3505.5	1.875 kg	155	Hell, LA
B3505.6	2.60 kg	76	Hell, LA
B3505.7	1.60 kg	34	A, LM III C
B3505.8	1.57 kg	114	'Modern', Early 5 th C, LA, A, LM III C
B3505.9	1.75 kg	54	LA, A, LM III C
B3505.10	1.66 kg	71	LA, O, LM III C

OBJECTS

Object Number	Associated Pottery-Pail	Identification (material/form)	Location	Elevation	Catalogue Number
#1	B3505.1	spindle wheel (?)	— handle of loasma w sord web		
#2	B3505.1	loom weight	— " " " " " " " "		
#1	B3505.6	stone tool	70cm from W handle 45cm from N handle	345.485	
#2	B3505.6	stone tool	45cm from W handle 1.57m from N handle	345.436	
#1	B3505.9	corner of quern?	basma handle - W half		

ADDITIONAL COLLECTED MATERIAL

Locus/Pottery Pail Number	Bones	Shell	Carbon	Pumice	Soil Sample	Other (specify)
B3505.1	X					
B3505.2						
B3505.3						
B3505.4	X					
B3505.5	X					
B3505.6	X					
B3505.7	X	X				
B3505.8	X					
B3505.9	X				X	
B3505.10	X					

N

Year 2005 Trench/Locus B3505 Excavator DFM

DESCRIPTION of PROGRESS of EXCAVATION [date each entry and identify associated pottery pair(s)]:

01 July 2005 (cont from pg. 1)

Soil that is to the E of wall B3504.
As of now, excavation will concentrate on
the W side of B3504. Elevations were taken
before we started digging - see locus sheet

Year 2005 Trench/Locus B3505 Excavator DFM

DESCRIPTION of PROGRESS of EXCAVATION [date each entry and identify associated pottery pair(s)]:

U

~~001~~

01 July 2005

After we removed the topsoil in the Wward expansion we began a pass from the W to the E trying to locate the wall tumble. The pottery pair associated with the first pass is B3505.1. The soil and loose stone were ~~removed~~ removed and the area was swept + elevation taken before another pass was taken. Next pass, the pottery pair is B3505.2. The wall tumble slopes up as it banks up against the W side of B3504 and it slopes fairly deep in the W end of trench. ~~Another pass was started~~

~~B3505.3 at the end of the day and will be continued~~

~~000~~ Two objects ^{were} found associated w/

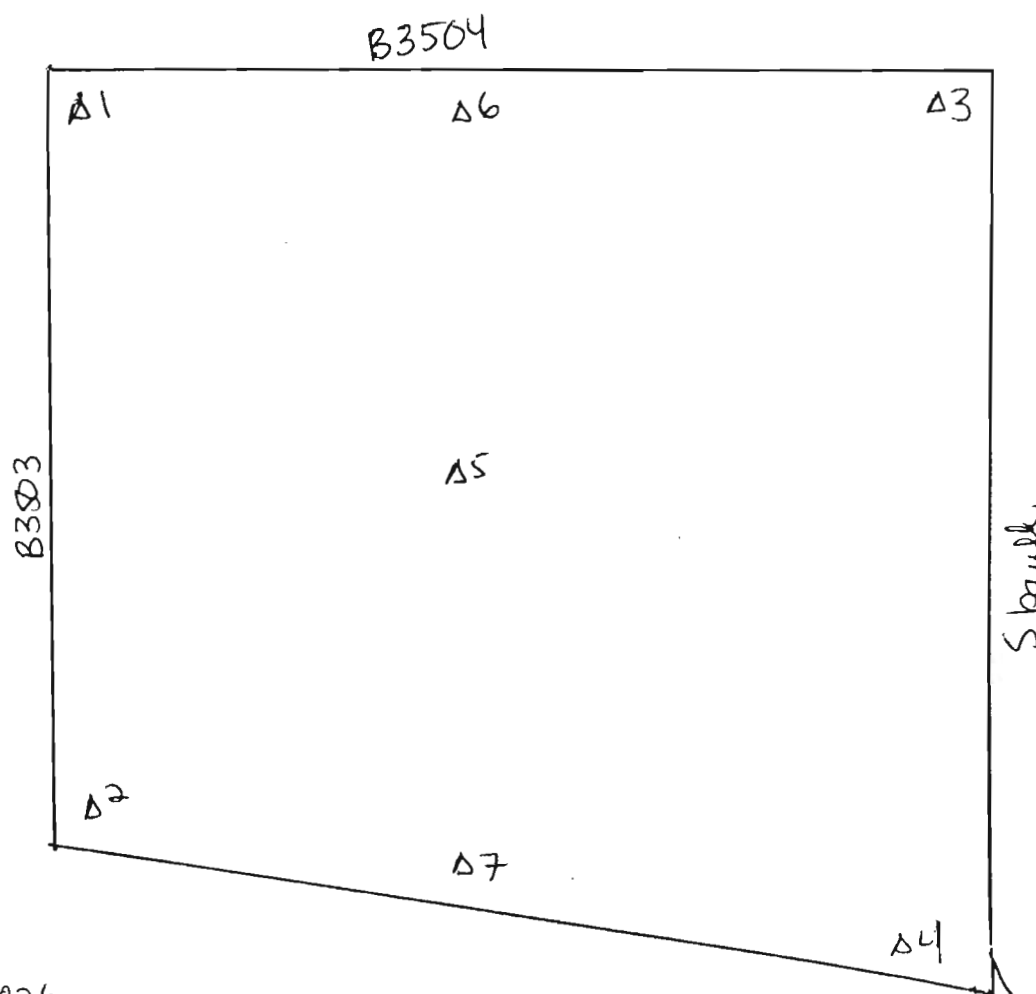
B3505.4 ~~there~~ were a loom weight and a spindle whorl head? and they were found w/in the kaomaded soil that no elevations were taken. Yet both were found in the W half - toward the W boundary line

Year 2005 Trench/Locus B3505 Excavator DFM

DESCRIPTION of PROGRESS of EXCAVATION [date each entry and identify associated pottery pail(s)]:

01 July 2005

After B3505.1 was completed and before we started B3505.2, elevations were taken -



$$261 = 345.826$$

$$\text{reading} = 2.162$$

$$H.I. = 347.988$$

$$\Delta 1 = 1.761 = 346.227$$

$$\Delta 7 = 2.121 = 345.867$$

$$\Delta 2 = 2.095 = 345.893$$

$$\Delta 3 = 1.569 = 346.419$$

$$\Delta 4 = 1.986 = 346.002$$

$$\Delta 5 = 1.972 = 346.016$$

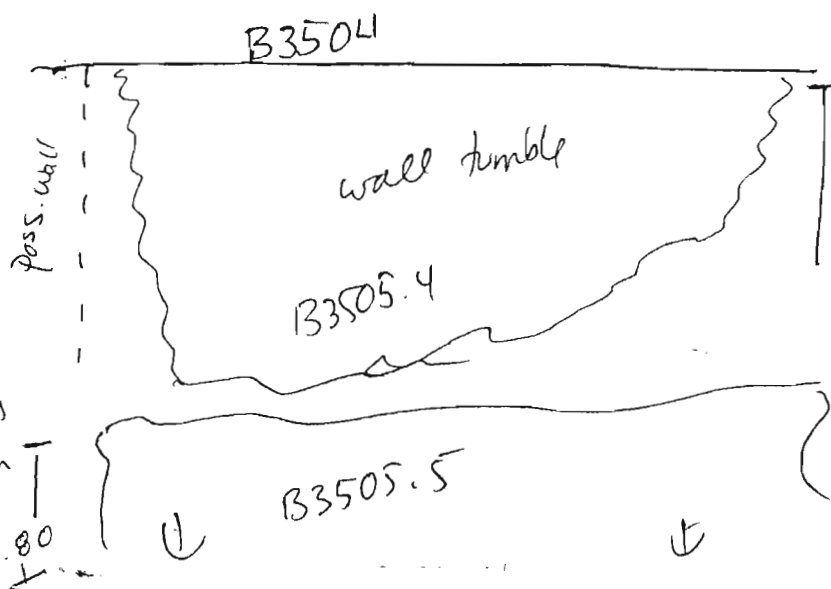
$$\Delta 6 = 1.550 = 346.438$$

Year 2005 Trench/Locus B3505 Excavator DFM

DESCRIPTION of PROGRESS of EXCAVATION [date each entry and identify associated pottery pail(s)]:

04 July 2005

This morning we continued the pass revealing the cluster of wall tumble W of B3504 and occupies most of the W half of the trench. The pass started from the W and moved eastward toward the wall B3504. The pottery pail associated w/ this pass B3505.4. * There is no pottery pail B3505.3 - I skipped a number in the sequence. So the pass continued from the W toward the east revealing more wall tumble. The next pass of this locus is mostly through the W end of the trench trying to find the wall tumble as it dips sharply down on the west end, so the level of wall tumble is a lot lower than at the top of the B3504. The pass is associated w/ B3505.5.



Year 2005 Trench/Locus B3505 Excavator DFM

DESCRIPTION of PROGRESS of EXCAVATION [date each entry and identify associated pottery find(s)]:

04 July 2005 (cont. from pg. ~~9~~)

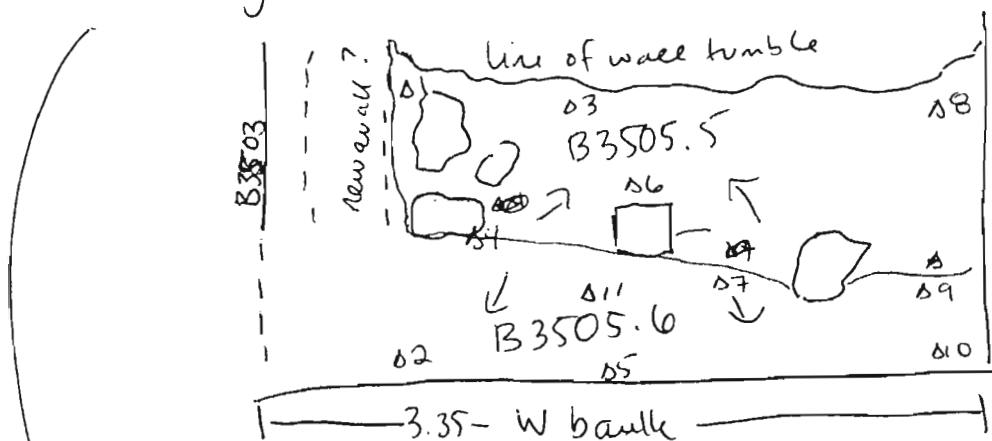
The pass, like the others, started at the W end and worked E toward the sloping mound of wall tumble. As we worked Eward along the N edge of the trench we uncovered a possible E/W cross wall that actually appears to possibly continue to B3504. The whole N edge of B3500 is rather under and its association w/ B3400 because it appears that they have a E/W cross wall at their S trench boundary so it almost looks like a double wall - two walls abutting each other. Further exploration is needed. Also in this pass, ~~in~~ in addition to the E/W cross wall (?), a linear accumulation of stones appeared along the W end, approx. 90cm from the W edge. They are rather flat and one looks worked + rather square. There are ~~two~~ about three stones in a row, but there is much space between them. And in the W corner of the possible E/W wall and the N/S linear accumulation, there is a rather large flat plateau, along w/ a smaller one. The wall tumble did not reach all the way to the W end of the trench and it was mostly dirt covering the N/S linear lines of stones and the plateaus. These plateaus could be at the floor level

Year 2005 Trench/Locus B3505 Excavator DFM

DESCRIPTION of PROGRESS of EXCAVATION [date each entry and identify associated pottery pair(s)]:

04 July 2005 (cont from pg. 6)

... for this room, but it is still unclear. After we finished w/ B3505.5, a photograph was taken of the wall tumble that was revealed by the removal of B3505. It was decided to take a pan in the W end of the trench to the W of the line of stones to see if it actually is the W wall to the room; also part of the pan was in the ~~area~~ area N of the line of stones to see if we could clear up some of the masonry surrounding B3503 and its W end - whether it continued to the W bank or was there some sort of doorway or corner connecting these 2 ~~possible~~ walls.



End elevat @ B3505.5

RG1 = 345.826
 $\Delta 1 = 2.4041 = 345.701$ reading = 2.27
 $\Delta 3 = 2.445 = 345.660$
 $\Delta 86 = 2.461 = 345.644$ HI = 348.1
 $\Delta 8 = 2.476 = 345.629$

Top elevat of B3505.6

$\Delta 2 = 2.522 = 345.583$
 $\Delta 4 = 2.500 = 345.605$
 $\Delta 7 = 2.655 = 345.450$
 $\Delta 9 = 2.687 = 345.418$
 $\Delta 10 = 2.864 = 345.241$
 $\Delta 11 = 2.677 = 345.428$

The pottery pair associated w/ this pan is

B3505.6.

Year 2005 Trench/Locus B3505 Excavator DFM

DESCRIPTION of PROGRESS of EXCAVATION [date each entry and identify associated pottery find(s)]:

04 July 2005 (cont from pg.)

.... During the pass B3505.6 there were 2 stone tools found and we were able to take elevations in both. Obj. #1 was found 70cm from ^W bank and 1.50m from N bank; elevation = RGI reading 2.280
 Obj. #1 = 2.621
 $\Delta = 345.485$

And soon after, in close proximity to Obj. #1 another stone tool was found - Obj. #2, found 45cm from ^W bank and 1.57m from N bank;
 elevat RGI = 2.280
 Obj. #2 = 2.670
 $\Delta = 345.436$

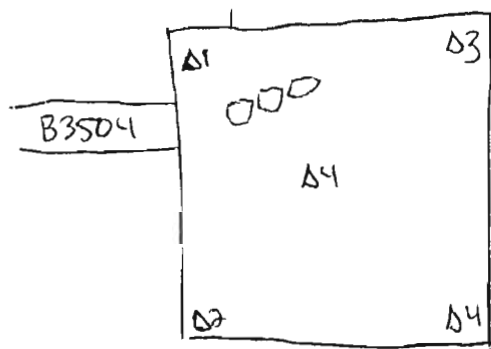
Year 2005 Trench/Locus ~~B3504~~ B3505 Excavator DFM

DESCRIPTION of PROGRESS of EXCAVATION [date each entry and identify associated pottery find(s)]:

06 July 2005

This afternoon, after we better defined the wall that is in the ~~E~~ upper east part of the S extension of B3500, and since it is probably the cont. of B3504, we decided to take a pass on the W side of ~~B35~~ the wall ~~and~~ to ^{+expose} uncover the wall tumble. The pottery find associated w/ this pass is B3505.7. The pass started in the W and continued Eward. We didn't get too far by the end of the day and so it will be continued tomorrow

Elevations were taken - bottom elevat. for B3502.5
+ top elevat for B3505.7



RG1 = 2.448
H.I. = 348.274
Δ1 = 1.473 = 346.801
Δ2 = 2.042 = 346.232
Δ3 = 1.430 = 346.844
Δ4 = 1.780 = 346.494
Δ5 = 1.750 = 346.524

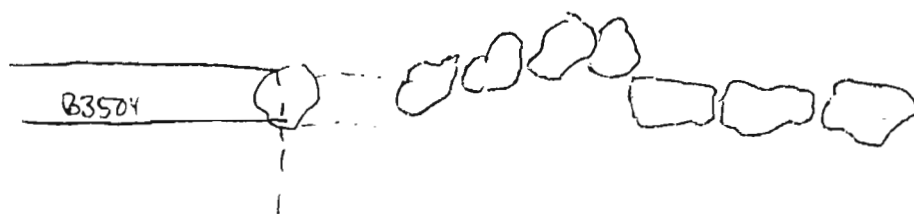
Year 2005 Trench/Locus B3505 Excavator DFM

DESCRIPTION of PROGRESS of EXCAVATION [date each entry and identify associated pottery pail(s)]:

07 July 2005

This morning we continued the pass started yesterday afternoon (B3505.7) and so the pottery pail associated w/ this pass is B3505.8. The pass cont. E ward toward the wall and there is still a fair ~~bit~~ bit of soil in this pass and only a few stones so far have appeared as possible wall tumble.

After the pass, it became clear that the line of wall shifted again in the S half and in the gap of the wall we uncovered the ^{top of the} next course in the space. We decided to



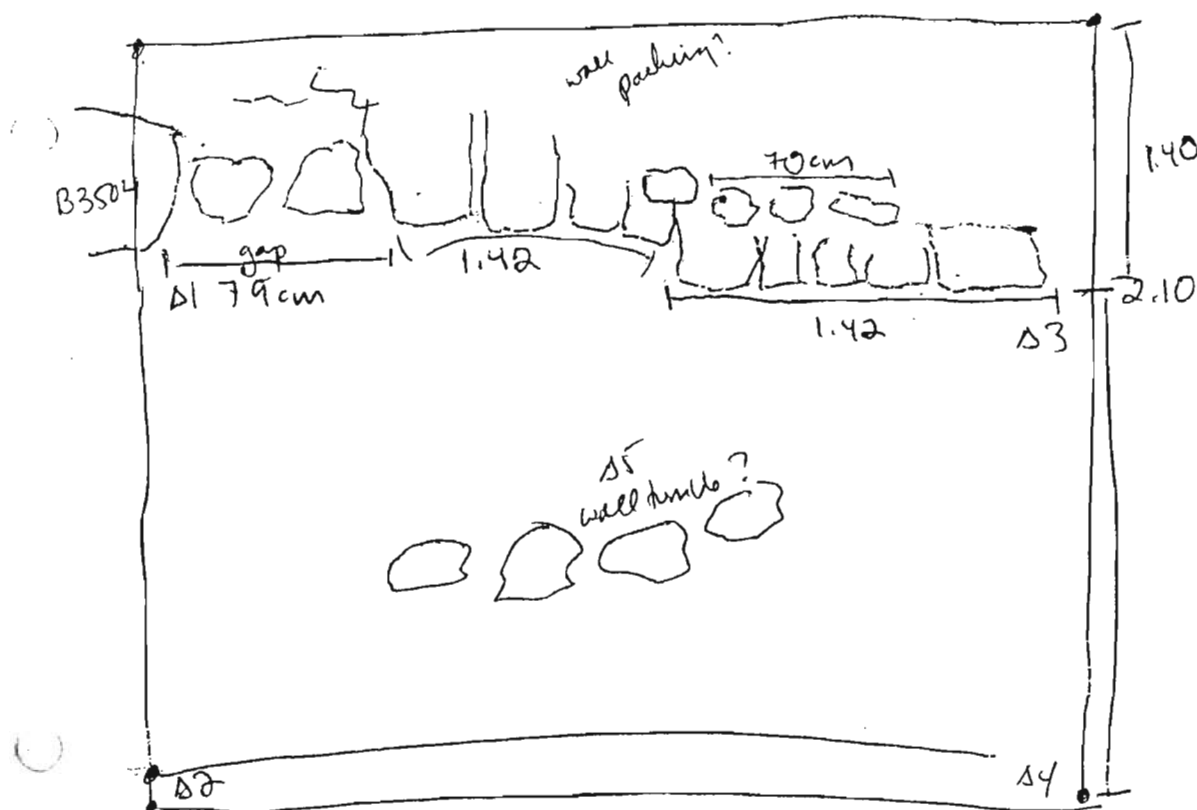
take another pass, pottery pail B3505.9, in hopes to remove the soil and find the wall tumble and pass. reveal more courses of the wall. The soil in the pass is still fairly loose w/ few stones seeming to be part of the wall tumble. In the kasma-ed jumble there was a possible stone tool fragment - a corner of a quern? And so that was given object #1 - w/ no elevations ^{present} or location but it was from what?

Year 2005 Trench/Locus B3505 Excavator DFM

DESCRIPTION of PROGRESS of EXCAVATION [date each entry and identify associated pottery pail(s)]:

07 July 2005 (cont from pg. -)

Sketch of trench - after B3505.8



After we finished pass B3505.9, and before starting the next pass in this locus, B3505.10, we took elevations.

RG 1 = 2.395
HI = 348.221
Δ1 = 1.802 = 346.419
Δ2 = 2.163 = 346.058
Δ3 = 1.770 = 346.451
Δ4 = 1.850 = 346.371
Δ5 = 1.900 = 346.221

We took another pass through trying to find the wall tumble and there really is an ~~apparent~~ apparent lack of it as compared to the level of wall tumble in the original trench. There are a few stones on front of the continuation of B3504, but there is mostly loose dirt & pockets of cobbles of ceiling clay. There is a line of

Year 2005 Trench/Locus B3505 Excavator DFM

DESCRIPTION of PROGRESS of EXCAVATION [date each entry and identify associated pottery find(s)]:

07 July 2005 (cont. from pg. ____)

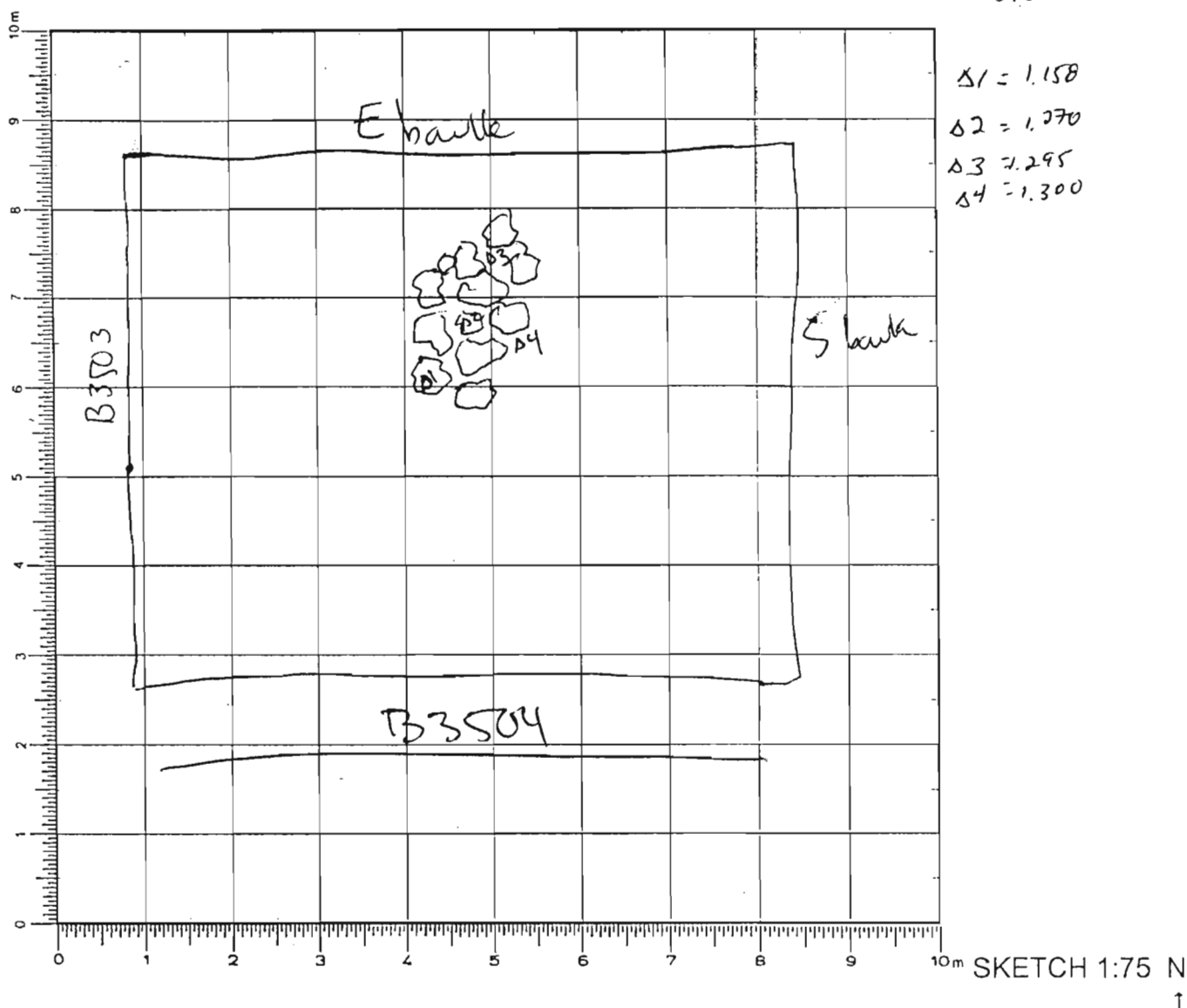
approximately 5 stones that are diagonally placed in the W end - this was once thought to be part of the wall tumble, but it probably was at one point but more likely it is a set of stones placed as backing for the modern terrace wall because that wall has served as a sort of dividing line between the cobblestone ~~and~~ paving for the modern terrace wall ~~and~~ (to the W) and on the E side the dark brownish soil mixed w/ clayey material related to the room. The lack of wall tumble could be explained by the fact that when they built the modern terrace wall, they clearly had cut into this space & they could have used the wall tumble stones in the terrace wall. After B3505.10 was completed, the area was swept for photos.

Year 2005 Trench/Locus B3506 Excavator DFMElevationsBenchmark used: RG1

Reading on

Benchmark: 2.279H.I.: 348.105

← N



DEFINITION/DESCRIPTION of LOCUS (explain why you changed locus numbers):

Today's date: 04 July 2005 Locus above: B3502

Locus parameters:

Verbal description: Cluster of 20 chunks of bedrock, calcined exposed to intense heat and tumble, w/ pieces of pottery and bone mixed in

Locus Interpretative Comments (What do you think this is? DATE your comments, continue on additional pages if necessary):

Possible collapsed 'hearth/oven' feature in E half of trench, just E of B3504. In order to determine whether or not this is an actual feature it was decided to give it its own locus and remove some of the stones and pottery to see

Excavator DFM

[illegible]

OBJECTS

[illegible]

ADDITIONAL COLLECTED MATERIAL

[illegible]

Year 2005 Trench/Locus B3506 Excavator DFM

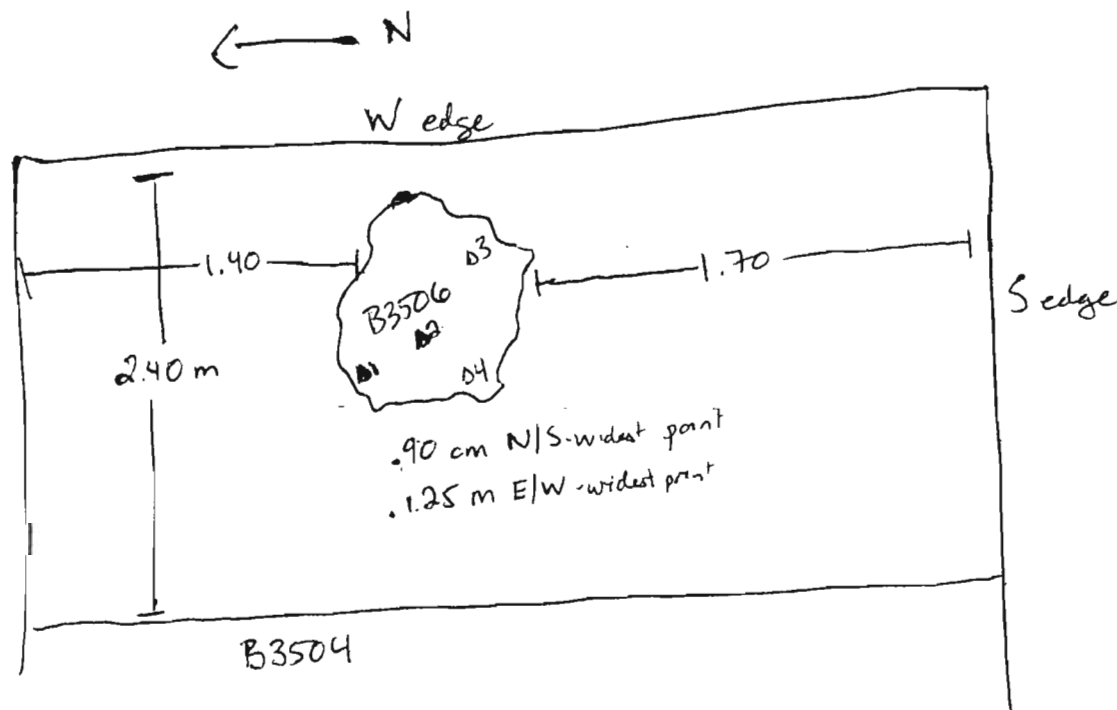
DESCRIPTION of PROGRESS of EXCAVATION [date each entry and identify associated pottery pail(s)]:

04 July 2005 (cont from pg. 1)

... if any clear answer could be made about this possible feature.

The pottery pail associated w/ this is B3506-1. After much work done by Rachael ~~it~~ it was determined not to be a feature since the large chunks of red clay material, once thought to be pisé, was actually just burnt pottery fragments.

And so, elevations were taken, as well as the dimensions of this once 'possible' feature.



RG1 = 345.820
reading = 2.279 H.I. = 348.105

$\Delta 1 = 1.158 = 346.947$

$\Delta 2 = 1.270 = 346.835$

$\Delta 3 = 1.295 = 346.81$

$\Delta 4 = 1.300 = 346.805$

Year 2005 Trench/Locus B3507 Excavator DFM

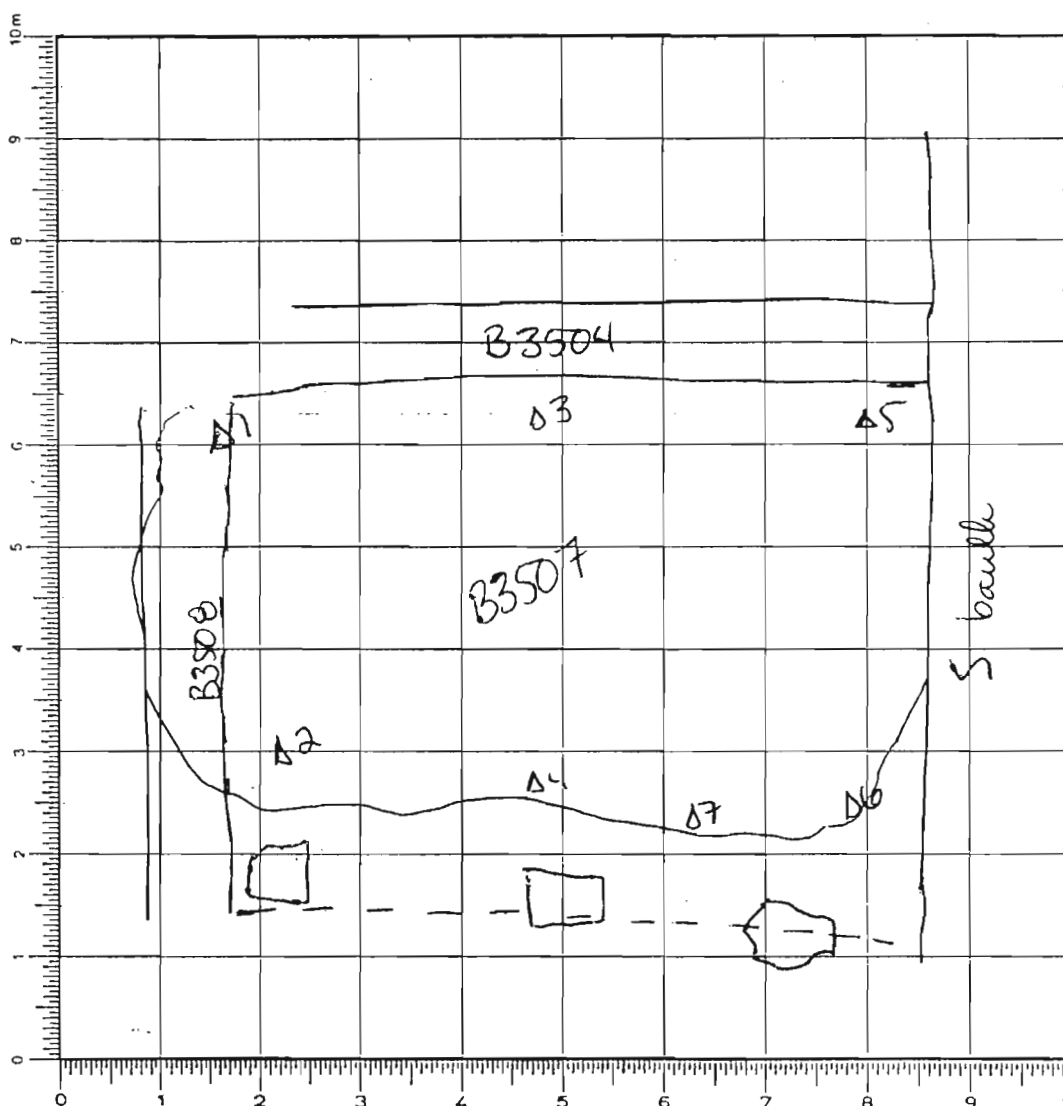
Elevations

Benchmark used: Rgt1 (3458.20)

Reading on

Benchmark: 2.280H.I.: 348.106

Top Elevations

 $\Delta 1 = 1.520 = 346.586$ $\Delta 2 = 1.982 = 346.124$ $\Delta 3 = 1.659 = 346.447$ $\Delta 4 = 1.049 = 347.057$ $\Delta 5 = 1.775 = 346.331$ $\Delta 6 = 2.131 = 345.975$ $\Delta 7 = 2.172 = 345.934$ 

Bot Elev - 10 m
 $\Delta 1 = 2.450 = 345.656$
 $\Delta 2 = 2.410 = 345.696$
 $\Delta 3 = 2.580 = 345.526$
 $\Delta 4 = 2.150 = 345.956$
 $\Delta 5 = 2.500 = 345.606$
 $\Delta 6 = 2.291 = 345.846$

Bot Elev. CH I = 348.097
 $\Delta 1 = 2.306 = 345.791$
 $\Delta 2 = 2.410 = 345.687$
 $\Delta 3 = 2.111 = 345.986$
 $\Delta 4 = 2.268 = 345.829$
 $\Delta 5 = 2.329 = 345.768$

C both orig B3500 S extension
 SKETCH 1:75 N
 ↑

DEFINITION/DESCRIPTION of LOCUS (explain why you changed locus numbers):

Today's date: 05 July 2005 Locus above: B3505Locus parameters: E boundary = B3504, W boundary = W line of stones; N = B3503; S = orig S bank

Verbal description:

Wall tumble mixed w/ roofing clay

Locus Interpretative Comments (What do you think this is? DATE your comments, continue on additional pages if necessary):

05 July 2005

This is the wall tumble mixed w/ roofing clay from ~~the~~
 B3504 and other walls, poss. B3508, from the collapse of the room/building.

AZORIA Project

p.2

Year _____ Trench/Locus _____ Excavator _____

Locus/Pottery Pail Number	Weight of Sherds	Number of Sherds	Chronology & Comments
B3507.1	2,040 kg	95	Hell, LA, LM III C
B3507.2	3,590 kg	94	Hell, Early 5 th c, LA, LM III C
B3507.3	.160 kg	45	LA, O C (T)? LM III C
B3507.4	.600 kg	40	Hell? LA
B3507.5	9.30 kg	319	Hell, LA
B3507.6	11.775	688	Hell, Early 5 th c, LA
B3507.7	2.250	293	Recent Modern, Hell, Early 5 th c, LA, Lk-60
B3507.8	1.070 kg	198	Hell, LA, O

OBJECTS

Object Number	Associated Pottery Pail	Identification (material/form)	Location	Elevation	Catalogue Number
#1	B3507.6	stone tool frag?	NW half of trench		
#2	B3507.6	stone tool frag?	86 cm from B3508 2.20 m from B3504	345.597	
#1	B3507.5	metal object	97 cm from B3504 5.68 m from Shawille - mixed rocks.	345.993	
#2	B3507.5	loom weight	from pottery washing		

ADDITIONAL COLLECTED MATERIAL

Locus/Pottery Pail Number	Bones	Shell	Carbon	Pumice	Soil Sample	Other (specify)
B3507.1	X					
B3507.2	X				X	
B3507.3	X					
B3507.4	X					
B3507.5	X			X	X	
B3507.6	X				X	
B3507.7	X				X	
B3507.8	X				X	
B						

Year 2005 Trench/Locus ~~B3507~~ B3507 Excavator DFM

DESCRIPTION of PROGRESS of EXCAVATION [date each entry and identify associated pottery find(s)]:

04 July 2005

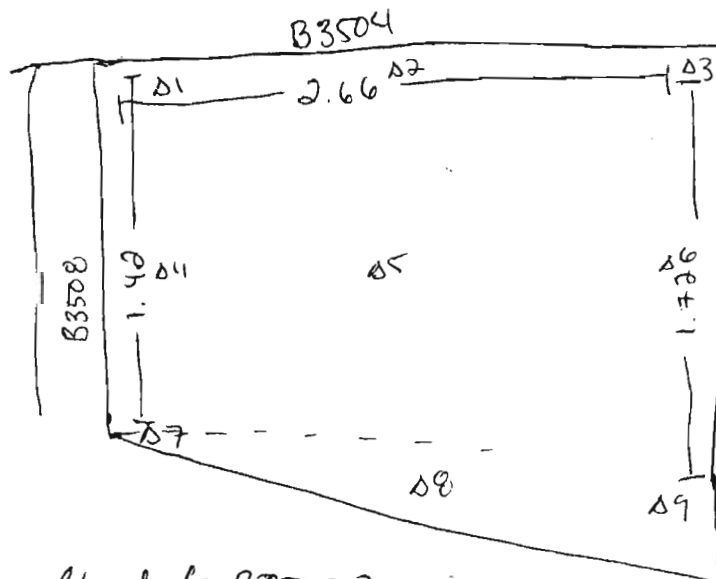
At the end of the day, ^{top} elevations were taken for this new locus B3507 - the wall tumble W of wall B3504. See locus sheet for dimensions + elevations.

Year 2005 Trench/Locus B3507 Excavator DFM

DESCRIPTION of PROGRESS of EXCAVATION [date each entry and identify associated pottery pail(s)]:

05 July 2005

This morning we began the removal of wall tumble just W of wall B3504. The pottery pail associated w/ this first pass is B3507.1. There were fairly large sized rocks with soil mixed inbetween. The soil was fairly gravelly and with some pockets of clayish material, particularly close to the W face of wall B3504. A fair bit of pottery was associated w/ the pail, notably coarse ware. After the pass was completed, the area was swept up to get a better sense of where the stones were, how many were left and the ratios of stone to soil. In addition, elevations were taken. There was more dirt visible in this layer of wall tumble. The next pass through the wall tumble is associated w/

pottery pail
B3507.2

Top Elevat. for B3507.2

Bot Elevat. for B3507.1

$$R61 = 2.316$$

$$HI = 348.142$$

$$\Delta 1 = 1.992 = 346.15$$

$$\Delta 2 = 2.080 = 346.142$$

$$\Delta 3 = 1.997 = 346.145$$

$$\Delta 4 = 2.093 = 346.049$$

$$\Delta 5 = 2.100 = 346.042$$

$$\Delta 6 = 2.017 = 346.125$$

$$\Delta 7 = 2.209 = 345.933$$

$$\Delta 8 = 2.122 = 346.02$$

$$\Delta 9 = 2.150 = 345.992$$

Year 2005 Trench/Locus B3507 Excavator DFM

DESCRIPTION of PROGRESS of EXCAVATION [date each entry and identify associated pottery find(s)]:

05 July 2005 (cont. from pg.)

In this pass, B3507.2, there were a bit less rocks, more dirt.

Though the rocks were much smaller in the W end of the wall tumble while the rocks closer to B3507 were ~~fairly~~ more substantial in size. The dirt amongst the stones ~~was~~ was more compact and there were more pockets of clayish material, again particularly along the W face/edge of wall B3504. Approximately 90 cm from B3508 (E/W cross wall), there was a high concentration of bones along the edge of B3504. An I.S.S. was taken to hopefully catch any bones that were missed in the original excavation. With the removal of the wall tumble, the possible E/W cross wall that was uncovered in the W end of the trench by locus B3505 appears to continue E ward to wall B3504. The line of this new B3508 was made more clear for some of the wall tumble had covered the E end of it. To further explore the ~~WS~~ edge of this new E/W cross wall and to define the N edge of it, the soil was removed on top of the wall and along the N to define the stones. The pottery find associated with this is B3507.3. The N edge was found and it is clear that this is an E/W wall that abuts B3504. It still remains unclear its relationship w/ B3503 that appears to run parallel w/ it.

Year 2005 Trench/Locus B3507 Excavator DFM

DESCRIPTION of PROGRESS of EXCAVATION [date each entry and identify associated pottery find(s)]:

05 July 2005 (cont from pg.)

^{the pan}
Once B3507.2 was finished, elevations were taken:

(See drawing on pg. —
for location of points)

RG 1 = 2.320

H.I = 348.146

Dot. elevat. for B3507.2

~~Dot. elevat. for B3507.3~~

$\Delta 1 = 2.158 = 345.988$

$\Delta 2 = 2.140 = 346.006$

$\Delta 3 = 2.150 = 345.996$

$\Delta 4 = 2.291 = 345.855$

$\Delta 5 = 2.300 = 345.846$

$\Delta 6 = 2.210 = 345.936$

$\Delta 7 = 2.450 = 345.696$

$\Delta 8 = 2.520 = 345.626$

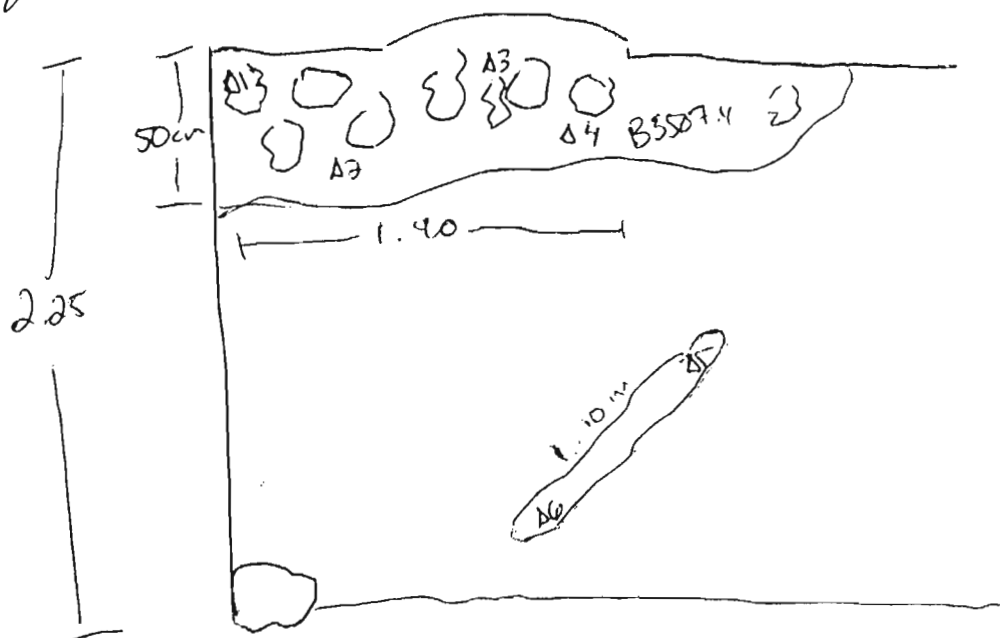
$\Delta 9 = 2.500 = 345.646$

Year 2005 Trench/Locus B3507 Excavator DFM

DESCRIPTION of PROGRESS of EXCAVATION [date each entry and identify associated pottery find(s)]:

08 July 2005

This morning we began a pass through the wall tumble that we uncovered - ~~by the~~ the pottery find associated w/ this pass is B3507.4. This first pass took out the top layer of ~~the~~ tumble that was only visible along the Wedge of the cont. of B3504 and the linear accumulation of rock in the W end. Before removing the wall tumble - elevations were taken. We took the pass, removing the tumble along the wall. There was roofing clay packed along the wall and we uncovered the tops of the next course of the wall. Once we were finished, elevations were taken before taking another pass through the wall tumble.



$$RG1 = 345.826$$

$$\text{Top} = \text{reading} = 2.409$$

$$HI = 348.235$$

$$\Delta 1 = 1.675 = 346.56$$

$$\Delta 2 = 1.832 = 346.403$$

$$\Delta 3 = 1.842 = 346.393$$

$$\Delta 4 = 1.870 = 346.365$$

$$\Delta 5 = 1.801 = 346.434$$

$$\Delta 6 = 1.820 = 346.415$$

Bottom =

$$\Delta 1 = 2.031 = 346.204$$

$$\Delta 6 = 2.092$$

$$\Delta 2 = 2.045 = 346.19$$

$$346.143$$

$$\Delta 3 = 2.020 = 346.215$$

$$\Delta 4 = 2.042 = 346.193$$

$$\Delta 5 = 2.040 = 346.195$$

Year 2005 Trench/Locus B3507 Excavator DFM

DESCRIPTION of PROGRESS of EXCAVATION [date each entry and identify associated pottery find(s)]:

08 July 2005 (cont from pg -)

Our next pass through the wall rubble is associated w/ pit B3507.5. The pass started at the West of the trench and worked Eward toward the wall. There is a clean lack of wall rubble at the West, though perhaps it slopes down dramatically in the W. There is a thick layer of soil with very little stones, ~~a pottery~~ but at a fair bit of soil, mostly of robbing clay. This pass is very deep and ~~there~~ ^{the} wall rubble is expanding out further from the West edge of the cont of B3504, approx 1.0 - 1.5 m. Approximately 3.68 m from the Skunk and 47 cm from the W face of the cont. of wall B3504 a long metal object was discovered, the tip had been broken off and so we screened the soil around it to see if we could find it. Two pieces were found, but prob still missing some. Unclear what exactly this metal object is - it is long, thin, though the edges aren't sharp, like a blade, but rather square and the object was bent in 2 and along the shorter piece it looked like there was some sort of attachment, forming a small T. It was sent in as object #1. →

Year 2005 Trench/Locus ~~B3507~~ B3507 Excavator DFM

DESCRIPTION of PROGRESS of EXCAVATION [date each entry and identify associated pottery pail(s)]:

08 July 2005 (cont from Pg. —)

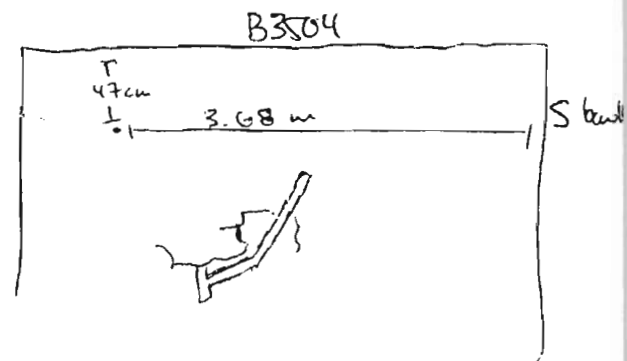
Object #1 - metal object

Elev -2.242

RAI = ~~100~~ 2.409

HI = 348.235

AI = 345.993



The object was found amongst the wall rubble, so clearly not in situ, but it's fairly well preserved.

As the pass continued, working from the W → to E and, N → S, there became a distinction between certain parts of the pass in terms of matrix of soil. In the S half of the ^{S extension} ~~pass~~, the soil was extremely compact, reddish, and esp. along the wall, almost seemed like packing. In this part there were large chunks of roofing material - red thorn. In the N half of the S extension, the soil was thick and had few stones - but the soil was the clay^{ey} material - like roofing clay - ~~very~~ heavy and compact. The distinction ~~at the point~~ appears to occur at ~~the point~~ the point of a possible E/W crosswall - a very large stone ~~is~~ appeared against B3504 - also at the point where the end of wall B3504 takes a bit of a zig and also where the construction of the wall differs. It's clear that we have two different things going on in the S extension of this trench and prob. 2 diff rooms too. So we decided that after we finish this pass through B3507.5 - no further excavation will be done in the S half of this S extension of B3500, past the S edge of the possible E/W crosswall. →

Year 2005 Trench/Locus B3507 Excavator DFM

DESCRIPTION of PROGRESS of EXCAVATION [date each entry and identify associated pottery pail(s)]:

08 July 2005 (cont from pg. --)

During this same pass, B3507.5, along the W edge of ~~the~~ B3504, approx. 280m from S. baulk, and just N of the lg. boulder abutting B3504 that could be the E/W cross wall, we came down upon a large cluster of bones. At least two handful of bones were collected before we stopped digging around and called in Lynne to further investigate the area. Lynne articulated the remaining bones in situ and said that as far as she saw, it was Pig bone - only 1 as far as she could tell - it had been butchered - the jaw bone cut. The soil around the pig was not Munt, but it was thick deposit of roofing clay and only a few sherds were visible, but it doesn't appear to be in a pot. The bones that Lynne articulated were left for a photograph - ~~one~~ that was taken at the end of the day and they will be removed by Lynne on Monday. The cluster of bones measures approx.

30cm wide + 40 cm long.

RG1 = 2.269

HI = 348.095

elevat = 2.061

Δ = 346.034



Year 2005 Trench/Locus B3507 Excavator DFM

DESCRIPTION of PROGRESS of EXCAVATION [date each entry and identify associated pottery pail(s)]:

11 July 2005

This morning we started the pass annotated w/ pottery pail B3507.6. This dimensions of this pass incorporated both the orig trench line and the S. extension of B3500. We had left a level of wall tumble covering the orig dimensions of the trench when we extended S - so now that we had reached a similar level of wall tumble in the S extension, we took a pass through the whole trench removing the final layer of wall tumble hoping to come down upon a layer of roofing material protecting a floor surface.

Before starting - elevations were taken

B3507.6 - top elevat.

RG 1 = 2.237 / 2.269

D1 = 2.149 = 345.946

D2 = 2.280 = 345.885 these elevat.

D3 = 2.047 = 346.008 may be off - road

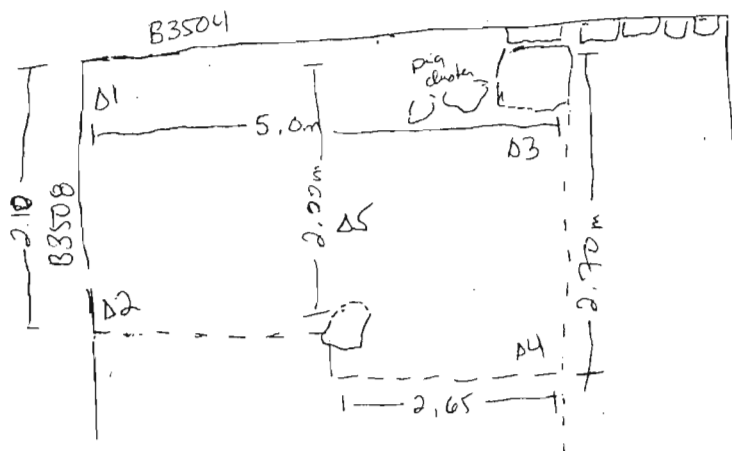
D4 = 2.365 = 345.788 when took measurement

D5 = 2.208 = 345.788 reading so unclear

what crosshair was

read w/ elevat.)

HJ = 348.095



Shortly after the pass, starting from ~~the~~ the N, a stone bowl was found among the soil - so a precise location is unknown, but it was in the NW part of trench. This is object #1. Continuing the pass Wward →

Year 2005 Trench/Locus B35007 Excavator DFM

DESCRIPTION of PROGRESS of EXCAVATION [date each entry and identify associated pottery find(s)]:

1st July 2005 (cont from pg. —)

another stone tool fragment was discovered - but it was left in situ and so measurements + elevations were taken - Obj. #2

RG1 = 2.269 86 cm from B3508
 H.I. = 348.015 2.20 m from B3504
 Elevat = 2.498
 DI = 345.597

As we dug out this tool this pass, there were three I.S.S. taken - #1, NW corner of room; #2 - NE corner of room; #3 - soil under pig bone cluster. ~~the~~ ~~top~~ When the pass reached the pig bone cluster - Lynn was called in to remove the bones. She collected a fairly substantial amount of bone - and the soil she dug out, which had fragments of bone, was collected + will be floated. As the pass moved in to the S extension of B3500 and started in the W, it was decided to change pails to help control the possible contamination that might occur in the W end since it has been so badly disturbed from slope wash + modern activity. This pail is B3507.7. The pass was rather deep as we cut from the W to the E, trying to keep level w/ the level of the soil in the N part of trench, since the deposition sloped up Eward. It was decided to stop that pass and before continuing it, take a shallow pass in the E half of the S. extension to level it off - the pottery pail associated w/ this is B3507.8. →

Year 2005 Trench/Locus B3507 Excavator DFM

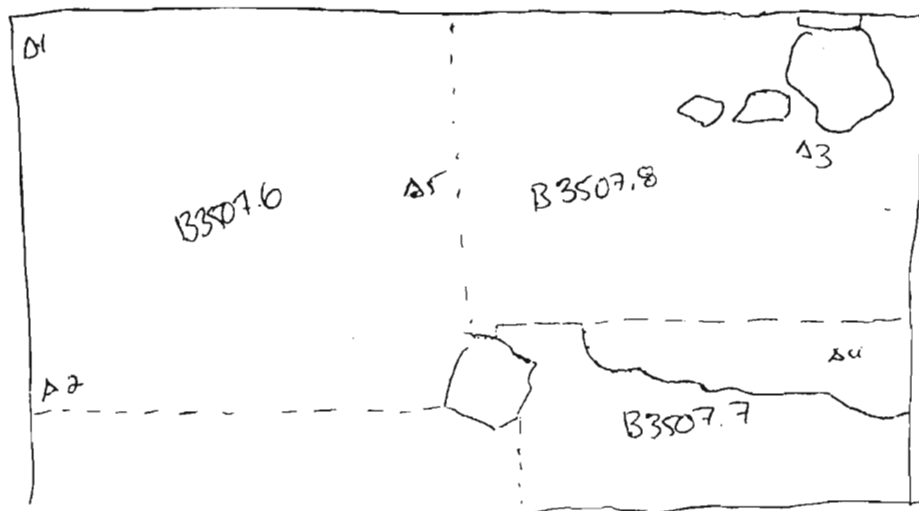
DESCRIPTION of PROGRESS of EXCAVATION [date each entry and identify associated pottery pile(s)]:

11 July 2005 (cont. from pg. —)

Another I.S.S. was taken on B3507.8, again around the area of the pig bone cluster, along the W edge of B3504.

Once the pan was finished, the area was swept + photographed and final elevations were taken for B3507 and top elevations for B3509.

RG1 = 2271
 H.I. = 348.097
 Δ1 = 2.306 = 345.791
 Δ2 = 2.410 = 345.687
 Δ3 = 2.111 = 345.986
 Δ4 = 2.268 = 345.829
 Δ5 = 2.329 = 345.768

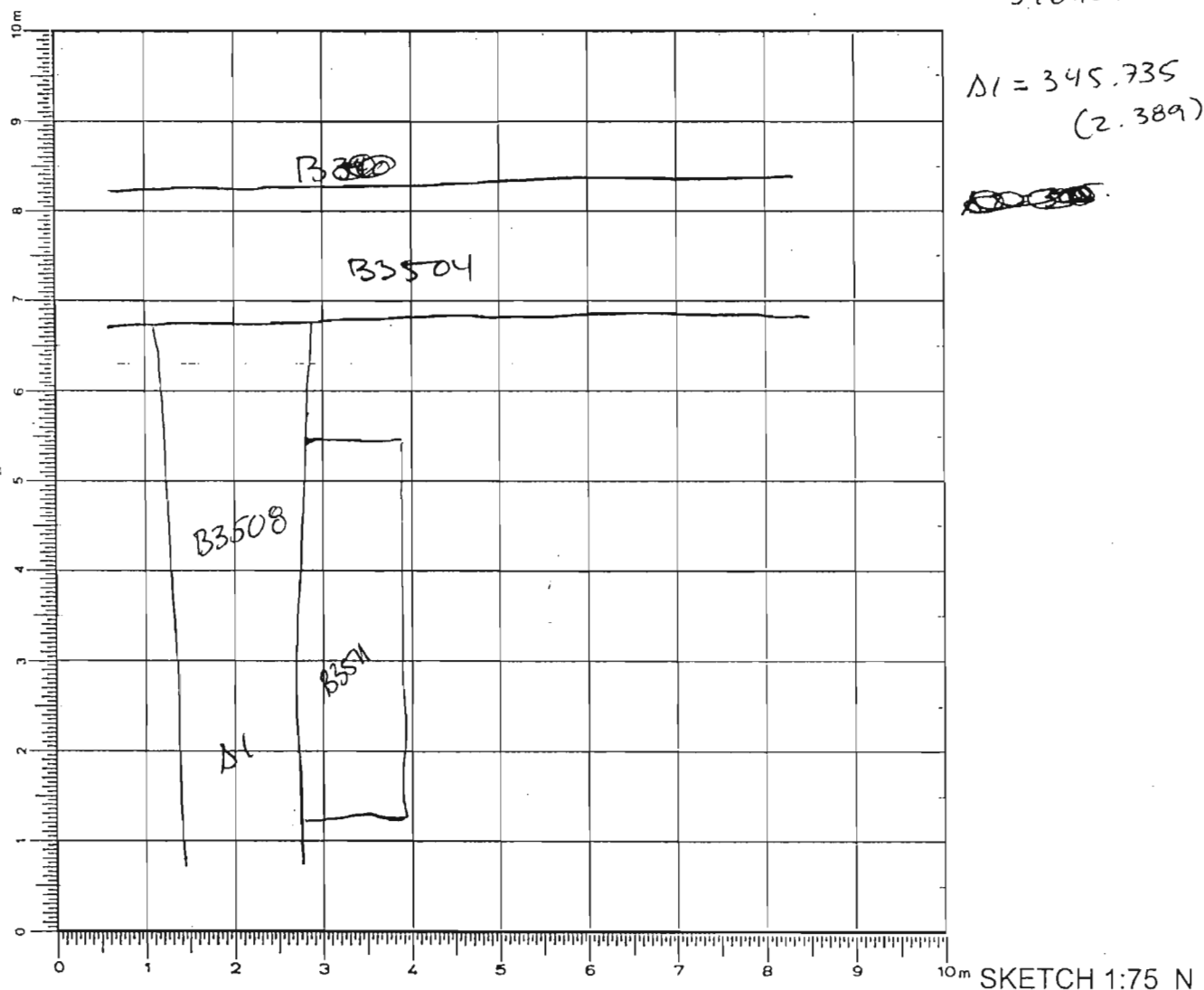


A feature that was uncovered by these passes of B3507 (.6/.7./8) is a possible bench that lies parallel w/ B3504, just the top of the stones were uncovered and so ~~but the next locus~~ w/ the excavation of the next locus, B3509, will provide further confirmation. There was a large amount of ~~pot~~ pottery in the N half of the trench and a fair # of planks are ~~at~~ the apparent.

Year 2005 Trench/Locus B3508 Excavator DFM
(E/W wall)

Elevations

Benchmark used: PG1
Reading on
Benchmark: 0.298
H.I.: 348.124



DEFINITION/DESCRIPTION of LOCUS (explain why you changed locus numbers):

Today's date: 05 July 2005 Locus above: B3505 + B3507

Locus parameters: E boundary = B3504 ; W boundary - under ends abruptly
Measures approx. 200m E/W ; 50cm N/S

Verbal description:

E/W crosswall, a butting B3504, forming N boundary for interior space of B3500

A wall consisting of ~~of~~ medium to large stones with at least 1st peeling; ~~at~~ preserved at 2-3 corners and it is the width of 2 stones; joins up against B3504

Locus Interpretative Comments (What do you think this is? DATE your comments, continue on additional pages if necessary):

AZORIA Project

p.2

Year _____ Trench/Locus _____ Excavator _____

[illegible]

OBJECTS

[illegible]

ADDITIONAL COLLECTED MATERIAL

[illegible]

AZORIA Project

p. ____

Year 2005 Trench/Locus B3508 Excavator DFM

DESCRIPTION of PROGRESS of EXCAVATION [date each entry and identify associated pottery find(s)]:

12 July 2005

This afternoon, some time was spent cleaning off the wall B3508 of extraneous dirt and we further defined the stones of this wall. The pottery find associated w/ this is B3508.1.

Year 2005 Trench/Locus B3509 Excavator DFM

Elevations

Benchmark used: R41

Reading on

Benchmark: 2,271

H.I.: 398,097

Top.

$\Delta 1 = 2.306 = 345.791$

$\Delta 2 = 2.410 = 345.687$

$\Delta 3 = 2.111 = 345.986$

$\Delta 4 = 2.268 = 345.829$

$\Delta 5 = 2.329 = 345.768$

Bottom =

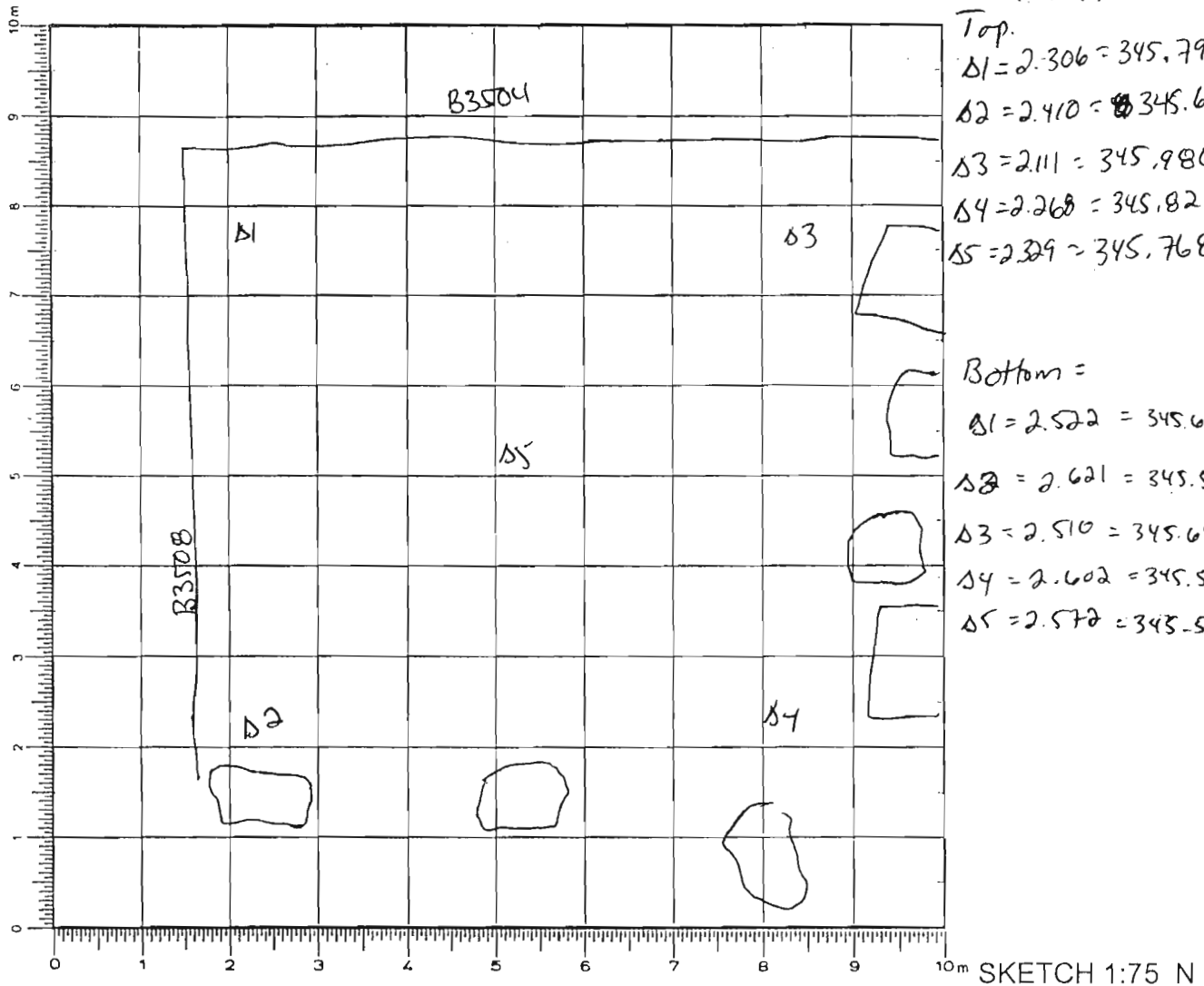
$\Delta 1 = 2.522 = 345.634$

$\Delta 2 = 2.621 = 345.535$

$\Delta 3 = 2.510 = 345.646$

$\Delta 4 = 2.602 = 345.554$

$\Delta 5 = 2.572 = 345.504$



DEFINITION/DESCRIPTION of LOCUS (explain why you changed locus numbers):

Today's date: 21 July 2005 Locus above: B3507

Locus parameters: N boundary = B3508; S boundary = line of stone upon bedrock feature B3512; E = B3504; W = line of stone along w edge

Verbal description: Matrix of the soil is medium to compact - much roofing clay and habitation debris of pottery, bone and carbon flecks

Locus Interpretative Comments (What do you think this is? DATE your comments, continue on additional pages if necessary):

Year 2005 Trench/Locus B3509 Excavator DFM

DESCRIPTION of PROGRESS of EXCAVATION [date each entry and identify associated pottery find(s)]:

11 July 2005

After photos & elevat. taken, we began the pan B3509.1 - the layer of roofing clay and habitation debris that hopefully lies above the floor. The pan started on the N wall of B3500 and started in the W and worked its way E. Scan into the pan, a large piece of pumice was found and it was identified = #1

2.10m from B3500

RGL = 2.271

H.I = 348.097

1.85m from B3504

Elevat. = 2.445

$\Delta = 345.652$

An I.S.S. was taken in the W half of room over the platform.

Year 2005 Trench/Locus B3509 Excavator DFM

DESCRIPTION of PROGRESS of EXCAVATION [date each entry and identify associated pottery find(s)]:

12 July 2005

This morning we continued our pass through B3509 that was started yesterday (B3509.1), though hadn't gotten too far into the room heading E. The pottery find associated w/ this continuing pass is B3509.2.

The pass continued Eward toward B3504 and more of the bench was revealed - in terms of further outlining the stones and revealing more of the depth of the stones that make up this 'bench' feature. In the corner of B3508+B3504, between the two large stones, ~~there was~~ ^{a spindle wheel was} find. This became obj. #1, measuring 47cm from B3508 + 3cm from B3504.

obj's elevation is: Obj 1 = 2.319 #2 = 348.145

elevat. 2.394 Δ = 345.751

Throughout the pass we took 5 I.S.S. in various parts across the ~~floor or outside the room~~ ^{is a floor} locus.

- #1 = SE edge along B3508
- #2 = N. central part of room
- #3 = soil above pot scatter in SE part of room
- #4 = soil above plahas along S edge of B3508
- #5 = soil along S edge of B3508, area of burning.

A double line of flat stone plahas run up against and parallel

Year 2005 Trench/Locus B3509 Excavator DFM

DESCRIPTION of PROGRESS of EXCAVATION [date each entry and identify associated pottery pail(s)]:

12 July 2005

to B3508. There was a patch of burning in the NE corner of planks and ~~some~~ large chunks of carbon were collected and brought down. Approx. 70cm from B3504 and along S edge of B3508

After finishing the pass, it was clear we had not yet reached the floor surface, so we took another pass through the layer of roofing clay + habitation debris - this is annotated w/ pail B3509.3. Before we started the pass, elevations were taken:

Top elevat for B3509.3 / End elevat for B3509.2

RG1 = 2.319

H.I = 348.145

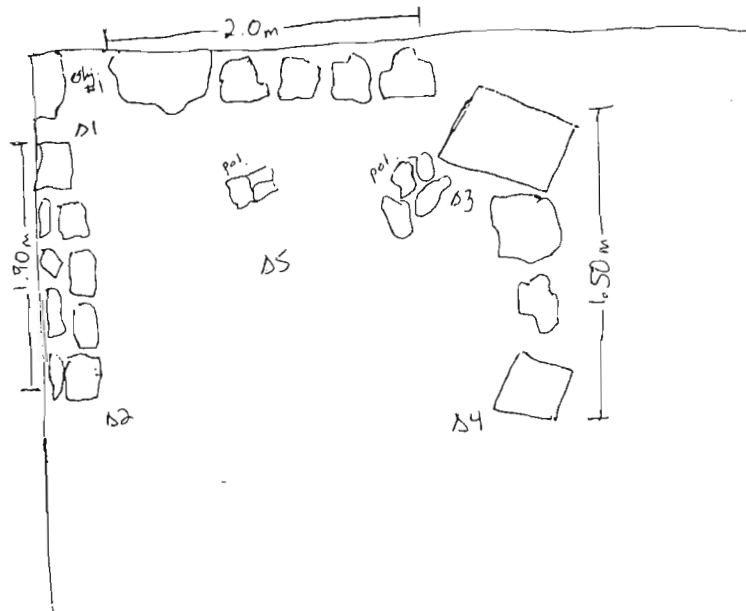
D1 = 2.483 = 345.662

D2 = 2.554 = 345.591

D3 = 2.381 = 345.704

D4 = 2.513 = 345.632

D5 = 2.439 = 345.706



Year 2005 Trench/Locus B3509 Excavator DFM

DESCRIPTION of PROGRESS of EXCAVATION [date each entry and identify associated pottery pail(s)]:

12 July 2005 (cont. from pg. —)

The pass B3509.3, like the other passes, began on the N half of the trench, along the wedge. ~~OK~~ It was apparent fairly quickly that we were coming down upon a floor surface - the layer of soil was breaking off at a certain point and the surface was fairly hard. In the center of the room, in the area enclosed by at least two benches and an odd linear accumulation there was a stone plaque and just to the E of it was a stone guern. The pecked surface, showing tilting into the soil. There also was a few ~~the~~ pottery shards scattering the floor. As we reached the bench, which is now designated as B3510, and

the pass # ended and headed south toward the linear accumulation of stones, a large ^{patch} ~~portion~~ bedrock ^{seems} ~~seemed~~ to occupy that area and the pottery scatter was resting upon the bedrock. It almost looks like the bedrock + the E/W line of stones form a bin like feature. But further investigation is needed. In between the bedrock and the second stone ^(from the E) ~~the~~ the E/W line, there was a large ~~cl~~ of carbon. It was collected & sent ⁱⁿ.

Year 2005 Trench/Locus B3509 Excavator DFM

DESCRIPTION of PROGRESS of EXCAVATION [date each entry and identify associated pottery pail(s)]:

12 July 2005 (cont from pg. —)

During pass B3509.3, there were four I.S.S. taken:

I.S.S. #1 - NE corner of room

I.S.S. #2 - N. central half of room

I.S.S. #3 - Centre of room betw. Plakas + pottery scatter

I.S.S. #4 - Soil betw. bedrock + line of stones around carbon.

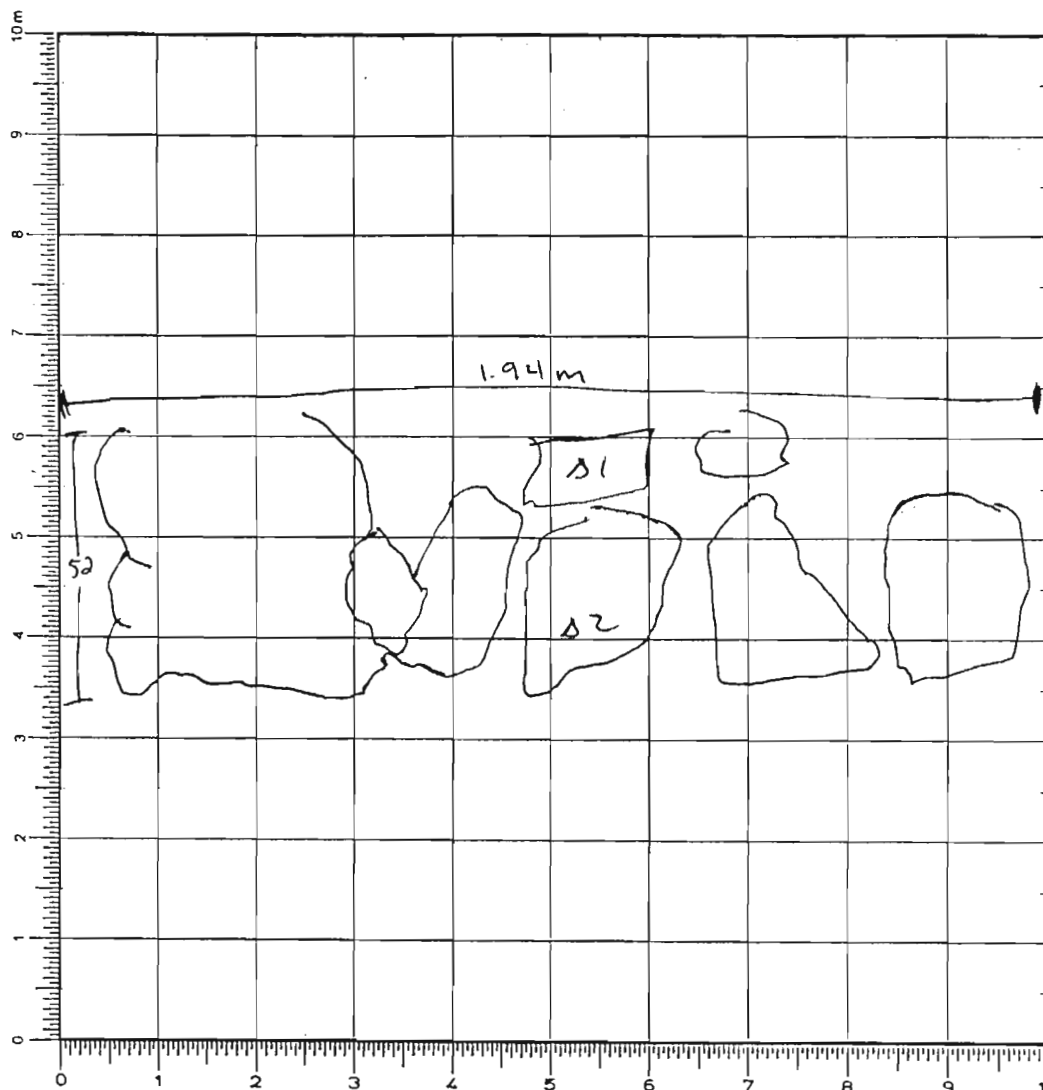
The pass was completed, taking out most of the pottery that was lying on the floor. The area was swept and will be photographed tomorrow.

Year 2005 Trench/Locus B3570 Excavator DFMElevationsBenchmark used: R61

Reading on

Benchmark: 2.298H.I.: 348.124

← N



$$\Delta 1 = 2.214 = 345.910$$

$$\Delta 2 = 2.235 = 345.889$$

SKETCH 1:75 N

DEFINITION/DESCRIPTION of LOCUS (explain why you changed locus numbers):

Today's date: 12 July 2005Locus above: B3507/B3505Locus parameters: 1.91m - N/S; 52cm - E/W; built up against B3504
long wideVerbal description: stone bench running N/S, ~~parallel~~ parallel w/ B3504, made up of
a large boulder

Locus Interpretative Comments (What do you think this is? DATE your comments, continue on additional pages if necessary):

12 July 2005 - This is a stone bench used as a work surface on a flat platform to place material/items on

p.2

[illegible]

OBJECTS

[illegible]

ADDITIONAL COLLECTED MATERIAL

[illegible]

AZORIA Project

p. ____

Year 2005 Trench/Locus B3510 Excavator DFM

DESCRIPTION of PROGRESS of EXCAVATION [date each entry and identify associated pottery find(s)]:

12 July 2005

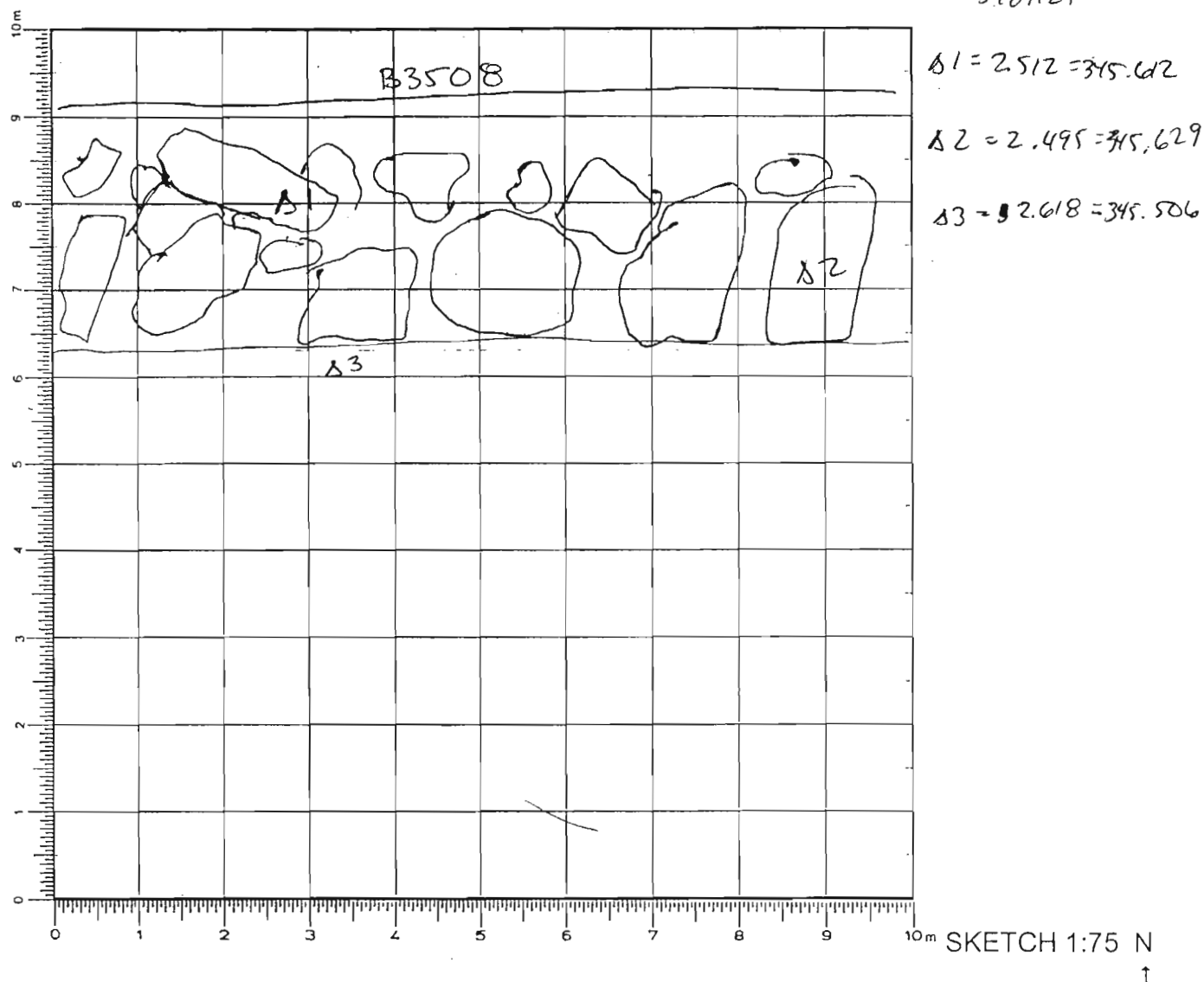
This afternoon, we further defined the bench feature that runs parallel to B3504 by removing the soil that was ~~for~~ still partially covering some of the stones. The pottery find associated w/ this project is B3510.1.

Year 2005 Trench/Locus B3511 Excavator DFM**Elevations**Benchmark used: 261

Reading on

Benchmark: 2.298H.I.: 348.124

N ↑



DEFINITION/DESCRIPTION of LOCUS (explain why you changed locus numbers):

Today's date: 12 July 2005 Locus above: B3507/B3509Locus parameters: E/W - 1.91 m ; N/S - 58 cm ; built up against B3508 ; terminates at W end of stairs along wedgeVerbal description: Double row of planks, lined along base of E/W, parallel to B3508

Locus Interpretative Comments (What do you think this is? DATE your comments, continue on additional pages if necessary):

Low plank benches, used as a work surface (?)

Year

Trench/Locus

Excavator

[illegible]

OBJECTS

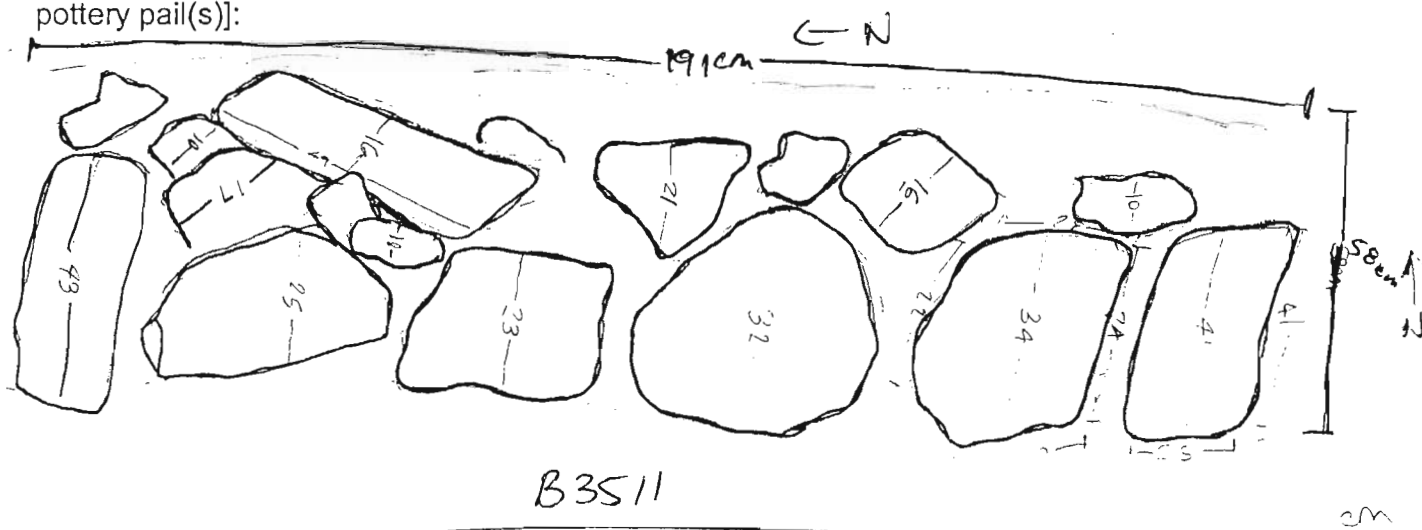
[illegible]

ADDITIONAL COLLECTED MATERIAL

[illegible]

Year 2005 Trench/Locus B3511 Excavator DFM

DESCRIPTION of PROGRESS of EXCAVATION [date each entry and identify associated pottery pail(s)]:

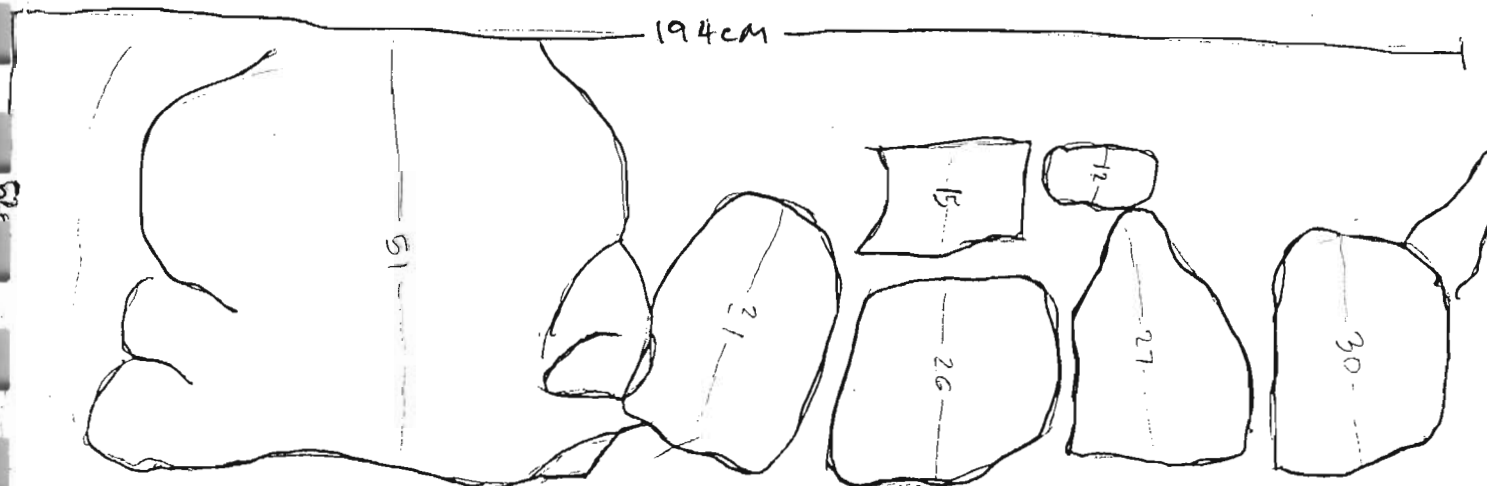


2005

B3510

DFM

← N

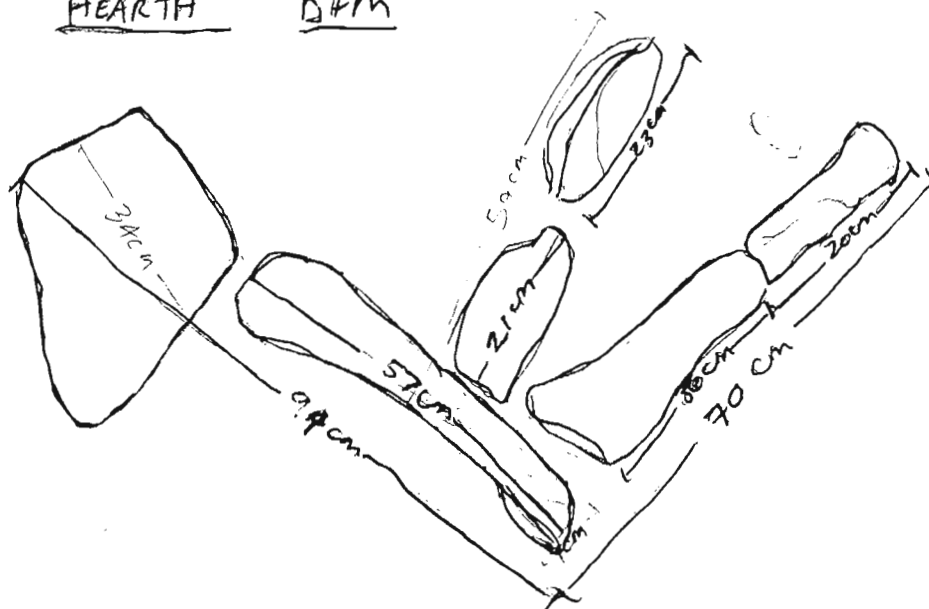


2005

"HEARTH"

DFM

← N



Year 2005 Trench/Locus B3512 Excavator DFMElevations

Benchmark used:

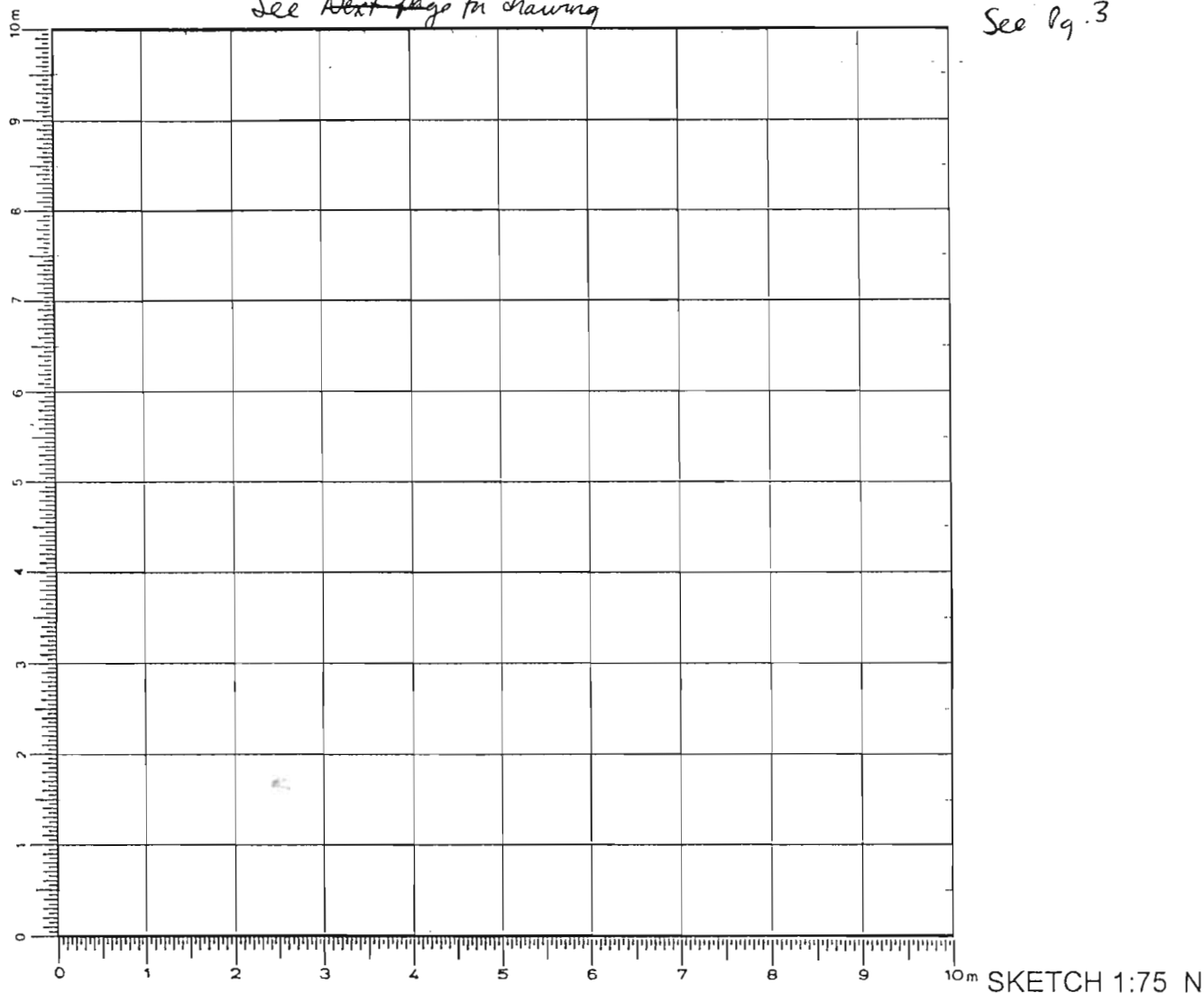
Reading on

Benchmark:

H.I.:

^{pg 3}
See ~~text~~ page for drawing

See pg. 3



DEFINITION/DESCRIPTION of LOCUS (explain why you changed locus numbers):

Today's date: 13 July 2005Locus above: B3509Locus parameters: ~~as above~~Verbal description: Worked bedrock feature with line of stones placed on top of S end, forming ~ type of bin

Locus Interpretative Comments (What do you think this is? DATE your comments, continue on additional pages if necessary):

Worked bedrock bin

p.2

p.2

p.2

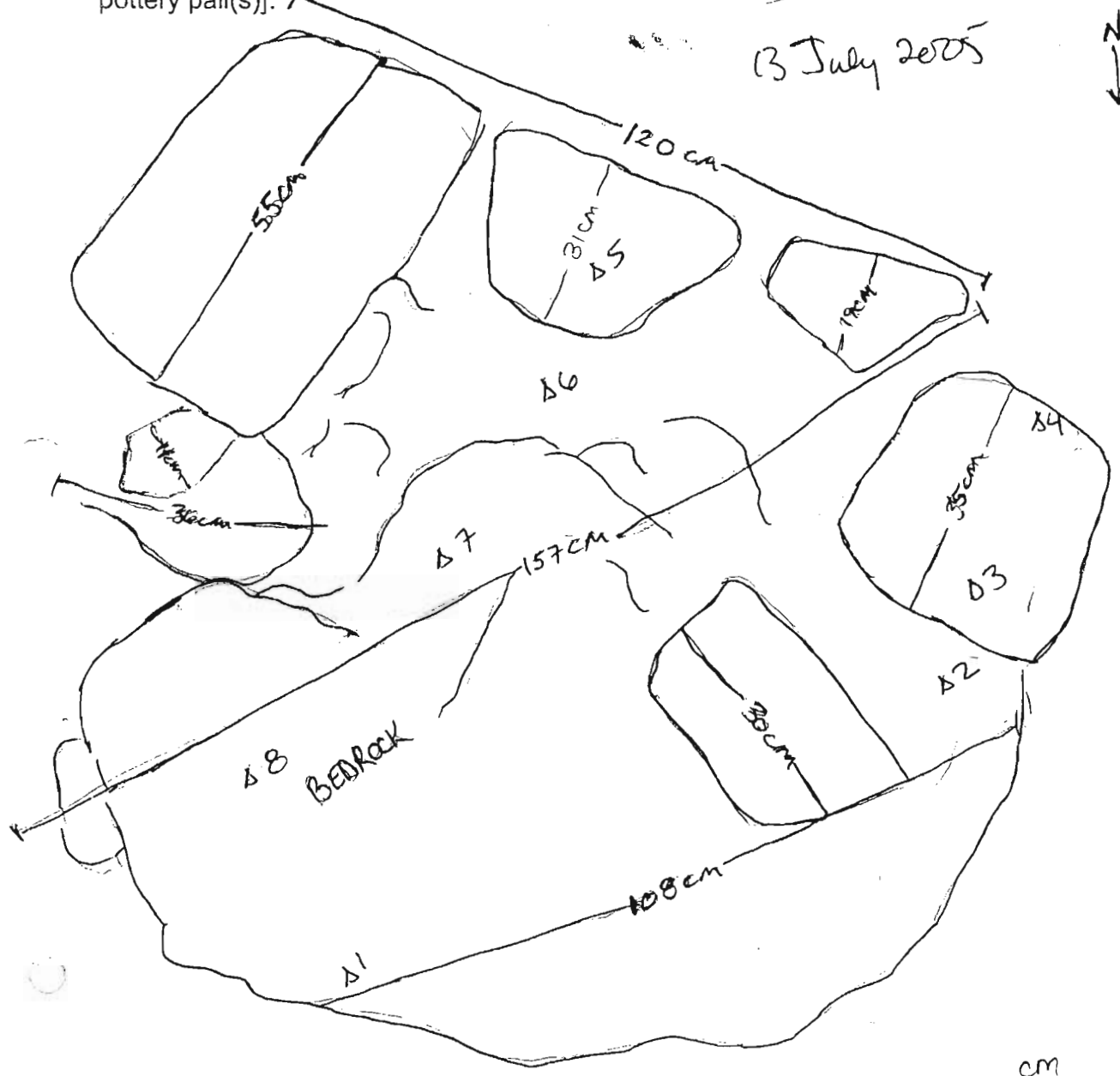
p.2

p.2

p.2

Year 2005 Trench/Locus B3512 Excavator DFM

DESCRIPTION of PROGRESS of EXCAVATION [date each entry and identify associated pottery pail(s)]:



$$RG1 = 345.826$$

$$2.298$$

$$H.I = 348.124$$

$$\Delta 1 = 2.582 = 345.542$$

$$\Delta 2 = 2.501 = 345.623$$

$$\Delta 3 = 2.218 = 345.906$$

$$\Delta 4 = 2.292 = 345.832$$

$$\Delta 5 = 2.266 = 345.858$$

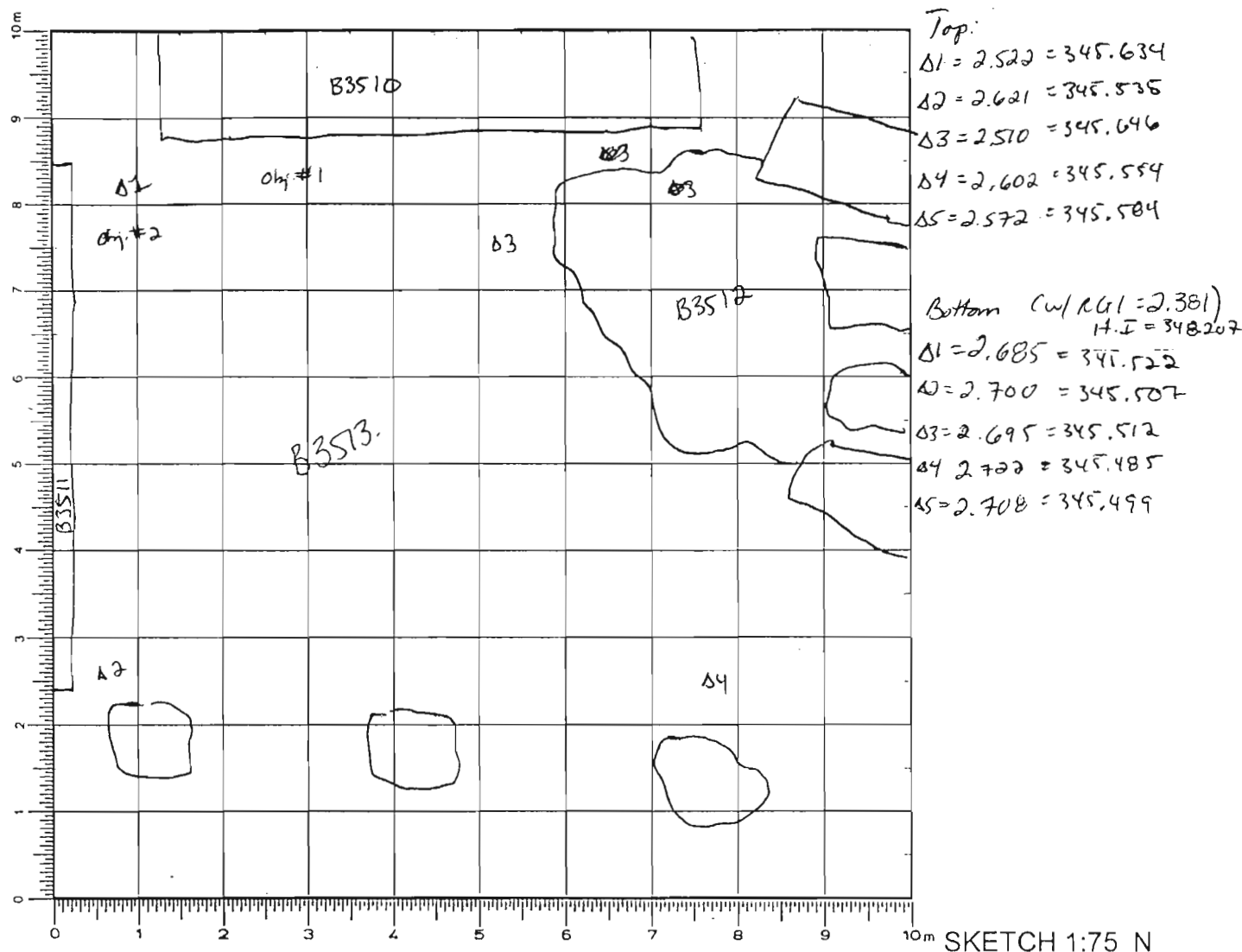
$$\Delta 6 = 2.457 = 345.667$$

$$\Delta 7 = 2.408 = 345.719$$

$$\Delta 8 = 2.629 = 345.658$$

Year 2005 Trench/Locus B3513 Excavator DFM**Elevations**Benchmark used: RG1

Reading on

Benchmark: 2.330H.I.: 348.156

DEFINITION/DESCRIPTION of LOCUS (explain why you changed locus numbers):

Today's date: 13 July 2005Locus above: B3509Locus parameters: N-boundary = B3511; E-boundary = B3510; S-boundary = B3512; W boundary = line of stones along wedgeVerbal description: Clay soil, w/ habitation debris of carbon, pottery, bone, fragments of schist; fairly compact

Locus Interpretative Comments (What do you think this is? DATE your comments, continue on additional pages if necessary):

3 July 2005: This locus is the layer of habitation debris and roofing clay lying upon the floor surface.

→

Year	Trench/Locus	Excavator
------	--------------	-----------

[illegible]

OBJECTS

[illegible]

ADDITIONAL COLLECTED MATERIAL

[illegible]

Year 2005 Trench/Locus ~~B3510~~ B3513 Excavator DFM

DESCRIPTION of PROGRESS of EXCAVATION [date each entry and identify associated pottery pail(s)]:

13 July 2005

This morning we started a pass through the floor ~~to~~ in the trench to see if there was an earlier floor surface. The pail associated w/ this is B3513T.

The pass started at the West end and moved E. With some difficulty, the surface was found, though it is unclear yet if it is ^{much} earlier than the one above it, or are we just getting a series of floor surfaces from within a habitation period. The surface itself has pottery, bone, and flecks of carbon embedded into the surface. Soon into the pass, an interesting feature appeared at the S end of the room, built up against the bedrock, incorporating it into the ~~feature~~ architecture. This feature, now B3515, is either some sort of hearth or hearth though there was no evidence of burning. Soil samples were taken around this feature, as well as from ~~the~~ within. The 'hearth' is outlined by long, thin rocks laid into the surface vertically. There was a large pitlike fragment from inside the 'hearth'. The S wall of the 'hearth' is actually the bedrock, so it seems that they built up this feature against it and used the bedrock as the back wall. The E line of stones of the 'hearth' appear out of place and they have slipped forward. Along the S edge of B3511, close to the corner betw B3511+B3512, there was large chunks of carbon in 2 separate areas. Both ~~area~~ clusters of carbon were collected, as well as the soil surrounding the area. Also in this area we found a well preserved iron arrowhead, with a completely in fact tang. This is object # 2 and the measurements + elevations for it →

Year 2005 Trench/Locus B3513 Excavator DFM

DESCRIPTION of PROGRESS of EXCAVATION [date each entry and identify associated pottery pail(s)]:

13 July 2005 (cont. from pg. —)

are as follows:

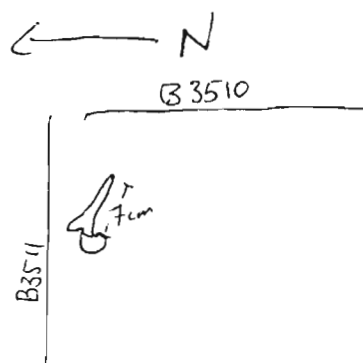
$RG1 = 2.33$

$\Delta 1 = 2.62$

$\Delta = 345.534$

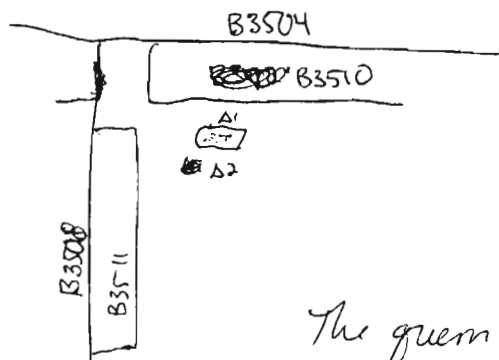
From B3504 = 1.14 m

from S edge of B3511 = 3.5 cm



Object # 1 is the stone guern that was uncovered by B3509. - J

Measured 29 cm long, 16 cm wide and 64 cm from B3504
 98 cm from B3508
 11 cm from B3510



$RG1 = 2.330$

$\Delta 1 = 2.462 \quad \Delta 1 = 345.694$

$\Delta 2 = 2.8535 \quad \Delta 2 = 345.621$

The guern was lying tilted, just resting on the ground/surface?

As the pan continued, closer to the ^w edge of B3510, the floor surface was lost and we ~~came~~ came across white packing that was most likely the bedding for the benches that was cut into the floor surface.

Throughout the pan, 11 E.S.S. were taken in varying areas of the floor, particularly if there were chunks of carbon and along edges of walls + features, while the benches + hearths.

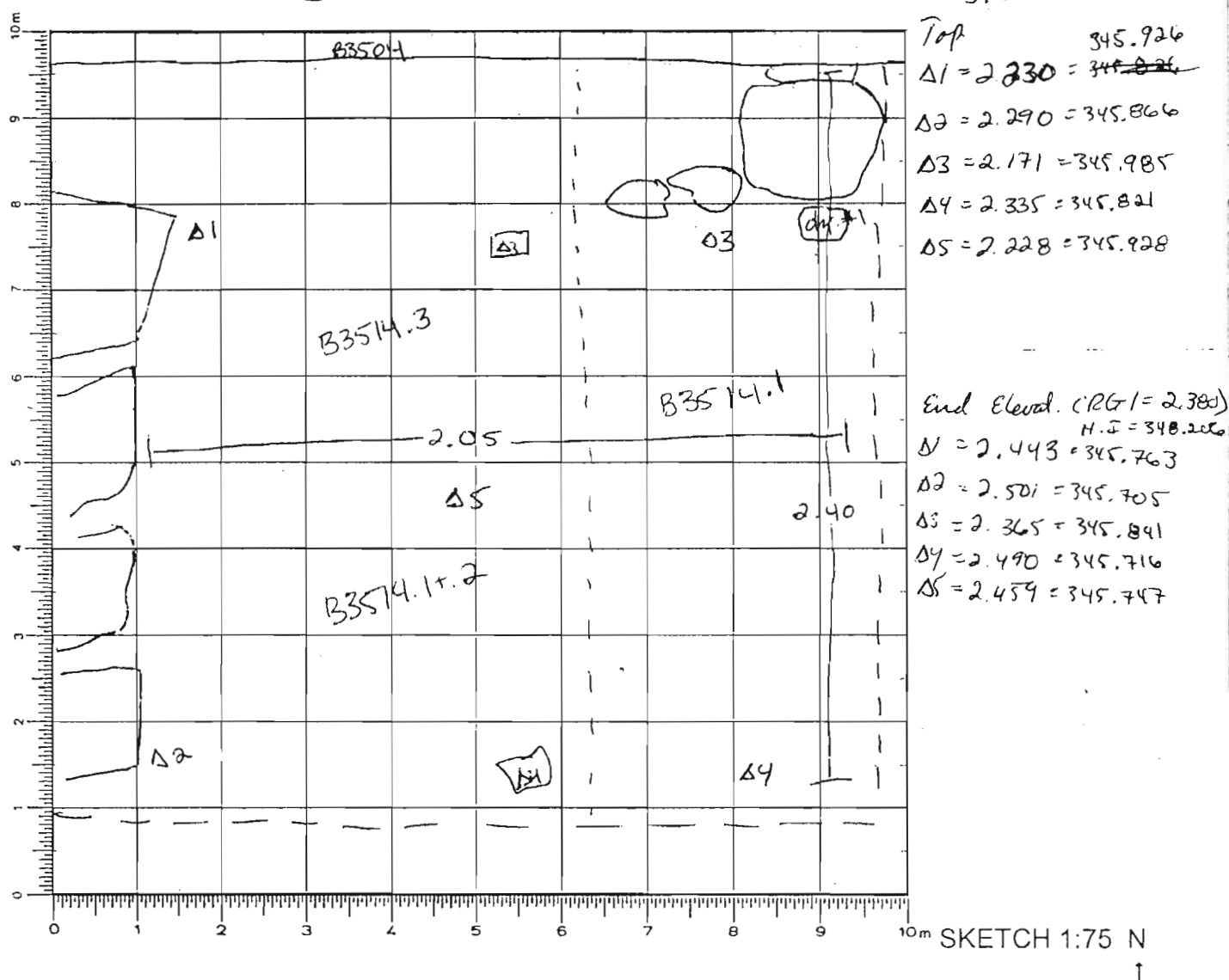
Once the pan was completed and the floor was uncovered, final elevations were taken. ^{set} ^{lev} ^{stn}

Year 2005 Trench/Locus B3514 Excavator DFM

Elevations

Benchmark used: RG1

Reading on

Benchmark: 2.33H.I.: 348.156

DEFINITION/DESCRIPTION of LOCUS (explain why you changed locus numbers):

Today's date: 13 July 2005Locus above: B3507

Locus parameters:

N boundary = S edge of stones lining B3512; S boundary = S lin of large boulder against
 W edge of B3504; E = B3504; W = ~~edge~~ Wedge of dirt of filler base, just W of B3512

Verbal description:

The matrix of this locus is divided into two halves; the N half soil is very heavy, thick, clayey like the roofing material, with flecks of carbon + pottery; in the S half, the 'strip' of soil behind the large boulder abutting the cent of B3504, it is mostly all cobblestones + little soil, quite red - appears to be the wall bedding for a wall that prob had been there.

Locus Interpretative Comments (What do you think this is? D.F.T.E your comments, continue on additional pages if necessary):

3 July 2005 Roofing clay and habitational debris in the N part of this locus and wall bedding, preheating in S half.

Year

Trench/Locus

Excavator

[illegible]

OBJECTS

[illegible]

ADDITIONAL COLLECTED MATERIAL

[illegible]

Year 2015 Trench/Locus B3514 Excavator DFM

DESCRIPTION of PROGRESS of EXCAVATION [date each entry and identify associated pottery pail(s)]:

13 July 2005

After finding the floor surface in the N half of the trench, excavation resumed in the S half, into the S extension area to figure out what if any is the relationship betw these two areas. Elevations were taken ~~for~~ before we started the pan, which pail B3514.1 represents. We moved from the W \rightarrow to the E and there clearly was a difference betw the two halves - in the area behind the boulder, we were digging through the bedding for a wall that had been there. To the N, in the the soil was the roofing clay mixture. So after that pan, it was decided to only excavate in the N half of this locus, in search of a floor surface. This pan is uncrested w/ B3514.2. The pan had just started, but traces of a floor was found and so we will continue the pan tomorrow, following the floor surface up to B3514.1.

An object was sent down as part of B3514.1 - it was a thin Schist plaque that was lying just W of the large boulder. Object #1 elevation: $RG1 = 2.330$
 elev of obj. = 2.115 $\Delta = 346.041$

Elev. was also taken after B3514.1 was completed: see locus sheet for locations

RG1 = 2.33 $\Delta 4 = 2.40 = 345.756$
 $\Delta 1 = 2.329 = 345.847$ $\Delta 5 = 2.342 = 345.816$
 $\Delta 2 = 2.405 = 345.751$
 $\Delta 3 = 2.309 = 345.847$

42 =
48.156

Year 2005 Trench/Locus B3514. Excavator DFM

DESCRIPTION of PROGRESS of EXCAVATION [date each entry and identify associated pottery find(s)]:

14 July 2005

This morning we continued the pass started late yesterday afternoon (B3514.2) and continued revealing the floor surface that runs up against the S edge line of B3512. The ~~pass~~ pit associated w/ this pass is B3514.3 and

* The floor continued along the S of B3512 and up to the cobblestone bedding for a wall in the S half. There were patches of soil that seemed more concentrated in burnt ~~material~~ soil + flecks of carbon, so 2 I.S.S. were

taken in those areas. The floor disappears as it gets closer to the edge of B3504 and the packing for the wall is quite visible and the soil becomes loose + soft. The pass was completed and final elevat. were taken

$$RG1 = 2.38$$

$$\Delta 1 = 2.443$$

$$\Delta 2 = 2.501$$

$$\Delta 3 = 2.365$$

$$\Delta 4 = 2.490$$

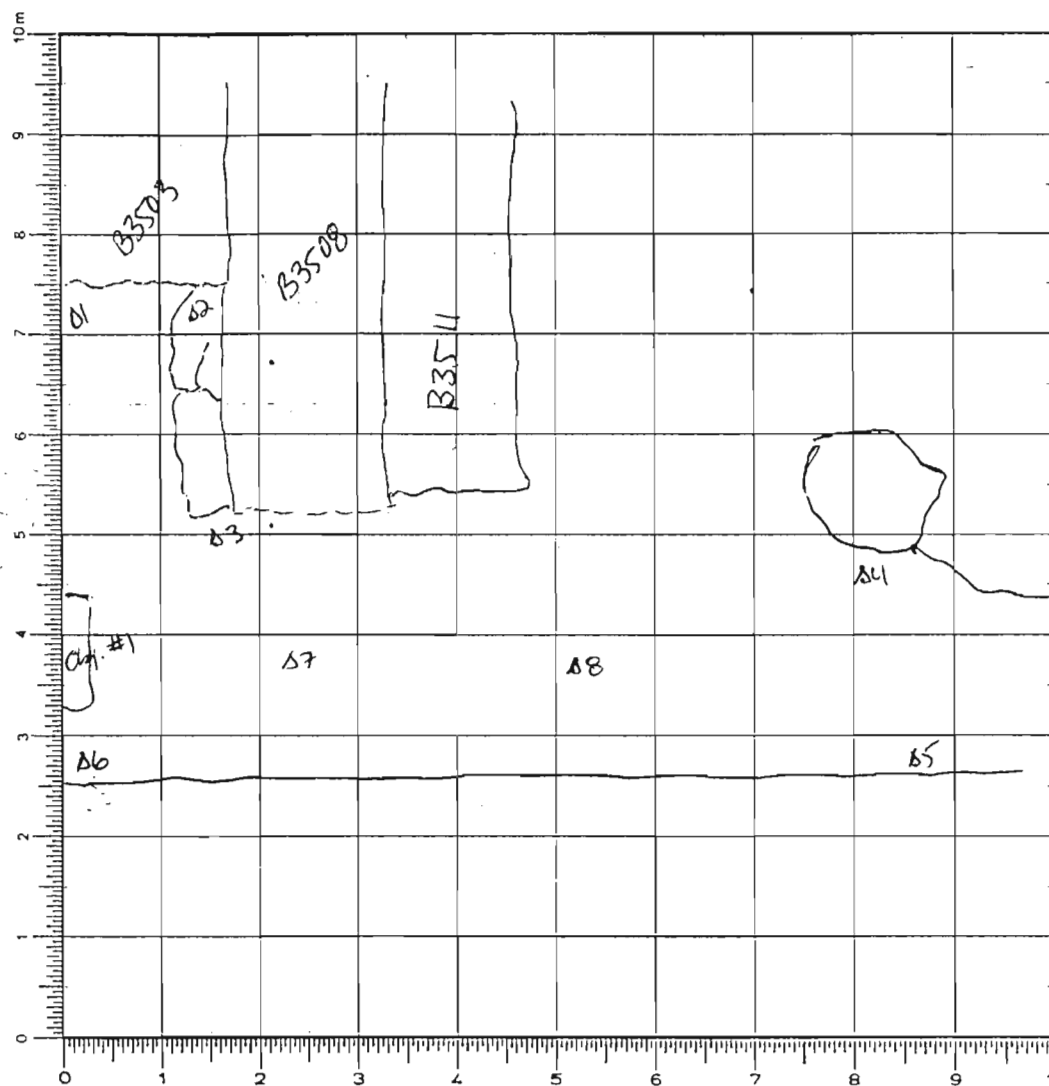
$$\Delta 5 = 2.459$$

Year 2005 Trench/Locus B3575 Excavator DFM

Elevations

Benchmark used: PL1

Reading on

Benchmark: 2.381H.I.: 348.207

Top - B3515.1

 $\Delta 1 = 2.670 = 345.537$ $\Delta 2 = 2.675 = 345.532$ $\Delta 3 = 2.685 = 345.512$ $\Delta 4 = 2.747 = 345.460$ $\Delta 5 = 2.797 = 345.410$ $\Delta 6 = 2.717 = 345.490$ $\Delta 7 = 2.734 = 345.473$ $\Delta 8 = 2.773 = 345.434$ $\Delta 9 = 2.773 = 345.434$ $\Delta 10 = 2.773 = 345.434$ $\Delta 11 = 2.773 = 345.434$ $\Delta 12 = 2.773 = 345.434$ $\Delta 13 = 2.845 = 345.362$ $\Delta 14 = 2.812 = 345.375$ $\Delta 15 = 2.865 = 345.342$ $\Delta 16 = 2.875 = 345.332$ $\Delta 17 = 2.861 = 345.346$ $\Delta 18 = 2.850 = 345.357$ $\Delta 19 = 2.850 = 345.357$ $\Delta 20 = 2.850 = 345.357$ $\Delta 21 = 2.850 = 345.357$ $\Delta 22 = 2.850 = 345.357$ $\Delta 23 = 2.850 = 345.357$ $\Delta 24 = 2.850 = 345.357$ $\Delta 25 = 2.850 = 345.357$ $\Delta 26 = 2.850 = 345.357$ $\Delta 27 = 2.850 = 345.357$ $\Delta 28 = 2.850 = 345.357$ $\Delta 29 = 2.850 = 345.357$ $\Delta 30 = 2.850 = 345.357$ $\Delta 31 = 2.850 = 345.357$ $\Delta 32 = 2.850 = 345.357$ $\Delta 33 = 2.850 = 345.357$ $\Delta 34 = 2.850 = 345.357$ $\Delta 35 = 2.850 = 345.357$ $\Delta 36 = 2.850 = 345.357$ $\Delta 37 = 2.850 = 345.357$ $\Delta 38 = 2.850 = 345.357$ $\Delta 39 = 2.850 = 345.357$ $\Delta 40 = 2.850 = 345.357$ $\Delta 41 = 2.850 = 345.357$ $\Delta 42 = 2.850 = 345.357$ $\Delta 43 = 2.850 = 345.357$ $\Delta 44 = 2.850 = 345.357$ $\Delta 45 = 2.850 = 345.357$ $\Delta 46 = 2.850 = 345.357$ $\Delta 47 = 2.850 = 345.357$ $\Delta 48 = 2.850 = 345.357$ $\Delta 49 = 2.850 = 345.357$ $\Delta 50 = 2.850 = 345.357$

SKETCH 1:75 N

DEFINITION/DESCRIPTION of LOCUS (explain why you changed locus numbers):

Today's date: 14 July 2005Locus above: B3505Locus parameters: N boundary = N bank of B3508 ; S boundary = 1.20m from N bank ; E = line of stones along
W edge of room ; W = W bank

Verbal description:

Soil is fairly compact w/ medium sized cobblestones, fair amount of pottery and
bone - soil is brown in color - dense ~~in~~ matrix w/ the mentioned inclusions.Locus Interpretative Comments (What do you think this is? DATE your comments, continue on additional
pages if necessary):14 July 2005 - Mixture of possibilities - bedding/packing for walls B3503 + B3508,
possible floor surface ; a very compact slope wall.

Year

Trench/Locus

Excavator

[illegible]

OBJECTS

[illegible]

ADDITIONAL COLLECTED MATERIAL

[illegible]

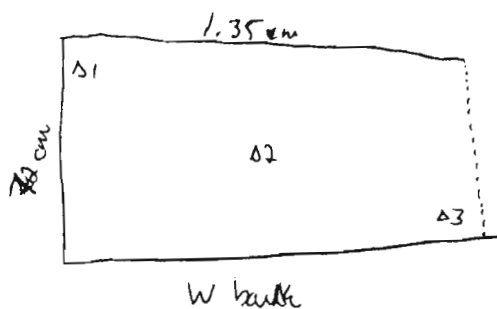
Year 2005 Trench/Locus B3515 Excavator DFM

DESCRIPTION of PROGRESS of EXCAVATION [date each entry and identify associated pottery find(s)]:

14 July 2005

due hopes of trying to figure out the possible relationship betw. ~~B3400~~ B3400 + B3500 and if the two walls B3503 + B3508 continue to the W bank, a small ~~excavation~~ pan was taken in the W end. - See sketch plan on next page. There was an apparent ~~lack~~ ^{or at least not anymore} of stones and it appears that the walls don't continue, nor is there a doorway. Resting upon a fairly flat lying stone was a quern fragment - Obj. #1 - $RG1 = 2.38$, 20 cm from W bank. There was a fair bit of pottery + bone for a small narrow strip. Midway through the pan, almost 15 cm betw. the walls of B3503 + B3508 a pillar base, roughly shaped, appeared and it looks to be in situ. Once the pan was completed, it was decided to extend the locus a little farther to the S: and so to see if any further clarification in the W end could be made. The pottery find associated w/ this is

B3515.2

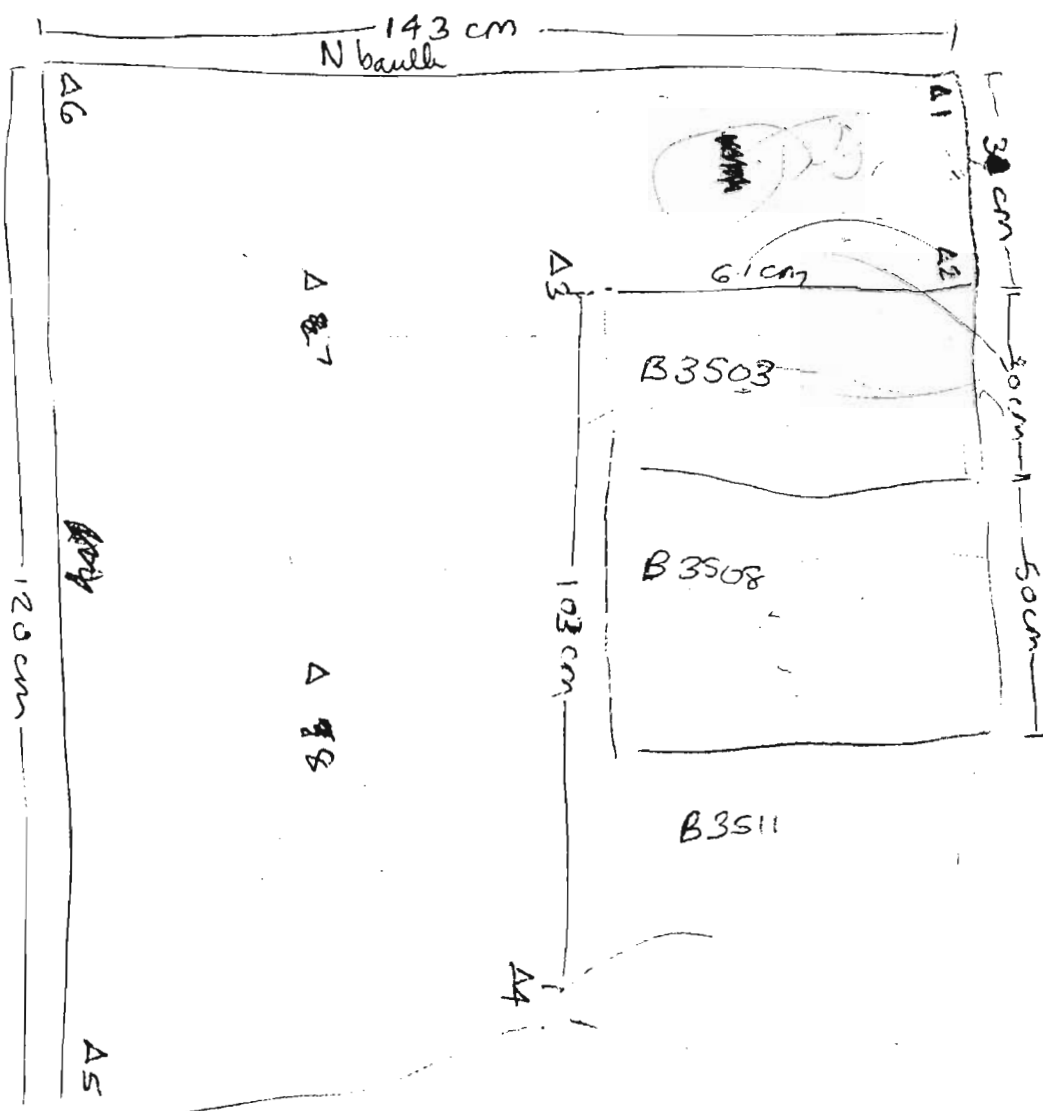


	$RG1 = 2.380$	$H. I = 348.206$
Top	$\Delta 1 = 2.771 = 345.435$	
	$\Delta 2 = 2.878 = 345.328$	
	$\Delta 3 = 2.909 = 345.237$	
Bottom	$\Delta 1 = 2.865 = 345.341$	
	$\Delta 2 = 2.928 = 345.278$	
	$\Delta 3 = 2.990 = 345.216$	

Unfortunately, besides a few stones heading into the W bank, it is unclear as to what is going on in the W end of B3500

DESCRIPTION of PROGRESS of EXCAVATION [date each entry and identify associated pottery pail(s)]:

14 July
2005


$$R_{G1} = 2.381$$

BOTTOM ELEVATIONS FOR B3S15-1

$\Delta 1 - 2.670$
 $\Delta 2 - 2.575$
 $\Delta 3 - 2.695$
 $\Delta 4 - 2.747$
 $\Delta 5 - 2.797$
 $\Delta 6 - 2.717$
 $\Delta 7 - 2.734$
 $\Delta 8 - 2.773$

44

$\Delta 1 - 2.700$
 $\Delta 2 - 2.705$
 $\Delta 3 - 2.855$
 $\Delta 4 - 2.812$
 $\Delta 5 - 2.865$
 $\Delta 6 - 2.875$
 $\Delta 7 - 2.861$
 $\Delta 8 - 2.850$

See locus
sheet

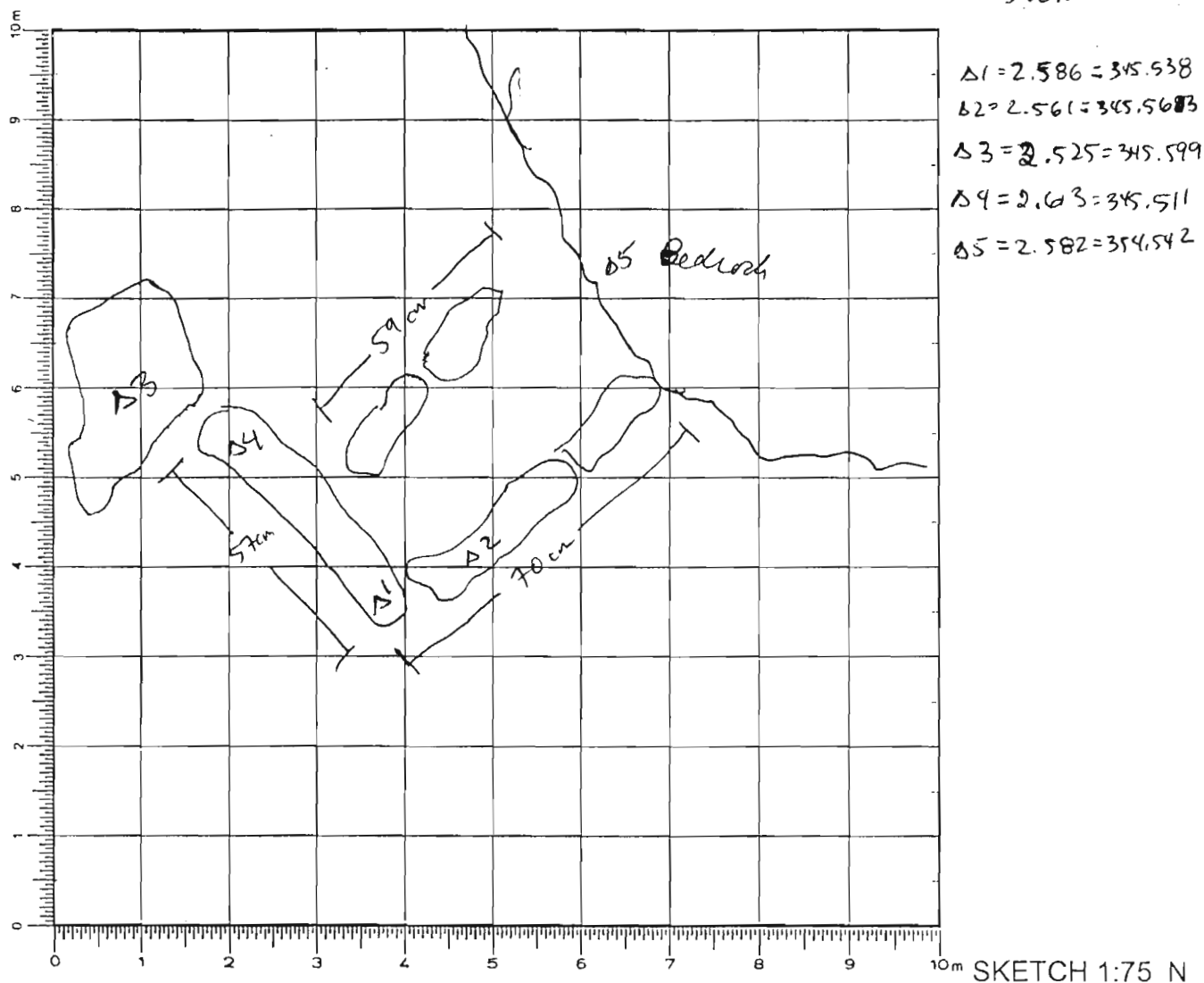
Year 2005 Trench/Locus ~~B3510~~ Excavator DFMB3516

← N

Elevations

Benchmark used: BG1

Reading on

Benchmark: 2.298H.I.: 348.124

DEFINITION/DESCRIPTION of LOCUS (explain why you changed locus numbers):

Today's date: 14 July 2005Locus above: B3513Locus parameters: See drawing

Verbal description: Hearth or bin composed of long thin stones, set in horizontal vertically, forming a rough square, using the natural outcrop of bedrock as its E edge.

Locus Interpretative Comments (What do you think this is? DATE your comments, continue on additional pages if necessary):

14 July 2005: It is unclear as to what exactly this feature is - it looks like a hearth, w/ a flat stone ~~used as~~ in the corner, used as a place to set hot things upon (?); yet there was no trace of burning in the two spaces on the stones or the surrounding areas. A bin of some type is also possible as its function but it is a rather small space & doesn't appear to go too deep.

p.2

p.2

p.2

p.2

p.2

p.2