

B3300 Final Report  
Azoria 2005  
EEG  
11 July 2005

B3300 is located on what was the terrace slope immediately west of B1700. It is to the immediate north of B1600 and to the northwest of B2900. It borders B2800, which is southeast. It is defined by three walls: B1605 in the south, the double faced B3305 and B3304 in the east, and B3307 in the north. There is no western wall yet. Approximate dimensions are 4.9 m on the north-south axis and 4.5 m on the east-west axis. The Archaic floor surface approaches all three walls, with dimensions of 4.9 m north-south and 3.2 m east-west. Excavation was carried out between 22 June and 08 July 2005. The monument used was R-13 (+352.13 masl).

The workmen for the trench were Manolis Grammatikakis, Nikolis Spiliarotis, and Iorgos Kanitakis. The trench assistants were Timothy Holt, Mikael Nielsen, David Sampson, and Heather Tulloch. Trench supervisor was Erin Galligan.

Pail List:

- Topsoil: B3301.1-3 (Hell, A, LMIIIC pottery) were the original topsoil pails of the trench. B3301.4 (LA, A, LMIIIC) is the northern extension, and B3301.5 (Hell?, LA, A, LMIIIC) is the western expansion.
- Slopewash: B3302 (Hell, LA, A, LG, LMIIIC)
- Soil & Small Tumble B3303.1-6 (Hell, LA, A, O, EO, LG, PG, LMIIIC)
- East Wall: B3304, B3304.1 (A)
- East Wall (slipped & partially removed): B3305, B3305.1-2 (Hell, LA, LG, LG & EO, LMIIIC)
- Large Tumble: B3306  
Along western edge of trench, B3306.4,6,7,8,9 (Hell, LA, LG, Geo, LG-EO, PG?, O, EO, LMIIIC)  
Eastern area of trench, B3306.1-3, 5 (Hell, LA, O, Early 5<sup>th</sup>, A, LMIIIC)
- North Wall: B3307, B3307.1-2 (A).
- Roofing clay, coming down on floor: B3308.1-4 (LA, A, O, LG-EO, LG, LMIIIC, FN).

Interpretations:

Very little cultural material was found in this room to indicate a function: perhaps it was cleared out when abandoned. Only one or two burning patches were found coming down onto the floor. A stone celt (B3302.1 Obj. 1) was found high in the tumble passes, and so may have washed down from B1700, which had many stone tools. A pyramidal loomweight was found, and in later wall cleaning a stone loom weight (Obj. 1 of B3308.5) was found. The built feature may be a hearth which was so disturbed by roots that part of it was removed as tumble. Lots of coarseware pottery was also found, but this also is likely washed down from above, as coming down onto the floor we had less cultural material than we did in the tumble. The olive tree also resulted in the poor preservation of floor along the western edge, and pushed B3304 and B3305 so far

forward that we had to remove the top two courses of B3305 for safety reasons, although these two walls probably were one double faced wall. The bedrock outcropping to the north of the eastern walls seems to be incorporated into it, and the hole that opens under it was filled in with stones. Certainly wall B1605 is a later addition, and B3307 is likely later as well. No western wall has yet been found.

N ←

B1710

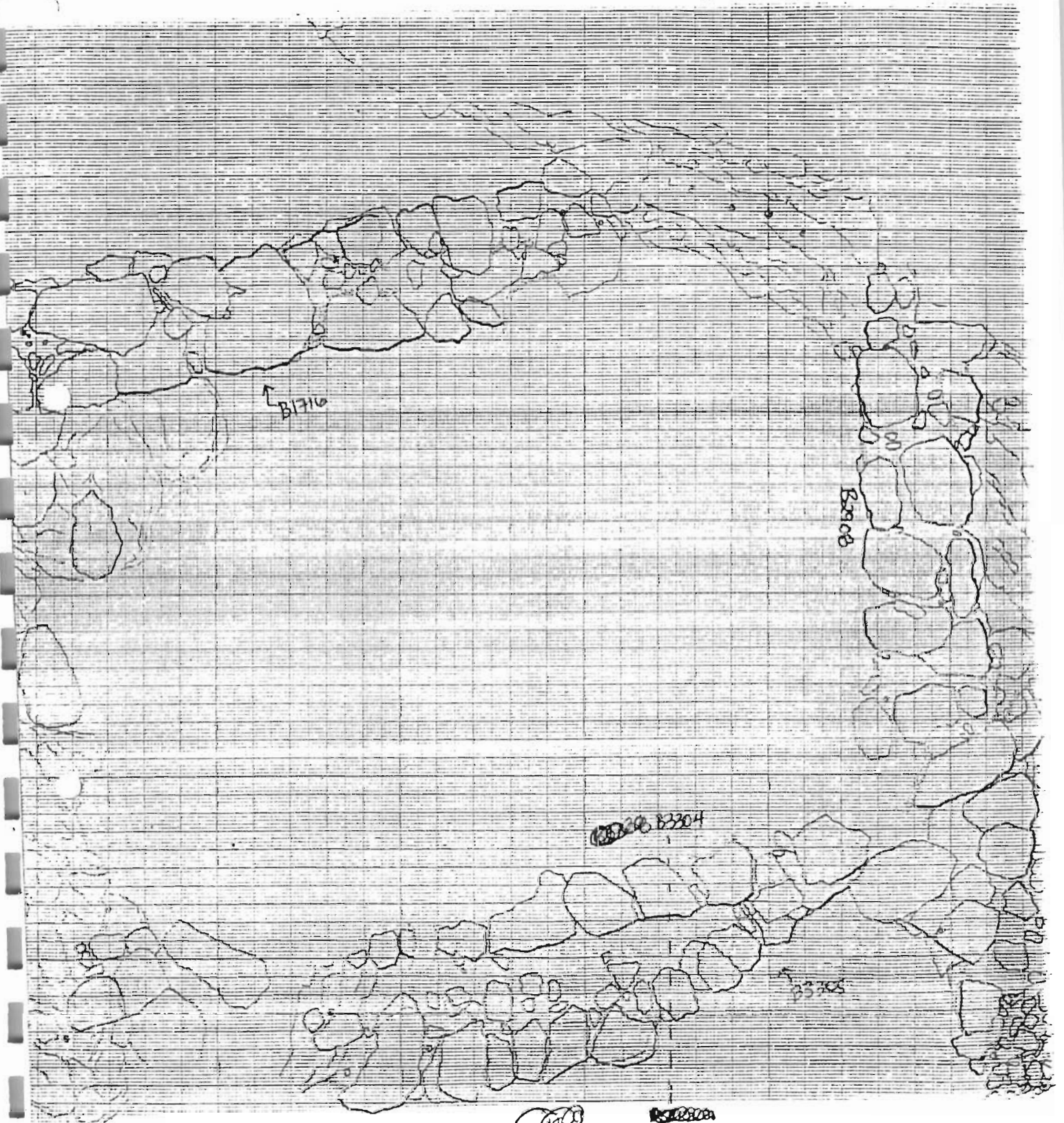
B3308

B3304

B3305

B3303

CROSS-SECTION  
B3300  
EAST-WEST





p.2

[illegible]

## OBJECTS

[illegible]

### ADDITIONAL COLLECTED MATERIAL

[illegible]

Year 2005 Trench/Locus B3301 Excavator EEG

DESCRIPTION of PROGRESS of EXCAVATION [date each entry and identify associated pottery pail(s)]:

22 June 05

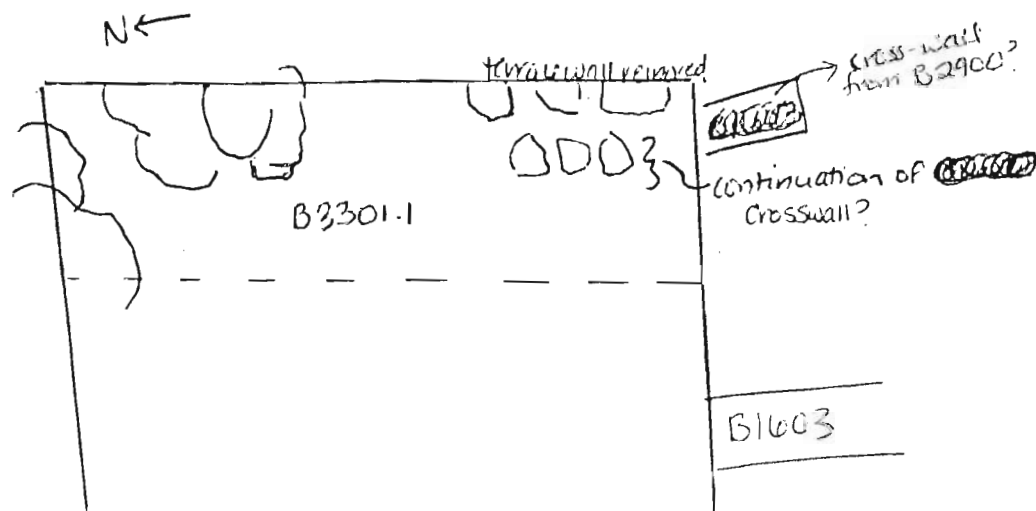
B3301.1

This morning we opened a new trench on the slope between the terrace of B1700 + B2800. The area is just west of the olive tree and west of B1700; north of B1600, and NW of B2900. ~~B2900~~ The goal of this trench is to see how the archaic rooms of B2900 + B1700, and the exterior space of B1600 relate to each other.

The first pail is a shallow pass through the topsoil across the eastern area of the trench, about 1m. wide. we are digging right under the terrace wall to see if it is ancient or modern. We are also looking in this area for a continuation of the crosswall from B2900 which would define the western edge of B1700's archaic room. ~~(B2900 is not a wall B1700)~~

This wall which has one stone from B2900 has not yet been named. Once we determined that the 6 large stones in the terrace wall were modern (they were sitting in fill + small stones), we removed them to look for the cross wall.

There are several large boulders still wedged under the olive tree, however they are at odd angles and not really in line to be a continuation of B1603. Further west several large rocks appeared which may be part of the wall. These 3 rocks appear approx. linear. ~~we saw~~ They were swept down + a new pass was started. Several pieces of bowl and a lot of (mostly coarseware) pottery were collected. Because it was topsoil no dirt was screened.



Year 2005 Trench/Locus B3301 Excavator EEG

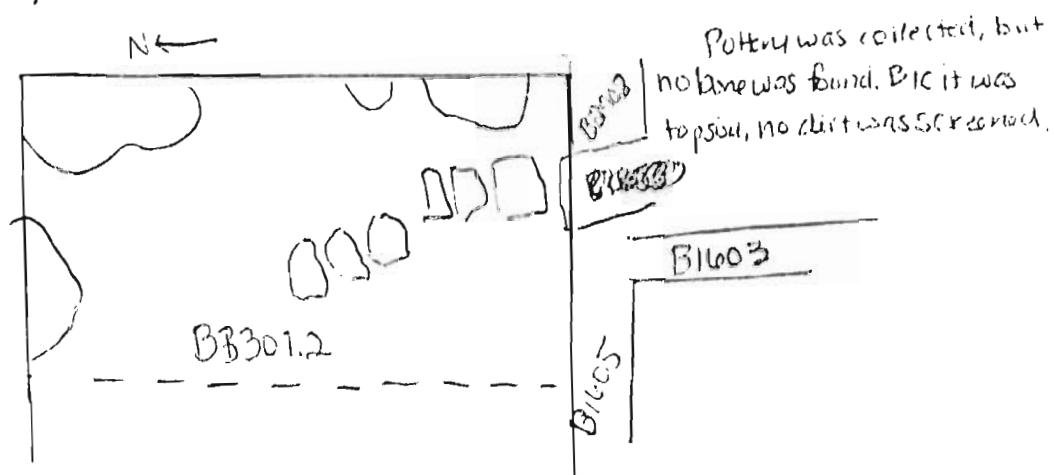
DESCRIPTION of PROGRESS of EXCAVATION [date each entry and identify associated pottery pail(s)]:

22 June 2005

B3301.2

After uncovering about 3 stones which look to be a continuation of N-S wall ~~B3301.1~~ <sup>from B2918</sup>, we began another pass into the far eastern strip of B3300. This pass is about 1/2 m farther west than B3301.1, in order to excavate ~~the~~ around the stones from west to east. We discovered even more rubble or wall to the west of the ~~B3301.1~~ original linear accumulation, which now includes about 6 stones.

- After the pass was completed, it appears that the southernmost 3 stones are flat and most in line w/ B1603, but the westernmost 3 have slipped a little and create an angle.



Year 2005 Trench/Locus B3301 Excavator EEG

DESCRIPTION of PROGRESS of EXCAVATION [date each entry and identify associated pottery pail(s)]:

23 June 05

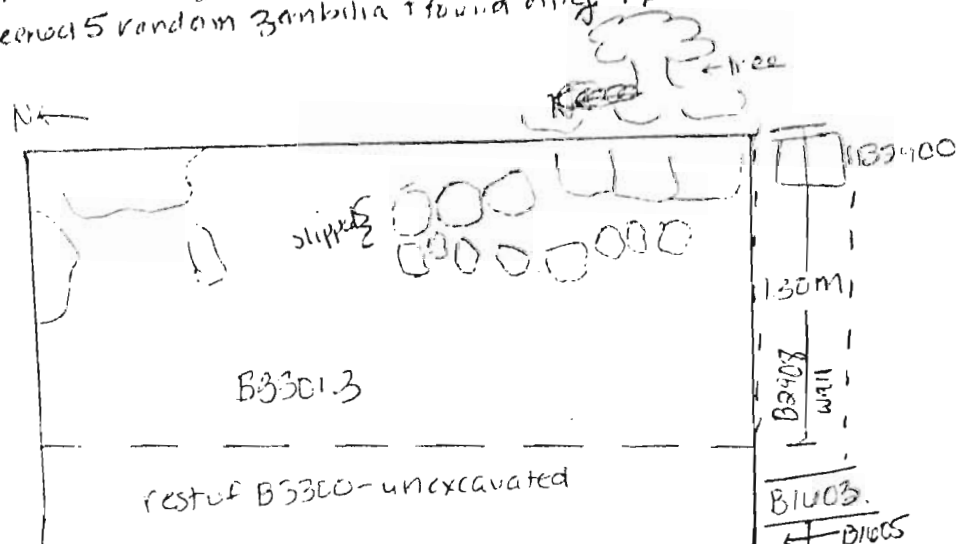
B3301.3

After the morning was devoted to terrace clean up on the lowest terrace and taking final elevations for B1700, we began another pass in the eastern half of ~~the~~ B3300 with the goal of exposing the western face of what appears to be a N-S crosswall that continues from B3900. ~~After the morning was devoted to terrace clean up on the lowest terrace and taking final elevations for B1700, we began another pass in the eastern half of the B3300 with the goal of exposing the western face of what appears to be a N-S crosswall that continues from B3900.~~ We began the pass from the west and moved east up to the rocks of the wall.

We are just now beginning to remove tumble so I did not change locus, but ~~we~~ we are screening 5 random Zambilia of dirt.

As we moved into the tumble, we uncovered another grouping of stones just to the west of the wall which is vaguely linear. There is a possibility that it is another layer of the wall, and so the stones were left in until we can see what they are resting on top of. However, because they are not quite linear, and some of them are not at flat angles, I think it more likely that they are tumble.

A sea pebble was found in the tumble. A standard soil sample was taken. We collected a lot of (mostly coarseware) pottery. No bone was found in the trench. We screened 5 random Zambilia & found only 1 piece of bone.



There are 3 stones at the ~~the~~ southeastern edge of B3300 that definitely look to be part of the wall. We were able to expose several continuities of the face of this wall, but it is uncertain how far north the wall continues, because at this stage it is still difficult to differentiate between tumble, wall, and slipped stones. It is possible that the wall ends with the northernmost visible slipped stone, to provide an entrance along the terrace into B1700's Archival room?



Year 2005 Trench/Locus B3301 Excavator EEG

DESCRIPTION of PROGRESS of EXCAVATION [date each entry and identify associated pottery pail(s)]:

29 June 05

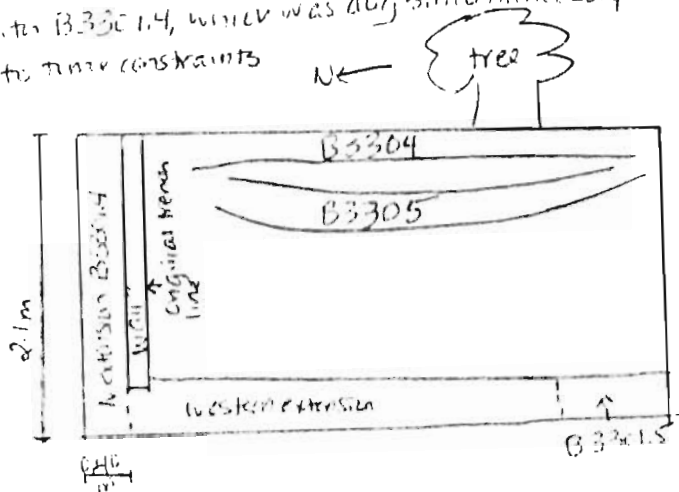
B3301.4

This is a pass through topsoil to extend the northern boundary of the trench in order to find the northern face of the northern wall that intersects B3304.

Blot was topsoil, dirt was not screened, but several sherds were collected.

B3301.5

Topsoil pass as western extension, approx 1.5m E-W, to find western wall in trench. Some pottery was collected - no bone was found. Pass began at southern boundary to avoid mixing dirt with B3301.4, which was dug simultaneously. The pass did not progress very far due to time constraints.



Year 2005 Trench/Locus B3300 Excavator EEG

DESCRIPTION of PROGRESS of EXCAVATION [date each entry and identify associated pottery pail(s)]:

30 June 2005

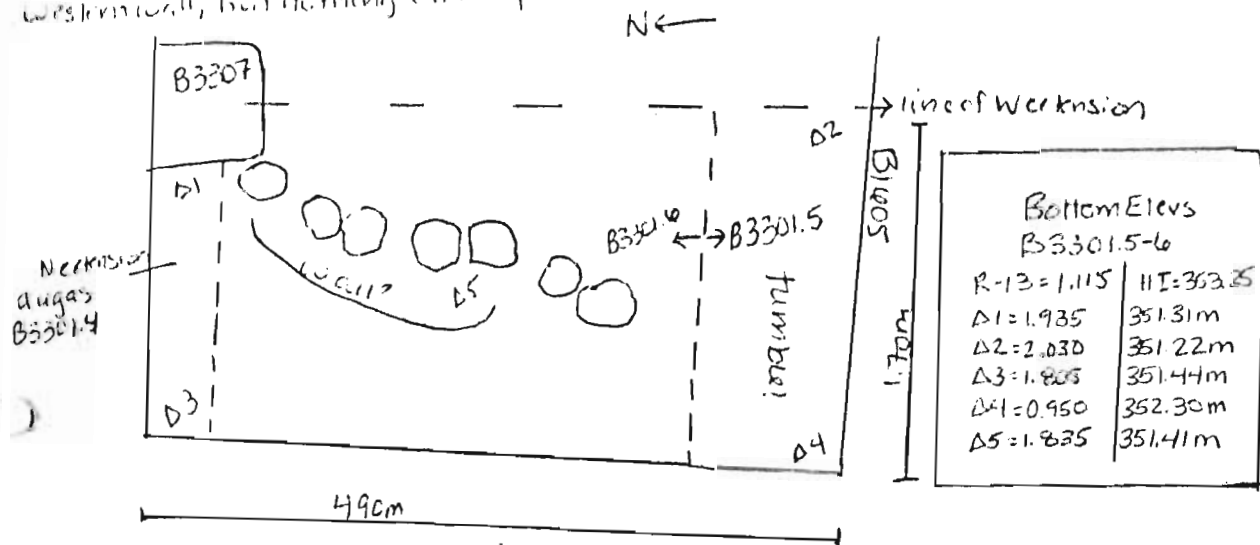
B3301.6

This morning we continued our pass through the topsoil in the western extension of B3300, in order to look for a western wall and take the level of the extension down to the current surface of the trench. The pass began at the southern end and moved north.

A stone tool, obj #1 was collected—a hemispherical/rounded stone hammer for approx 5-6 cm in diameter. It was found in the cleanup process so its exact location/elevations is unknown, but it came from the middle of the pass.

One or 2 pieces of bone were found, and a fair amount of coarseware pottery. Because it was topsoil, the dirt was not screened.

We found 4 stones in the northern area of the trench, which may be the western wall, but nothing clearly linear in the southern half.



# AZORIA Project

p.1

Year 2005 Trench/Locus B3302 Excavator EEG

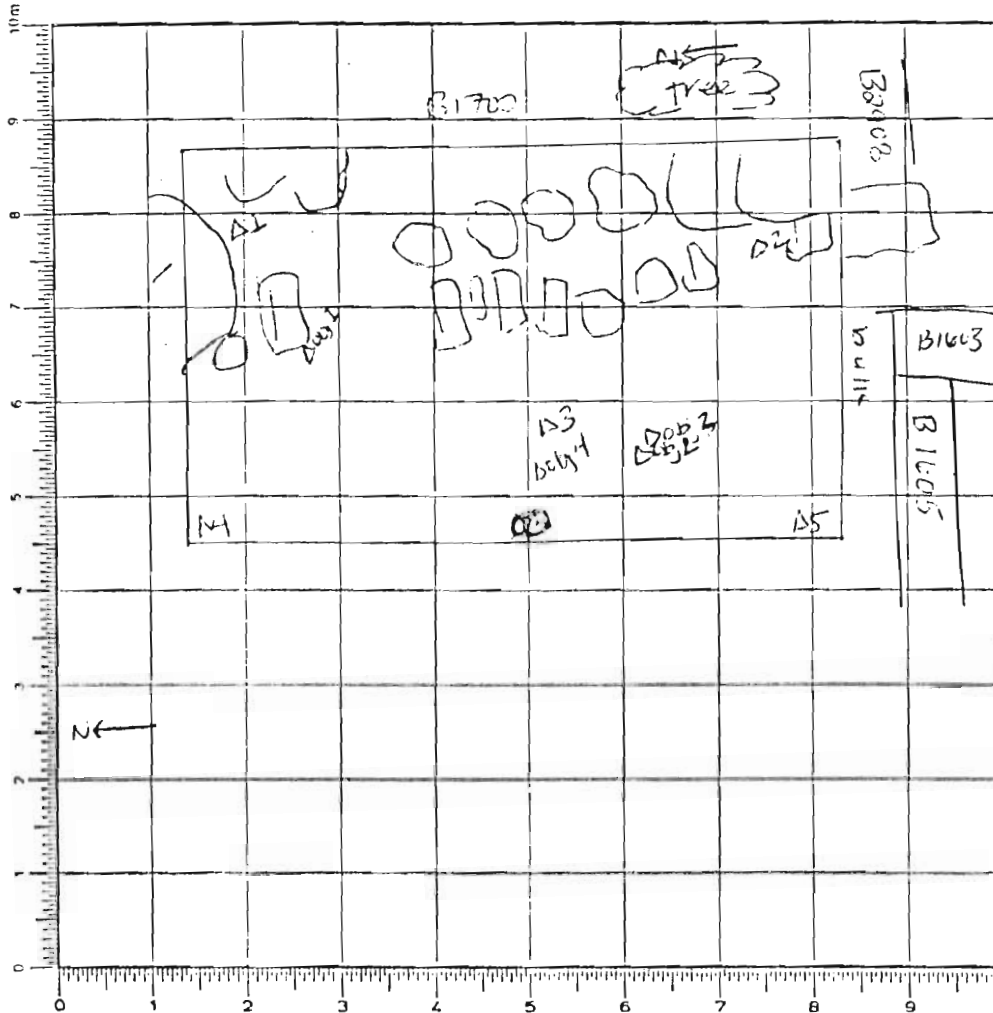
## Elevations

Benchmark used:

Reading on

Benchmark:

H.I.:



For top elevations,  
see bottom elevs of  
B3301 B

B3302.1

R-13 = 0.952

H.I. = 353.08

Adj 1 = 0.859 | 352.22m

Bottom Elev B3302.2

R-13 = 0.861

H.I. = 352.99m

Δ1 = 0.780 | 352.21m

Δ2 = 0.729 | 352.26m

Δ3 = 0.991 | 352.00m

B3302.3 H.I. = 353.04

R-13 = 0.955

Adj 2 = 1.191 | 351.90m

Adj 3 = 1.132 | 351.46m

Bottom Elev B3302.4

R-13 = 1.075

H.I. = 353.21m

Δ1 = 0.940 | 352.27m

Δ2 = 0.868 | 352.34m

Δ3 = 1.174 | 352.04m

Δ4 = 1.550 | 351.66m

Δ5 = 1.565 | 351.64m

B3302.5

R-13 = 1.048

H.I. = 353.23m

Adj 4 = 1.618 | 351.61m

SKETCH MAP

## DEFINITION/DESCRIPTION of LOCUS (explain why you changed locus numbers):

Today's date:

24 June 05

Locus parameters:

Approx 1.8m

Verbal description:

Rectangular area immediately west  
of B1700 and immediately north of B1600,  
northwest of B2900.

Dirt is loose, light brown with lots of stones

Locus above:

B3301 / changed locus #k although dirt is

similar to topsoil layer, we are moving  
into a layer of rubble with slightly  
more dirt.

Bottom Elev

B3302.5

Δ4 = 1.620 | 351.61m

Δ5 = 1.630 | 351.56m

R-13 = 1.078

H.I. = 353.23m

Locus Interpretative Comments (What do you think this is? DATE your comments, continue on additional pages if necessary):

24 June 05 topsoil  
# Slope wash

p.2

[illegible]

Object Number	Associated Pottery Pail	Identification (material/form)	Location	Elevation	Catalogue Number
1	B3302.1	stone tool	NE corner <del>W edge of trench</del>	352.22m	
2	B3302.3	part of stone queen part of stone	<del>W edge of trench</del> W edge	351.90m	
3	B3302.5	<del>stone tool</del> queen?	W edge of trench	351.96m	
4	B3302.5	stone tool	W edge of trench	351.91m	

[illegible]

Year 2005 Trench/Locus B3302 Excavator EEG

DESCRIPTION of PROGRESS of EXCAVATION [date each entry and identify associated pottery pail(s)]:

24 June 05

B3302.1

This morning we began another pass through the tumble in order to expose the western face of the N-S cross wall. We began the pass about 4m west of B3301.3 and moved east.

We immediately found several pieces of bone, which we found very little of in the previous few passes.

A stone tool (object #1) was found in the northern part of the pass, near the large rock (see diagram). It appears to be some sort of scraper? We took an elevation.

We also found a scapula around the same area.

We were able to take out a lot of small tumbled rocks as we approached the 7 rocks which may be part of the wall.

It became clear that the westernmost linear accumulation of stones is not resting on another course of stones. This fact plus the slightly odd bend in the line suggests that they are tumble, however, we will leave them in until we expose more of the tumble in the western part of the trench.

We did find, in line with the western stone group, another large rock, although this could go with either line of stones - it may have slipped a little from the eastern line. The rock next to the western line of stones does appear to be resting on a larger rock below, but the stones immediately to the south of this rock do not. The two lines of stones seem to converge at the newly uncovered large rock. So there is still a possibility that there are 2 walls, or one thick wall. (But I still think it is unlikely).

A lot of pottery was uncovered in this pass (mostly coarseware). As mentioned above, we found several pieces of bone in the trench. 5 random 30cm bins of dirt were screened, since we are digging through tumble, but no bone was found in the screen.

For pail diagram, see next page.

Year 2005 Trench/Locus B3302 Excavator EEG

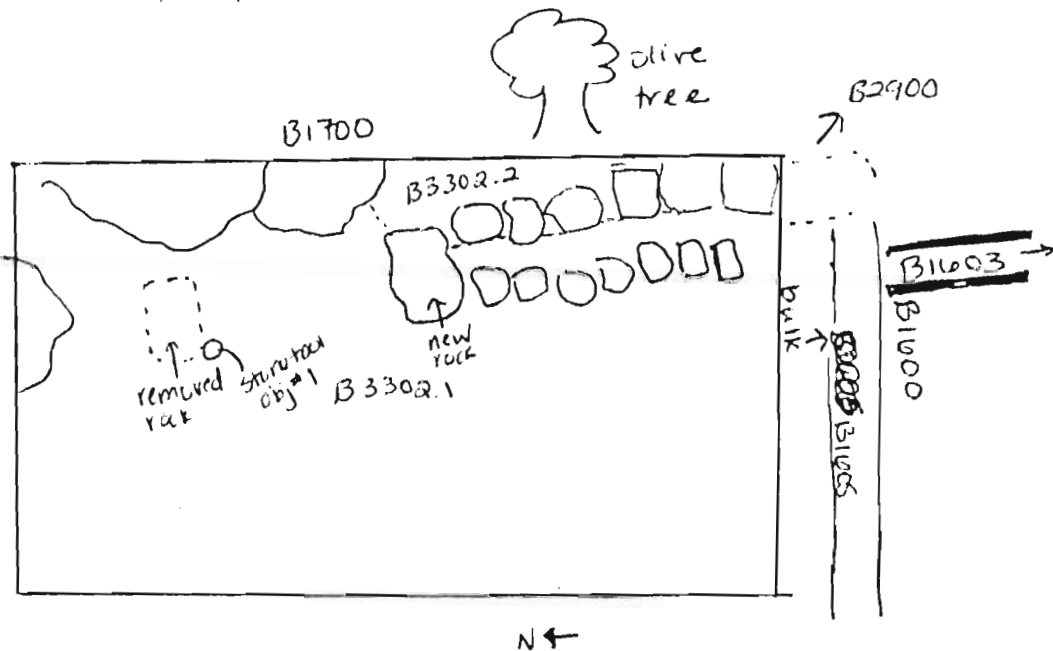
DESCRIPTION of PROGRESS of EXCAVATION [date each entry and identify associated pottery pail(s)]:

24 June 05

**B3302.2** This is part of the same pass as B3302.1, however we changed pails for the ~~the~~ eastern siver of the pass because.

- (1) This is the area ~~located~~ to the east of what appears to be the cross wall, so we wanted to isolate it from the area west of ~~the~~ this wall. And
- (2) This area is adjacent to B1700 + the tall bulk of the olive tree, so it is more likely to be easily contaminated with sherds from the terrace above.

No dirt was screened (there was very little dirt because the trench boundary is very close to the cross wall). Several sherds of pottery were collected.



Year 2005 Trench/Locus B3302 Excavator EEG

DESCRIPTION of PROGRESS of EXCAVATION [date each entry and identify associated pottery pail(s)]:

24 June 05

B3302.3

After completing a pass through the eastern half of the trench to expose the wall/tumble along the eastern boundary, we began a pass at the western edge of the trench, which will go all the way up to the eastern edge. The goal of this pass is to expose the tumble in the western area, which is very shallow (rocks are already poking out in places). In order to include some of the visible tumble, the western trench boundary was extended.

There was less tumble in the northern half of the trench, suggesting that the wall may not extend to the northern boundary of the trench.

Part of a stone quern (object #2) was found near the western boundary of the trench in the tumble. Another stone which is questionably part of the same quern was found just to the SE of the first piece and was sent in as object #3.

A good amount of pottery was collected - not as much as in the previous pass, but this pass was much more shallow. We also were unable to complete this pass all the way to the wall(s) at the eastern boundary due to time constraints.

5 random Zambilia of dirt were screened, but only one piece of bone was found. No bone was found in the trench.

Year 2005 Trench/Locus B3302 Excavator EEG

DESCRIPTION of PROGRESS of EXCAVATION [date each entry and identify associated pottery pair(s)]:

27 June 2005

B3302.4

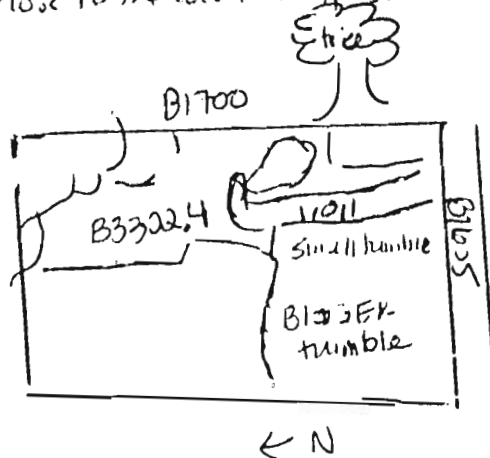
This morning we completed our pass to define the wall tumble in the eastern part of the trench up to the ~~western~~ <sup>southern</sup> face of the walls.

Because the volume of dirt was small, we did not screen - we screened 5 random Zambilia from the pass on Friday (24 June). We collected 1 piece of bone and a lot of pottery, especially for such a small area.

We were able to define a lot of tumble especially in the ~~western~~ <sup>southern</sup> half of the trench. It seems that the wall does not extend more north than the outcropping of borders ~~Down~~ in the NE corner.

- At this corner, some harder clay was found, but it did not really resemble roofing clay.

The tumble, especially just west of the possible walls, appears to be of small rubble-sized stones rather than blocks from a wall. However, there are some larger rocks at the western end of the trench, and it is possible that we've not dug deep enough close to the wall to expose the larger tumble.





Year 2005 Trench/Locus B3302 Excavator ECG

DESCRIPTION of PROGRESS of EXCAVATION [date each entry and identify associated pottery pail(s)]:

28 June 05

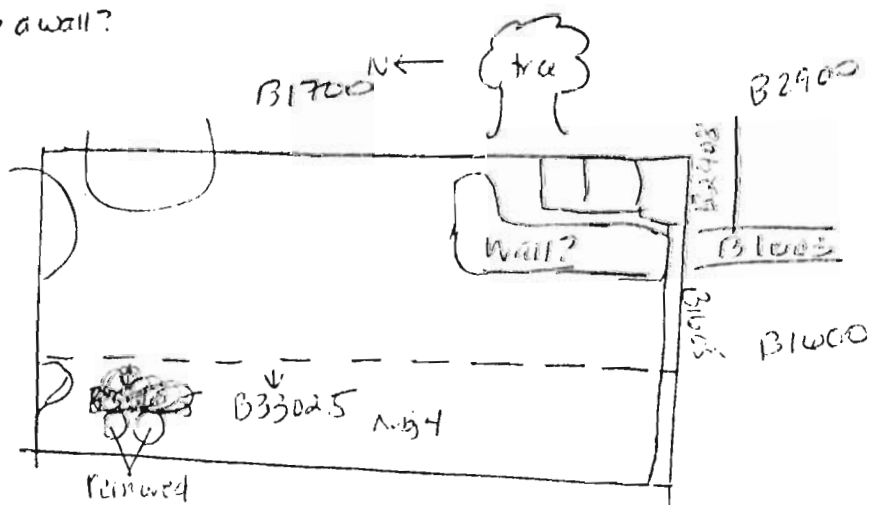
B3302.5

In order to remove possibility of pottery contamination this morning we took a pass through the western half of the trench, which is still topsoil. We were able to take out some of the smaller, coebly tumble. The pass began at the western end and moved east, spanning an E-W width of approx. 0.7m and a depth of approx 5cm.

Pottery was collected but dirt was not sieved. We found some smaller coarseware sherds, heavily eroded from being washed down slope, but less pottery than we are finding in the tumble above. There is less large tumble here, as well.

- 1) A rounded stone hand tool was found near the western boundary + sent in as object #3. Only one end of ~~the tool~~ was polished. Part of a sea pebble was also found (sent in as other - sea pebble).

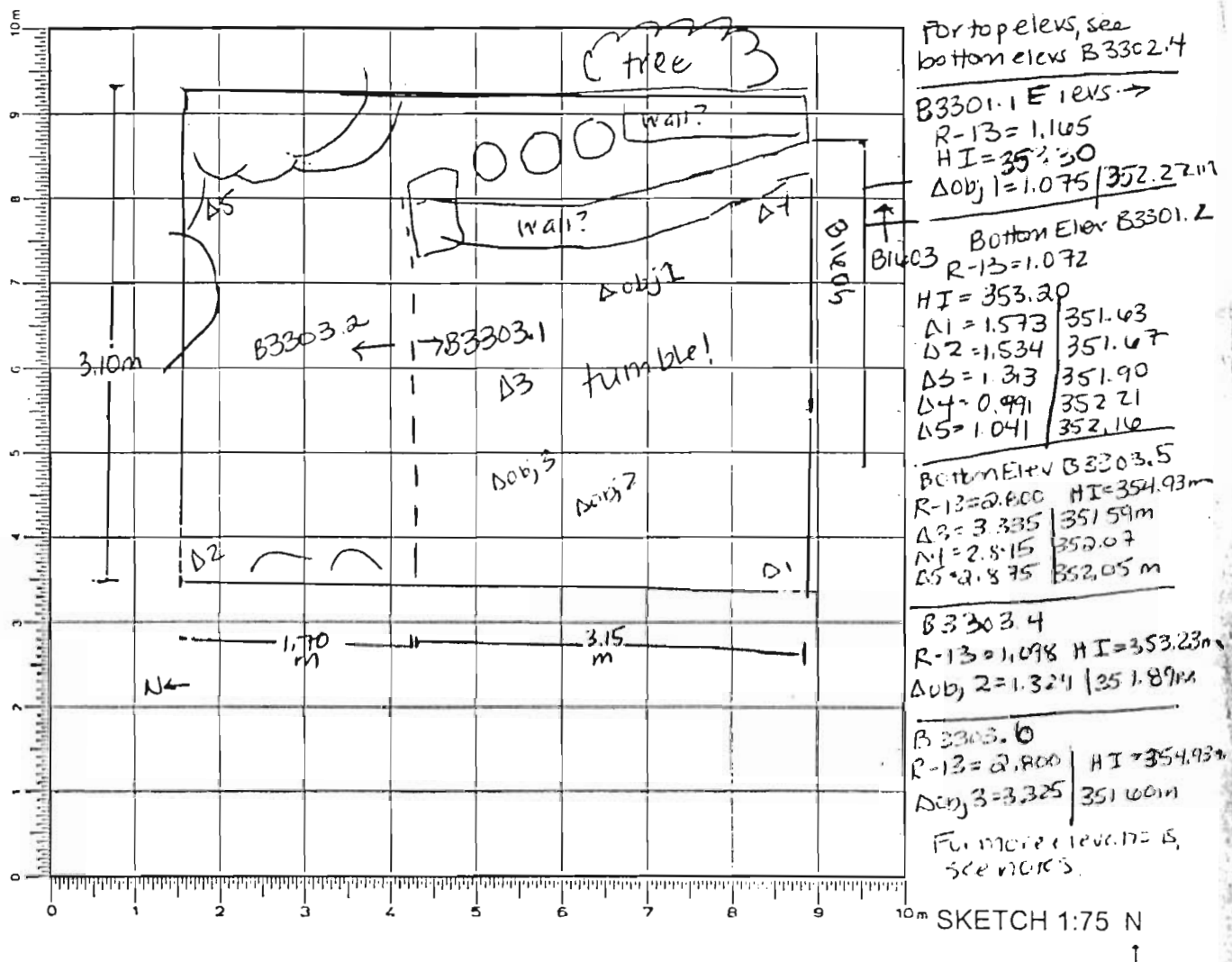
In the NW corner, we found 3 stones in a linear pattern. The southern 2 had to be removed b/c they were loose. The 3rd is still in the ground - maybe a wall?



Year 2005 Trench/Locus B3303 Excavator EEG

## Elevations

Benchmark used:  
 Reading on  
 Benchmark:  
 H.I.:



DEFINITION/DESCRIPTION of LOCUS (explain why you changed locus numbers):

Today's date:

Locus above: B3302

27 June 05

Locus parameters:

Approx 3 m x 5 m on terrace slope

Verbal description:

Trench has B1700 as eastern boundary &amp; 1.44 B1605 as southern boundary.

Trench is NW of B2900.

Locus <sup>was</sup> soft, light brown dirt w/ lots of tumble.

Locus Interpretative Comments (What do you think this is? DATE your comments, continue on additional pages if necessary):

27 June 05 tumble

# AZORIA Project

p.2

Year 2005 Trench/Locus ~~B3303~~ B3303 Excavator EEG

Locus/Pottery Pail Number	Weight of Sherds	Number of Sherds	Chronology & Comments
B3303.1	10.10 kg	210	HELL, LA, A, LM III C
B3303.2	3.20 kg	117	HELL, LA, A, LG-EC, LM III C
B3303.3	3.00 kg	24	HELL, LA, A
B3303.4	14.85 kg	337	HELL, LA, A, O, PG, LM III C
B3303.5	1.50 kg	46	LA, A, O?, LM III C
B3303.6	3.95 kg	130	HELL? LA, A, PG, LM III C
B3303.7	0.41 kg	25	A, O, LM III C
B3303.8	2.95 kg	127	LA, LM III C
B3303.9	2.95 kg	97	LA, LM III C
B3303.10	8.00 kg	212	LA, LG, LM III C
B3303.11	5.90 kg	166	LA, LM III C

## OBJECTS

Object Number	Associated Pottery Pail	Identification (material/form)	Location	Elevation	Catalogue Number
1	B3303.1	terracotta loom weight	W of possible wall	352.22m	
2	B3303.4	stone tool	Wedge of terracotta	351.89m	
3	B3303.4	stone tool	Wedge of terracotta	351.60m	
4	B3303.4	spindle wheel	LINE	LINE	

## ADDITIONAL COLLECTED MATERIAL

Locus/Pottery Pail Number	Bones	Shell	Carbon	Pumice	Soil Sample	Other (specify)
B3303.1	1					
B3303.2						
B3303.3						
B3303.4						
B3303.5						
B3303.6						
B3303.7						
B3303.8						
B3303.9						
B3303.10						
B3303.11						See p.64

Year 2005 Trench/Locus B3303 Excavator EEG

DESCRIPTION of PROGRESS of EXCAVATION [date each entry and identify associated pottery pail(s)]:

27 June 2005

B3303.1

This morning after we finished defining the tumble in B3302.4, we began our pass at the western edge of the trench to take out ~~the~~ the first of the tumble.

We were able to take out a lot of the tumble in the southern half of the trench, and define better the face and corner of B1605 w/ the possible wall. We were also able to uncover some larger tumble to the west of the possible walls, which look more promising than the smaller stones uncovered in the last pass.

Dirt was not screened, but pottery was collected. We are still finding a lot of redware pottery. B/c we are still so high up in the tumble and do not have a floor yet, it is possible that these are storage vessels ~~which~~ which have washed down the slope, possibly from the ceramic room of B1700 above and to the east. If so, with the stone to the west and the working surface, there may have been storage jars for a food preparation area.

It was further discovered that the westernmost possible wall is not resting on another course.

A heavy weight, Obj 411, was found near the westernmost possible wall.

The northern section of the trench was excavated separately b/c there was less tumble, in pail B3303.2. It appears that the wall did not extend to this half. Pottery was collected, less than in the southern half (even less proportionally, though the northern pass has a smaller surface area). Dirt was again not screened for drawing of pail boundary, see locus sheet.

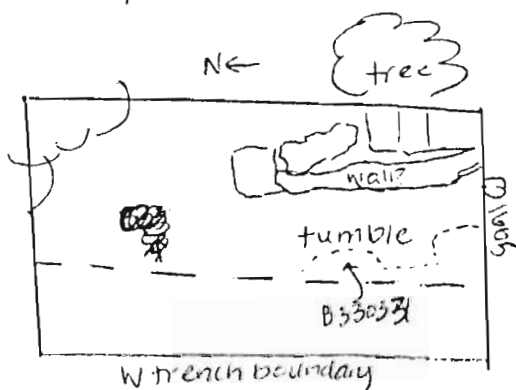
Year 2005 Trench/Locus B3303 Excavator EEG

DESCRIPTION of PROGRESS of EXCAVATION [date each entry and identify associated pottery pile(s)]:

2-7 June 05

B3303.3

This afternoon we began another pass to remove tumble, beginning in the middle of the trench, farther east than the last pass, because that is where the tumble starts. A fair amount of pottery was collected, but the pass did not progress very far b/c of time.



We continue to find a high amount of coarseware pottery - it seems that there were storage facilities either here as a room, or above, which have washed down.

Year 2005 Trench/Locus B3303 Excavator EEL

DESCRIPTION of PROGRESS of EXCAVATION [date each entry and identify associated pottery pail(s)]:

28 June 05

B3303.4

After a pass to lower the west edge of the trench, we continued the pass started yesterday in B3303.3. We are moving through soft, light brown dirt and lots of cobble-sized tumbled, which we are removing. The pass began at the western boundary of the pass, ~~and ended at the eastern boundary of the pass.~~

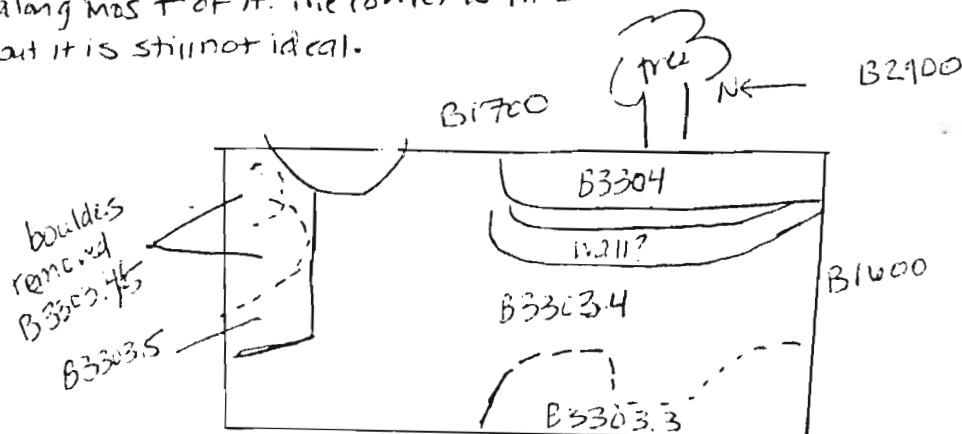
Almost immediately at the west edge of the pass, a large chunk of pumice was found. Along the western edge, a ~~large~~ possible stone tool was found - may be part of a quern, now fragmented? It was similar to obj #2.

We removed in this pass the large boulder in the north east corner of the trench, and a slightly smaller boulder to the east of it. Because part of the boulder was pedestalled on a lot of dirt, this area was higher. We therefore collected the pottery from this corner as pail B3303.5, and dug down to even it out. The removal of the boulder created a hole partially north of the trench boundary. This was also cleaned, so some pottery may have been collected from there as well.

~~B3303.4~~

B3303.4 yielded so much pottery that we used 2 large soil sample bags. Again, it is mostly coarseware.

The westernmost possible wall now extends from B1605 in the south all the way to the outcropping of bedrock at the north with 2 visible courses. Along most of it. The corner with B1405 also looks a little ~~cleaner~~ neater, but it is still not ideal.



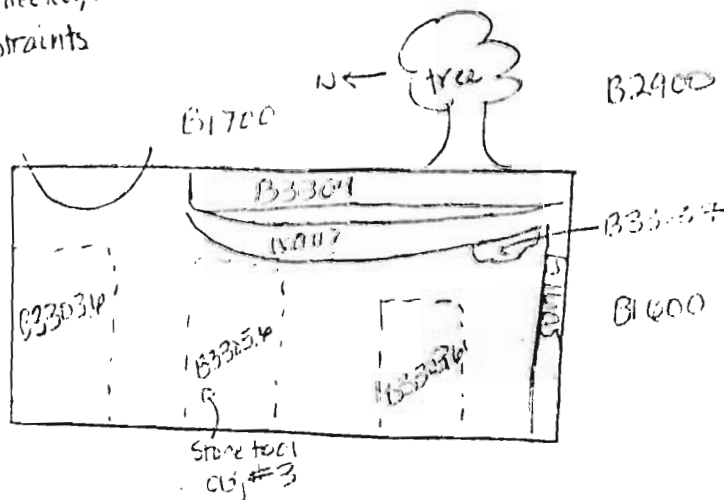
DESCRIPTION of PROGRESS of EXCAVATION [date each entry and identify associated pottery pail(s)]:

28 June 05

B3303.7 This is a small pit to try to reveal a face + corner on the possible wall (West of B3304) in the SE corner of the trench. It looks like a lot of slipped stones are wedged in this corner, + finding a clearer face will better solidify that this is a wall or part of B3304. A line course was discovered ~~near~~ just north of the corner. Some pottery was collected - it seems that the corner has slipped and there are sherds tucked under the stones. Some bone was also found.

2. B3303.6 We began another pass beginning at the western bounding of the trench to remove more tumble.  
Near the western end of another round ~~stone~~ stone hand tool was found - object #3 - stone tool.  
End of entry (conscience) The pass was not finished

#3 - 3 items total.  
Some bone was collected, as well as a lot of pottery (earthenware). The pass was not finished due to time constraints.



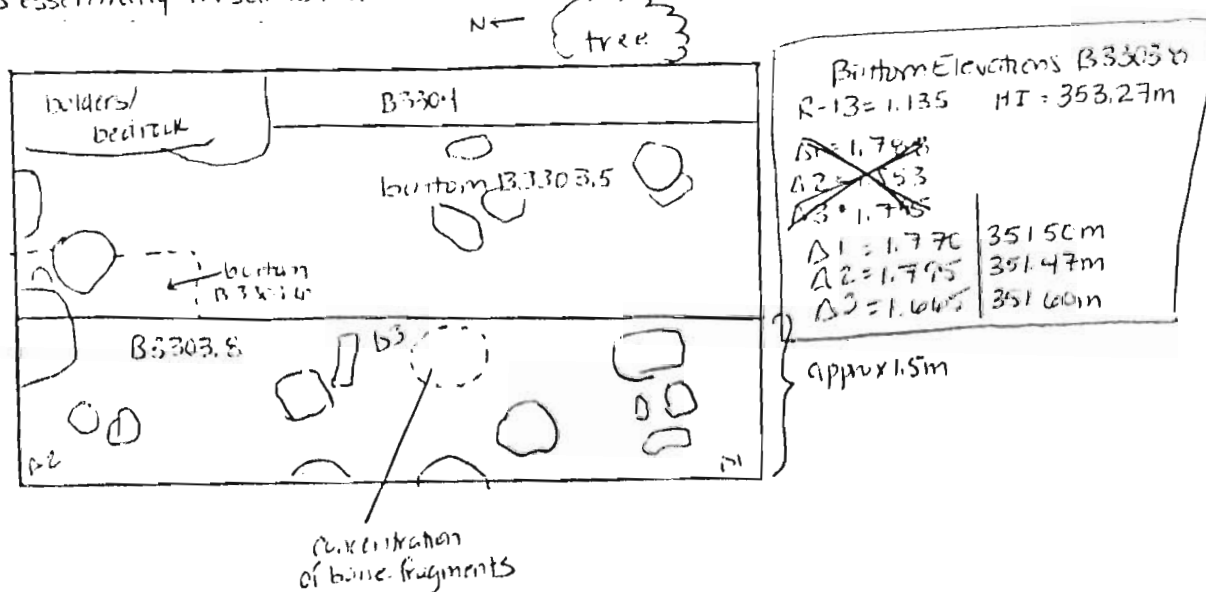
Year 2005 Trench/Locus B3303 Excavator EEG

DESCRIPTION of PROGRESS of EXCAVATION [date each entry and identify associated pottery pail(s)]:

29 June 05

B3303.8

This morning before finishing the pass started yesterday in B3303.6, we began a pass through the western ~~to~~ area of the trench, about 1.5m wide E-W. The purpose of the pass was to create a clean bulkline on the western boundary and so reduce pottery contamination. Although the surface of this western area was uneven from the pass begun yesterday, we evened it out in the area of the pass, collecting it all in the same pail w/c it is essentially the same material - small tumble + soft, light brown, loose dirt.



Bone was collected at the western edge a piece of jawbone was found, and there is a higher concentration of bone in the middle as noted on the diagram. A lot of potteryware pottery is still being pulled up. We uncovered several pieces of large wall tumble interspersed by smaller tumble. We are going to take another pass.

B3303.9

This pail is another pass in the western edge of B3303, again about 1.5m E-W. A lot of smaller tumble was removed, but some large tumble was left in. There is in the northern area of the trench 3 stones (not all immediately adjacent) which may line up to be a wall. There is a smaller row of stones, again in an E-W direction, at the southern end of the trench, which are adjacent and may line up with several rows further east, outside of the pass. These stones are parallel with and less than 1m. from B3303, so possibly they are linear tumble. But we are definitely digging through architectural tumble now.

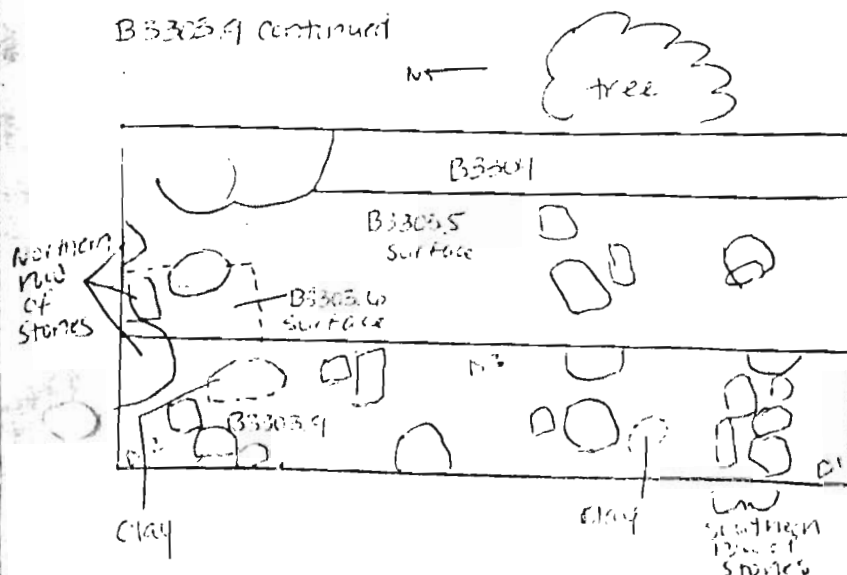


Year 2005 Trench/Locus B3303 Excavator EEG

DESCRIPTION of PROGRESS of EXCAVATION [date each entry and identify associated pottery pair(s)]:

29 June 05

B3303.9 continued



One larger piece of bone and several smaller pieces were collected. Not quite as much pottery was collected as in the pass above - it is still coarseware but the sherds are generally smaller.

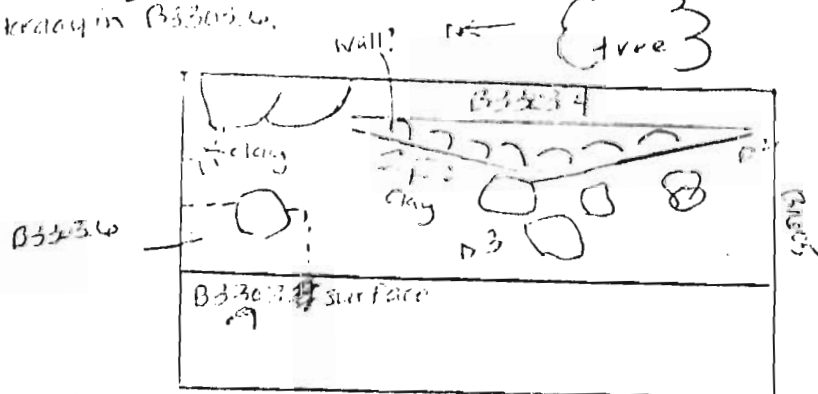
Some patches of clay were also found in this pass, as noted

on the diagram, ~~1.5m~~ 1.5m. Maybe roofing clay?

Bottom Elevations B3303.9  
 R-13=1.135 HI=353.27m  
 A1=1.782 351.48m  
 A2=1.853 351.42m  
 A3=1.995 351.47m

**B3303.10**

After cutting a clean bulk in B3303.9, we ~~will~~ began to finish the pass started yesterday in B3303.6.



We once again collected a large amount of coarseware pottery and several pieces of bone.

The western possible wall does not yet have an inner wall - either it is buttressing out or it has slipped west. In the northeast corner we have several borders next to each other but this has not yet been defined very clearly. The dirt around these rocks is supporting a large border above it.

Bottom Elevs B3303.10  
 R-13=1.135 HI=353.27m  
 A1=1.259 353.01m  
 A2=1.178 353.09m  
 A3=1.495 351.82m

# AZORIA Project

p. 7

Year 2005 Trench/Locus B3303 Excavator EEG

DESCRIPTION of PROGRESS of EXCAVATION [date each entry and identify associated pottery pail(s)]:

29 June 05

B3303.10 ctd

Never mind! Ronald is not afraid of boulders! We now have the entire northern wall top revealed, although the corner of the N + E walls is still obscured. It appears that the bedrock chunk was incorporated into the wall as an extension of B3304 + B3305. Although the western wall may originally have been part of B3304, it has slipped enough that I am calling it B3305.

We also have a little bit of cracking clay at the bottom of this pail - just west of B3305 there are several patches, and in the NE corner by the northern wall, but there is not clay uniformly along the bottom of this pail.

Year 2005 Trench/Locus B3303 Excavator EEL

DESCRIPTION of PROGRESS of EXCAVATION [date each entry and identify associated pottery pair(s)]:

30 June 05

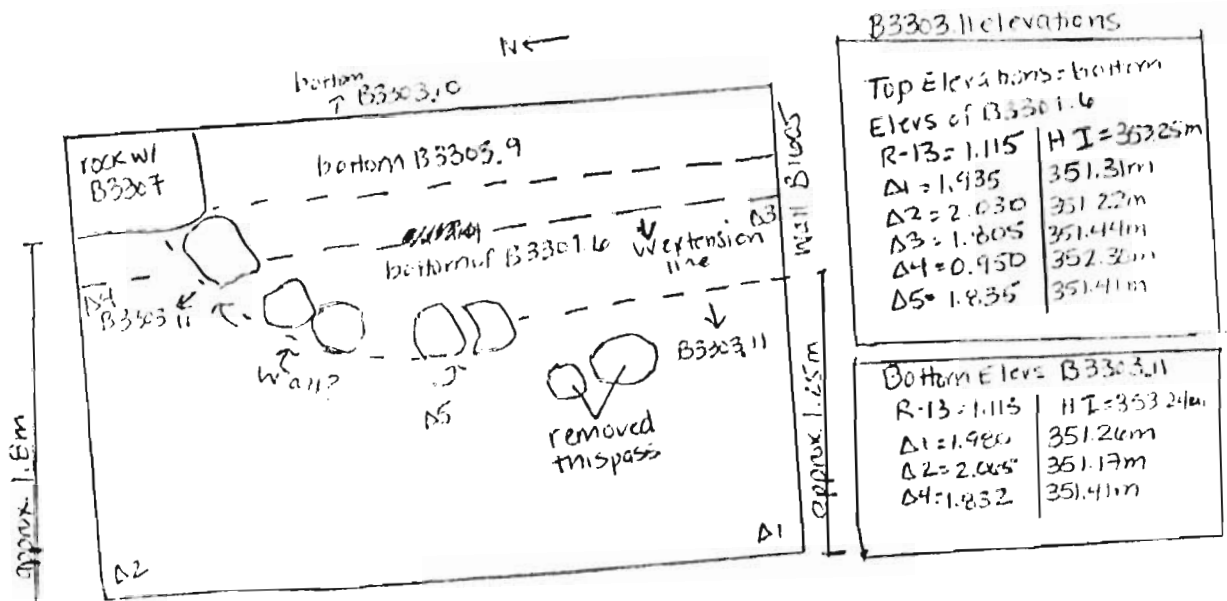
B3303.11

After completing the topsoil locus of the western extension in B3301.4, we began another pass through the western part of the western extension, digging up the "face" of what might be the western wall in the north half, and an arbitrary straight line in the south half.

Finds include a sea pebble and some coarseware pottery, but not as much as is found in the tumble layers farther east in the trench. The dirt here is light brown loose with small, cobby tumble.

It was determined that at least 2 stones that could have been part of the wall are tumble - they are sitting on small tumble.

We still have no western wall for our room.



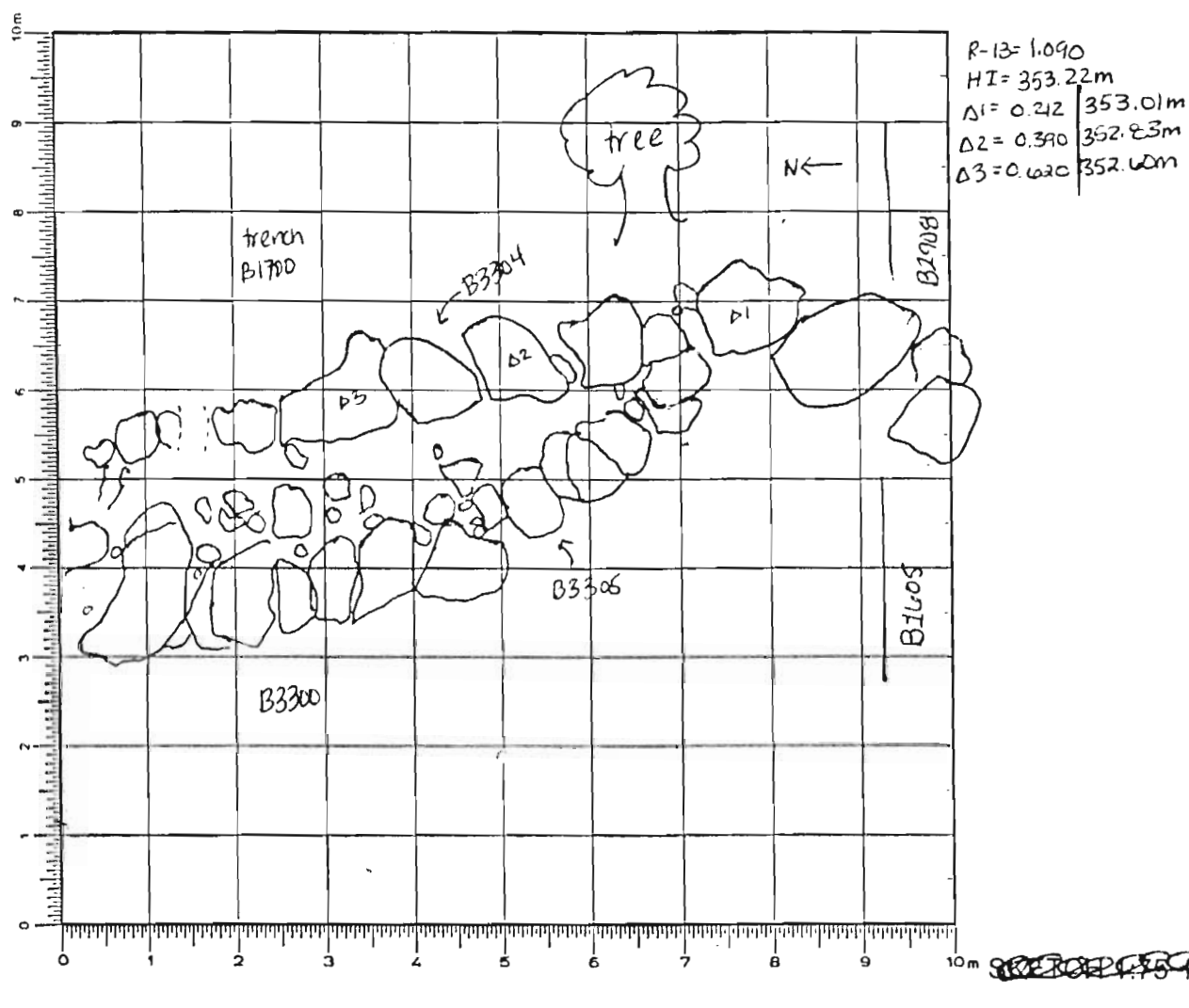
Year 2005 Trench/Locus B3304 Excavator EEG**Elevations**

Benchmark used:

Reading on

Benchmark:

H.I.:

DEFINITION/DESCRIPTION of LOCUS (explain **why** you changed locus numbers):

Today's date:

28 June 2005

Locus above: none-harming the wall

Locus parameters:

Approx 1.25m long (N-S)

Verbal description:

N-S wall, possible western boundary of ~~an~~ archaic surface in B1700.

Maybe 2 faces, with west face slipped.

Locus Interpretative Comments (What do you think this is? DATE your comments, continue on additional pages if necessary):

Year 2005 Trench/Locus B3304 Excavator EEL

[illegible]

## OBJECTS

[illegible]

ADDITONAL COLLECTED MATERIAL

[illegible]

Year 2005 Trench/Locus B3304 Excavator EEG

DESCRIPTION of PROGRESS of EXCAVATION [date each entry and identify associated pottery find(s)]:

28 June 05

~~Estn~~ B3304.1

This morning we removed 3 slipped stones from B3304 in hopes of exposing a lower course which has not slipped. Another stone underneath was also removed b/c it had slipped.

We found several pieces of carbon in between the 2 rows of stones, sent in as a carbon sample. Several small sherds of pottery were collected.

We were able to expose at least 1 more row to the north which is a continuation of the wall, and 2 more that are still hard to determine. We also found 2 smaller stones that were on top that seem to have slipped at an angle. But it appears that the eastern row of stones is definitely a wall, so it was named B3304.

We found several pieces of bone in cleaning & removing more of the small stones from the wall.

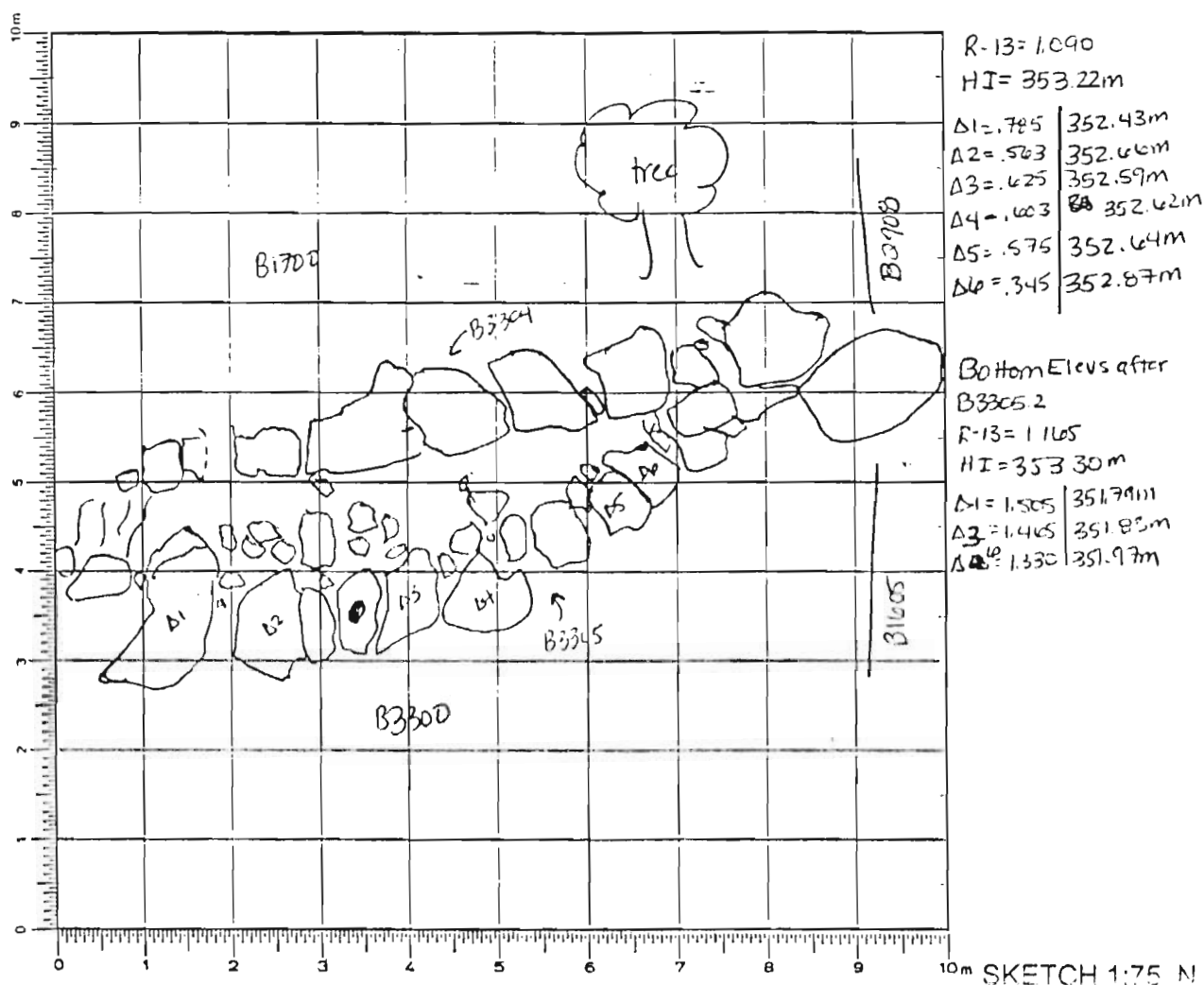
Year 2005 Trench/Locus B3305 Excavator EEG**Elevations**

Benchmark used:

Reading on

Benchmark:

H.I.:



DEFINITION/DESCRIPTION of LOCUS (explain why you changed locus numbers):

Today's date:

30 June 05

Locus above: none - naming the wall

Locus parameters:

Approx 1.25m long (N-S)

Verbal description:

N-S wall west of B1700 and in east of B3300. Possibly the western face of a wall continuing from B3100 (which is to the south). Wall bows in the center to the west, from slope - it is on a slope & just west of the olive tree.

Locus Interpretative Comments (What do you think this is? DATE your comments, continue on additional pages if necessary):

[illegible][illegible][illegible]



Year 2005 Trench/Locus B3305 Excavator EEU

DESCRIPTION of PROGRESS of EXCAVATION [date each entry and identify associated pottery pail(s)]:

01 July 2005

This morning, B3305 was photographed + drawn so that it can be removed + B3304 can be clarified.

B3305.1

This is the removal of at least 2 courses of stones that have slipped forward, in order to find the bottom courses + determine whether or not it is a part of B3304, or a separate wall.

Some small pottery sherds were collected from between B3304 + B3305, and ~~they are not from B3305~~ a good deal of bone.

The dirt between the walls is light brown + hard packed, a lot like topsoil.

1) A piece of pumice was also found between the walls.

2) A small piece of shell was found + placed in the same bag.

A sea pebble was found + sent in as another sea pebble.

As the pass progressed further east up to B3304, several more sea pebbles were found + sent down in the same bag.

Only 1 stone was found that might be a lower course of B3305.

We found in 2 places a lower course of B3304, ~~but~~ but the wall has slipped to the west fairly steeply.

Year 2005 Trench/Locus B3305 Excavator EEG

DESCRIPTION of PROGRESS of EXCAVATION [date each entry and identify associated pottery pair(s)]:

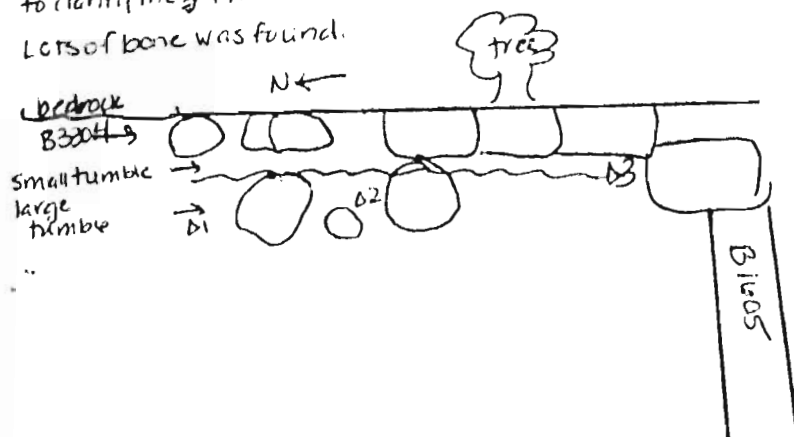
04 July 05

**B3305.2** This morning we continued the pass begun on 01 July 05 to remove most rocks had already been removed, and the dirt needed to be cleaned, and taken down to the level of the rest of the trench.  
 A piece of pumice, approx 8 cm diameter was found at the western edge of the dirt that the wall was resting on. More sea pebbles were also found.  
 We removed the 3 remaining stones at the S corner of B3305, and the 2 stones directly under them.

We had expected there to be another row of stones under B3305 but further east, but this does not appear to be the case.

A sea shell was found 1 sent in in the bone bag.

In the NE corner of the wall, it seems to be resting on tumble - it will be difficult to clarify the intersection of this wall with the bedrock.  
 Lots of bone was found.



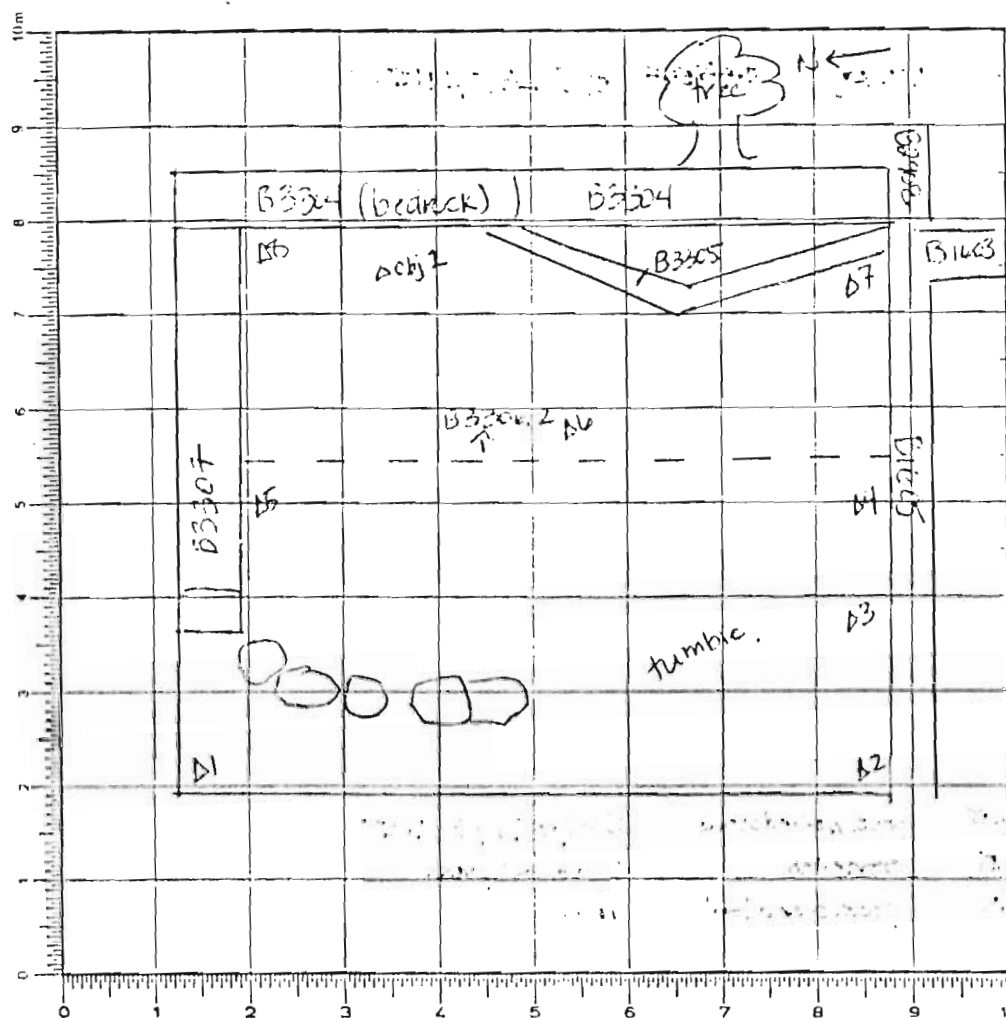
## Bottom Elevs B3305.2

R-13=1.1105	H I=353.30m
A1=1.505	351.79m
B2=1.465	351.83m
C3=1.330	351.97m

Year 2005 Trench/Locus B3304 Excavator EEG

### Elevations

Benchmark used:  
Reading on  
Benchmark:  
H.I.:



For top elevs, see bottom elevs of 03305.10.

$R = 3306.2$   
 $R - 13 = 1.115$   
 $1 + I = 353.25m$   
 $\Delta_{adj} = 1.392 \mid 351.86m$   
 (synchronous wheel)

Bottom Elevations after

B3304.7	
R-13=1.122	
HI=353.25m	
$\Delta 1=2.240$	351.01m
$\Delta 2=2.048$	351.20m
$\Delta 3=1.900$	351.35m
$\Delta 4=1.735$	351.51m
$\Delta 5=1.518$	351.43m
$\Delta 6=1.802$	351.45m
$\Delta 7=1.530$	351.72m
$\Delta 8=1.472$	351.81m

For object el-  
ements, see notes.

SKETCH 1:75 N

DEFINITION/DESCRIPTION of LOCUS (explain **why** you changed locus numbers):

Today's date:

Locus above:

29 June 15

B3003 - presentisana roofing clay

Locus parameters:

Verbal description:

Rectangular woven enclosure B3364/B3365 on the east + B1300, and B3005/B3006 on the west. Enclosure with a utility shed at the north.

Somebody's president & family, plus a little nothing, say

Locus Interpretative Comments (What do you think this is? DATE your comments, continue on additional pages if necessary):

# AZORIA Project

p.2

Year 2005 Trench/Locus B3306 Excavator EEG

Locus/Pottery Pail Number	Weight of Sherds	Number of Sherds	Chronology & Comments
B3306.1	1.12 kg	29	LA, LM IIC
B3306.2	9.05 kg	<del>225</del> 544	Hell? LA, D, LM IIC
B3306.3	8.30 kg	225	Hell, LA, Early ST, A, LM IIC
.4	6.43 kg	219	Hell, LA, LG-EO, Geo, LM IIC
.5	5.25 kg	222	Hell, LA, LM IIC
.6	1.12 kg	33	LA, LM IIC
.7	7.50 kg	101	Hell, LA, D, LM IIC
.8	3.77 kg	70	LA, PG?, LM IIC
.9	0.60 kg	24	LA

## OBJECTS

Object Number	Associated Pottery Pail	Identification (material/form)	Location	Elevation	Catalogue Number
1	B3306.2	spindle wheel	NE corner	351.86m	
<del>2</del>	<del>B3306.3</del>	<del>stone tool</del>	<del>W of B3305</del>	<del>unk</del>	
2	B3306.5	poss. worked stone	S edge, by B16.05		
3	B3306.5	stone tool	S 42. of pass		
<del>4</del>	<del>B3306.5</del>	<del>poss. stone tool</del>	<del>unk</del>		
4	B3306.7	terracotta hammerhead	unk. in pottery pit	unk	

## ADDITIONAL COLLECTED MATERIAL

Locus/Pottery Pail Number	Bones	Shell	Carbon	Pumice	Soil Sample	Other (specify)
B3306.2	2 bags	in bags			1 std	
B3306.3	1				1 std	sea pebbles
.4	1				1 std	
.5	2			1	1 std	sea pebbles
.6						
.7						
.8	1					

Year 2005 Trench/Locus B3300 Excavator EEG

DESCRIPTION of PROGRESS of EXCAVATION [date each entry and identify associated pottery pail(s)]:

29 June 05

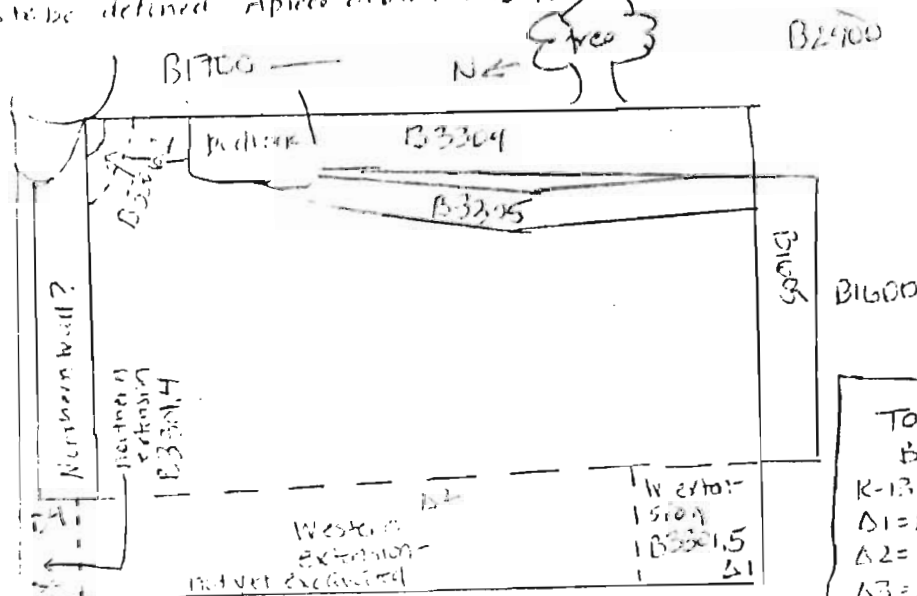
B3300.1

Because of the roofing clay in the NE corner of the trench, we are searching for this level pass, to define the intersection of B3304 - the northern wall. The corner was filled with tumble which needed to be removed. We found the correct object.

At the same time we took a pass B3301.4 through topsoil at the northern end to extend the northern boundary, in order to find the northern face of the northern wall. Some pottery sherds were collected from this pass. The extension is approx. 35m wide N-S. A little bone was found, and a sea porcupine.

We then extended the western boundary of the trench approx 1m in order to find the western wall. This extension ends just west of where B1605 ends. We took a pass through the topsoil there as B3301.5

B3300.1 - the wall appears to have a lot of tumble on top of the east end, and the corner is not yet completely distinct. The tumble was removed, but the northern face especially still needs to be defined. A piece of pottery was found.



Top Elevations B3301.4-5	
R-13 = 1.141	HI: 353.27m
A1 = 1.503	351.4m
A2 = 1.769	351.50m
B3 = 1.947	351.32m
B4 = 1.754	351.49m

Year 2005 Trench/Locus B3300 Excavator EEG

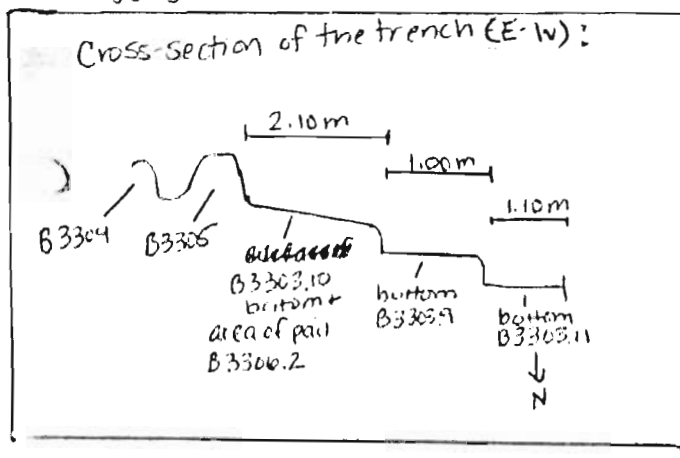
## 0 DESCRIPTION of PROGRESS of EXCAVATION [date each entry and identify associated pottery pail(s)]:

30 June 05

B3300.2

We began a pass through the eastern half of our trench, beginning at the western edge of the surface of B3303.10, which is ~~4m~~ higher than the surface of B3303.9 - I wanted to cut down the height of B3303.10 before digging through B3303.9 surface, although they will both be the same locus.

Cross-section of the trench (E-W):



Because of the presence of some roofing clay (but not a lot - mostly it was tumble + loose dirt) we began screening - we also had enough people for it. We found a lot of small bone fragments in the screen, and several larger pieces of bone were found in the trench. We are also still finding a lot of coarseware pottery, though not as much as in previous passes.

We are finding some tumble under B3305 - it seems that the wall tumbled and then B3305 slipped over it - otherwise our wall bottoms out in the tumble stratum without a floor.

~~Apr~~ A lithic shell was found & put in the bone bag. A standard soil sample was taken of dirt randomly selected through the pass.

Especially towards the wall, as the pass moved east, we noticed more fineware pottery than we normally been encountering.

It became clear that under the 2nd course of B3305, this slipped portion of the wall is floating on dirt - it will need to be drawn & removed.

Near the NE corner, a spindle ~~was~~ whorl - object #1.

DESCRIPTION of PROGRESS of EXCAVATION [date each entry and identify associated pottery pair(s)]:

B3304.3 This morning we began a pass at the western edge of B3303.9's surface, moving east towards B3305 + B3304. Because we are now in larger tunnels, I call this part of B3304.

Plot of large tumbles in the western area of the pass was removed, including what was before thought to possibly be the western wall. As we moved further east into the tumbles we hit several very small patches of grey-green (non-fing) clay.

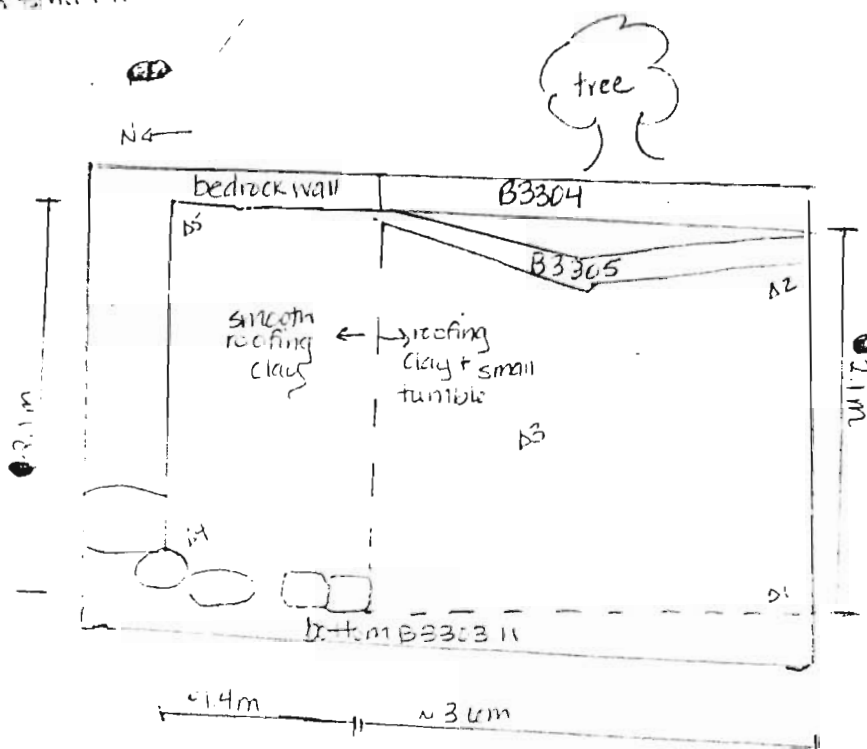
Along the north side of the pass, just south of B3307, along strip of clay was discovered. This is the area where the bedrock forms the wall + so there is less trouble. But the clay is very evenly preserved here.

A standard soil sample was taken.

A standard soil sample was taken. A rounded stone hand tool, approx 7 cm ~~long~~ <sup>long</sup>, was found in the cleanup process, sorts exact location/elevation are unknown, but it came from the eastern area of the pass, near B's site. A soil probe was also found near the W side of B's site, and was sent in as other - see below.

Again, a lot of bone was found in this pass, as well as overstore parking. Still we are finding more fireware than in the previous passes.

finding more kinward than in the previous pass -  
Past the bridge - 1/2 mile, ~~2000~~ south of this the roofing clay becomes roofing clay  
with small tumble



Top Elevs = Bottom Elevs +  
B3306.2

R-13 = 1.000	
HI = 353.13m	
L1 = 1.382	351.75m
L2 = 1.130	352.00m
L3 = 1.400	351.47m
L4 = 1.630	351.50m
L5 = 1.310	351.82m

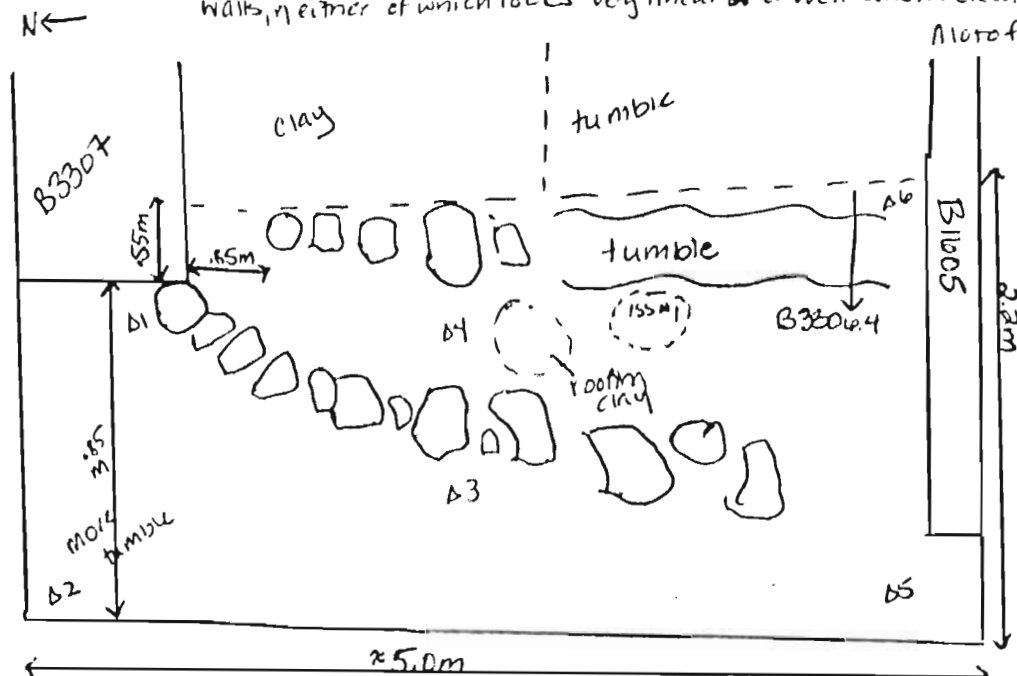
Bottom Elevs B3306.3:

R-13 = 1.110	
HI = 353.24m	
L1 = 1.435	351.80m
L2 = 1.230	352.01m
L3 = 1.550	351.69m
L4 = 1.775	351.40m
L5 = 1.410	351.82m

DESCRIPTION of PROGRESS of EXCAVATION [date each entry and identify associated pottery pair(s)]:

04 July 2005  
B3300.4 This afternoon we began a pass through the tumble, beginning at the western edge of the trench boundary, in hopes of finding roofing clay. Since we already have a smooth clay surface in the NE corner of the trench, this area was not included in the pass. We found a sea pebble near the northwestern corner, and several pieces of bone. We found some carbon, or possibly burnt clay, at the eastern boundary of the pass. It was sent in as ISS #1 - Sid Quadrant of B3300.

A small patch of roofing clay was found between the two candidates for the western walk, neither of which looks very linear or well-constructed.



f Pottery was collected, as well as a little bone.

We were unable to clarify which is the western wall, or if there is even a western wall.

Bottom Elys. B3306.4	
R-13 = 1.165	H I = 353.3 m
$\Delta 1 = 2.050$	351.25 m
$\Delta 2 = 2.165$	351.13 m
$\Delta 3 = 2.140$	351.16 m
$\Delta 4 = 1.935$	351.36 m
$\Delta 5 = 2.090$	351.21 m
$\Delta 6 = 1.995$	351.30 m

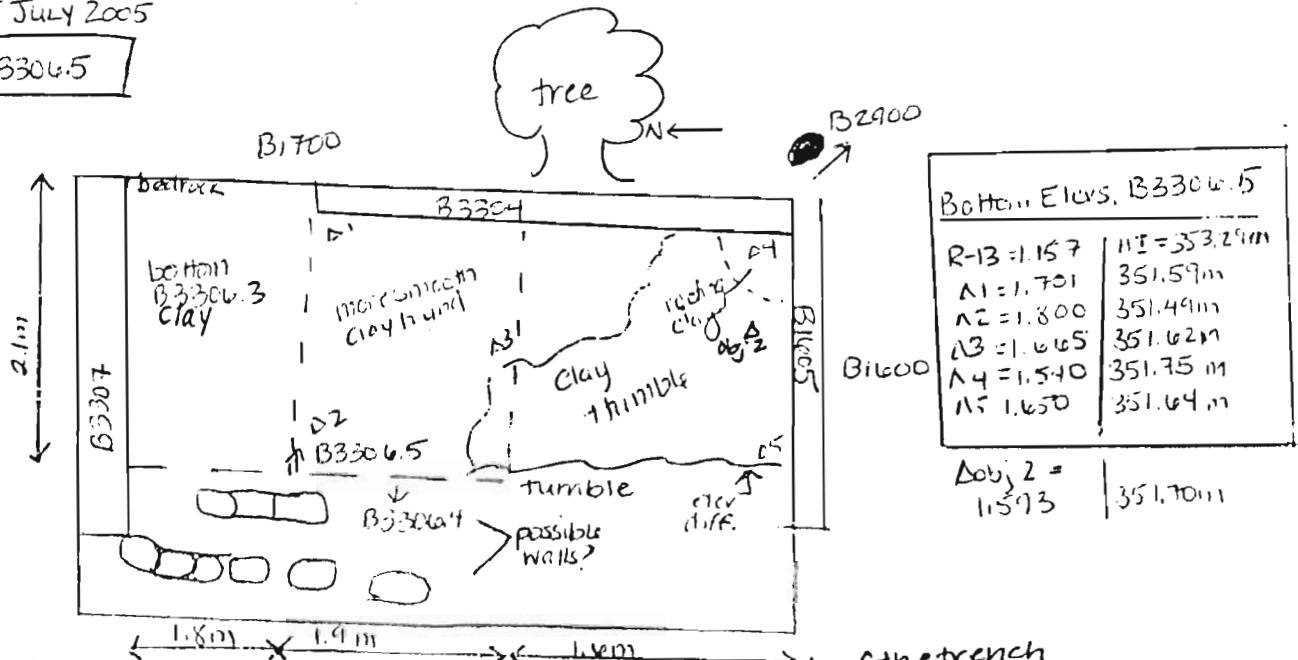


Year 2005 Trench/Locus B3300 B3304 Excavator EEB

DESCRIPTION of PROGRESS of EXCAVATION [date each entry and identify associated pottery pail(s)]:

05 July 2005

B3304.5



This morning we began a pass through the southeastern part of the trench to remove the tumble + try to expose a clay surface. The pass began at the western edge of the pail boundary as indicated on the diagram.

Object #2, a possible worked stone was sent in - it is flat, broken at one end, and has several lines which may be incised. It was found very close to wall B1605. Object #3, stone tool, was found in the cleanup process so its exact location/elevation are unknown - it is sort of a hemispherical hand tool, approx 9 cm, which may also have been part of a stone quern, now broken. It came from the southern half of the pass. Object #4 also looks to be broken off from a quern, though it is a little rough. This was sent in as possible stone tool. Its diameter is approx 6 cm. Again, it was found in the cleanup process, its elevation + location w/in the pass are unknown.

The northern half of the pass had tumble that was mostly cobble-sized, and a smooth clay surface was found that is free of tumble. This ~~area~~ surface of clay extends east all the way to the tumble of wall B3304.

Pumice + sea pebbles were also found + sent in, and a standard soil sample was taken.

In the southern half of the pass we uncovered more tumble mixed w/ clay. But both walls B3304 + B1605 continue deeper, and roofing clay was found in the SE corner of the trench at the intersection of these two walls, very green/grey in color.

We screened 5 random zembilia and found several pieces of bone. In the trench we found a good amount of bone from the "usual suspects," as Lynn says - pig, cow, sheep. We also found a good deal of pottery, though less than in previous passes, with lots of coarsware, but several nice pieces of fine ware.

We removed a large root that was sticking through B3304 by saw, so as not to disturb the already slipped wall further. There is a small hole at the bottom of B3304 in the SE corner - hopefully the wall will pick up again. The trench was swept + photographed.

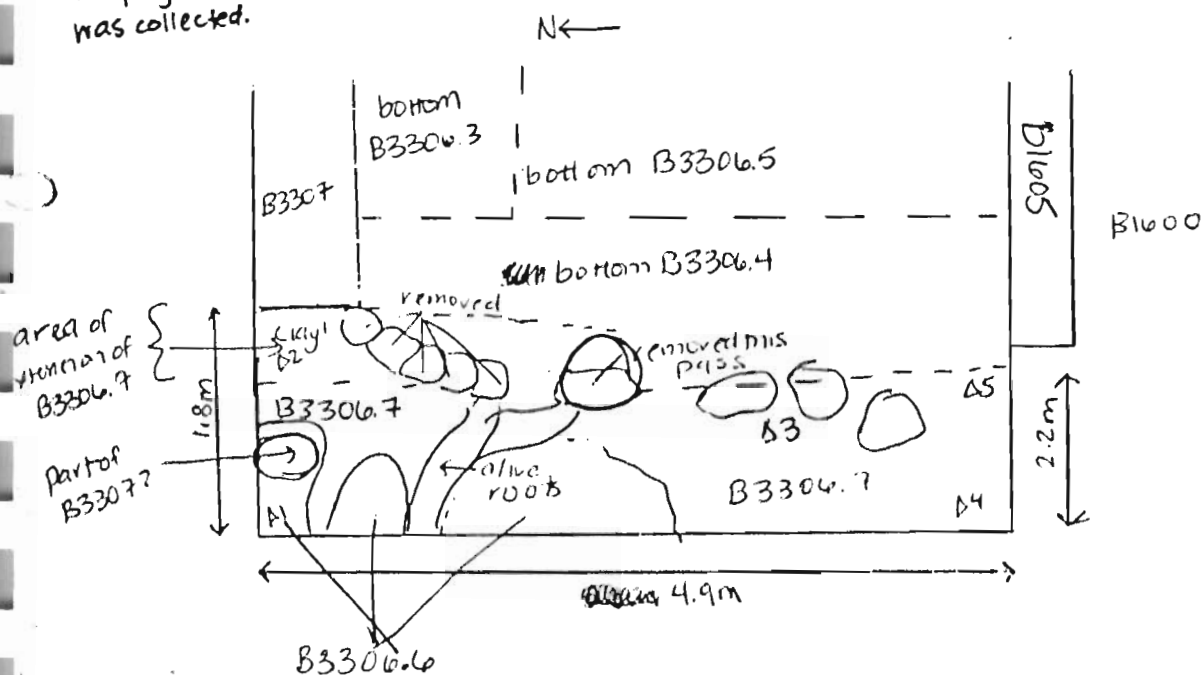
DESCRIPTION of PROGRESS of EXCAVATION [date each entry and identify associated pottery pail(s)]:

05 JULY 05

B3306.6

This afternoon we began a pass at the western edge of our trench up to the possible wall in the east, in order to remove more of the smaller tumble + hopefully expose underneath some architectural tumble or even clay. The pass did not progress far due to time constraints, but a fair amount of mostly coarseware pottery was collected.

N ←



B3306.7

06 July 06

B3306.7] 06 July 68  
This morning we continued the pass that we began yesterday, continuing it up to the eastern boundary of the pass as indicated on the diagram. We removed the possible cardinal direction three small stones were sitting on cobbles + dirt. We then extended the pass a bit further east to expose the clay slope where the stones were resting on cobbles.  
Found a little bit of bone.

Lots of archaic pottery was found, and a little bit of bone.

lots of archaic pottery was found, and a little bit of bone.  
A clay surface was found along the western edge and under the olive like roots which we removed. We found ~~one~~ one stove which may be part of B3307 on the west, but nothing further ~~west~~ west of this stone. Clay was found between the 2 stacks.

Bottom Elevations B550w. F

R-13=1122	HI=353.25m
$\Delta 1=2.240$	351.01m
$\Delta 2=2.045$	351.18m
$\Delta 3=3.175$	351.07m
$\Delta 4=2.048$	351.20m
$\Delta 5=1.908$	351.34m

Year 2005 Trench/Locus B3304 Excavator EEG

DESCRIPTION of PROGRESS of EXCAVATION [date each entry and identify associated pottery pail(s)]:

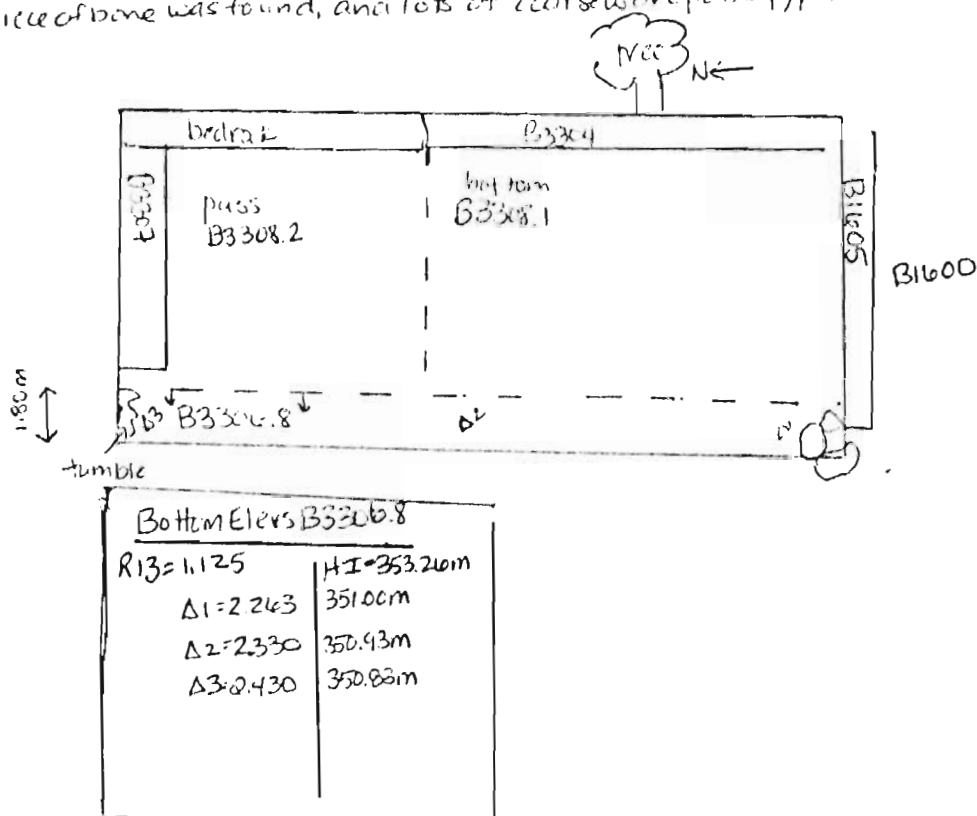
7 July 05

B3306.8

This morning we took one more pass through the ~~the~~ cobble sized tumble in the western area of the trench in hopes of exposing ~~the~~ clay surface underneath + to minimize pottery contamination (this material seems to be later)

The pass began from the southern end of the trench + went north. Because it was tumble, the dirt was not screened.

A clay surface was found along the western boundary, suggesting that we still do not have the west wall of the room. The clay extends the full N-S length of the pass. A piece of bone was found, and lots of coarse ware pottery / pitheas sherds.



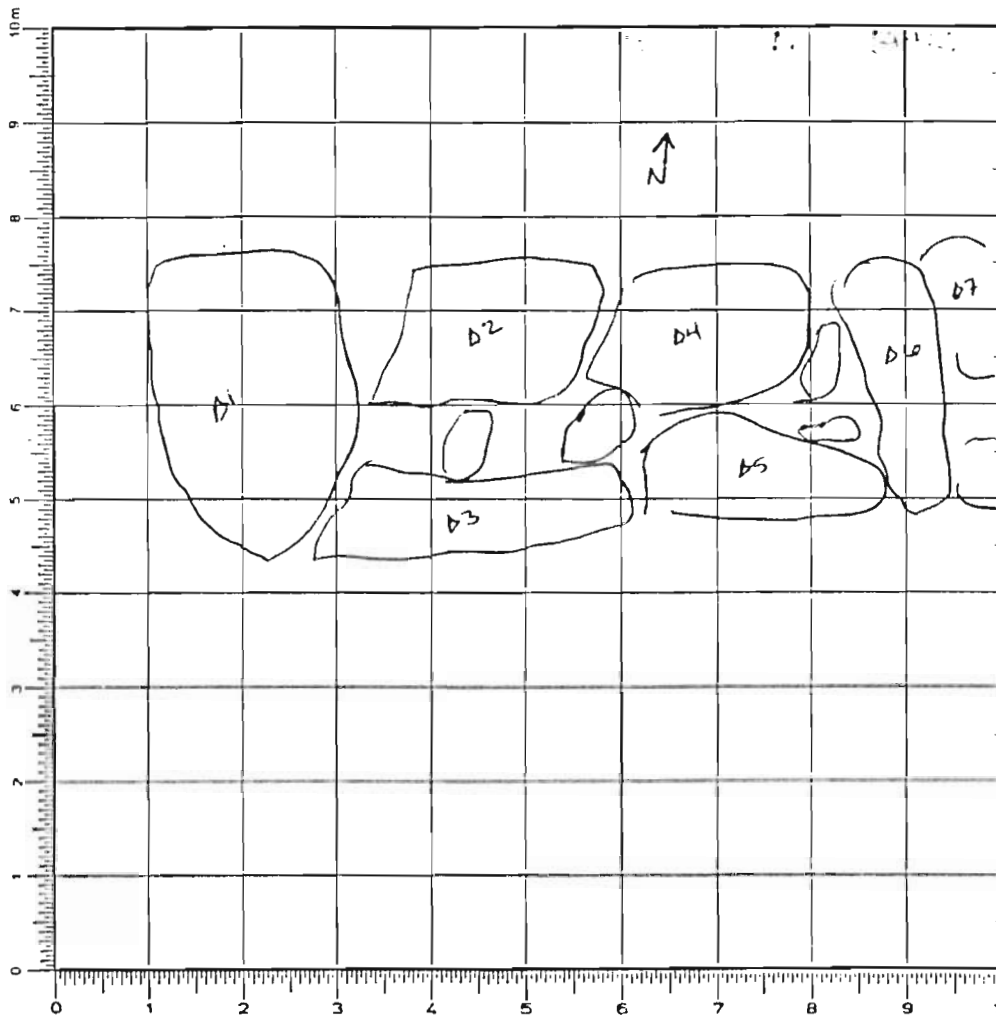
8 July 05

B3306.9

This pail is a small amount of dirt ~~was~~ from cleaning of the ~~the~~ tumble/clay from around the west end of B3304 and a tree root through the middle of the trench. A small amount of pottery was collected, but no bone.

Year 2005 Trench/Locus B3307 Excavator EEGElevations

Benchmark used:  
 Reading on  
 Benchmark:  
 H.I.:



R-13 = 1.201

H.I. = 353.33m

D1 = 1.592 351.74m

D2 = 1.514 351.82m

D3 = 1.505 351.82m

D4 = 1.410 351.92m

D5 = 1.412 351.92m

D6 = 1.174 352.16m

D7 = 1.855 352.47m

SKETCH 1.75-11

DEFINITION/DESCRIPTION of LOCUS (explain why you changed locus numbers):

Today's date:

Locus above: Ø naming the wall.30 June 05

Locus parameters:

Verbal description:

N-S wall in the north of B3300. It is west of B1700 and ~~is~~ southeast of B2507. Appears to adjoin the bedrock in the east of the trench that forms the continuation of B3304, the eastern wall. One stone in the NE corner suggests that the back wall continues to the north.

Locus Interpretative Comments (What do you think this is? DATE your comments, continue on additional pages if necessary):

30 June 05 Archaic wall

p.2

p.2

p.2

p.2

p.2

p.2

# AZORIA Project

p. 1

Year 2005 Trench/Locus B3307 Excavator EEG

DESCRIPTION of PROGRESS of EXCAVATION [date each entry and identify associated pottery pail(s)]:

30 Jun 05

B3307.1

Small wall clearing pass to define the edges of the stones in the eastern part of B3307. Most of the tumbler has already been removed, so we're just picking out the dirt. Because we're trying to define the walls, some dirt may come from just north of the wall.

Pit was screened. ~~some small pottery sherds were collected~~ Some small pottery sherds were collected. There are now 2 visible lines for the north & south faces of the wall, and the individual stones are now more defined. Some bone fragments were found in the screen.

04 July 05

B3307.2

This pail was cleaning around the S face of B3307. A very small amount of dirt.

A little bone & pottery were found. Just needed to be cleaned a little!

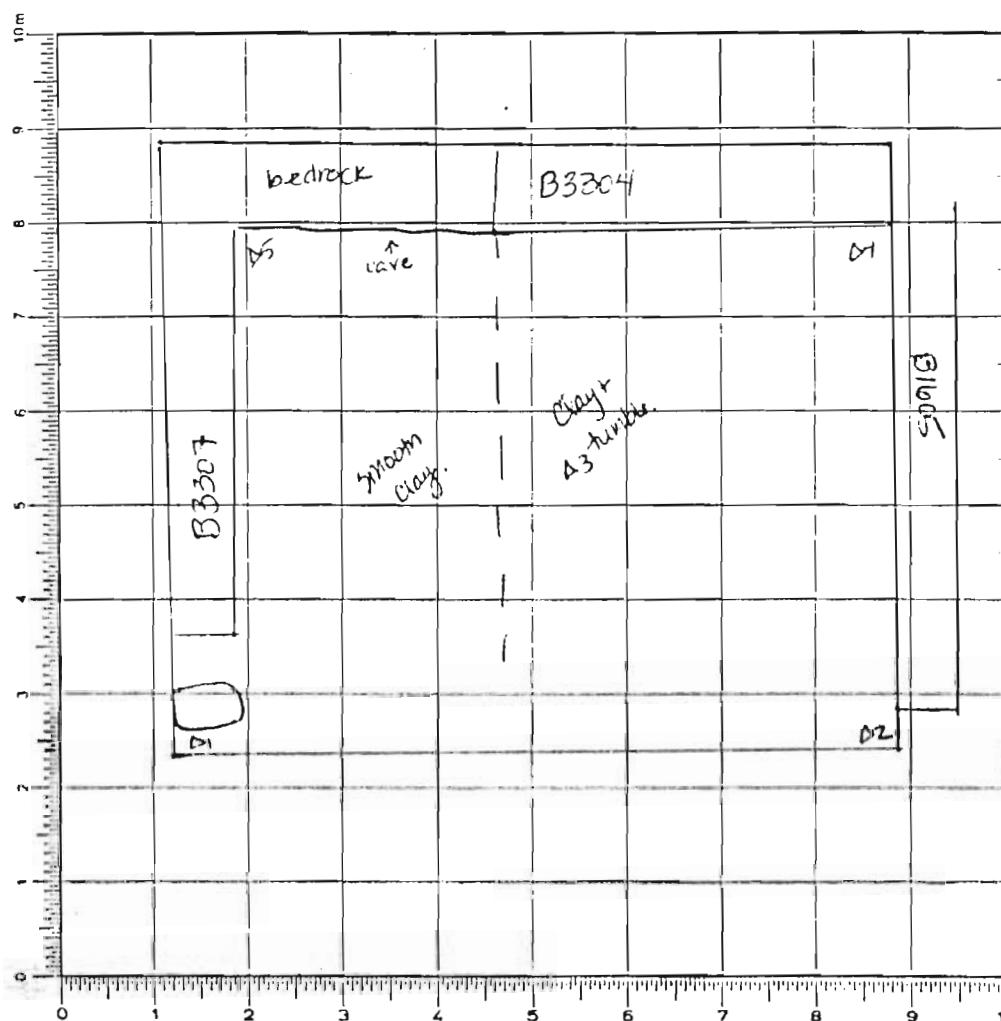
Year 2005 Trench/Locus B3308 Excavator EEGElevations

Benchmark used:

Reading on

Benchmark:

H.I.:

Top Elevs

R-13=

HI=

 $\Delta F=2.240$  $\Delta Z=2.048$  $\Delta 3=1.862$  $\Delta 4=1.530$  $\Delta 5=1.442$ 

DEFINITION/DESCRIPTION of LOCUS (explain why you changed locus numbers):

Today's date:

06 July 2005

Locus parameters:

Locus above: B3306 - changed locus b/c we are now digging through roofing clay

Verbal description:

Trench is ~~5m~~ 3m deep slope from B1700, northeast of B3300, immediately north of B1600 and northwest of B2900.

B3308 includes roofing clay - lots of tumble in southern half along w/ the clay, and smoother clay surface in the northern half. No clear western wall yet.

Locus Interpretative Comments (What do you think this is? DATE your comments, continue on additional pages if necessary):

Year 2005 Trench/Locus B3308 Excavator EEG

[illegible]

## OBJECTS

[illegible]

ADDITIONAL COLLECTED MATERIAL:

[illegible]



Year 2005 Trench/Locus B3303 Excavator EEG

DESCRIPTION of PROGRESS of EXCAVATION [date each entry and identify associated pottery pail(s)]:

B3303.1 06 July 05

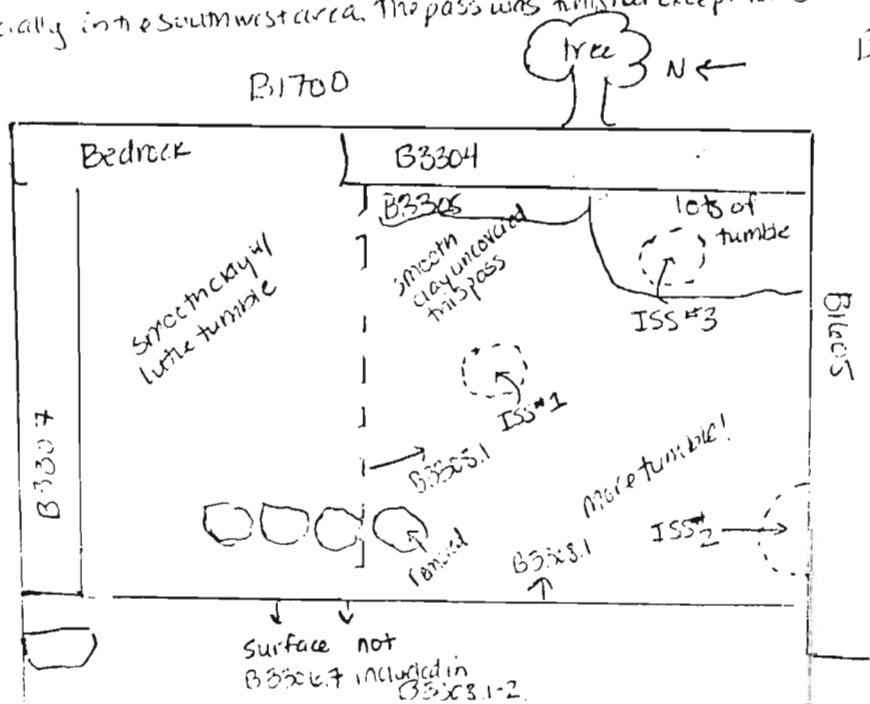
This morning we began our pass through the roofing clay in our trench. First we removed several very large boulders that were tumble, before the bulk around the trench is so deep that it will be difficult to get them out.

We began the pass at the surface of B3304 rather than at the western boundary of the trench b/c this surface was raised & we wanted to lower it to a constant slope. The southern half of the trench still has some large pieces of tumble peeking through the roofing clay, so their removal is the goal of this pass. We began at the western edge of the pass.

We were able to remove a lot of tumble but there is still more underneath. Underneath one rock there appeared to be some burnt clay / carbon material, so intensive soil sample #1 was taken (under tumble). Along the north face of B3303 in the western half of the trench a high concentration of ~~pottery~~ small bone fragments was found - this soil was sent in as ISS #2 ("along N face of B3303"). Several small pieces of pumice were found in the 1/4" screen sent in as pumice.

ISS #3 (soft dirt SE corner of trench) was a patch of soft dirt found in the tumble between the clay. It may be soft b/c of the olive tree roots, but we sent in the sample. We also took a standard soil sample over the pass.

A lot of tumble was removed, but we still have roofing clay underneath, and some more tumble especially in the southwest area. The pass was finished except for some patches along B3304.



Along the continuation of B3305, which continues deeper, we found what may be a plaza.

Year 2005 Trench/Locus B3308 Excavator EEG

DESCRIPTION of PROGRESS of EXCAVATION [date each entry and identify associated pottery pail(s)]:

7 July 05

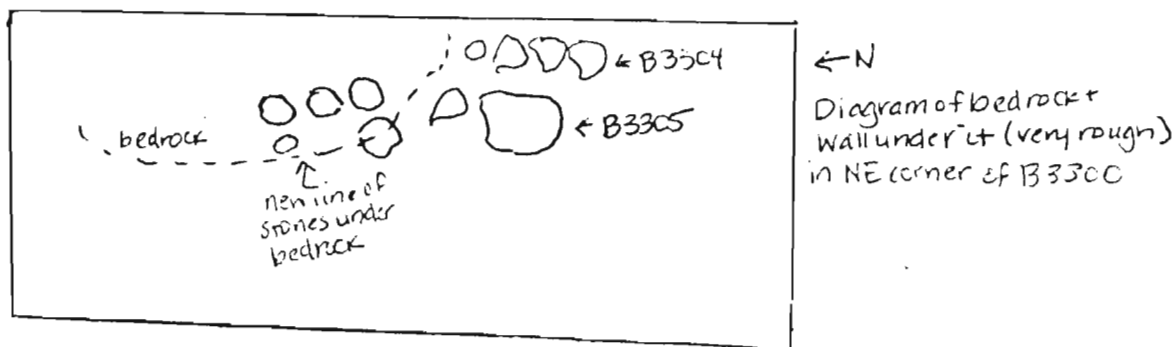
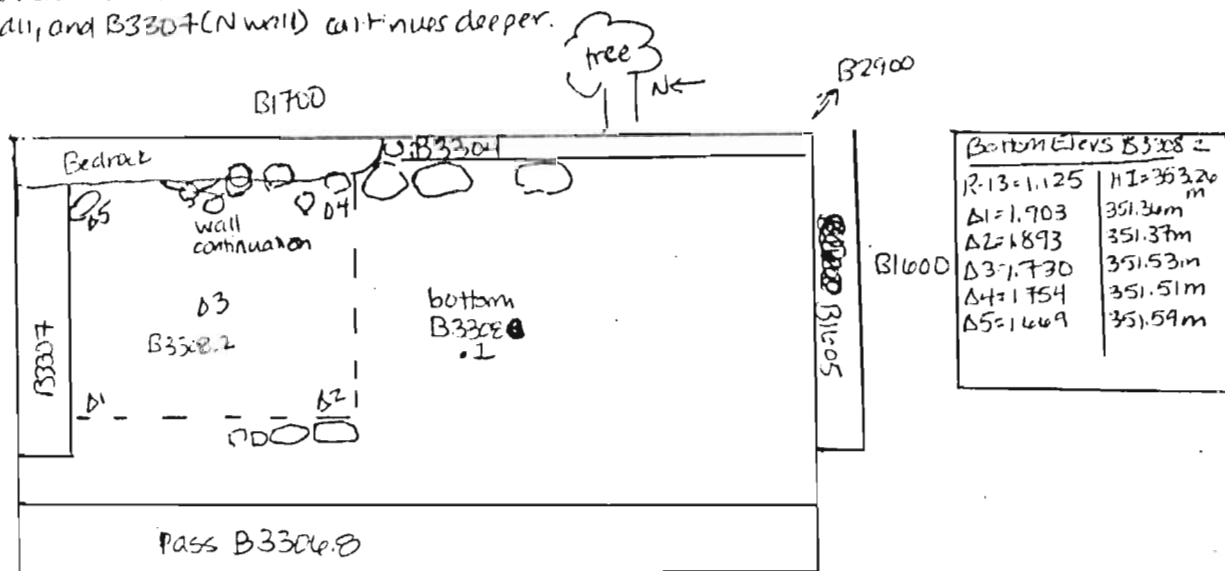
B3308.2

This morning we started a pass into the ~~excavated~~ surface of B3306.3 in order to excavate the roofing clay; make this surface even with B3308.1's surface, which is lower. This area (N part of trench) has less tumble, so we are separating the pails. The pass began at the southern boundary of the pass as indicated on the diagram.

In the eastern edge we immediately found 3 stones that follow the curve of the bedrock, which may be the continuation of the wall of B3304 (B3305). I had previously assumed that they had used the bedrock as part of the wall, even though the face is rough. But since the bedrock seems to be over some sort of cave, the fact that they may be filling in under the wall is good - no more floating walls.

All dirt from the pass was screened. Several small pieces of pumice were found in the screen, and one smallish piece was found in the trench as well. Lots of bone fragments were found in the screen, and several larger fragments in the trench. Mostly coarseware pottery was collected, but less than in previous passes because we are digging through roofing clay.

We have 5 rocks at least under the space in the bedrock which continue the eastern wall, and B3304 (N wall) continues deeper.



Year 2005 Trench/Locus B3308 Excavator EEG

DESCRIPTION of PROGRESS of EXCAVATION [date each entry and identify associated pottery pail(s)]:

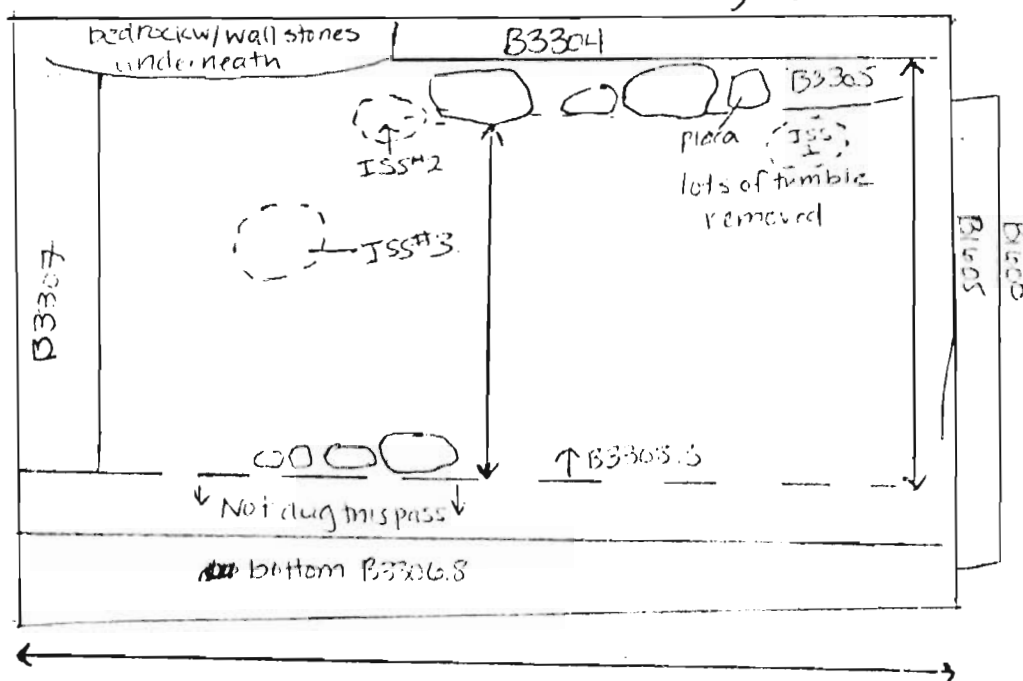
07 July 05

B3308.3

We began another pass through our roofing clay, beginning in the south n half of the trench with the roofing clay and large tumble. We are taking out as much tumble as we can, starting from the southwest + moving east.

All dirt is being sifted. A piece of shell and bone were found in the trench and sent in w/ the bone bag. The dirt is relatively poor in material, however.

N ← tree



Bottom Elev B3308.3  
 X - see bottom  
 Elev  
 B3308.4  
 next page

The dirt between the tumbled rocks is softer (as in B3308.1 yesterday), bit of water, perhaps, and tree roots. We took an Intensive soil sample (#1 - soft dirt from SE corner).

It also became clear that the remains of wall B3305 extend deeper - possibly it is a large bedrock chunk. We have finally found a corner.

In the SE corner of the trench - with the lower course of B3305 and B3305. It's still unclear whether B3307 extends deeper or not.

Other finds include a sea pebble. Because they are finding olive in our soil samples, we took an I.S.S. (olive) near B3305 (ISS#2 - W of B3305) & ISS#3 came from the NE corner close to the bedrock, and seems to contain burnt clay (ISS#3 - NE Quadrant).

Year 2005 Trench/Locus B3308 Excavator EEG

DESCRIPTION of PROGRESS of EXCAVATION [date each entry and identify associated pottery pail(s)]:

7 July 05B3308.3 Continued~~ADDITIONAL~~

The pass was finished though not all the dirt was screened (this will be finished in a new pail tomorrow)

Because the surface in the southern half of the trench is very smooth, it may be a floor. The tumble has been completely removed from this half so it was resting on the surface. The wall still continues further down. The only reason that I don't think this is a floor is that there seems to be some sort of built feature/wall in the middle of this pass. We will sweep it off very carefully tomorrow, maybe dig a little deeper, and see what happens.

Year 2005 Trench/Locus B3308 Excavator EEG

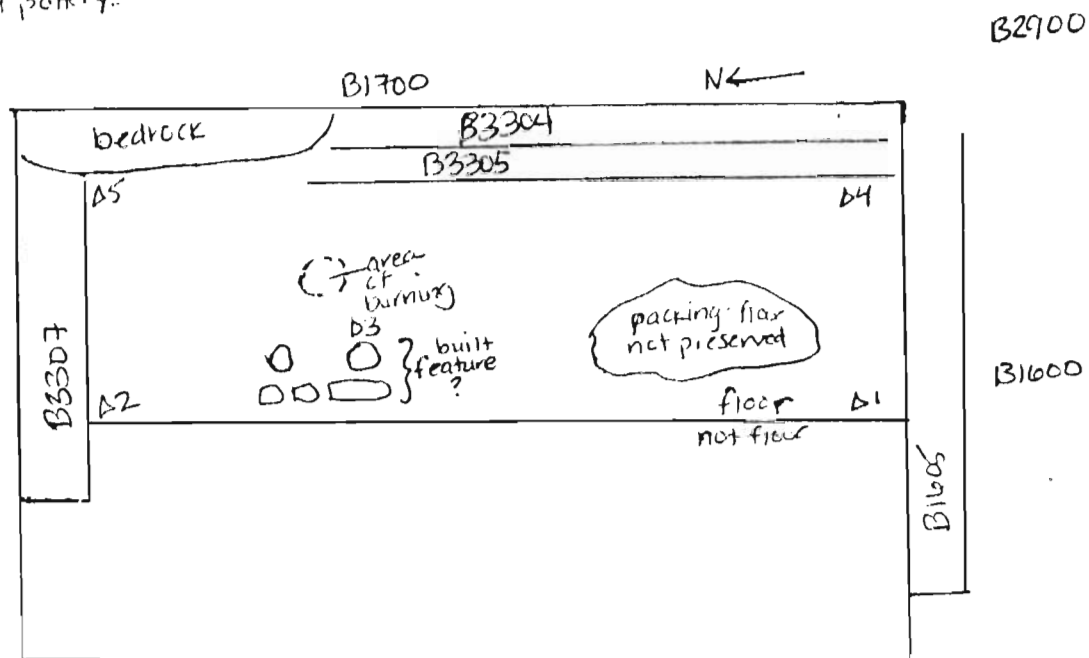
DESCRIPTION of PROGRESS of EXCAVATION [date each entry and identify associated pottery pail(s)]:

8 July 05

B3308.4 This is the screening of the remaining zembulia from yesterday's pass, B3308.3. Pottery and bone fragments were collected.

B3308.9 This was clearing of some remaining cobble sized tumble and sweeping after B3308.3-4. Pottery was collected, but no bone.

It seems we have reached the bottom of B3307, so we are at the Archaic surface. The floor is not very well preserved in one area of the southern half and we seem to have reached the packing below it. There is a strange feature in the northeast 1/2 of the floor - its function is ~~unknown~~ unknown, but it will be drawn - it consists of about 5 rocks, 3 of which are linear. There is a burned patch nearby in the northeast, of which a sample was taken yesterday. The floor is not very well preserved overall because of the tree roots, and there is a large tree root running directly through this feature. The overall function of the room is unknown - there were no objects coming down to floor level, but a lot of pottery.



### Bottom Elevations

B3307.4

R-13=1.115	H I=353.25m
A1=1.900	351.35m
A2=1.901	351.35m
A3=1.880	351.37m
A4=1.860	351.40m
A5=1.730	351.52m

Year 2005 Trench/Locus B3308 Excavator EEG

DESCRIPTION of PROGRESS of EXCAVATION [date each entry and identify associated pottery pair(s)]:

10 July 05  
B3308.4

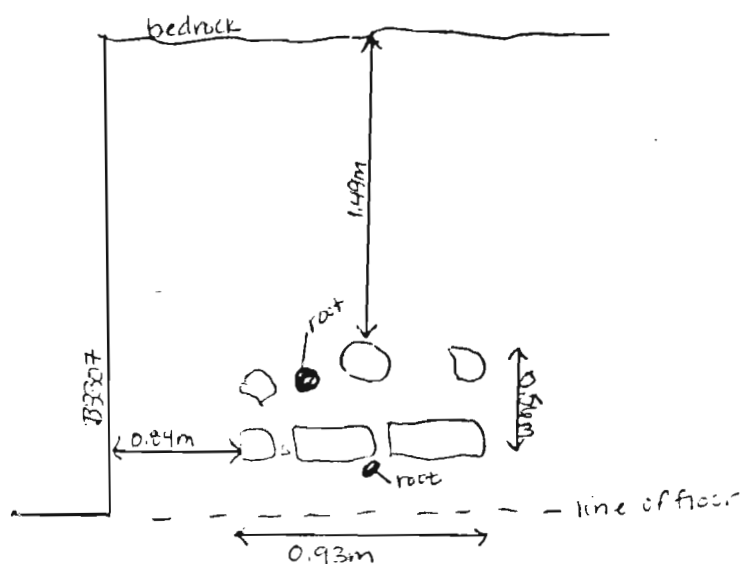
I've been thinking about the 'built feature' some more - it is possible that it was meant to be a hearth. We have 3 ~~small~~ cubic stones in a row and a circular, flat stone just to the east - maybe these are respectively one side of the hearth and a warming stone? The root that goes through this feature (twice!) might have disturbed the western side of the hearth & we might have removed these stones as a tumble if they were uprooted off the floor. In any case, we do not have the ~~entire~~ floor preserved much to the west beyond this feature, so we may only be looking at half of it.

11 July 05

B3308.5

A stone loomweight was found during wall cleaning after trench was closed, so I gave it its own pair ~~from~~ from the last locus.

The "built feature"

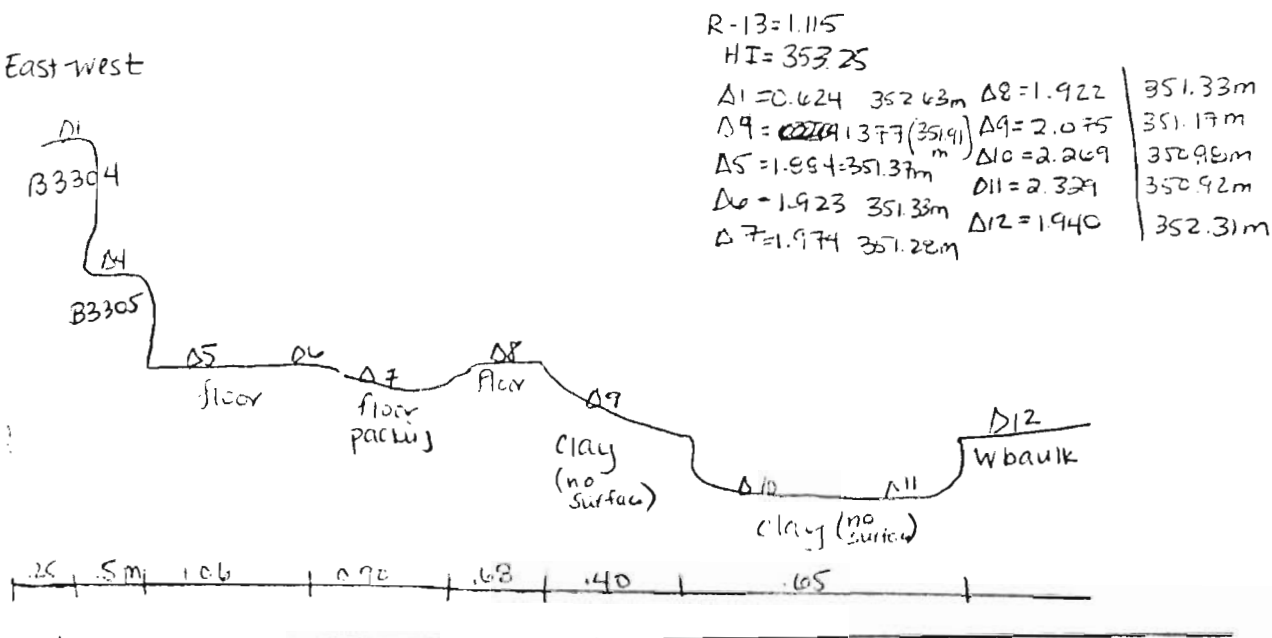


Year 2005 Trench/Locus B3308 Excavator EEG

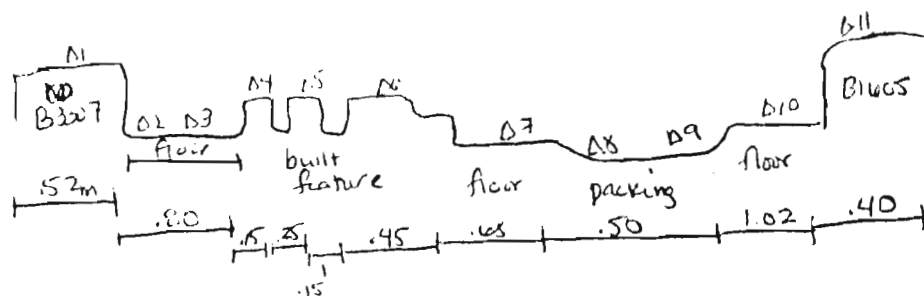
DESCRIPTION of PROGRESS of EXCAVATION [date each entry and identify associated pottery pail(s)]:

Final Elevs. for Cross-sections

① East-west



② North-South

R-13=~~1.125~~ 1.125  
HI=~~353.25~~ 353.26m

$\Delta 1 = 1.503$	351.76	$\Delta 7 = 1.892$	351.37
$\Delta 2 = 1.970$	351.39	$\Delta 8 = 1.980$	351.28
$\Delta 3 = 1.867$	351.31	$\Delta 9 = 1.925$	351.27
$\Delta 4 = 1.700$	351.50	$\Delta 10 = 1.905$	351.35
$\Delta 5 = 1.722$	351.54	$\Delta 11 = 1.280$	351.98
$\Delta 6 = 1.675$	351.58		

For more elevations  
on bottom B3308.4;  
see prev. pages.