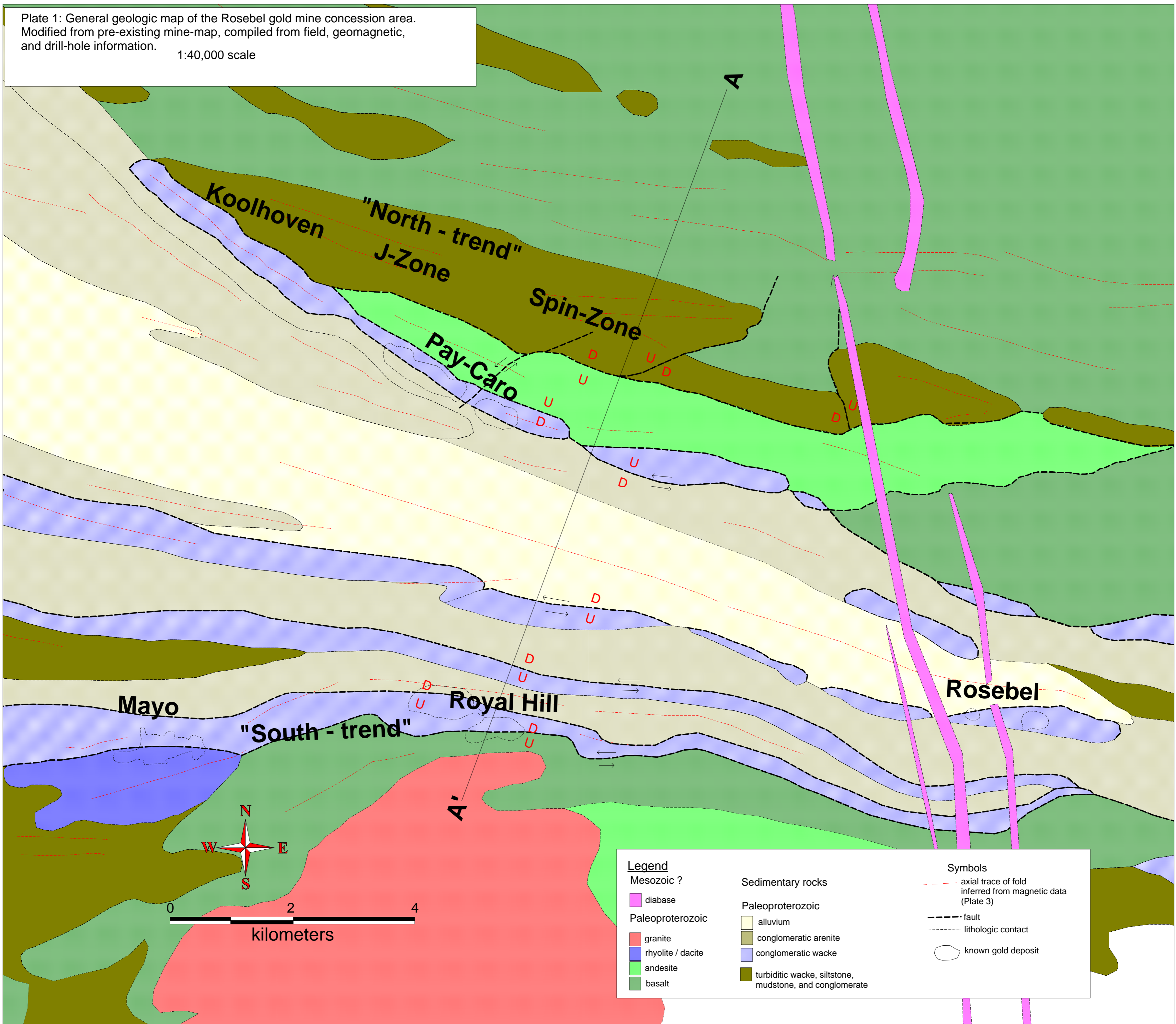


Plate 1: General geologic map of the Rosebel gold mine concession area.  
Modified from pre-existing mine-map, compiled from field, geomagnetic,  
and drill-hole information. 1:40,000 scale



**Legend**

Mesozoic ?

- diabase

Paleoproterozoic

- granite
- rhyolite / dacite
- andesite
- basalt

**Sedimentary rocks**

Paleoproterozoic

- alluvium
- conglomeratic arenite
- conglomeratic wacke
- turbiditic wacke, siltstone, mudstone, and conglomerate

**Symbols**

- axial trace of fold inferred from magnetic data (Plate 3)
- fault
- lithologic contact
- known gold deposit