

Azoria 2004

Trench Report for A600

PL

09 July, 2004

#### Introduction:

In 2004, an extension was added to the trench A600. The workmen for this extension were Manolis Dantes and Athanasios Syritoudes. The trench assistants were Sarah Falb, Elizabeth McKinley-Ward, Charles Newsome and Lisa Niro. The trench supervisor was Paul Lesperance. This continuation of A600 was dug between the 4<sup>th</sup> and the 7<sup>th</sup> of June, 2004. The benchmark used was R3 (364.24m).

The extension of A600 was a rough rectangle measuring 3.39m on the west, 2.02m on the north, 3.60m on the east and 1.57m on the south. It bordered two previously excavated kitchens. It was bounded in the east by the wall A609, on the south partially by the wall A604, and in the north by trench A1600. The purpose of continuing the trench A600 was to try and clarify the relationship and means of communications between the two kitchens to the east and south and the other rooms further north.

#### Stratigraphic Report:

The trench was dug as three loci. First, the modern topsoil was removed in one shallow pass as A650 (pail 1). Below this locus, the soil was fairly similar but was hopefully less disturbed by modern processes and showed more signs of wall tumble, so it was given its own locus as A651 (pails 1-3). Pail A651.3, which was the lowest, showed signs of hitting the hard packed gravelly packing layer for a floor without any indication of a floor above. A651.3 also surrounded an area of increased tumble, which was given its own locus (A652) and cleaned as A652.1, up against wall A609. After cleaning, A652 revealed an area of paving.

Pottery of the Archaic Period was present in each pail removed from the trench. However, it was usually mixed up with that of other periods, including Late Minoan IIIC and Hellenistic. No objects of note were recovered.

#### Interpretation:

For the most part, it would seem that the extension of A600 was heavily damaged by erosion and tumble from further upslope to the point that most of its ancient floor has been washed away. It is unclear what function the pavers served, since the paved patch is not in line with either of the doors into the area from the kitchen. It may be that either the paved area once extended to a greater extent, perhaps fronting the doors as part of a street or path, or that the doors (especially that through the wall A609) have been misidentified. Another possibility is that the paved area served as some sort of area for a specific activity related to the kitchens but needing to be off to one side of the means of access.

Year 2004 Trench/Locus A650 Excavator PL

## DESCRIPTION of PROGRESS of EXCAVATION [date each entry and identify associated pottery pile(s)]:

04 June 2004

We have moved south to the area bounded on the east by wall 4609, on the south by the line of wall A604, on the north by the edge of locus A1603, and on the west by the continuation of the western edge of trench A1600. We have designated the locus, part of trench A600, as A650. This locus is at the present surface level and will, therefore, not be screened.

We cleaned the immediate surface area and then proceeded to make a shallow pass across the width of the locus, heading south. We did not screen, but we took a standard soil sample. The matrix is a light brown clayish soil with a good mix of gravel included. With near half of the locus dug, not very much pottery, and no bone has been recovered.

Large rocks seem largely absent save perhaps by the wall. Rocks of any size are very scarce along the western side. Upon uncovering the central and southern ends of the eastern half of the locus, several larger stones, including a long flat one near the door to the kitchen, were recovered. Along with it were some fragments of pottery including some pithos fragments.

We finished the pass, having found some ceramics and bones. We closed the pile (A650.1) and the locus. Next we started the next locus (A651) and pile (A651.1). This locus shows the same matrix characteristics as A650 but is further down and so is hopefully less disturbed. Its starting elevations were 364.32 m in the north and 364.71 m in the south.

Workers commented that soil in north western portion of trench is harder than that along western wall. This may be an indication of different depositional processes.

The long flat stone may be a displaced door post washed out of the wall.

Manolis is of the opinion that the harder soil, just below the locus surface towards the east along the wall, may be an ancient use surface. The day ended before we could finish the pass. We cleaned up and swept. We recovered some ceramics and a little bit of bone which was all bagged and tagged.

Year 2004 Trench/Locus A651 Excavator PL

## DESCRIPTION of PROGRESS of EXCAVATION [date each entry and identify associated pottery pair(s)]:

07 June 2004

We are continuing our unfinished pass in locus A651. As it is a new day, we have started a new pail (A651.2). The north east area of the locus against wall A609 is very hard with a good deal of pebbles. It appears to be the bedding for the wall. The area further south has larger rocks (0.30m+ long) which are probably wall tumble. One particularly well squared rock lies with its longest axis running East-west. It may have been part of the door (doorpost) to the northern kitchen as the door is located closely. A standard soil sample was taken from this pail. We removed some of the large rocks from the area of tumble along A609, but many remain unbroken. Upon cleaning the 'doorpost' in the wrong size and orientation for be part of the door. (Odd as it is ~~not~~ tumble.)

Some ceramics and bone were recovered, neither very much, bagged and tagged.

We completed the pass and have started another one which avoids the area of rock tumble in the south eastern area. Instead, we are digging in the softer dirt (with fewer rocks) in the west and the putative bedding layer to the ~~the~~ north east. This pass shall be pail A651.3. The soil is a light brown with some small stones, but it is fairly soft.

We started from the south and worked our way north, skirting the area of wall tumble. We are removing some bone and ceramics, but not much on the whole. Amongst the bone was a tooth and a sea shell. The ceramic sherds were more plentiful in the bedding area in the north east where a pithos sherd was found.

We finished the pass and started on the area of tumbled rock, calling it locus A652.

A sea pebble was recovered in pail A651.2 and put in the pail's bone bag. It was not given an object number. A ~~small~~ pierced brown shell was also unnumbered in pail A651.3. It was unclear whether the piercing was naturally or artificially created, so it was kept with the remaining bones until the state of the hole can be determined. Should it turn out to be artificial, we will give it an object number.

Year 2004 Trench/Locus A652Excavator PL

DESCRIPTION of PROGRESS of EXCAVATION [date each entry and identify associated pottery pail(s)]:

07 June 2004:

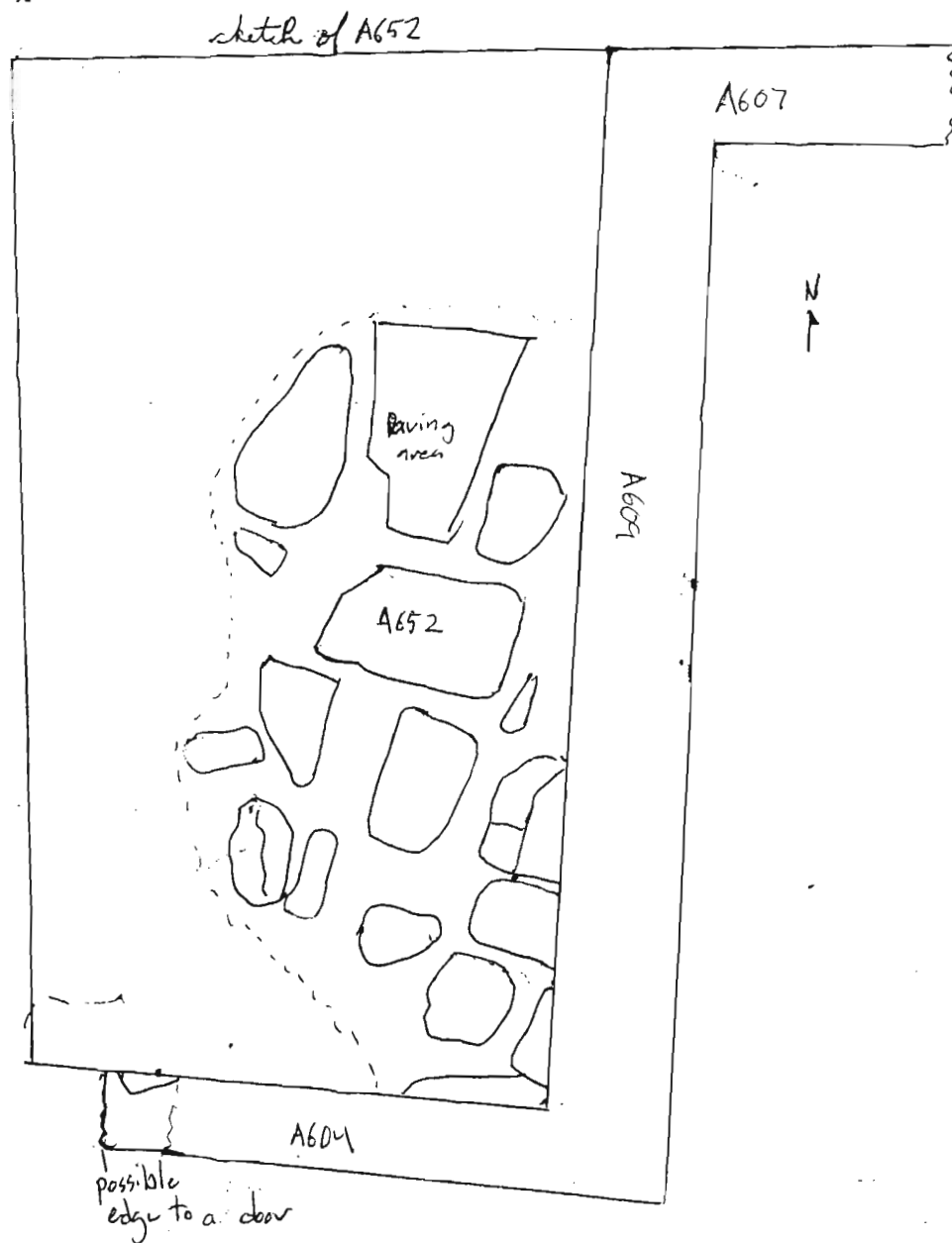
We started digging the area of rocks which may either be wall tumble and/or a patch of paving and which we have labelled locus A652. We are removing the dirt between the stones as well as the smaller stones and those which are obviously tumbled from the wall. A standard soil sample was taken, and two record photos were also taken from the east and south-east. The dirt between the stones continues to be light brown and soft as in A651. Some ceramics and bone are being recovered, but not very much (especially of bone). The ceramics at least include 1 large fragment of a pithos (about the size of a hand).

Upon further discussion with the higher-ups, it was decided that the flat stones were in fact the remnants of an area of paving, perhaps adjacent to some street. And so we cleaned it up and removed extraneous rocks. We also cleared off some of the debris (or wash) from the nearby area of the excavated locus to the south. This exposed the end of the wall (and the edge of a possible door which continues into the western bulk) and swept the entirety of the area and closed it down. A second set of photographs (??) was taken of the paving.

The paving is most well defined in roughly the central-eastern area of the current excavation area, where five large and flat rocks lie in situ. The paving extends southwards up to wall A604. The south central portion of the excavated area was generally free of large flat stones. What stones were there seem to have been tumbled from either A609 or (more likely) A604, because of their eccentric orientations and their placement up against A604. These central stones were removed with the rest of the tumble.

Year 2004 Trench/Locus A652 Excavator PL

DESCRIPTION of PROGRESS of EXCAVATION [date each entry and identify associated pottery pail(s)]:

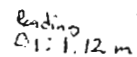


## Elevations

## Reading on

Benchmark: 1.26m

H.I.: 365.50

 $\Delta_2: 1.11 \text{ m}$  $\Delta 3 = 1.60 \text{ m}$  $\Delta y = 0.79 \text{ m}$ 

45:1.09m

Fl. 4. 1. 1964

Elevations:  
 $\Delta_1 = 364.78$

$$\Delta_2 = 344.37$$
$$\Delta 3: 364.50 \mu$$
$$\Delta_{11} = 364.51 \dots$$

CS: 364 ylm

Final:

1:20

SKETCH 1: ~~75~~ N

1

Today's date: 04 June 2004

Locus above:

Locus parameters: ~~west~~ <sup>west</sup> boundary (3.39m), north boundary (2.02m), east boundary (3.60m), south boundary (1.57m)

Verbal description: This ~~band~~ <sup>inverted</sup> lens lies to the south of lens A603 and its western boundary is a continuation of the boundary of that lens. It is bordered on the east and south by walls A609 and A604 respectively. This lens is the current surface of the area and a single shallow pass along it. The matrix is a light brown clayish soil with some gravel included.

Locus Interpretative Comments (What do you think this is? DATE your comments, continue on additional pages if necessary):

04 June 04: It is hoped that we will encounter an ancient surface beneath the loam, partially protected by wall A600 from erosion. However, this loam itself, being the top soil is likely highly disturbed.  
We are hoping to uncover some evidence for the communication between the ditch and trench A1600.

Year 2004

Trench/Locus

A650

Excavator PL

[illegible]

## OBJECTS

[illegible]

ADDITONAL COLLECTED MATERIAL

[illegible]

Year 2004 Trench/Locus A651 Excavator PL

### Elevations

Benchmark used: R2 (364.24)

Reading on

Benchmark: 3.44s

H.l.: 367.68

Readings:

$$\Delta_1 = 3.36 \text{ m}$$
$$J_{2:3.27m}$$

Elevations:

$\Delta_1 = 364.32 \text{ m}$

$$\Delta_2 = 364.91 \text{ m}$$

Final

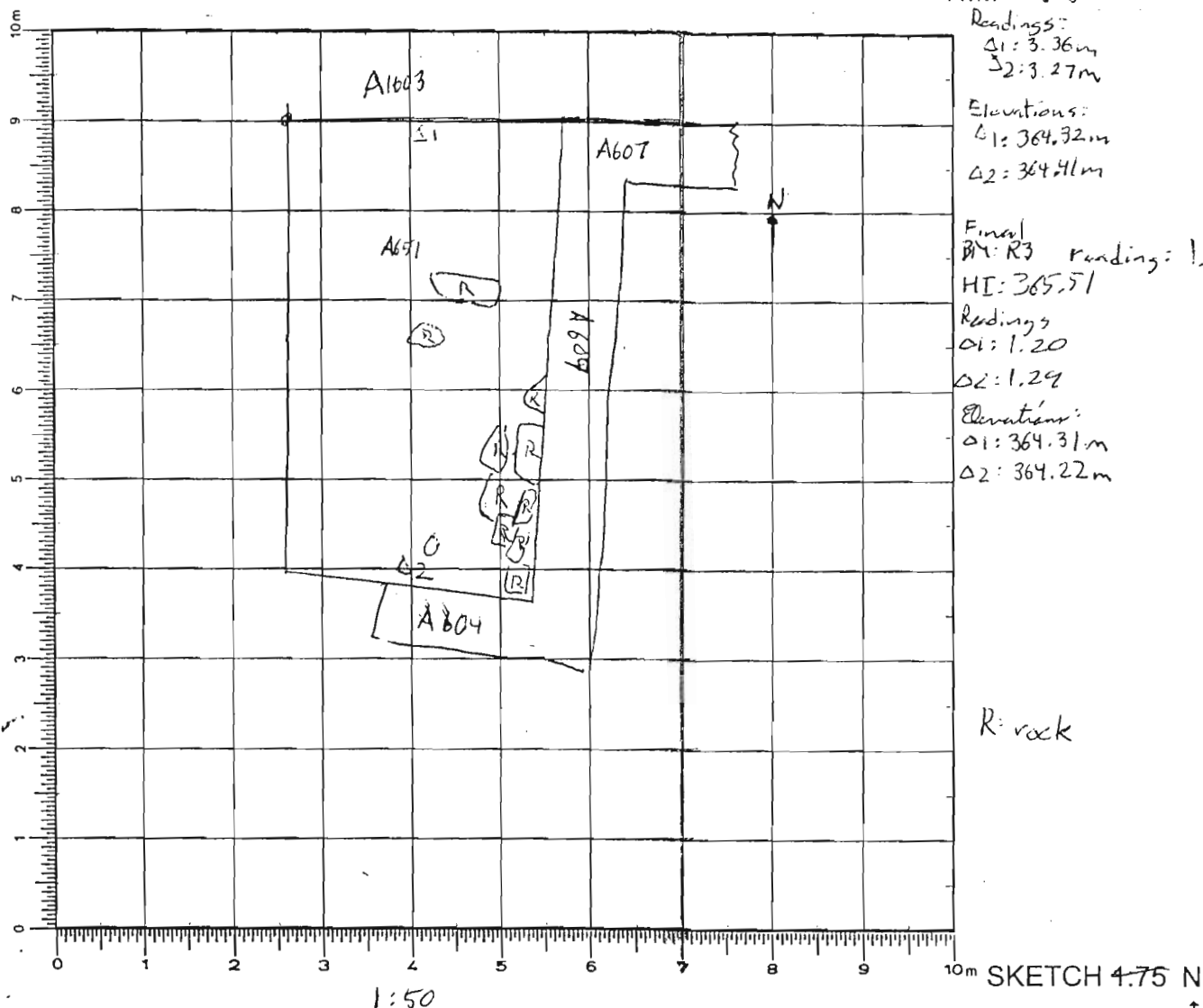
BM: R3 reading: 1.27m

HI: 365.51

Reading

 $\alpha_i: 1.20$  $\Delta C: 1.29$ 

Observations:

 $\Delta_1: 364.31 \text{ m}$ 
$$\Delta_2: 364.22 \text{ m}$$


DEFINITION/DESCRIPTION of LOCUS (explain **why** you changed locus numbers):

Today's date: 04 June 2004      Locus above: A650

Locus parameters: West boundary (3.39m), North boundary (2.02m), East boundary (3.60m) & West boundary (1.57m)

Verbal description: Having removed the modern surface with a shallow pass, we are continuing downwards with another pass, naming the new locus A651. It too is bounded by A1603, A609, and A604. The soil is light brown and varies in consistency between rocky and soft and loose. The rocks seem to be concentrated in the south eastern area. After the first pass (A651.1 & A651.2) an area of rocks appeared in the south east corner. The next pass (A651.3) shifted the area, which will be taken down as a separate locus, and lay to the looser soil area to the west and north.

Locus Interpretative Comments (What do you think this is? DATE your comments, continue on additional pages if necessary):

04 Jan 2004. This lane is hopefully less disturbed than A650. We hope to find a floor (perhaps close to the east wall) at least partially preserved at the bottom.





Year 2004 Trench/Locus A652 Excavator PL**Elevations**Benchmark used: R3 (364.24)

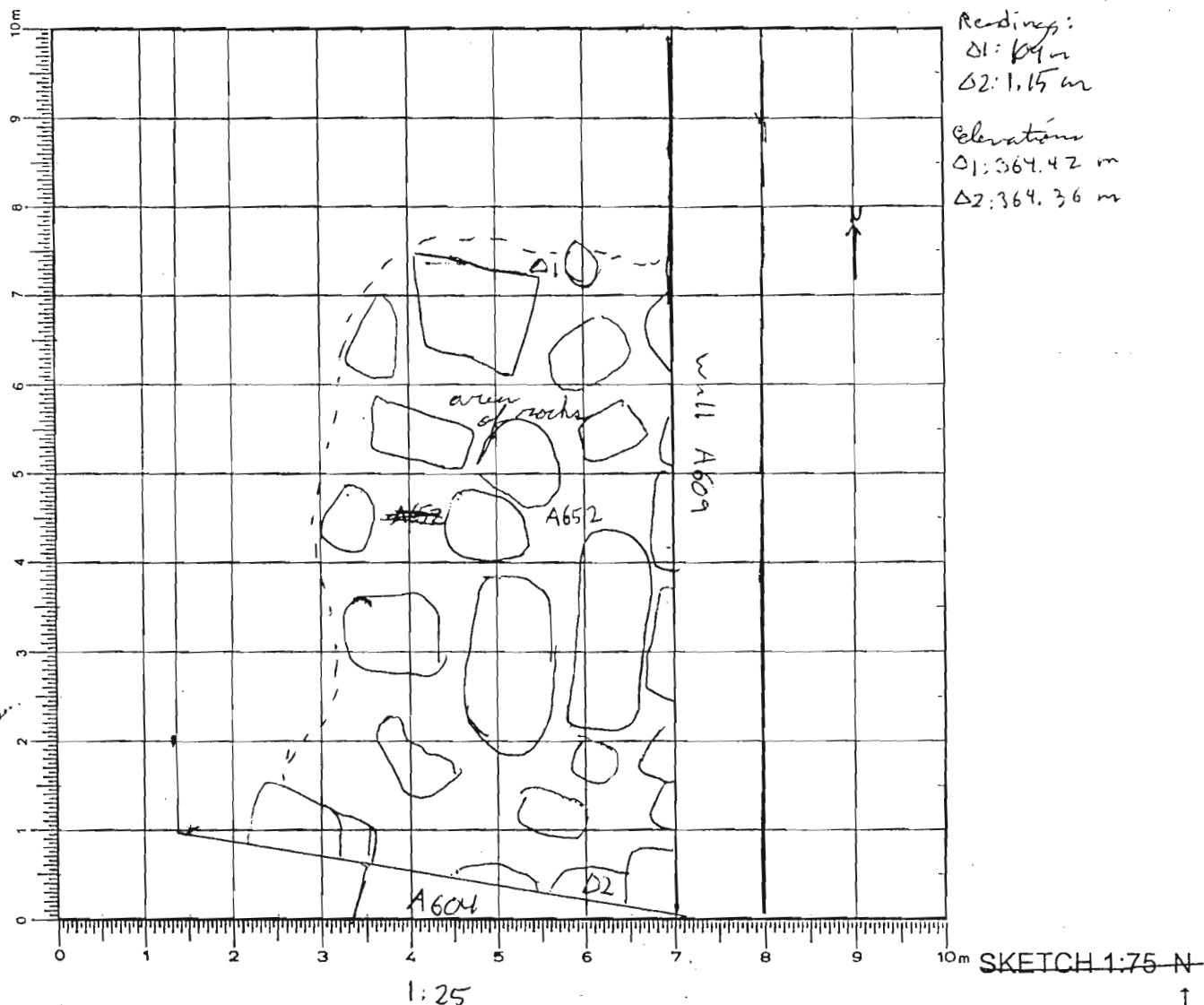
Reading on

Benchmark: 1.27H.I.: 365.51m

Reading:

 $\Delta 1$ : 0.64m $\Delta 2$ : 1.15m

Elevations

 $\Delta 1$ : 364.42 m $\Delta 2$ : 364.36 m

DEFINITION/DESCRIPTION of LOCUS (explain why you changed locus numbers):

Today's date: 07 June 2004 Locus above: A651 (and to side)Locus parameters: irregular patch (north-south: 2.10m) (east-west: 0.96m) at greatest

Verbal description: This is the area of wall tumbles along the base of wall A609. It is characterized by multiple large flat rocks, possibly fallen from A609. It lies against the east wall (A609) and against A604 to the south. Record photos taken from south east and east. The shape is irregular, following the lines of the pile of rocks.

Locus Interpretative Comments (What do you think this is? DATE your comments, continue on additional pages if necessary):

It is hoped that intact use surface will be found beneath this area. Another possibility is that it is a portion of paving, since there are a lot of flat stones, especially in the northern section.

Year 2004

Trench/Locus A652

Excavator PL

✓

5

[illegible]